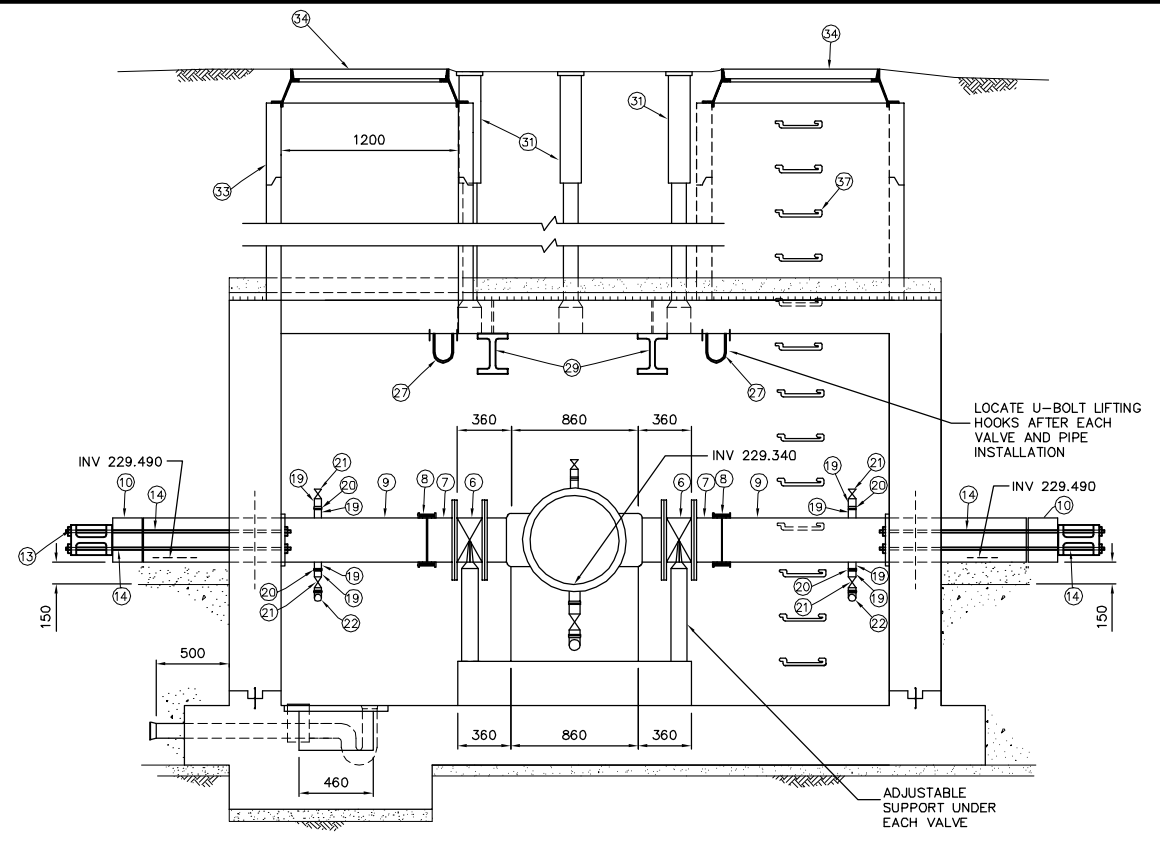
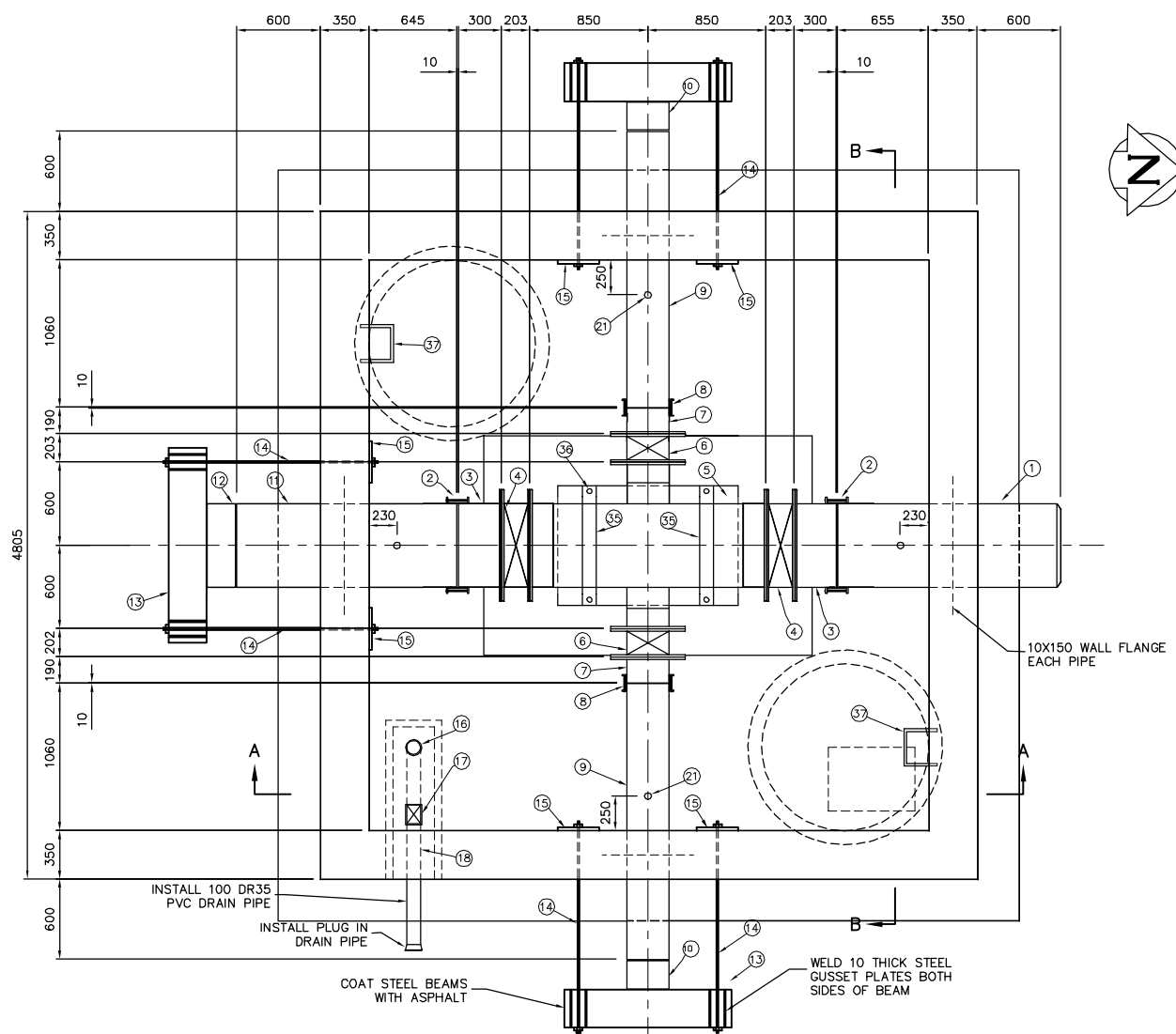


SECTION A-A
1:25



SECTION B-B
1:25



PLAN VIEW - ELEV. 230.500
1:25



ITEM	DESCRIPTION	LENGTH	QUANTITY
1	600# AWWA PIPE WALL PIECE (SPIGOT X PLAIN END)	1305	1
2	600# AWWA C219 STEEL SLEEVE COUPLING	-	2
3	600# PIPE (FLANGE X PLAIN END) (TO BE SUPPLIED BY OTHERS)	300	2
4	600# MULLER SHORT BODY BUTTERFLY VALVE (AWWA C504)	-	2
5	600 X 600 X 300 X 300 PIPE CROSS (FLANGE X FLANGE X FLANGE X FLANGE)	-	1
6	300# AWWA C509 GATE VALVE	-	2
7	300# AWWA PIPE (FLANGE X PLAIN END)	190	2
8	300# AWWA C219 STEEL SLEEVE COUPLING	-	2
9	300# PIPE WALL PIECE (PLAIN END X PLAIN END)	2010	2
10	300# CAP	-	2
11	600# PIPE WALL PIECE (BELL X FLANG END)	1295	1
12	600# PLUG	-	1
13	W200 X 36 STEEL BEAM (C 40.21-44*)	1200	3
14	32mm# PIPE 316 STAINLESS STEEL THREADED ROD C/W NUTS & WASHERS	AS REQUIRED	12
15	STEEL BEARING PLATE 350 X 300 X 25	-	6
16	100mm# PVC (SDR35) "P" TRAP & DRAIN C/W SCREEN ON GRATED COVER	AS REQUIRED	1
17	100mm# BACKWATER VALVE	-	1
18	100mm# PVC (SDR35) DRAIN PIPE (SPIGOT X BELL)	-	1
19	50mm# BRASS OR BRONZE NIPPLE (THREADED)	125	12
20	50mm# BRASS OR BRONZE FLANGE (THREADED)	-	12
21	50mm# BRONZE GATE VALVE (THREADED) (CRANE FIG. NO. 428)	-	6
22	50mm# BRASS 90° STREET ELBOW (THREADED)	-	2
23	75mm# BRASS OR BRONZE NIPPLE (THREADED)	125	6
24	75mm# BRASS OR BRONZE FLANGE (THREADED)	-	6
25	75mm# BRONZE GATE VALVE (THREADED) (CRANE FIG. NO. 428)	-	2
26	75mm# BRASS 90° STREET ELBOW (THREADED)	-	2
27	U-BOLT LIFTING HOOK	-	4
28	REMOVABLE SLAB LIFTING LUG	-	12
29	W310 X 45 HOT DIP GALVANIZED ROOF BEAM	4470	2
30	STEEL BEARING PLATE 225 X 150 X 16	-	4
31	STANDARD CITY OF WINNIPEG HINGED COVER VALVE 800 C/W VALVE STEM EXTENSION WITH AWWA NUT	-	4
32	MANHOLE STEPS Ø 300 D/C	-	28
33	1200mm # ASTM C-76, CLASS II PRECAST CONCRETE MANHOLE RISER SECTIONS	1.85	-
34	TITAN TF-114 MANHOLE FRAME AND SOLID COVER TITAN	-	2
35	19 X 100 GALVANIZED METAL STRAPPING	AS REQUIRED	2
36	25mm# PIPE 316 STAINLESS STEEL BOLTS C/W TYPE 316 STAINLESS STEEL NUTS AND WASHERS	400	4

WARNING
IF POWER EQUIPMENT OR EXPLOSIVES ARE TO BE USED FOR EXCAVATION ON THIS PROJECT THE CONTRACTOR
1) NOTIFY THE GAS COMPANY OF THE PROPOSED LOCATION OF EXCAVATION.
2) TAKE PRECAUTION TO AVOID DAMAGE TO GAS COMPANY INSTALLATIONS.
SEE PROVINCIAL REGULATION 210/72 FOR DETAILS

NOTE:
ALL EXPOSED STEEL INCLUDING PIPE COUPLING TO BE COATED AS PER AWWA C210.
CHAMBER FITTINGS TO BE AWWA C110 DI OR STEEL.
CHAMBER PIPING TO BE AWWA C200 STEEL OR AWWA C151 CLASS 54 DUCTILE IRON.
SEE DRAWING NO. D-BB35, D-BB36 AND D-8837 FOR CONCRETE AND REINFORCING DETAILS.

METRIC
WHOLE NUMBERS INDICATE MILLIMETRES
DECIMALIZED NUMBERS INDICATE METRES

B.M. ELEV.	FIELD BOOK #	CITY OF WINNIPEG WATER AND WASTE ENGINEERING DIVISION		ENGINEER'S SEAL	THE CITY OF WINNIPEG WATER AND WASTE DEPARTMENT
POSTED TO LBS		DESIGNED BY TW/SC	CHECKED BY TW	ORIGINAL SIGNED BY K.R. ZUREK 05/08/12	
		DRAWN BY CJH	APPROVED BY KZ		LAGIMODIERE BOULEVARD FEEDERMAIN EXTENSION OFFTAKE VALVE CHAMBER PIPE AND FITTING DETAILS
		HOR. SCALE VERTICAL SHOWN	RELEASED FOR CONSTRUCTION		SHEET 7 OF 11 CITY DRAWING NUMBER D-8827
NO. REVISIONS	DATE BY	DATE 2005.08.08	DATE	BID OPPORTUNITY: 354-2005 FILENAME: lagimodiere.dwg PLOT DATE: 2005 08 12	