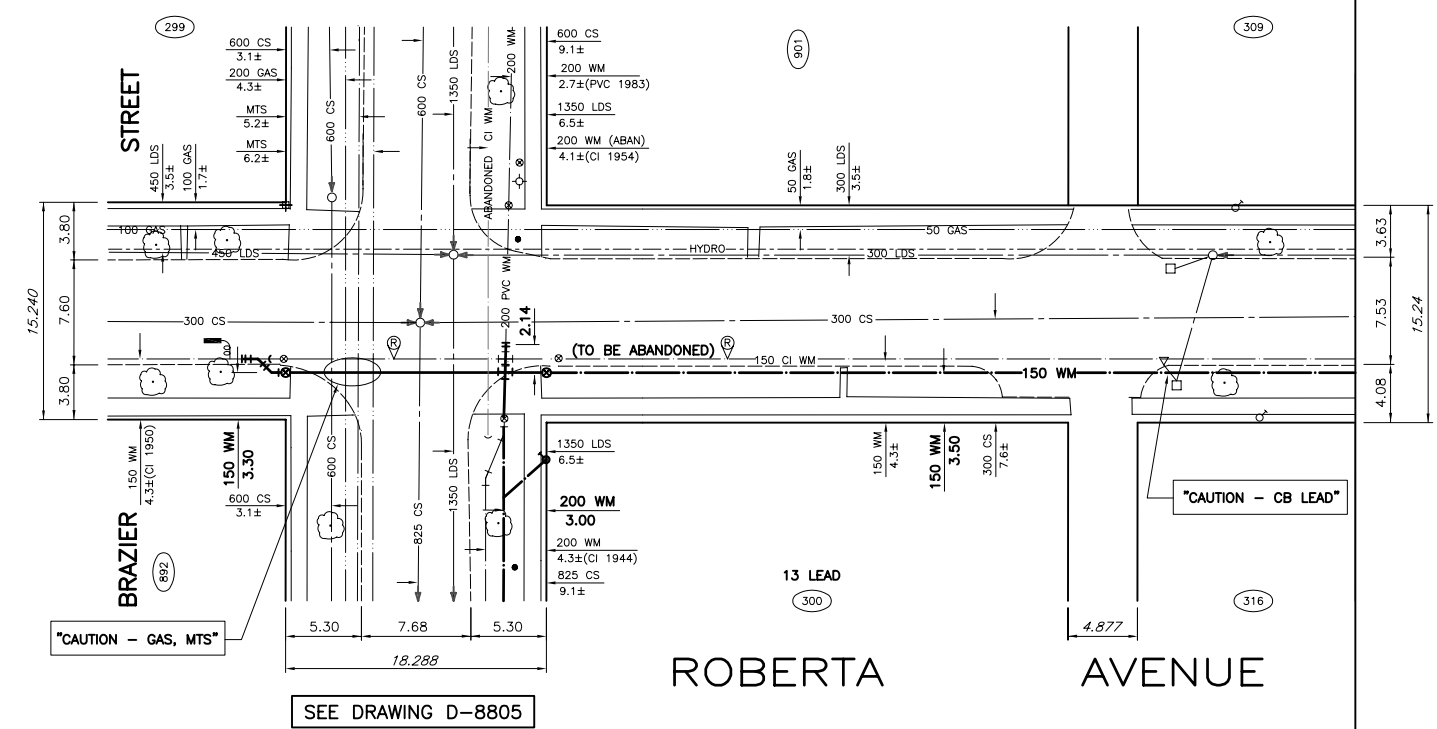


HOUSE No.	SIZE & TYPE	DISTANCE TO TOP	STOP COCK LOCATION		CORPORATION COCK LOC.	COMMENTS
			SIDE	LONG		
892 BRAZIER	20 COP	0.3	3.0 N OF SH.	UNKNOWN	9.9 S OF HYD	SERVICED OFF BRAZIER
901 BRAZIER	20 COP	UNK	3.0 N OF SH.	UNKNOWN	5.0 N OF HYD	SERVICED OFF BRAZIER
299	13 COP	UNK	1.8 N EHL	UNKNOWN	4.6 N OF VALVE	SERVICED OFF BRAZIER
300	13 LEAD	UNK	0.9 S NIL	UNKNOWN	5.6 S OF VALVE	SERVICED OFF BRAZIER
309	20 COP	0.3	4.6 E OF W CORNISE	UNKNOWN	45.1 W OF HYD	MOVED STOP 0.3 N
316	20 COP	0.3	0.3 E OF 1111	4.9 OUT FROM USE	44.0 W HYD	

\* SERVICE TO BE RENEWED. ALL OTHERS TO BE RECONNECTED.



SEE DRAWING D-8793

- GENERAL NOTES:**
- CHAINAGE IS ALONG SOUTH PROPERTY LINE OF ROBERTA AVENUE.
- CONSTRUCTION NOTES:**
- EXPOSE EXISTING WATERMAIN AT TIE-IN LOCATIONS AND CONFIRM INVERT PRIOR TO CONSTRUCTION.
  - INSTALL WATERMAIN BY TRENCHLESS METHODS.
  - ALL MATERIALS SHALL CONFORM TO THE CITY OF WINNIPEG STANDARD CONSTRUCTION SPECIFICATIONS.
  - MINIMUM COVER TO TOP OF WATERMAIN SHALL BE 2.4m.
  - NOTIFY ALL AFFECTED RESIDENTS AND BUSINESSES 24 HOURS IN ADVANCE OF ANY WATER SHUTDOWNS OR DISRUPTION OF SERVICE.



EXISTING	LEGEND-PLAN	PROPOSED	EXISTING	LEGEND-PLAN	PROPOSED	EXISTING	LEGEND-PLAN	PROPOSED
150 WM	WATERMAIN	150 WM	ANCHOR	ANCHOR	ANCHOR	150 WM	WATERMAIN	150 WM
400 FM	FEEDERMAIN	400 FM	TREE	TREE	TREE	200 WM	WATERMAIN	200 WM
300 LDS	LAND DRAINAGE SEWER	300 LDS	BEND	BEND	BEND	300 CS	COMBINED SEWER	300 CS
250 WWS	WASTEWATER SEWER	250 WWS	TEE	TEE	TEE	200 FCM	FORCEMAIN	200 FCM
300 CS	COMBINED SEWER	300 CS	CURB STOP	CURB STOP	CURB STOP	JUNCTIONS	JUNCTIONS	JUNCTIONS
200 FCM	FORCEMAIN	200 FCM	PLUG	PLUG	PLUG	HYDRANT	HYDRANT	HYDRANT
			MANHOLE	MANHOLE	MANHOLE	VALVE	VALVE	VALVE
			CATCHBASIN	CATCHBASIN	CATCHBASIN	REDUCER	REDUCER	REDUCER
			CURB INLET	CURB INLET	CURB INLET			
			ADDRESS	ADDRESS	ADDRESS			
			HYDRO POLE	HYDRO POLE	HYDRO POLE			
			LIGHT STANDARD	LIGHT STANDARD	LIGHT STANDARD			

LOCATION APPROVED UNDERGROUND STRUCTURES	B.M. CITY OF WINNIPEG 12-064	F.B.#2091
SUPV. U/G STRUCTURES COMMITTEE	ELEV. 230.413m	
DATE		
NOTE: LOCATION OF UNDERGROUND STRUCTURES AS SHOWN ARE BASED ON THE BEST INFORMATION AVAILABLE. BUT NO GUARANTEE IS GIVEN THAT ALL EXISTING UTILITIES ARE SHOWN OR THAT THE GIVEN LOCATIONS ARE EXACT. CONFIRMATION OF EXISTENCE AND EXACT LOCATION OF ALL SERVICES MUST BE OBTAINED FROM THE INDIVIDUAL UTILITIES BEFORE PROCEEDING WITH CONSTRUCTION.		
ISSUED FOR TENDER	05.07.04	HAK
ISSUED FOR APPROVAL	05.06.29	HAK
NO. REVISIONS	DATE	BY

WARDROP Engineering Inc.		ORIGINAL DRAWING REVISION * - SEALED BY H.A.K. KATZ 05.06.30	
DESIGNED BY	GWC	CHECKED BY	
DRAWN BY	NL	APPROVED BY	
HOR. SCALE:	1 : 250	RELEASED FOR CONSTRUCTION	
VERTICAL:	1 : 50	DATE	05.05.20
CONSULTANT DRAWING NO.	0500120400-DWG-C4001		

**THE CITY OF WINNIPEG**  
WATER AND WASTE DEPARTMENT

2005 WATERMAIN RENEWALS  
CONTRACT No. 9

ROBERTA AVENUE  
BRAZIER STREET TO  
57m EAST OF BRAZIER STREET

CITY DRAWING NUMBER  
**D-8792**

SHEET **1** OF **14**

**C4001**