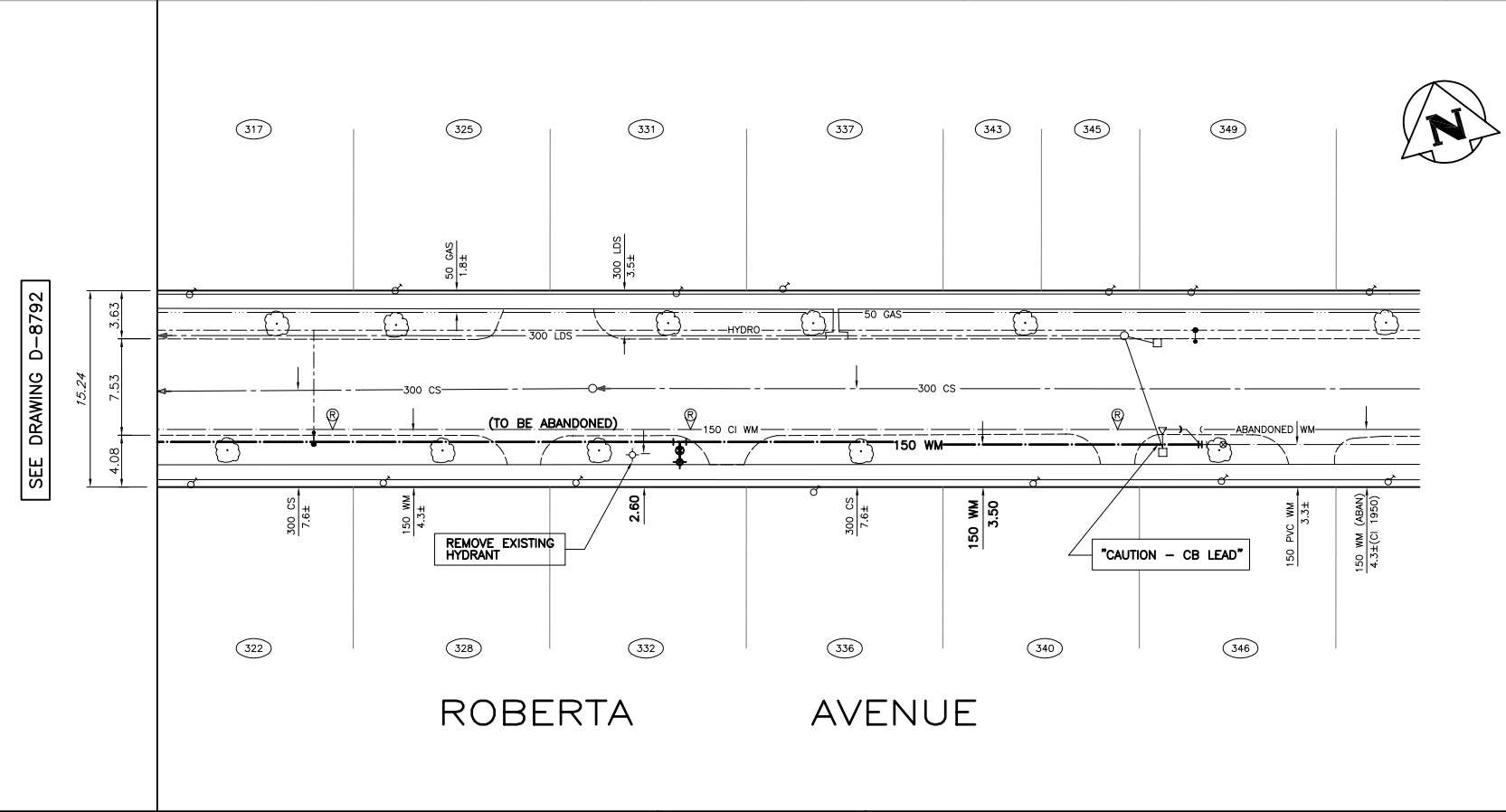
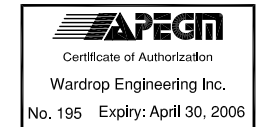


HOUSE No.	SIZE & TYPE	DISTANCE TO PL.	STOP COCK LOCATION		CORPORATION COCK LOC.	COMMENTS
			SHORT	LONG		
317	20 COP	0.3	ON WHL	UNKNOW	35.4 W OF HYD	
322	20 COP	UNK	0.6 W OF WHL	UNKNOW	33.8 W OF HYD	
325	20 COP	0.3	2.1 E OF W COR OF HSE	UNKNOW	18.4 W OF HYD	
328	20 COP	UNK	1.2 E OF WHL	UNKNOW	1.5 E OF WHL	
331	20 COP	UNK	3.4 W OF EHL	UNKNOW	4.0 E OF HYD	
332	20 COP	0.3	1.0 E OF W COR OF HSE	UNKNOW	4.6 W OF HYD	
336	20 COP	0.3	4.3 E OF W COR OF HSE	UNKNOW	14.1 E OF HYD	
337	20 COP	0.3	0.9 E OF WHL	UNKNOW	11.3 E OF HYD	
340	20 COP	UNK	3.4 W OF EHL	UNKNOW	32.6 E OF HYD	
343	25 COP	0.3	11.0 E OF W COR OF HSE	UNKNOW	34.1 E OF HYD	DBLE SERV WITH 343
345	25 COP	0.3	11.0 E OF W COR OF HSE	UNKNOW	34.1 E OF HYD	DBLE SERV WITH 343
346	20 COP	UNK	4.6 W OF EHL	43.0 W OF HYD	0.9 E OF 1ST VALVE W OF ROACH	
349	20 COP	UNK		UNKNOW	42.4 E OF HYD	



- GENERAL NOTES:**
- CHAINAGE IS ALONG SOUTH PROPERTY LINE OF ROBERTA AVENUE.
- CONSTRUCTION NOTES:**
- EXPOSE EXISTING WATERMAIN AT TIE-IN LOCATIONS AND CONFIRM INVERT PRIOR TO CONSTRUCTION.
 - INSTALL WATERMAIN BY TRENCHLESS METHODS.
 - ALL MATERIALS SHALL CONFORM TO THE CITY OF WINNIPEG STANDARD CONSTRUCTION SPECIFICATIONS.
 - MINIMUM COVER TO TOP OF WATERMAIN SHALL BE 2.4m.
 - NOTIFY ALL AFFECTED RESIDENTS AND BUSINESSES 24 HOURS IN ADVANCE OF ANY WATER SHUTDOWNS OR DISRUPTION OF SERVICE.



EXISTING	LEGEND-PLAN	PROPOSED	EXISTING	LEGEND-PLAN	PROPOSED	EXISTING	LEGEND-PLAN	PROPOSED
150 WM	WATERMAIN	150 WM	BEND			ANCHOR		
400 FM	FEEDERMAIN	400 FM	TEE			TREE		
300 LDS	LAND DRAINAGE SEWER	300 LDS	CURB STOP			LEGAL DIMENSION		
250 WWS	WASTEWATER SEWER	250 WWS	PLUG			SURVEY BAR		
300 CS	COMBINED SEWER	300 CS	MANHOLE			WATERMAIN REPAIR		
200 FCM	FORCEMAIN	200 FCM	CATCHBASIN			GAS		
	JUNCTIONS		CURB INLET			HYDRO		
	HYDRANT		ADDRESS			MTS		
	VALVE		HYDRO POLE			SIDEWALK		
	REDUCER		LIGHT STANDARD			CURB		

LOCATION APPROVED UNDERGROUND STRUCTURES		B.M. CITY OF WINNIPEG 12-064		F.B. #2091	
SUPV. U/G STRUCTURES	DATE	ELEV. 230.413m			
COMMITTEE					
NOTE: LOCATION OF UNDERGROUND STRUCTURES AS SHOWN ARE BASED ON THE BEST INFORMATION AVAILABLE. BUT NO GUARANTEE IS GIVEN THAT ALL EXISTING UTILITIES ARE SHOWN OR THAT THE GIVEN LOCATIONS ARE EXACT. CONFIRMATION OF EXISTENCE AND EXACT LOCATION OF ALL SERVICES MUST BE OBTAINED FROM THE INDIVIDUAL UTILITIES BEFORE PROCEEDING WITH CONSTRUCTION.					

WARDROP Engineering Inc.		ORIGINAL DRAWING	
DESIGNED BY: GWC	CHECKED BY:	REVISION	"_" SEALED BY
DRAWN BY: NL	APPROVED BY:	H.A.K. KATZ	05.06.30
HOR. SCALE: 1 : 250	RELEASED FOR CONSTRUCTION	CONSULTANT DRAWING NO. 0500120400-DWG-C4002	
VERTICAL: 1 : 50	DATE	05.05.20	

THE CITY OF WINNIPEG
WATER AND WASTE DEPARTMENT

2005 WATERMAIN RENEWALS
CONTRACT No. 9

ROBERTA AVENUE
57m EAST OF BRAZIER STREET TO
140m E OF BRAZIER STREET

CITY DRAWING NUMBER
D-8793

SHEET **2** OF **14**

C4002