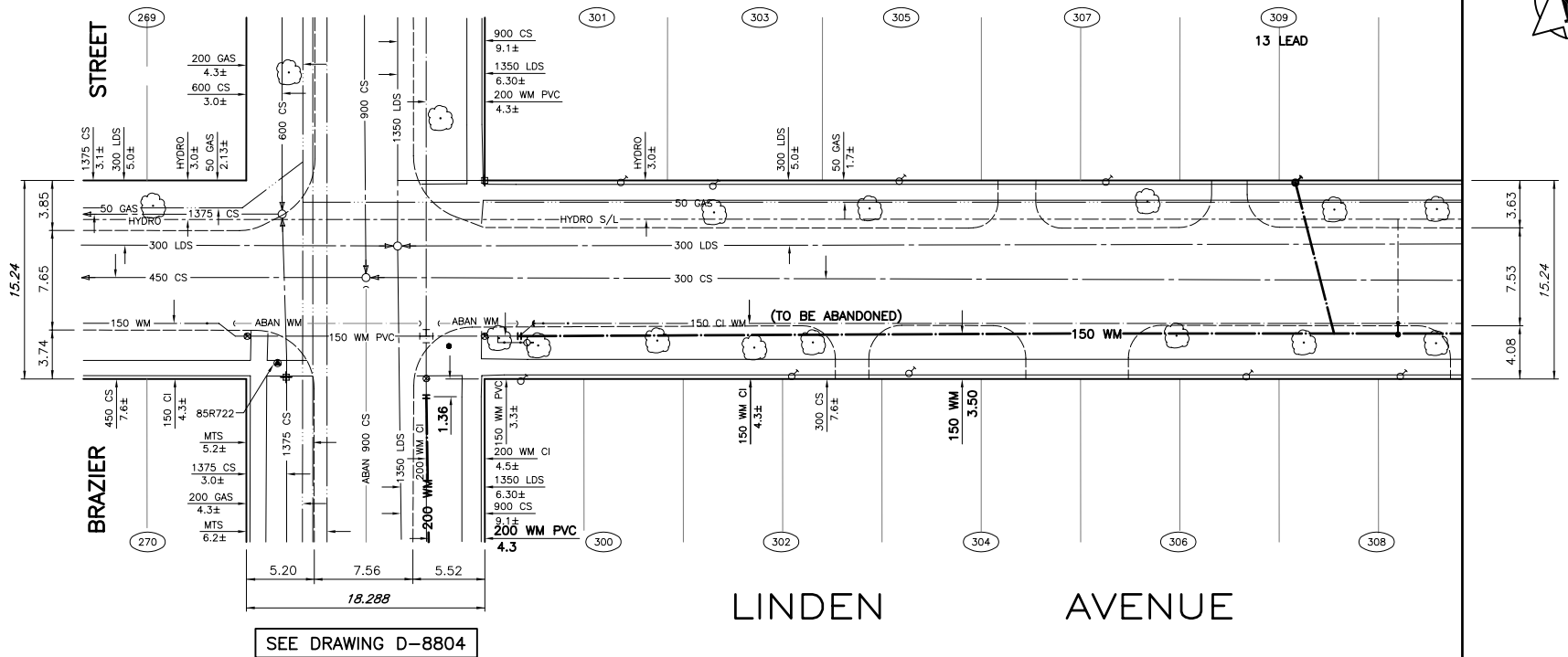


DISE. No.	SIZE & TYPE	DISTANCE TO TOP	STOPCOCK LOCATION		CORPORATION COCK LOC.	COMMENTS
			SHORT	LONG		
269	13 COP	UNK	1.8 E OF NUL	UNKNOWN	300 N OF HYD	
270	13 COP	UNK	0.3 E OF NUL	UNKNOWN	296 N OF HYD	
300	20 COP	UNK	1.6 W OF W SIDE HSE	UNKNOWN	1.2 VALVE ON E/L BRAZIER	
301	20 COP	0.3	2.4 W OF E COR HSE	UNKNOWN	10.9 E OF HYD	
302	20 COP	0.3	7.4 E OF W COR HSE	UNKNOWN	22.9 E OF HYD	
303	13 COP	UNK	1.2 E OF WHL	UNKNOWN	17.4 E OF HYD	
304	20 COP	UNK	1.5 E OF WHL	UNKNOWN	33.2 E OF HYD	
305	20 COP	0.3	4.3 E OF W COR HSE	UNKNOWN	31.9 E OF HYD	
306	13 COP	UNK	1.8 W OF EHL	UNKNOWN	58.5 E OF HYD	
307	20 COP	UNK	4.3 E OF WHL	UNKNOWN	44.8 E OF HYD	
308	20 COP	UNK	3.7 W OF EHL	UNKNOWN	70.0 E OF HYD	
309	20 LEAD	UNK	3.0 W OF EHL	UNKNOWN	61.7 E OF HYD	

*SERVICE TO BE RENEWED. ALL OTHERS TO BE RECONNECTED.



SEE DRAWING D-8798

- GENERAL NOTES:**
- CHAINAGE IS ALONG SOUTH PROPERTY LINE OF LINDEN AVENUE.
- CONSTRUCTION NOTES:**
- EXPOSE EXISTING WATERMAIN AT TIE-IN LOCATIONS AND CONFIRM INVERT PRIOR TO CONSTRUCTION.
 - INSTALL WATERMAIN BY TRENCHLESS METHODS.
 - ALL MATERIALS SHALL CONFORM TO THE CITY OF WINNIPEG STANDARD CONSTRUCTION SPECIFICATIONS.
 - MINIMUM COVER TO TOP OF WATERMAIN SHALL BE 2.4m.
 - NOTIFY ALL AFFECTED RESIDENTS AND BUSINESSES 24 HOURS IN ADVANCE OF ANY WATER SHUTDOWNS OR DISRUPTION OF SERVICE.



EXISTING	LEGEND-PLAN	PROPOSED	EXISTING	LEGEND-PLAN	PROPOSED	EXISTING	LEGEND-PLAN	PROPOSED
150 WM	WATERMAIN	150 WM	150 WM	BEND	150 WM	ANCHOR TREE		
400 FM	FEEDERMAIN	400 FM	400 FM	TEE	400 FM	LEGAL DIMENSION		
300 LDS	LAND DRAINAGE SEWER	300 LDS	300 LDS	CURB STOP	300 LDS	SURVEY BAR		
250 WWS	WASTEWATER SEWER	250 WWS	250 WWS	PLUG	250 WWS	TRAFFIC SIGNAL		
300 CS	COMBINED SEWER	300 CS	300 CS	MANHOLE	300 CS	GAS		
200 FCM	FORCEMAIN	200 FCM	200 FCM	CATCHBASIN	200 FCM	HYDRO		
150 WM	JUNCTIONS	150 WM	150 WM	CURB INLET	150 WM	MTS		
150 WM	HYDRANT	150 WM	150 WM	ADDRESS	150 WM	SIDEWALK		
150 WM	VALVE	150 WM	150 WM	HYDRO POLE	150 WM	CURB		
150 WM	REDUCER	150 WM	150 WM	LIGHT STANDARD	150 WM			

LOCATION APPROVED UNDERGROUND STRUCTURES		B.M. CITY OF WINNIPEG 12-064	
SUPV. U/G STRUCTURES	DATE	ELEV. 230.413m	F.B. 2091
COMMITTEE			
NOTE: LOCATION OF UNDERGROUND STRUCTURES AS SHOWN ARE BASED ON THE BEST INFORMATION AVAILABLE. BUT NO GUARANTEE IS GIVEN THAT ALL EXISTING UTILITIES ARE SHOWN OR THAT THE GIVEN LOCATIONS ARE EXACT. CONFIRMATION OF EXISTENCE AND EXACT LOCATION OF ALL SERVICES MUST BE OBTAINED FROM THE INDIVIDUAL UTILITIES BEFORE PROCEEDING WITH CONSTRUCTION.			

WARDROP Engineering Inc.	
DESIGNED BY: GWC	CHECKED BY:
DRAWN BY: NL	APPROVED BY:
HOR. SCALE: 1 : 250	RELEASED FOR CONSTRUCTION:
VERTICAL: 1 : 50	DATE: 05.05.20

ORIGINAL DRAWING REVISION * - SEaled BY H.A.K. KATZ 05.06.30
CONSULTANT DRAWING NO. 0500120400-DWG-C4006

THE CITY OF WINNIPEG
WATER AND WASTE DEPARTMENT

2005 WATERMAIN RENEWALS
CONTRACT No. 9

LINDEN AVENUE
BRAZIER STREET TO
75m EAST OF BRAZIER STREET

CITY DRAWING NUMBER
D-8797

SHEET **6** OF **14**

C4006