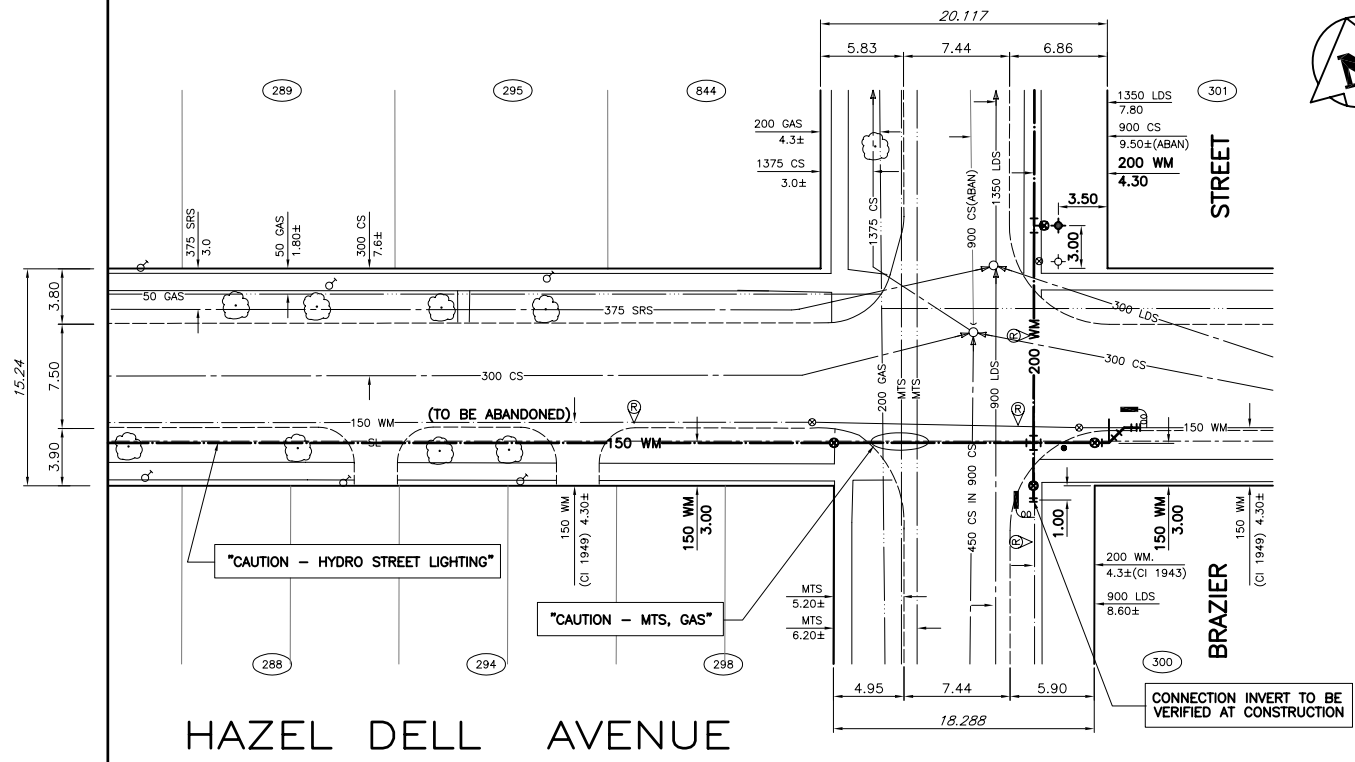


SEE DRAWING D-8804

SEE DRAWING D-8800



LINE NO	SIZE & TYPE	DISTANCE TO TOP	START/END LOCATION	DEPTH	COMPLETION	COMMENTS
288	150 COP	0.3	0.9 W OF TIE COR	UNKNOWN	32.0 W OF VALVE	
289	150 COP	0.6	0.6 W OF TIE COR	UNKNOWN	32.6 W OF VALVE	
291	300 COP	UNK	1.8 W OF TIE COR	UNKNOWN	84.1 W OF TIE COR	
295	150 COP	0.3	2.4 W OF TIE COR	UNKNOWN	15.5 W OF TIE COR	
298	200 COP	UNK	3.1 S OF SANS OF TIE COR	UNKNOWN	15.1 W OF TIE COR	
300	150 COP	0.9	2.1 S OF W/O TIE COR	UNKNOWN	7.9 W OF VALVE	
301	200 COP	UNK	0.9 E OF W/O TIE COR	UNKNOWN	3.7 E OF VALVE	
844 BRAZIER	200 COP	UNK	5.7 S OF W/O TIE COR	6.0 FR TIE FR DEOR	15.9 N OF TIE COR	EXP. MEAS FROM NE COR OF BRAZIER & HAZEL DELL

- GENERAL NOTES:**
- CHAINAGE IS ALONG SOUTH PROPERTY LINE OF HAZEL DELL AVENUE.
- CONSTRUCTION NOTES:**
- EXPOSE EXISTING WATERMAIN AT TIE-IN LOCATIONS AND CONFIRM INVERT PRIOR TO CONSTRUCTION.
  - INSTALL WATERMAIN BY TRENCHLESS METHODS.
  - ALL MATERIALS SHALL CONFORM TO THE CITY OF WINNIPEG STANDARD CONSTRUCTION SPECIFICATIONS.
  - MINIMUM COVER TO TOP OF WATERMAIN SHALL BE 2.4m.
  - NOTIFY ALL AFFECTED RESIDENTS AND BUSINESSES 24 HOURS IN ADVANCE OF ANY WATER SHUTDOWNS OR DISRUPTION OF SERVICE.



EXISTING	LEGEND-PLAN	PROPOSED	EXISTING	LEGEND-PLAN	PROPOSED	EXISTING	LEGEND-PLAN	PROPOSED
150 WM	WATERMAIN	150 WM	BEND			ANCHOR		
400 FM	FEEDERMAIN	400 FM	TEE			TREE		
300 LDS	LAND DRAINAGE SEWER	300 LDS	CURB STOP			LEGAL DIMENSION		
250 WWS	WASTEWATER SEWER	250 WWS	PLUG			SURVEY BAR		
300 CS	COMBINED SEWER	300 CS	MANHOLE			TRAFFIC SIGNAL		
200 FCM	FORCEMAIN	200 FCM	CATCHBASIN			GAS		
	JUNCTIONS		CURB INLET			HYDRO		
	HYDRANT		ADDRESS			MTS		
	VALVE		HYDRO POLE			SIDEWALK		
	REDUCER		LIGHT STANDARD			CURB		

**LOCATION APPROVED UNDERGROUND STRUCTURES**

SUPV. U/G STRUCTURES DATE COMMITTEE

**NOTE:**  
LOCATION OF UNDERGROUND STRUCTURES AS SHOWN ARE BASED ON THE BEST INFORMATION AVAILABLE. BUT NO GUARANTEE IS GIVEN THAT ALL EXISTING UTILITIES ARE SHOWN OR THAT THE GIVEN LOCATIONS ARE EXACT. CONFIRMATION OF EXISTENCE AND EXACT LOCATION OF ALL SERVICES MUST BE OBTAINED FROM THE INDIVIDUAL UTILITIES BEFORE PROCEEDING WITH CONSTRUCTION.

B.M. CITY OF WINNIPEG 12-057  
ELEV. 230.475m F.B. 2091

**WARDROP Engineering Inc.**

DESIGNED BY GWC CHECKED BY

DRAWN BY GMD APPROVED BY

HOR. SCALE: HAK  
VERTICAL: 1 : 50

ISSUED FOR TENDER 05.07.04 HAK  
ISSUED FOR APPROVAL 05.06.29 HAK

DATE 05.05.20

ORIGINAL DRAWING REVISION \* SEALED BY H.A.K. KATZ 05.06.30

CONSULTANT DRAWING NO. 0500120400-DWG-C4010

**THE CITY OF WINNIPEG**  
WATER AND WASTE DEPARTMENT

2005 WATERMAIN RENEWALS CONTRACT No. 9

HAZEL DELL AVENUE  
50m WEST OF BRAZIER STREET TO  
BRAZIER STREET

CITY DRAWING NUMBER D-8801  
SHEET 10 OF 14

C4010