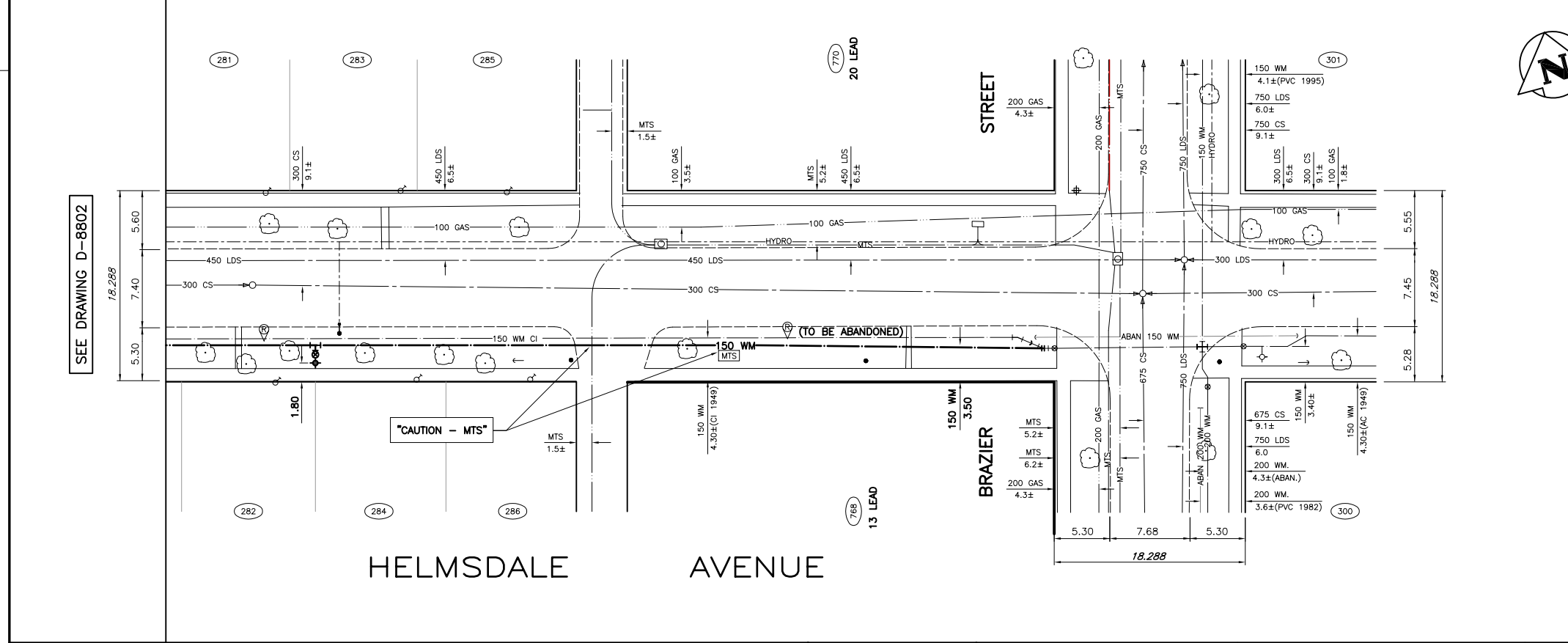


ID/ST. No.	SIZE & TYPE	DISTANCE TO PL.	STOP COCK LOCATION		CORPORATION COCK LOC.	COMMENTS
			SHORT	LONG		
281	20 COP	0.3	8.2 E OF W COR LINE	UNKNOWN	48.8 E OF EFD	
282	20 COP	0.3	6.9 W OF EHL	UNKNOWN	45.7 E OF EFD	
283	20 COP	0.3	0.6 W OF EHL	UNKNOWN	57.9 E OF EFD	
284	20 COP	0.3	0.6 W OF E COR LINE	UNKNOWN	60 E OF EFD	
285	20 COP	0.3	4.2 W OF E COR LINE	UNKNOWN	52.1 W OF VALVE	
286	13 COP	0.3	UNKNOWN	4.4 W OF EPL	UNKNOWN	
76R/BRAZIER	13 LEAD	0.3	1.5 S OF ST. OF USE	UNKNOWN	12.0 S OF VALVE BOX	
770/BRAZIER	20 LEAD	0.3	1.5 S OF ST. OF USE	UNKNOWN	26.5 N OF VALVE	



- GENERAL NOTES:**
- CHAINAGE IS ALONG SOUTH PROPERTY LINE OF HELMSDALE AVENUE.
- CONSTRUCTION NOTES:**
- EXPOSE EXISTING WATERMAIN AT TIE-IN LOCATIONS AND CONFIRM INVERT PRIOR TO CONSTRUCTION.
 - INSTALL WATERMAIN BY TRENCHLESS METHODS.
 - ALL MATERIALS SHALL CONFORM TO THE CITY OF WINNIPEG STANDARD CONSTRUCTION SPECIFICATIONS.
 - MINIMUM COVER TO TOP OF WATERMAIN SHALL BE 2.4m.
 - NOTIFY ALL AFFECTED RESIDENTS AND BUSINESSES 24 HOURS IN ADVANCE OF ANY WATER SHUTDOWNS OR DISRUPTION OF SERVICE.



EXISTING	LEGEND-PLAN	PROPOSED	EXISTING	LEGEND-PLAN	PROPOSED	EXISTING	LEGEND-PLAN	PROPOSED
150 WM	WATERMAIN	150 WM	BEND			ANCHOR		
400 FM	FEEDERMAIN	400 FM	TEE			TREE		
300 LDS	LAND DRAINAGE SEWER	300 LDS	CURB STOP			LEGAL DIMENSION		
250 WWS	WASTEWATER SEWER	250 WWS	PLUG			SURVEY BAR		
300 CS	COMBINED SEWER	300 CS	MANHOLE			TRAFFIC SIGNAL		
200 FCM	FORCEMAIN	200 FCM	CATCHBASIN			GAS		
	JUNCTIONS		CURB INLET			HYDRO		
	HYDRANT		ADDRESS			MTS		
	VALVE		HYDRO POLE			SIDEWALK		
	REDUCER		LIGHT STANDARD			CURB		

LOCATION APPROVED UNDERGROUND STRUCTURES

SUPV. U/G STRUCTURES DATE COMMITTEE

NOTE: LOCATION OF UNDERGROUND STRUCTURES AS SHOWN ARE BASED ON THE BEST INFORMATION AVAILABLE. BUT NO GUARANTEE IS GIVEN THAT ALL EXISTING UTILITIES ARE SHOWN OR THAT THE GIVEN LOCATIONS ARE EXACT. CONFIRMATION OF EXISTENCE AND EXACT LOCATION OF ALL SERVICES MUST BE OBTAINED FROM THE INDIVIDUAL UTILITIES BEFORE PROCEEDING WITH CONSTRUCTION.

B.M. CITY OF WINNIPEG 12-064
ELEV. 230.413m

F.B. 2091

WARDROP Engineering Inc.

DESIGNED BY	GWC	CHECKED BY	
DRAWN BY	NL	APPROVED BY	
HOR. SCALE:	1 : 250	RELEASED FOR CONSTRUCTION	
VERTICAL:	1 : 50		
DATE	05.05.20	DATE	

ORIGINAL DRAWING REVISION * = SEALED BY H.A.K. KATZ 05.06.30

CONSULTANT DRAWING NO. 0500120400-DWG-C4012

THE CITY OF WINNIPEG
WATER AND WASTE DEPARTMENT

2005 WATERMAIN RENEWALS
CONTRACT No. 9

HELMSDALE AVENUE
BRAZIER STREET TO
85m WEST OF BRAZIER STREET

CITY DRAWING NUMBER
D-8803

SHEET **12** OF **14**

C4012