

The "W" Winnipeg Walkway System

Interior Directional Sign

Sign #: G35a W part: Graham Skywalk Floor: 2

Sign Type: type 1 "W" type 1
 type 2 "W" type 2
 type 3 elevator
 existing sign special

Size: full size
 3/4 size
 2/3 size
 1/2 size

"W" Specifications: 3-D "W" logo
 flat "W" logo

Installation: wall
 ceiling



Notes:

The "W" Winnipeg Walkway System

Reverse Acrylic Screen Print

Sign #: **G36**

W part: **Graham Skywalk**

Floor: **2**

Sign Type:

- type 1
- type 2
- type 3
- existing sign
- "W" type 1
- "W" type 2
- elevator
- special

Size:

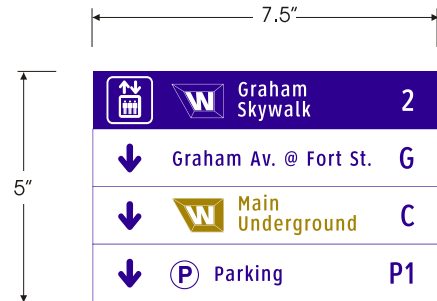
- full size
- 3/4 size
- 2/3 size
- 1/2 size

"W" Specifications:

- 3-D "W" logo
- flat "W" logo

Installation:

- wall
- ceiling



Notes: Reverse 1/8" acrylic screen print.



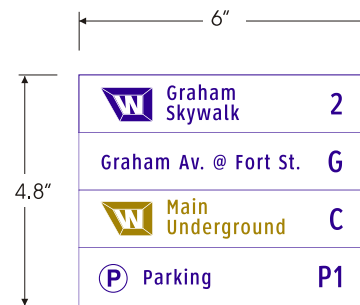
The "W" Winnipeg Walkway System

Reverse Acrylic Screen Print

Sign #: G36a W part: Graham Skywalk Floor: 2

Sign Type:		Size:	"W" Specifications:	Installation:
<input type="checkbox"/> type 1	<input type="checkbox"/> "W" type 1	<input type="checkbox"/> full size	<input type="checkbox"/> 3-D "W" logo	<input checked="" type="checkbox"/> wall
<input type="checkbox"/> type 2	<input type="checkbox"/> "W" type 2	<input type="checkbox"/> 3/4 size	<input type="checkbox"/> flat "W" logo	<input type="checkbox"/> ceiling
<input type="checkbox"/> type 3	<input checked="" type="checkbox"/> elevator	<input type="checkbox"/> 2/3 size		
<input type="checkbox"/> existing sign	<input type="checkbox"/> special	<input type="checkbox"/> 1/2 size		

Notes: Reverse 1/8" acrylic screen print. Replace existing elevator plaque.
Vendor to confirm size.



The "W" Winnipeg Walkway System

Interior Directional Sign

Sign #: **G37**

W part: **Main Underground**

Floor: **2**

Sign Type:

- | | |
|--|-------------------------------------|
| <input type="checkbox"/> type 1 | <input type="checkbox"/> "W" type 1 |
| <input type="checkbox"/> type 2 | <input type="checkbox"/> "W" type 2 |
| <input checked="" type="checkbox"/> type 3 | <input type="checkbox"/> elevator |
| <input type="checkbox"/> existing sign | <input type="checkbox"/> special |

Size:

- | |
|---|
| <input checked="" type="checkbox"/> full size |
| <input type="checkbox"/> 3/4 size |
| <input type="checkbox"/> 2/3 size |
| <input type="checkbox"/> 1/2 size |

"W" Specifications:

- | |
|--|
| <input checked="" type="checkbox"/> 3-D "W" logo |
| <input type="checkbox"/> flat "W" logo |

Installation:

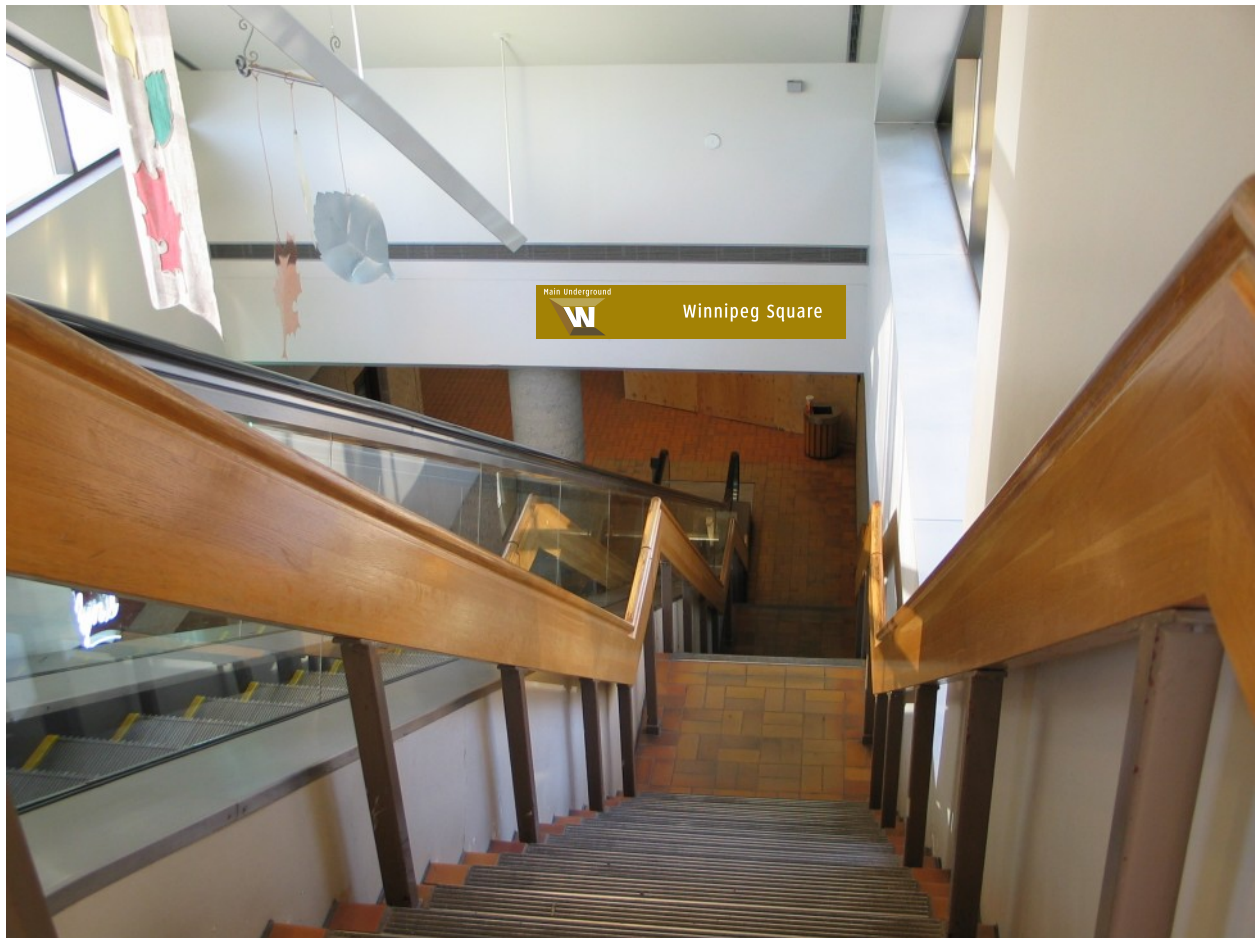
- | |
|--|
| <input checked="" type="checkbox"/> wall |
| <input type="checkbox"/> ceiling |

Main Underground



Winnipeg Square

Notes:



The "W" Winnipeg Walkway System

Interior Directional Sign

Sign #: S1a side 1

W part: Main Underground

Floor: G

Sign Type: _____

- type 1
- type 2
- type 3
- "W" sign
- existing sign
- elevator plaque
- special

Size: _____

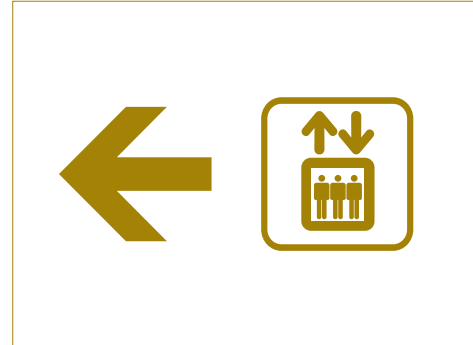
- full size
- 3/4 size
- 2/3 size
- 1/2 size

"W" Specifications: _____

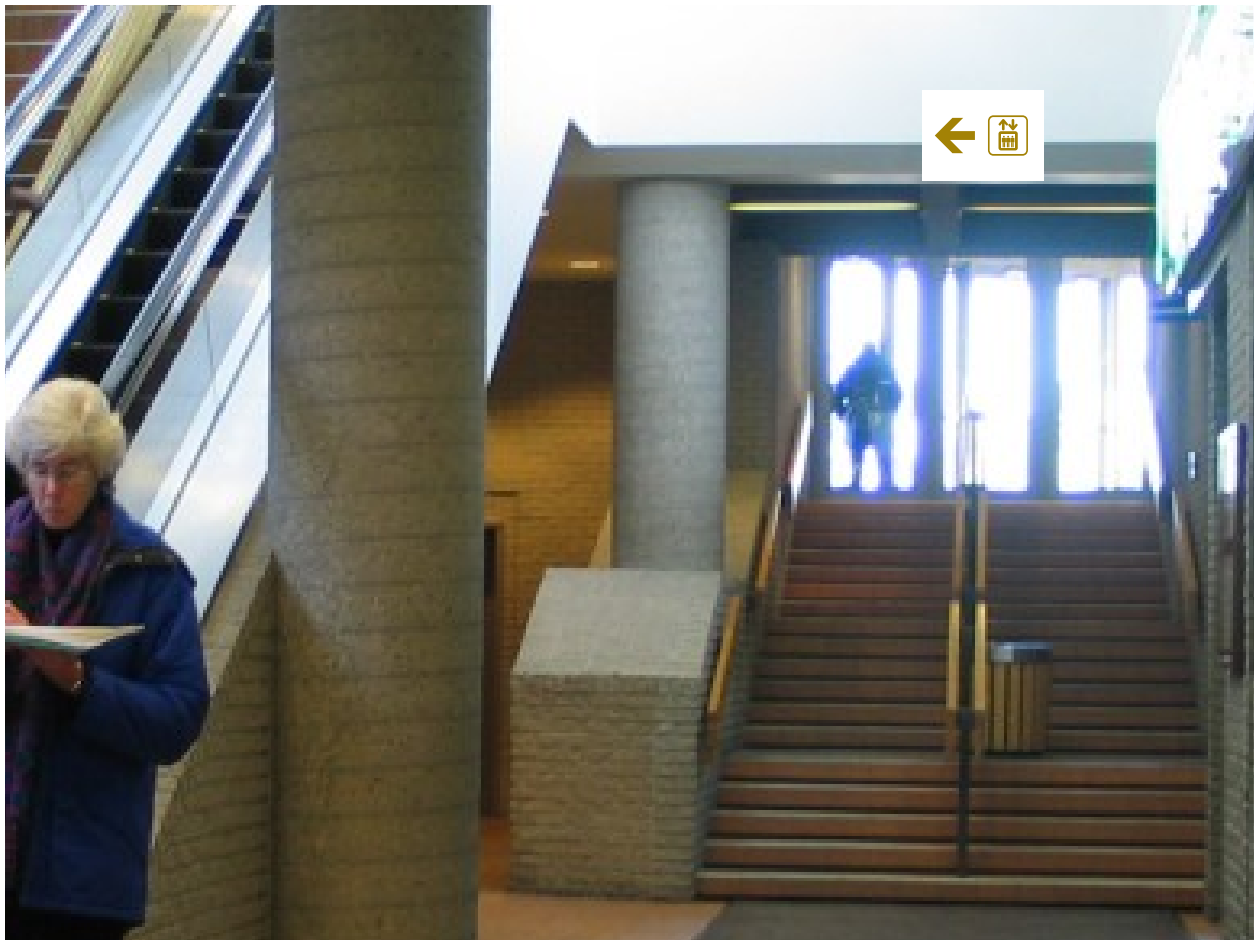
- 3-D "W" logo
- flat "W" logo

Installation: _____

- wall
- ceiling



Notes:



Sign #: **S1a side 2**

W part: **Main Underground**

Floor: **G**

Sign Type:

- type 1
- type 2
- type 3
- "W" sign
- existing sign
- elevator plaque
- special

Size:

- full size
- 3/4 size
- 2/3 size
- 1/2 size

"W" Specifications:

- 3-D "W" logo
- flat "W" logo

Installation:

- wall
- ceiling



Notes:

See S1a side 1 photo for location.

The "W" Winnipeg Walkway System

Interior Directional Sign

Sign #: **S1b**

W part: **Main Underground**

Floor: **G**

Sign Type:

- type 1
- type 2
- type 3
- "W" sign
- existing sign
- elevator plaque
- special

Size:

- full size
- 3/4 size
- 2/3 size
- 1/2 size

"W" Specifications:

- 3-D "W" logo
- flat "W" logo

Installation:

- wall
- ceiling

Winnipeg Square Ways out



Graham Skywalk

Graham Skywalk



Graham & Fort



Notes:



The "W" Winnipeg Walkway System

Interior Directional Sign

Sign #: **S1c**

W part: **Main Underground**

Floor: **G**

Sign Type:

- type 1
- type 2
- type 3
- "W" sign
- existing sign
- elevator plaque
- special

Size:

- full size
- 3/4 size
- 2/3 size
- 1/2 size

"W" Specifications:

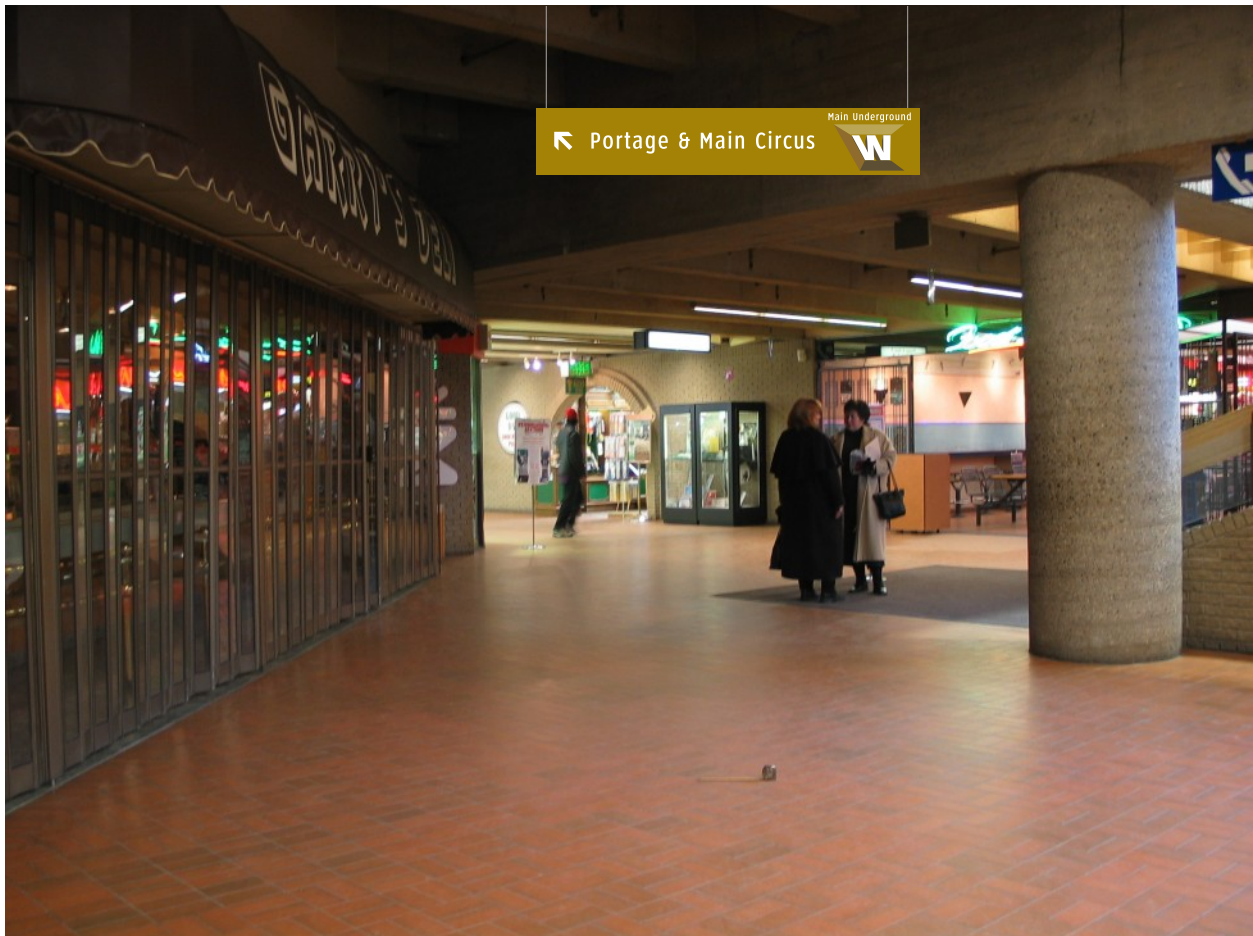
- 3-D "W" logo
- flat "W" logo

Installation:

- wall
- ceiling



Notes:



The "W" Winnipeg Walkway System

Interior Directional Sign

Sign #: **S3 - side 1**

W part: **Main Underground**

Floor: **G**

Sign Type:

- type 1
- type 2
- type 3
- "W" sign
- existing sign
- elevator plaque
- special

Size:

- full size
- 3/4 size
- 2/3 size
- 1/2 size

"W" Specifications:

- 3-D "W" logo
- flat "W" logo

Installation:

- wall
- ceiling

Winnipeg Square Way Out



Notes:



The "W" Winnipeg Walkway System

Interior Directional Sign

Sign #: **S3 - side 2**

W part: **Main Underground**

Floor: **G**

Sign Type:

- type 1
- type 2
- type 3
- "W" sign
- existing sign
- elevator plaque
- special

Size:

- full size
- 3/4 size
- 2/3 size
- 1/2 size

"W" Specifications:

- 3-D "W" logo
- flat "W" logo

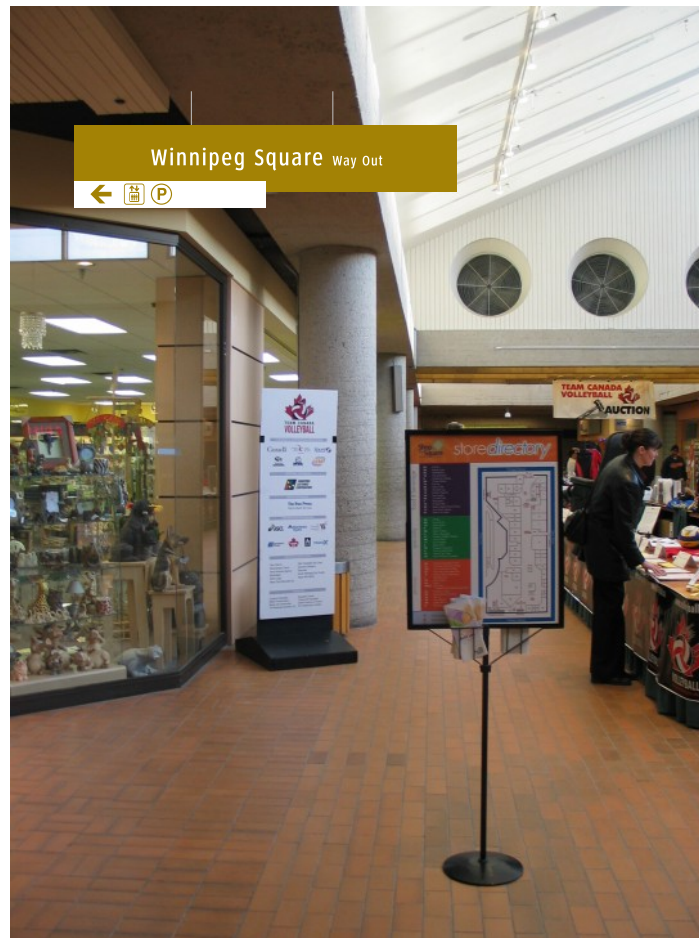
Installation:

- wall
- ceiling

Winnipeg Square way out



Notes:



The "W" Winnipeg Walkway System

Interior Directional Sign

Sign #: **S6**

W part: **Main Underground**

Floor: **G**

Sign Type:

- type 1
- type 2
- type 3
- "W" sign
- existing sign
- elevator plaque
- special

Size:

- full size
- 3/4 size
- 2/3 size
- 1/2 size

"W" Specifications:

- 3-D "W" logo
- flat "W" logo

Installation:

- wall
- ceiling

Main Underground



Portage & Main Circus



Notes: Overhead on white bulkhead.

