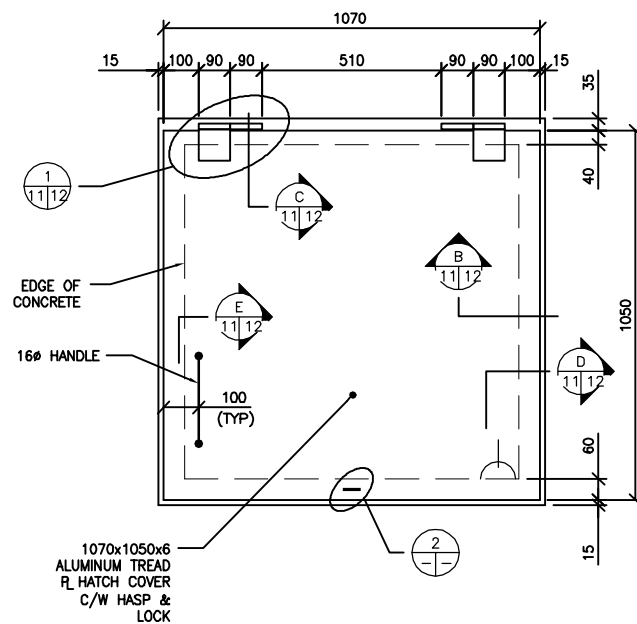
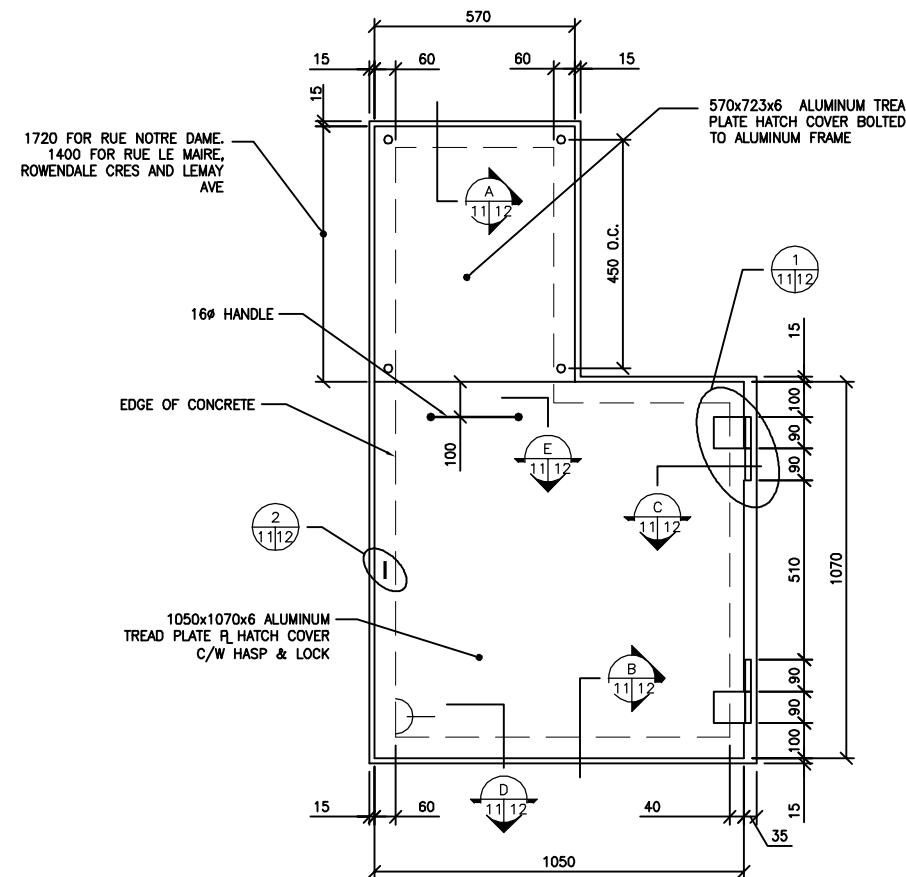


1 DETAIL
1:10



2 DETAIL
1:10



3 DETAIL
1:10



A = DETAIL NUMBER
B = DRAWING WHERE TAKEN
C = DRAWING WHERE SHOWN

NOTE:
CONTRACTOR TO CONFIRM ALL
DIMENSIONS SHOWN FOR HATCHES.

METRIC
WHOLE NUMBERS INDICATE MILLIMETRES
DECIMALIZED NUMBERS INDICATE METRES



B.M. ELEV.		FIELD BOOK #:		CITY OF WINNIPEG WATER AND WASTE ENGINEERING DIVISION		ENGINEER'S SEAL		THE CITY OF WINNIPEG WATER AND WASTE DEPARTMENT		SHEET 15 OF 16	
POSTED TO LBIS						ORIGINAL SIGNED BY K.R. ZUREK 05/08/12				2005 OUTFALL GATE CHAMBER UPGRADES RUE LE MAIRE, RUE NOTRE DAME, ROWENDALE CRESCENT AND LEMAY AVENUE GATE CHAMBERS HATCH DETAILS	
DESIGNED BY	DGS	CHECKED BY	TW	HOR. SCALE AS		RELEASED FOR CONSTRUCTION		BID OPPORTUNITY: 490-2005		LD-3152	
DRAWN BY	WKT/CJH	APPROVED BY	KZ	VERTICAL SHOWN				FILENAME : LD-3152.dwg		LD-3152	
NO. REVISIONS		DATE	BY	DATE		2005 08 12		PLOT DATE: 2005 08 12			