

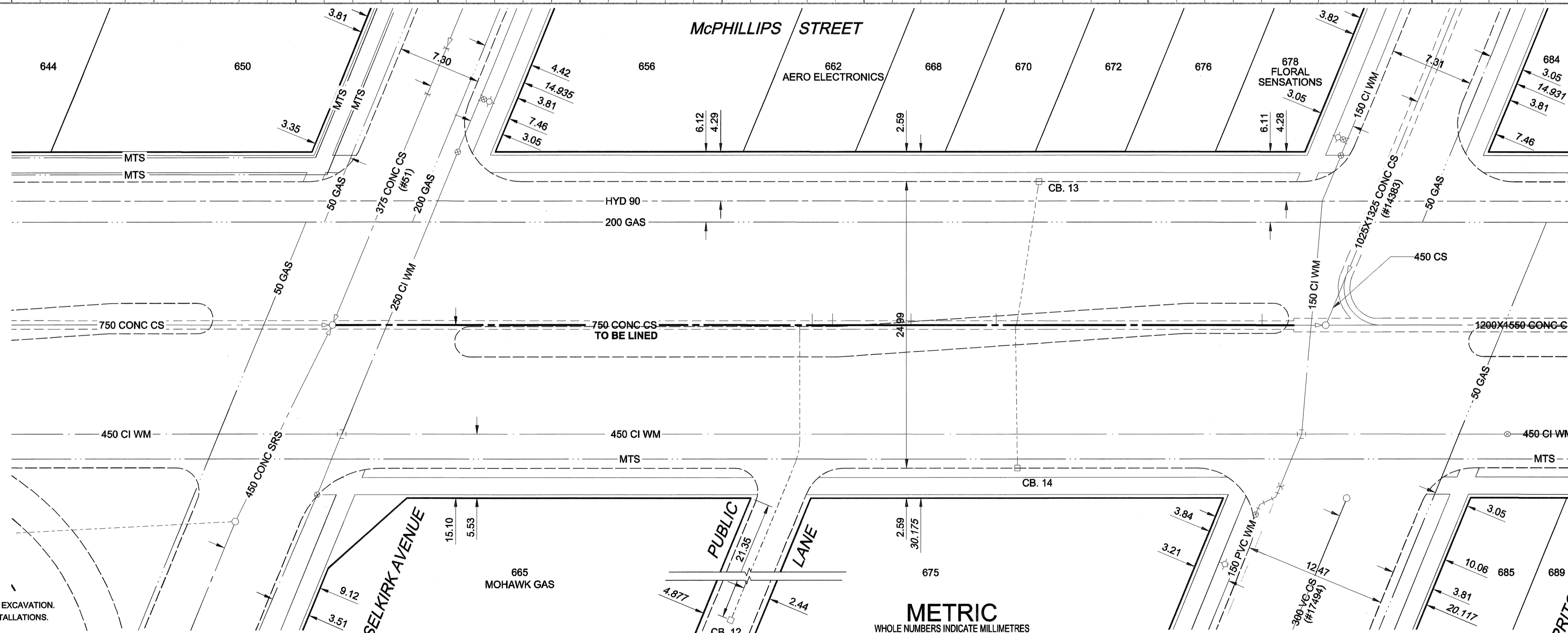
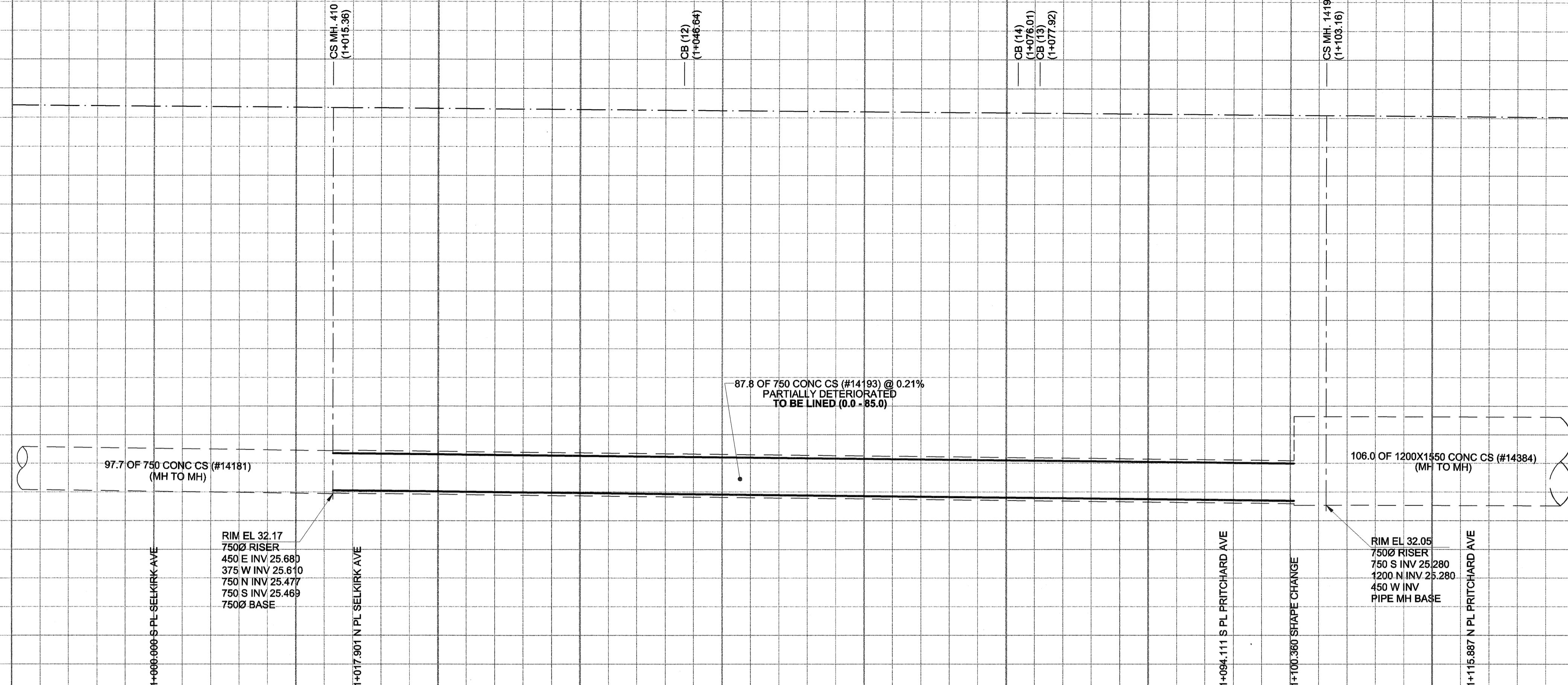
D SIZE 22" x 34" (599mm x 864mm)

PLOT: 05/09/22 4:27:59 PM

UMA FILE NAME: D265-195-01\_00-C-0006\_RX.dwg Saved By: kberard

EXISTING FEATURES  
234.0  
233.0  
232.0  
231.0  
230.0  
229.0  
228.0  
227.0  
226.0  
225.0  
CHAINAGE ALONG E.P.

234.0  
233.0  
232.0  
231.0  
230.0  
229.0  
228.0  
227.0  
226.0  
225.0



**SEWER JUNCTION INFORMATION\***

REF. MH	DIST FROM	SIZE	CLOCK AT
410	41.10	1500	01
410	42.20	1500	10
410	44.00	1500	11
410	50.90	1500	11
410	58.40	1500	11
410	69.10	2000	02
410	69.20	2000	11
410	81.80	1500	11

\*JUNCTION LOCATION FROM VIDEO INSPECTION

**WARNING**  
IF POWER EQUIPMENT OR EXPLOSIVES ARE TO BE USED FOR EXCAVATION ON THIS PROJECT, THE CONTRACTOR MUST:  
1) NOTIFY THE GAS COMPANY OF THE PROPOSED LOCATION OF EXCAVATION.  
2) TAKE PRECAUTION TO AVOID DAMAGE TO GAS COMPANY INSTALLATIONS.  
SEE PROVINCIAL REGULATION 140/92 FOR DETAILS

EXISTING	LEGEND - PLAN	NEW	EXISTING	LEGEND - PLAN	NEW	EXISTING	LEGEND - PROFILE	NEW
150 mm WM	WATERMAIN	150 mm WM	CURB STOP	150 mm WM	WATERMAIN	150 mm WM	WATERMAIN	150 mm WM
Hydrant	HYDRANT	Reducer	REDUCER	Hydrant	HYDRANT	Reducer	REDUCER	Hydrant
Valve	VALVE	Coupling	COUPLING	Valve	VALVE	Coupling	COUPLING	Valve
300 mm LDS	LAND DRAINAGE SEWER	300 mm LDS	ANODE	300 mm LDS	LAND DRAINAGE SEWER	300 mm LDS	LAND DRAINAGE SEWER	300 mm LDS
250 mm WWS	WASTE WATER SEWER	250 mm WWS	HYDRO	250 mm WWS	WASTE WATER SEWER	250 mm WWS	WASTE WATER SEWER	250 mm WWS
Manhole	MANHOLE	MTS	MTS	Manhole	MANHOLE	MTS	MTS	Manhole
Catch Basin	CATCH BASIN	Gas	GAS	Catch Basin	CATCH BASIN	Gas	GAS	Catch Basin
Curb Inlet	CURB INLET	Testhole	TESTHOLE	Curb Inlet	CURB INLET	Testhole	TESTHOLE	Curb Inlet
Culvert	CULVERT	Lamp Standard	LAMP STANDARD	Culvert	CULVERT	Lamp Standard	LAMP STANDARD	Culvert
Pipe Abandonments	PIPE ABANDONMENTS	Tree	TREE	Pipe Abandonments	PIPE ABANDONMENTS	Tree	TREE	Pipe Abandonments
Survey Bar	SURVEY BAR			Survey Bar	SURVEY BAR			Survey Bar

**LOCATION APPROVED**  
UNDERGROUND STRUCTURES

SUPR. U/G STRUCTURES COMMITTEE DATE

**NOTE:**  
LOCATION OF UNDERGROUND STRUCTURES AS SHOWN ARE BASED ON THE BEST INFORMATION AVAILABLE. BUT NO GUARANTEE IS GIVEN THAT ALL EXISTING UTILITIES ARE SHOWN OR THAT THE GIVEN LOCATIONS ARE EXACT. CONFIRMATION OF EXISTENCE AND EXACT LOCATION OF ALL SERVICES MUST BE OBTAINED FROM THE INDIVIDUAL UTILITIES BEFORE PROCEEDING WITH CONSTRUCTION.

NO.	ISSUED FOR CONSTRUCTION	05/08/22	KMB
0	ISSUED FOR CONSTRUCTION	05/08/22	KMB
NO.	REVISIONS	Y/M/M/G/D	BY

UMA | AECOM

© 2005 UMA ENGINEERING LTD. ALL RIGHTS RESERVED.

DESIGNED BY: ALD / MJR  
DRAWN BY: KMB  
HOR. SCALE: 1:250  
VERT. SCALE: 1:50

CHECKED BY: [Signature]  
APPROVED BY: [Signature]  
RELEASED FOR CONSTRUCTION: [Signature]

DATE: [Signature]

PROFESSIONAL'S SEAL

PROVINCE OF MANITOBA  
22 APR 05  
C. C. MACEY  
REGISTERED ENGINEER

CONSULTANT DRAWING NO. 06  
D265-195-01

Winnipeg

**THE CITY OF WINNIPEG**  
WATER AND WASTE DEPARTMENT

2005 COMBINED SEWER RENEWALS  
BY CIPP LINING

McPHILLIPS STREET  
MH AT SELKIRK AVENUE  
TO MH AT PRITCHARD AVENUE

SHEET 6 OF 15  
CITY DRAWING NUMBER  
**05621** REV 0

BID OPPORTUNITY NO. 498-2005