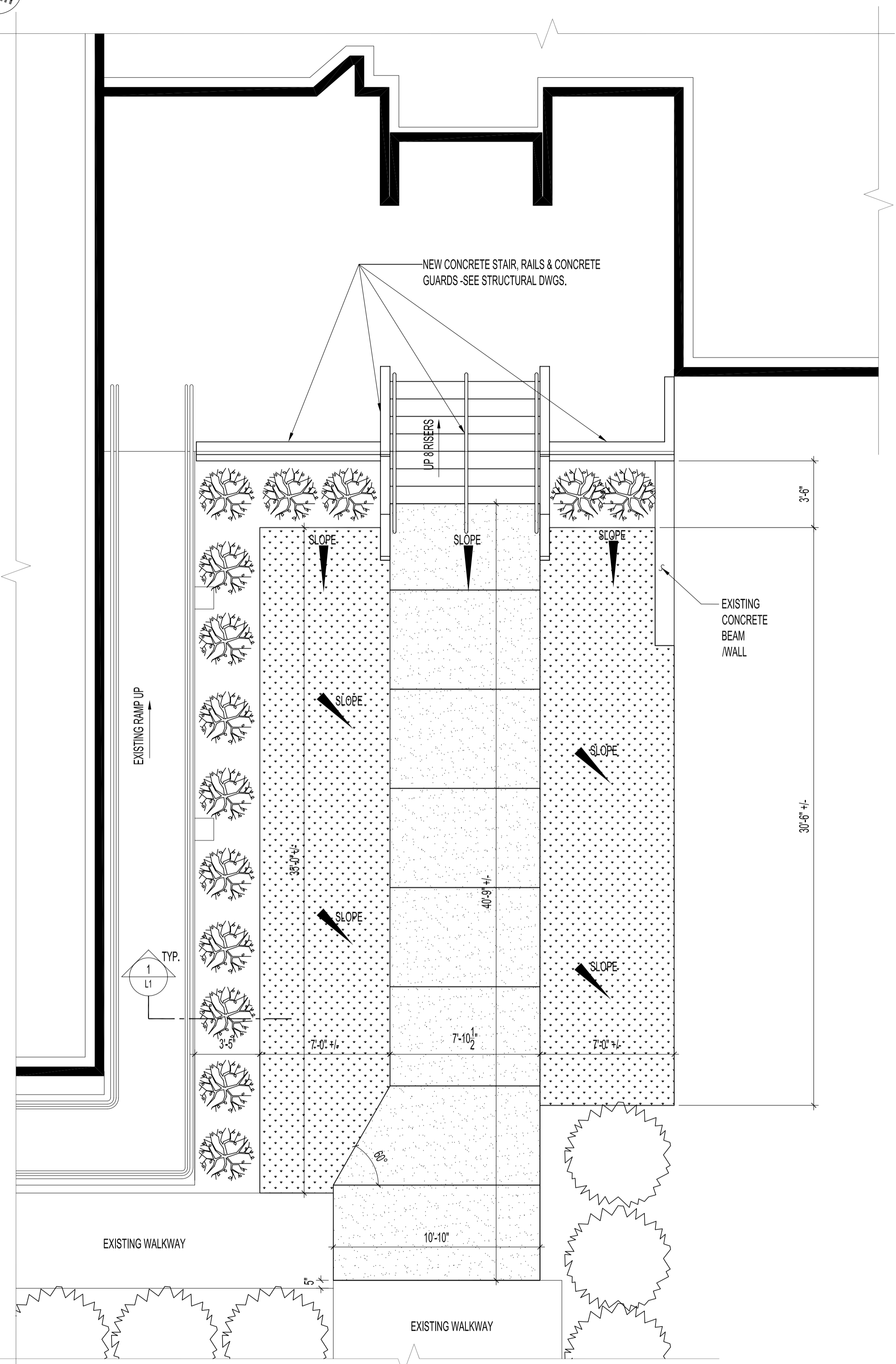
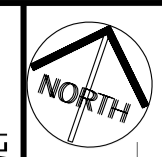
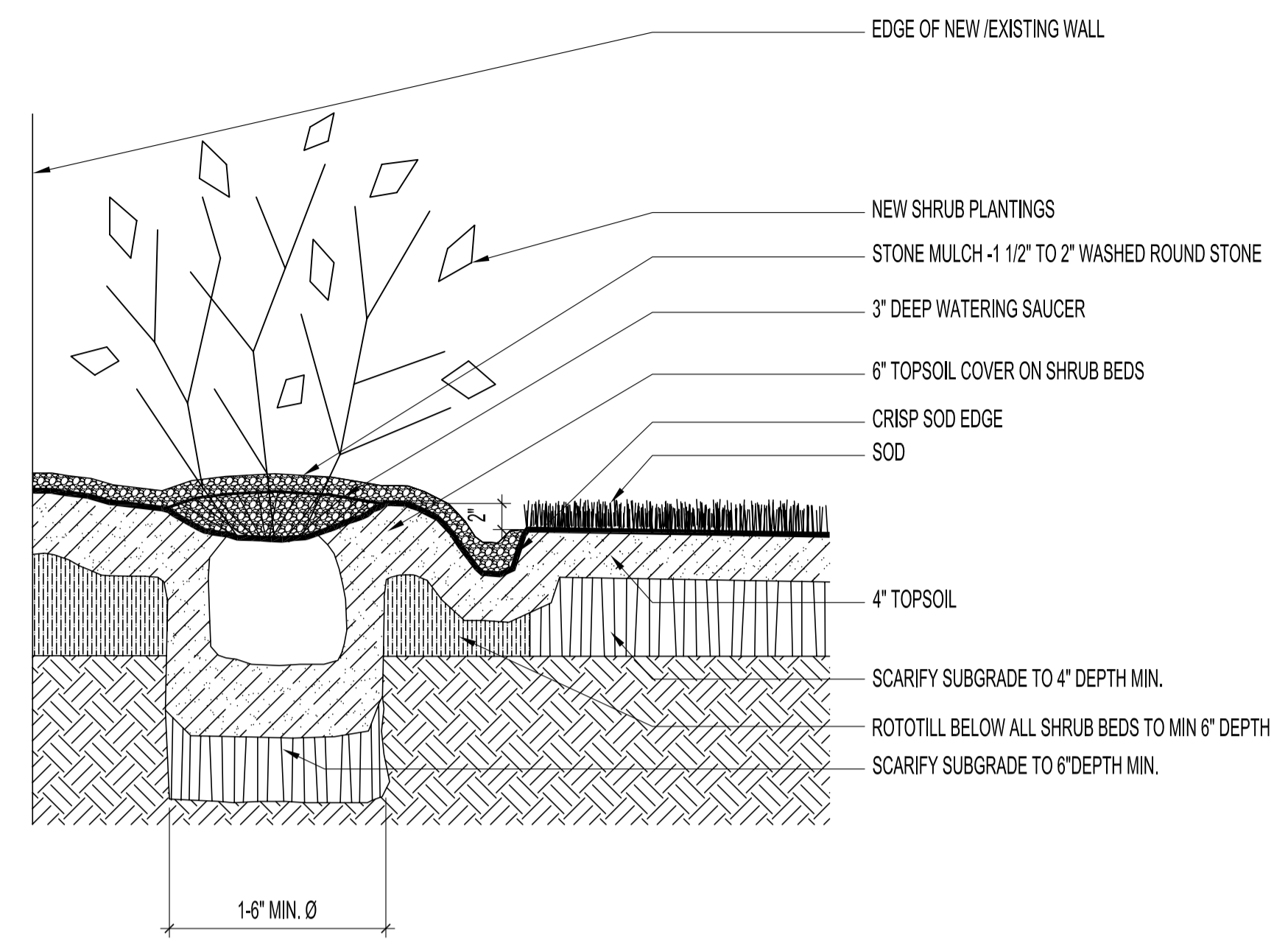


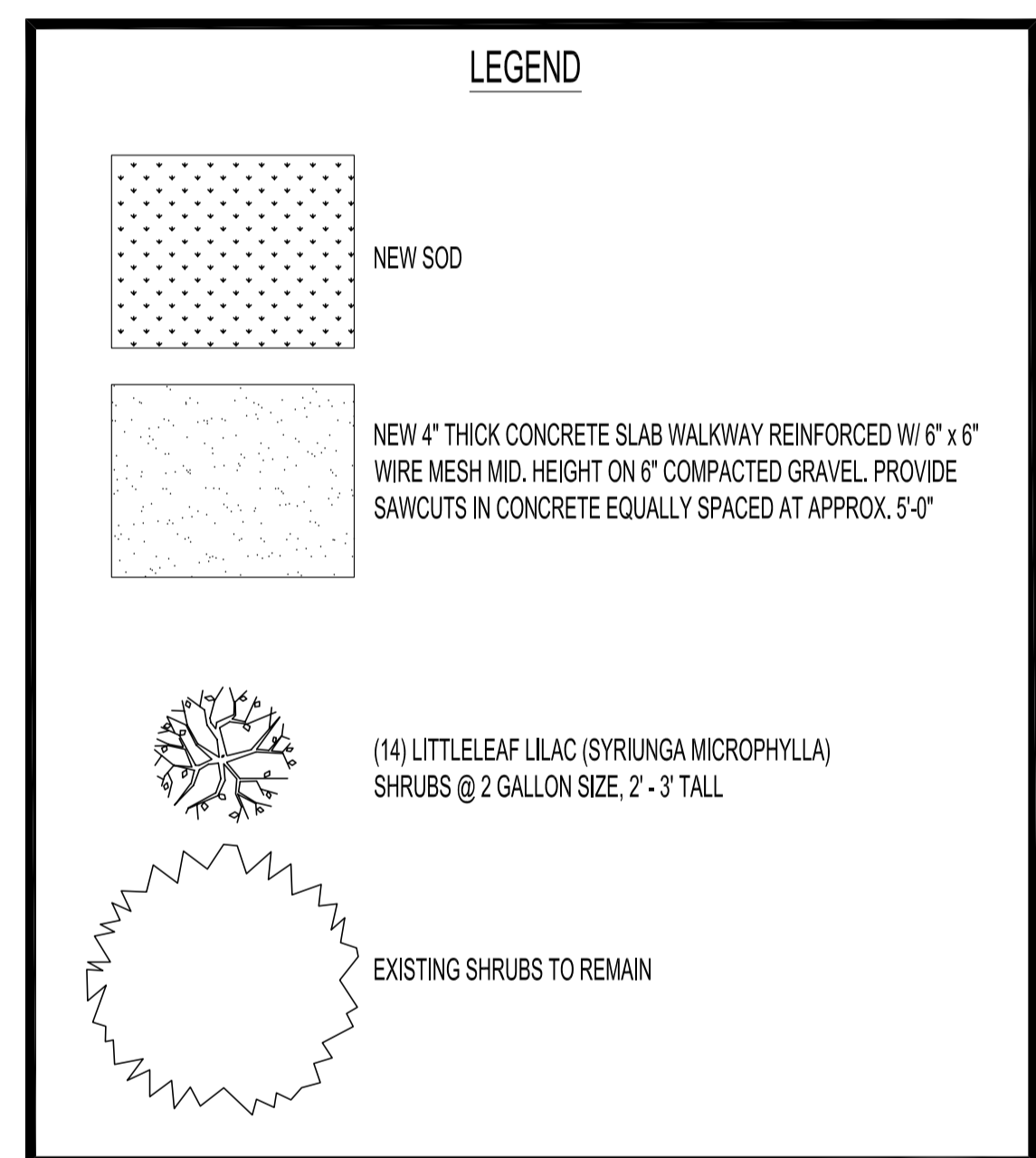
FILE NAME: 200213610.dwg L1
 DATE: 2005.08.19
 DESCRIPTION: PARTIAL LANDSCAPE PLAN-RENOVATION
 PROJECT No: 2002-136
 ADDRESS: 227 PROVENCHER BLVD.



PARTIAL LANDSCAPE PLAN -RENOVATION
 SCALE: 1/4"=1'-0"



1 TYPICAL SECTION -SHRUB PLANTING
 SCALE: 1"=1'-0"



NOTES :
 LANDSCAPING NOTES:
 1. FOR SODDING SPECIFICATIONS REFER TO CITY OF WINNIPEG'S STANDARD CONSTRUCTION SPECIFICATIONS SECTION CW3610-R8.

ORIGINAL SEALED BY:
 R.K. FOK LI Arch.
 Date: 2005.08.19

NO.	REVISION/DESCRIPTION	BY	DATE
SEALS			

DRAWN BY	CHECKED BY	APPROVED
MMK		
DATE 2005.08.19	USER APPROVAL	

CITY OF WINNIPEG
 PLANNING, PROPERTY &
 DEVELOPMENT DEPARTMENT
 CIVIC ACCOMMODATIONS DIVISION
 300 - 65 GARRY ST. R3C 4K4

PROJECT
 DISTRICT 5 POLICE STATION
 CONCRETE ENTRANCE DECK UPGRADE
 (FRONT & REAR)
 227 PROVENCHER BOULEVARD

SHEET TITLE
 PARTIAL LANDSCAPE PLAN
 RENOVATION

SCALE	PROJECT NO.	SHEET NO.
AS SHOWN	2002-136	L1