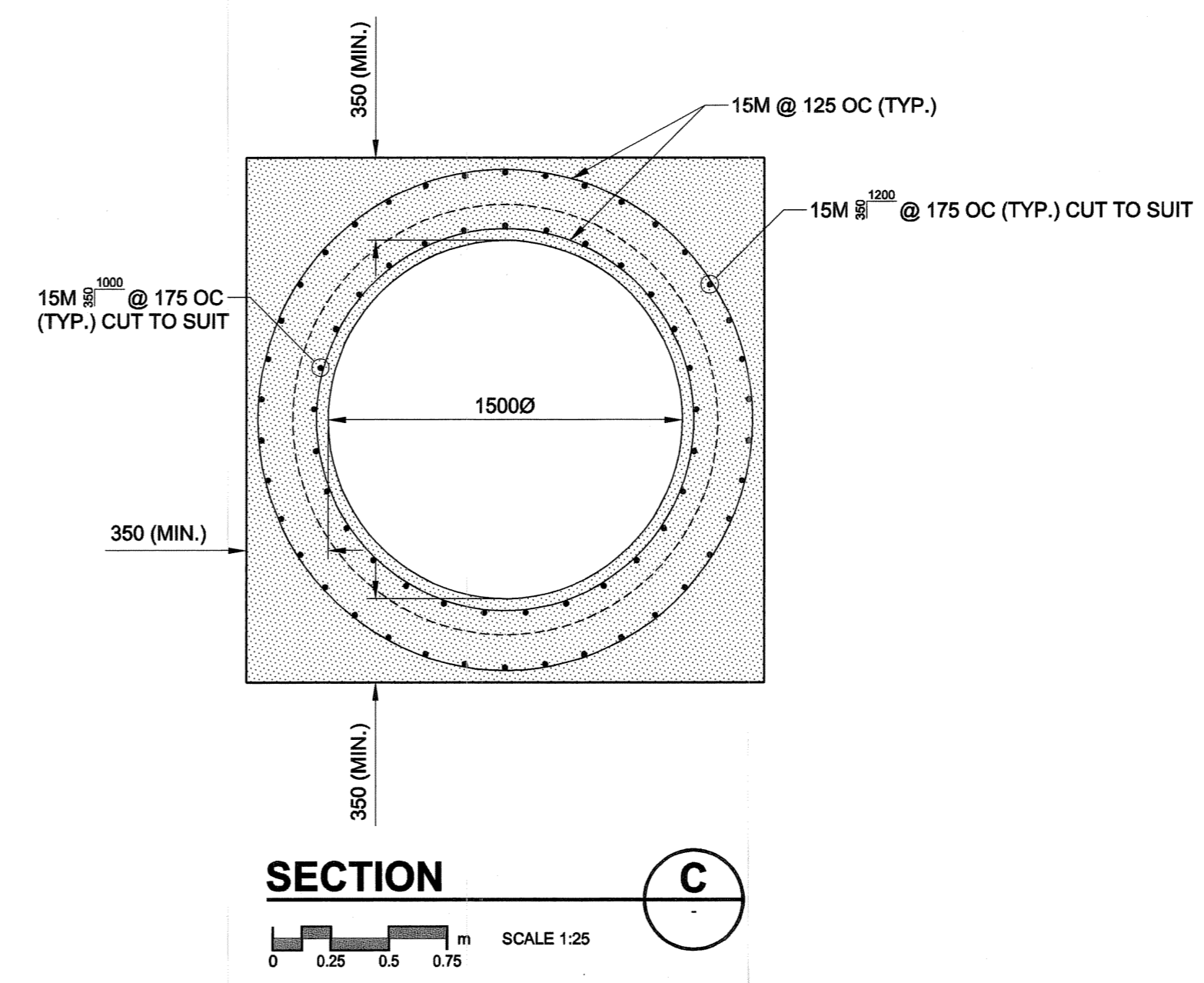
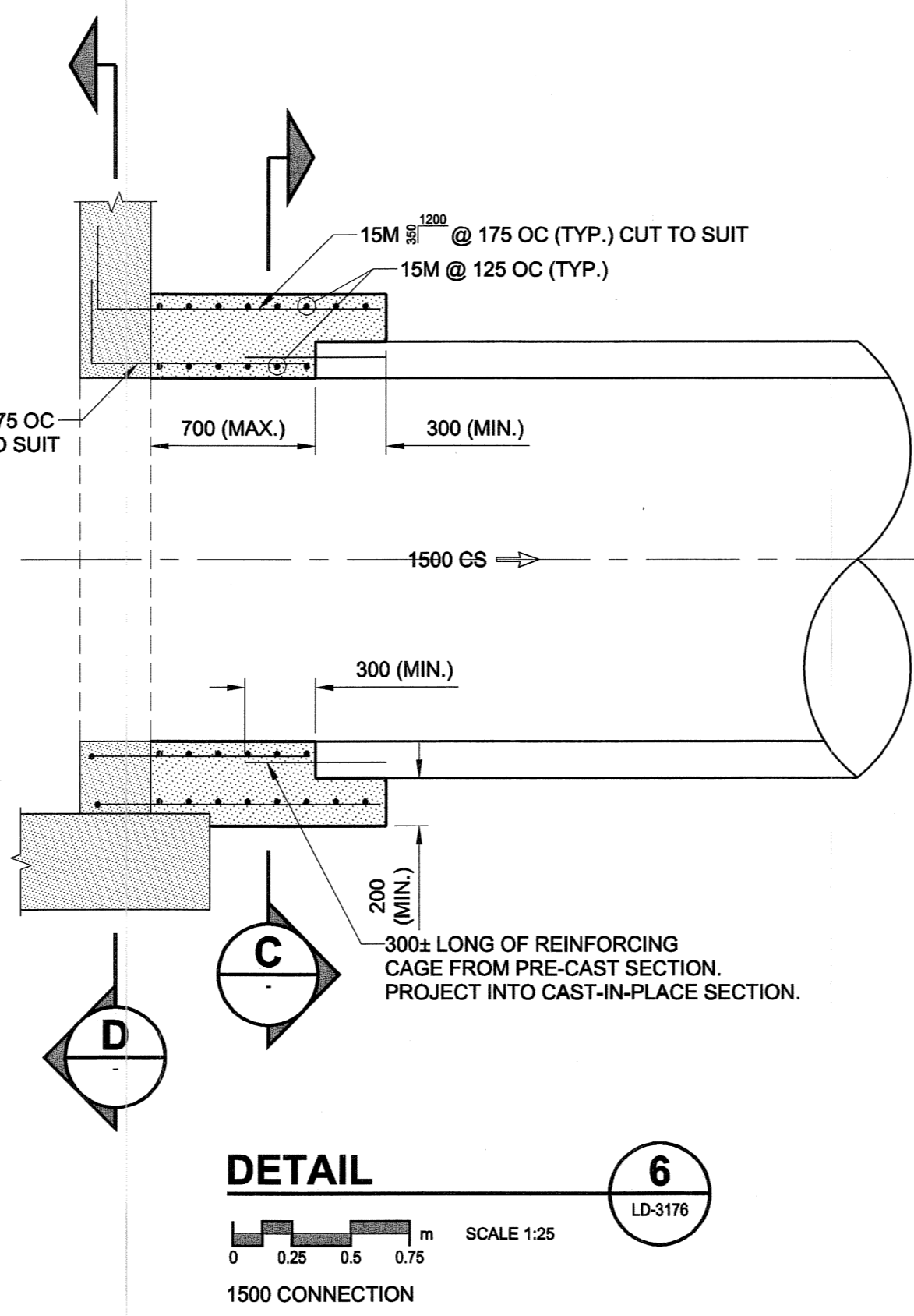
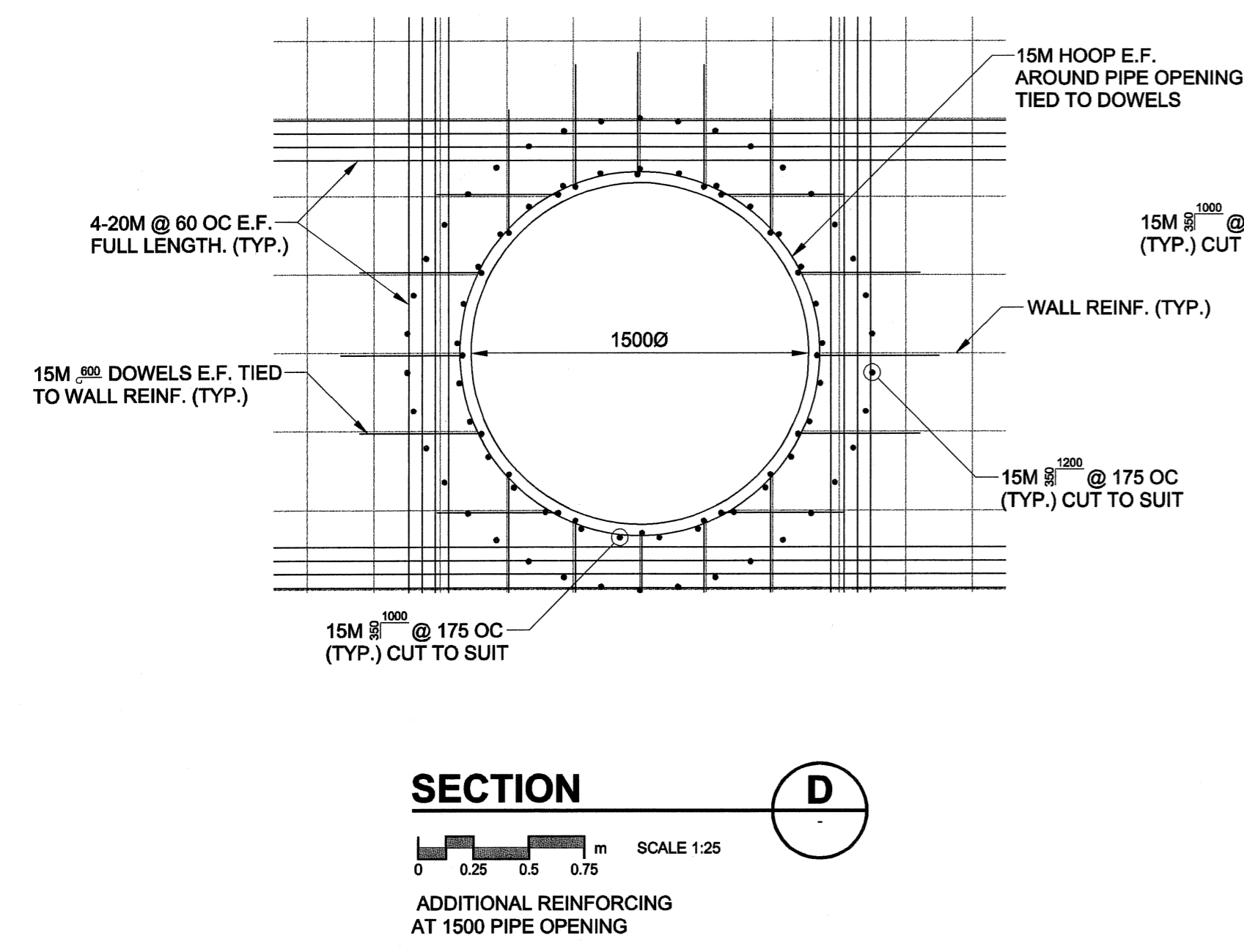


LAP TABLE	
BAR	LAP
10M	500
15M	700
20M	870

**NOTE:**  
CLEAR COVER FOR REINFORCING SHALL BE 50mm ± 12mm FOR CAST-IN-PLACE SLABS AND CAST-IN-PLACE BEAMS AND WALLS.



**LOCATION APPROVED UNDERGROUND STRUCTURES**

SUPR. U/G STRUCTURES DATE COMMITTEE

**NOTE:**  
LOCATION OF UNDERGROUND STRUCTURES AS SHOWN ARE BASED ON THE BEST INFORMATION AVAILABLE. BUT NO GUARANTEE IS GIVEN THAT ALL EXISTING UTILITIES ARE SHOWN OR THAT THE GIVEN LOCATIONS ARE EXACT. CONFIRMATION OF EXISTENCE AND EXACT LOCATION OF ALL SERVICES MUST BE OBTAINED FROM THE INDIVIDUAL UTILITIES BEFORE PROCEEDING WITH CONSTRUCTION.

BM 35-005	Tilt. in S. wall of Centennial Concert Hall, Market Ave., 2.1m W. of S.E. Cor. of Bldg.		
ELEV 232.623m			
NO.	REVISIONS	YYMMDD	BY
0	ISSUED FOR CONSTRUCTION	05/08/29	ADL

DESIGNED BY GEB		CHECKED BY [Signature]	
DRAWN BY ADL		APPROVED BY [Signature]	
HOR. SCALE AS NOTED	VERT. SCALE N/A	RELEASED FOR CONSTRUCTION	
DATE 05/08/29	DATE 05/08/30	[Signature]	

**PROFESSIONAL'S SEAL**

S.F. BISWANGER  
REGISTERED PROFESSIONAL ENGINEER

CONSULTANT DRAWING NO. 07  
D265-177-07

**UMA | AECOM**

© 2005 UMA ENGINEERING LTD. ALL RIGHTS RESERVED.

**THE CITY OF WINNIPEG WATER AND WASTE DEPARTMENT**

**ALEXANDER/BANNATYNE CSO ABATEMENT UPGRADES**

**BANNATYNE AVENUE**

CONNECTION CHAMBER #3  
STRUCTURAL SECTIONS & DETAILS

BID OPPORTUNITY NO. 507-2005

SHEET 7 OF 8

CITY DRAWING NUMBER

LD-3177 0