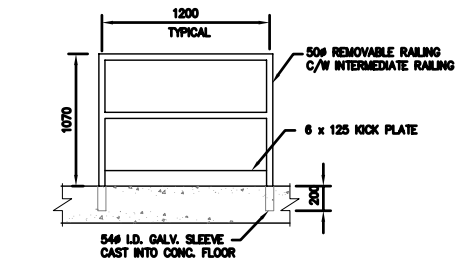


SITE TUBE MATERIALS LIST

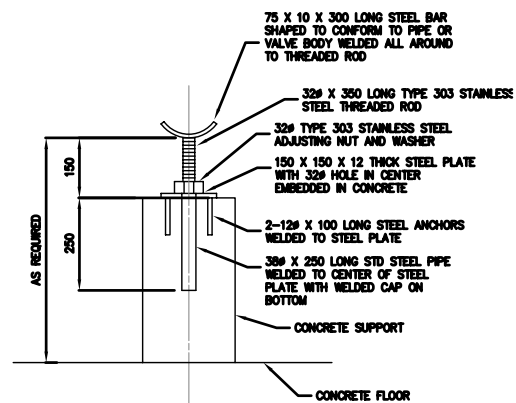
ITEM	DESCRIPTION	ENDS	QUANTITY
(A)	75Ø PIPE	PE X PE	AS REQ'D
(B)	50Ø CLEAR SCH 40 PVC PIPE	PE X PE	1
(C)	50Ø PIPE	PE X PE	AS REQ'D
(D)	75Ø PVC BALL VALVE	UNION (SOC X SOC)	2
(E)	50Ø PVC BALL VALVE	UNION (SOC X SOC)	1
(F)	50Ø DIFFERENTIAL PRESSURE CELL	FL	1
(G)	75 X 50 X 50 REDUCING TEE	SOC X SOC X SOC	1
(H)	75 X 50 REDUCER	SOC X SOC	2
(I)	50 X 50 X 50 CROSS WITH 50 X 20 REDUCER BRUSHINGS	SOC X SOC X SOC X SOC	1
(J)	50Ø UNION COUPLING	SOC X SOC	2
(K)	75 X 75 X 75 CROSS	SOC X SOC X SOC X SOC	1
(L)	75Ø MALE ADAPTER	MT X SOC	2
(M)	75Ø WATERTIGHT CAP	FT	2
(N)	19Ø WYE WITH INTEGRAL VALVES	FT X MT X MT	1
(O)	19Ø BRASS GATE VALVE	FT X FT	1
(P)	19Ø X 6Ø BRASS REDUCING NIPPLE	FT X MT	1
(Q)	50Ø PVC FLANGE	-	1

- NOTES:**
1. ALL PIPE AND FITTINGS TO BE ASTM D1784 SCH 40 PVC.
 2. ALL FITTINGS SOCKET END UNLESS OTHERWISE INDICATED.
 3. BV=BALL VALVE
 4. ITEMS SHOWN AS - TO BE SUPPLIED BY CITY.

SIGHT TUBE & D.P. CELL DETAIL
NTS

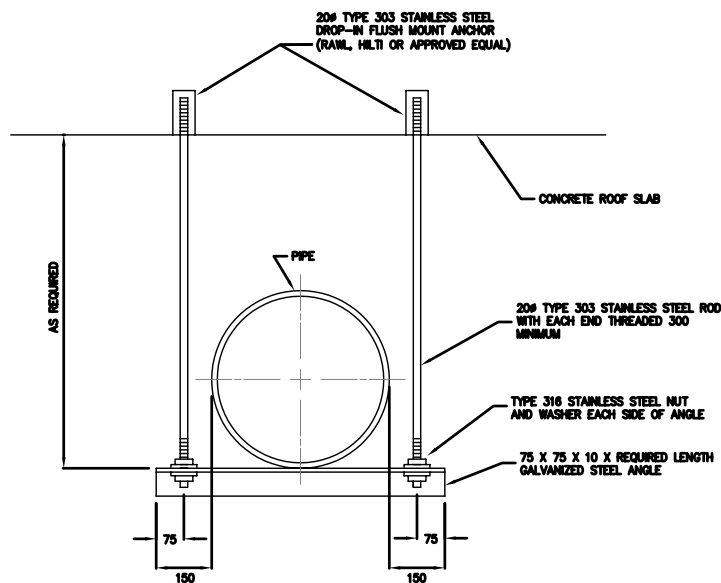


REMOVABLE RAILING DETAIL
1:30

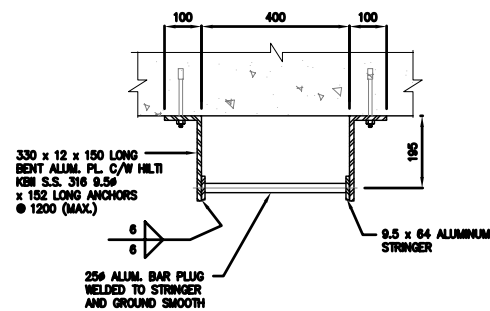


ADJUSTABLE PIPE SUPPORT
1:10

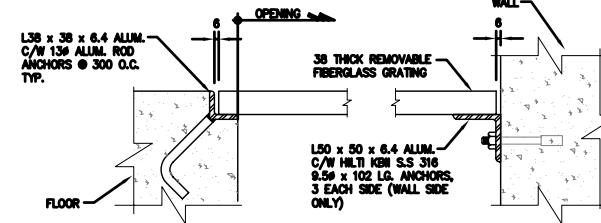
NOTE:
ALL STEEL TO BE GALVANIZED UNLESS OTHERWISE NOTED



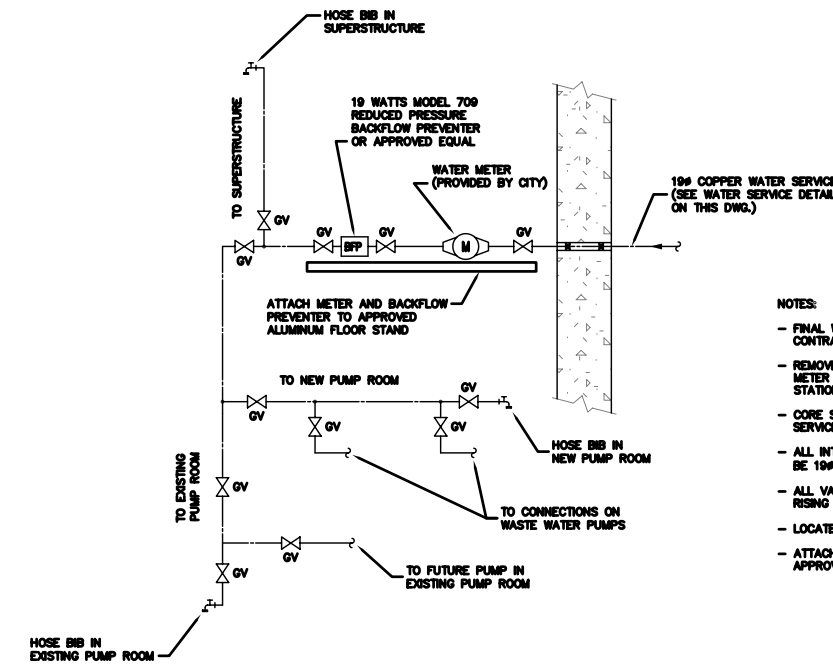
PIPE HANGER DETAIL
1:10



WET WELL LADDER
1:10

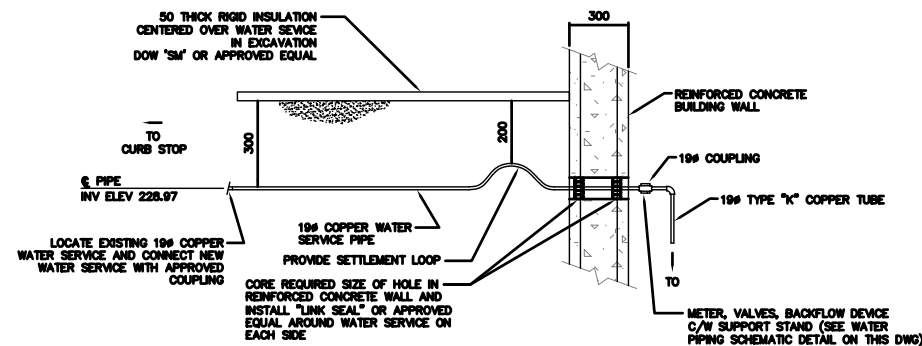


FIBREGLASS GRATING
1:5



WATER PIPING SCHEMATIC
NTS

- NOTES:**
- FINAL WATER PIPING LAYOUT TO BE DETERMINED BY CONTRACT ADMINISTRATOR ON SITE.
 - REMOVE EXIST WATER SERVICE PIPING, WATER METER AND BACKFLOW PREVENTER FROM EXISTING STATION.
 - CORE SMALLEST HOLE SIZE REQUIRED TO RUN WATER SERVICE THROUGH INTERIOR CONCRETE WALLS.
 - ALL INTERIOR WATER SERVICE PIPE AND FITTINGS TO BE 19Ø TYPE "K" COPPER TUBE.
 - ALL VALVES TO BE 19Ø BRASS GATE VALVES WITH RISING STEM AND HANDWHEEL.
 - LOCATE HOSE BIBS 1000 ABOVE FLOOR.
 - ATTACH COPPER WATER PIPING TO WALL WITH APPROVED ANCHORS.



WATER SERVICE DETAIL
NTS

METRIC
WHOLE NUMBERS INDICATE MILLIMETRES
DECIMALIZED NUMBERS INDICATE METRES

WARNING

- IF POWER EQUIPMENT OR EXPLOSIVES ARE TO BE USED FOR EXCAVATION ON THIS PROJECT THE CONTRACTOR LOCATION OF EXCAVATION.
- 1) NOTIFY THE GAS COMPANY OF THE PROPOSED LOCATION OF EXCAVATION.
 - 2) TAKE PRECAUTION TO AVOID DAMAGE TO GAS COMPANY INSTALLATIONS.
- SEE PROVINCIAL REGULATION 210/72 FOR DETAILS

B.M. ELEV.	FIELD BOOK #	CITY OF WINNIPEG WATER AND WASTE ENGINEERING DIVISION	ENGINEER'S SEAL	THE CITY OF WINNIPEG WATER AND WASTE DEPARTMENT
POSTED TO LBIS		DESIGNED BY TW	CHECKED BY TW	2005 MAGER DRIVE WASTEWATER PUMPING STATION EXPANSION MICELLANEOUS DETAILS
		DRAWN BY CJH	APPROVED BY KZ	SHEET 9 OF 12
		HOR. SCALE 1:50 VERTICAL	RELEASED FOR CONSTRUCTION	CITY DRAWING NUMBER 05557
NO. REVISIONS	DATE BY	DATE 2005 02 15	DATE	

ORIGINAL SIGNED BY **K.R. ZUREK** 05/02/10
BID OPPORTUNITY: 52-2005
FILENAME: MAGER_PS_DWG.DWG02.dwg
PLOT DATE: 2005 02 15