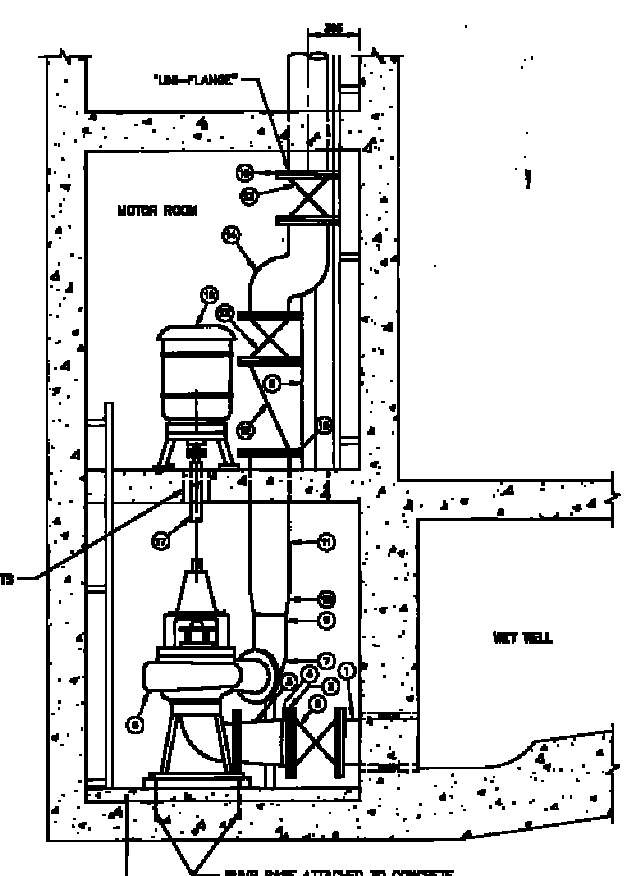
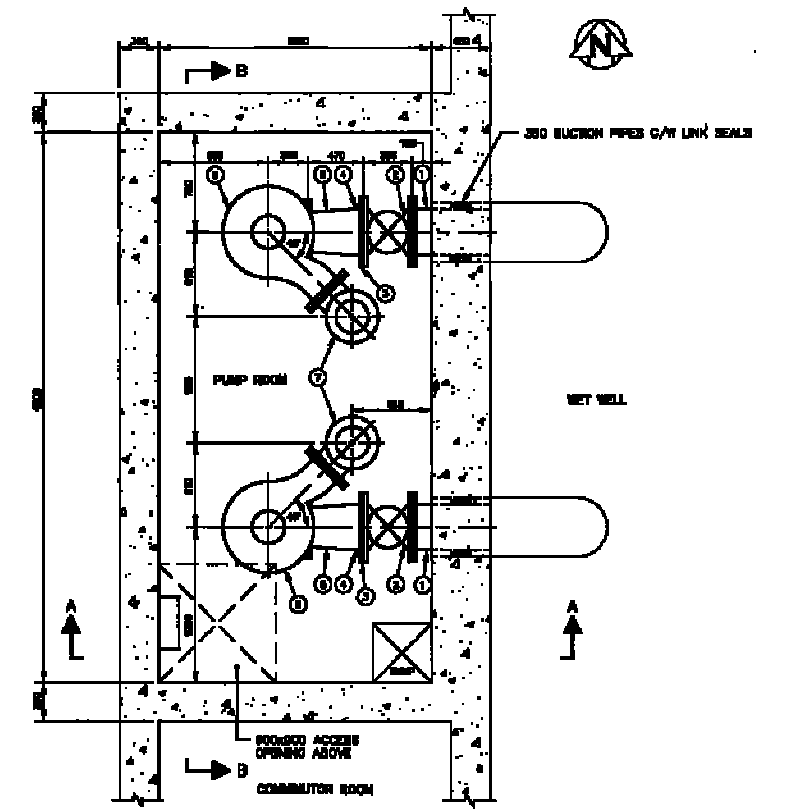


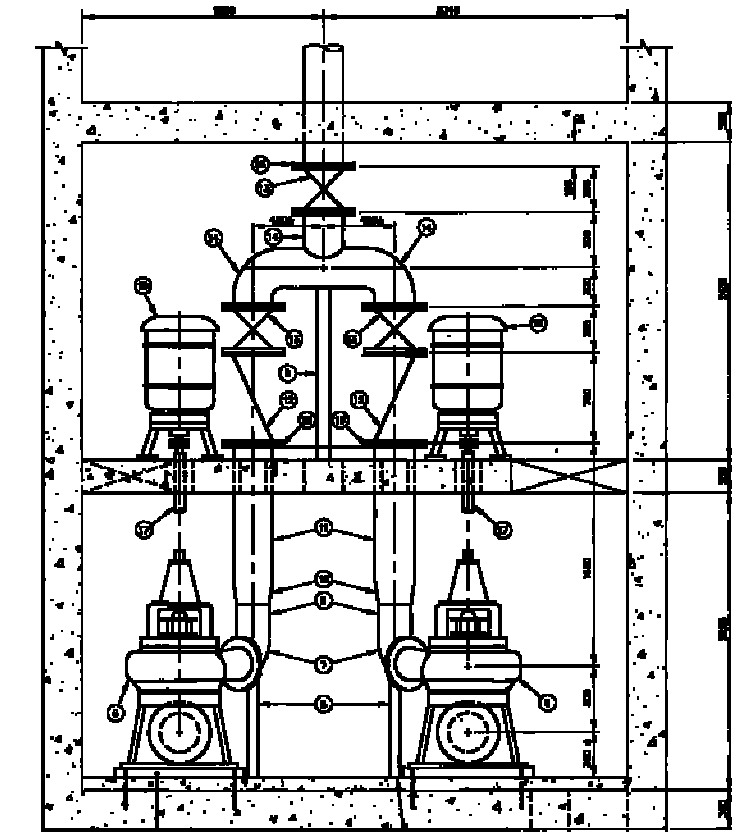
PLAN VIEW MOTOR ROOM
SCALE 1:25



SECTION A-A
SCALE 1:25



PLAN VIEW PUMP ROOM
SCALE 1:25



SECTION B-B
SCALE 1:25

ITEM	DESCRIPTION	ENDS	LENGTH	QUANTITY
1	250 & INLET PIPE C/W "LINK SEAL"	FL x PE	850	2
2	250 & GATE VALVE (ROUND STEEL)	FLANGED	375	2
3	250 & "LIN-FLANGE"	---	---	2
4	250 & SCH 80 STEEL FILLER PIPE	PE x PE	75	2
5	250 & 2 - 200 & SCH 80 STEEL FABRICATED REDUCER	FL x PE	350	2
6	WORTHINGTON-CORSEY 250 L/S (4700 Ltr/gpm) PUMP	FLANGED	---	2
7	250 & 90° BASK ELBOWS C/W 250, 251, & 252 (FABRICATED STEEL)	---	FL x PE	2
8	100 & SCH 80 STEEL PIPE SUPPORT C/W FLANGE ATTACHMENT AND 12 x 100 x 100 STEEL FLOOR PLATE	---	AS REQ'D	3
9	250 & SCH 80 STEEL FILLER PIPE	---	---	2
10	250 & 2 - 200 & SCH 80 STEEL REDUCER	ITEM #7	---	2
11	200 & FILLER PIPE	---	---	2
12	200 & 1/2" BALL CHECK VALVE	FLANGED	700	2
13	200 & GATE VALVE (NON-RISING STEM)	FLANGED	350	2
14	200 & 2 - 200 & 200 & SCH 80 STEEL FABRICATED 100 & C/W 200 & 80° ELBOWS	FL x PE, AS SHOWN	---	1
15	200 & "LIN-FLANGE"	---	---	3
16	75 HP, 1150 RPM, MANABRON ELECTRIC MOTORS	---	---	2
17	HOLLOW STEEL DRIVE SHAFT	---	---	2

- NOTES:
1. DIMENSIONS SHOWN FOR PIPING ARE FACE TO FACE AND DO NOT INCLUDE GASKET THICKNESS.
 2. GASKETS ARE 3 mm THICK, FULL FACED, CLOTH INSERTED RUBBER.
 3. ALL FLANGE NUTS AND BOLTS ARE HIGH STRENGTH STEEL.
 4. ALL PIPE IS SCHEDULE 80 STEEL.
 5. ALL FLANGED FITTINGS CONFORM TO ANS B16.1.
 6. ALL FLANGES ARE WELDED INSIDE AND OUT IN ACCORDANCE WITH ANS B16.5 CLASS D.
 7. ALL ANCHOR BOLTS ARE TYPE 316 SS KWC BOLT STUD ANCHOR.
 8. GROUTING AGENT IS ACRYL-GRAC.

FOR INFORMATION ONLY

AS-CONSTRUCTED
John E. Baker
 CONTRACT ADMINISTRATION DRAFTING & DESIGN SERVICES DATE
 WATER AND WASTE DEPARTMENT

METRIC
 WHOLE NUMBERS INDICATE MILLIMETERS
 DECIMALIZED NUMBERS INDICATE METERS

No. ENTERED IN LIBS CONSTRUCTION COMPLETION DATE: 97-10-01		CITY OF WINNIPEG WATER AND WASTE ENGINEERING DIVISION			THE CITY OF WINNIPEG WATER AND WASTE DEPARTMENT MAGER DRIVE WASTEWATER PUMPING STATION PUMP REPLACEMENT PLAN AND SECTIONS	CITY DRAWING NUMBER 4172
DESIGNED BY: TM CHECKED BY: JZ APPROVED BY:	DRAWN BY: TM DATE: DECEMBER 1995	PROJECT NO.: PD 97-41 SHEET NO.: 02 OF 03				