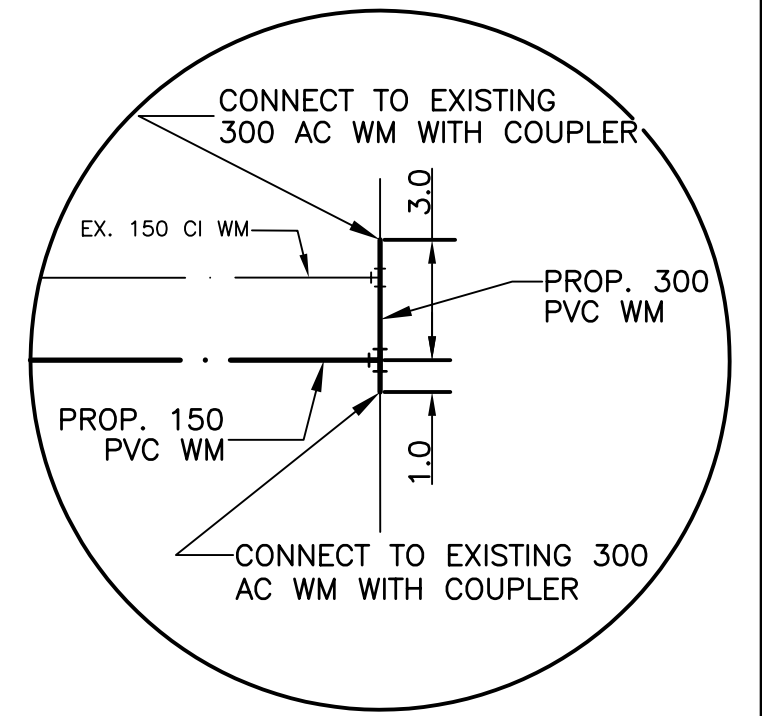
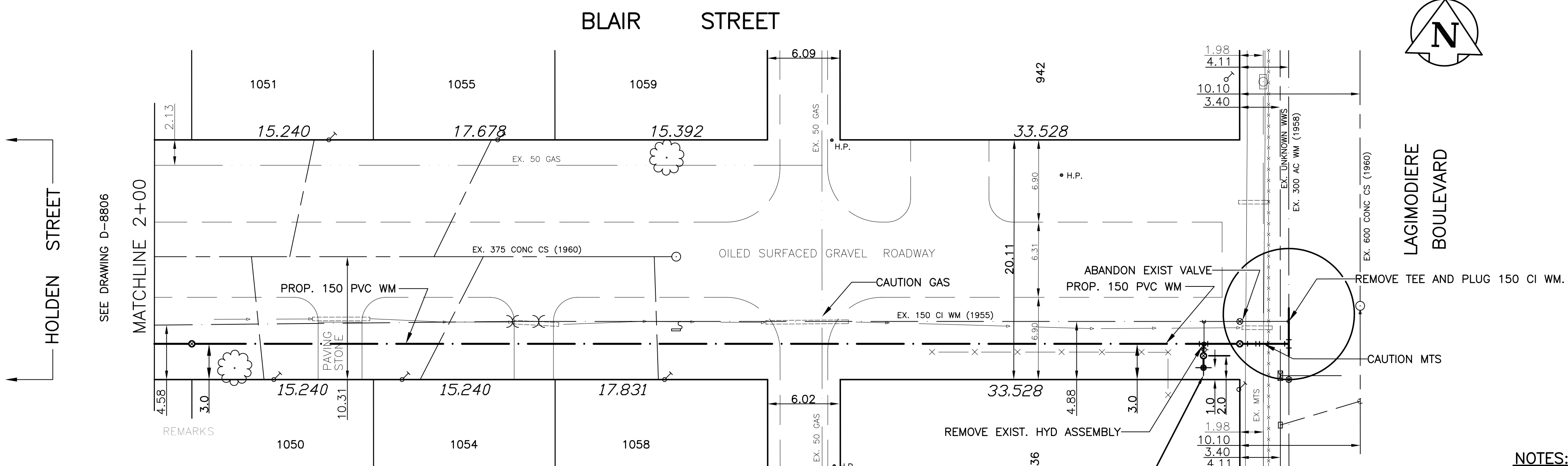


CHAINAGE ALONG THE SOUTH PROPERTY LINE OF BLAIR STREET



WATER SERVICE INFORMATION

ADDRESS	SIZE(mm) & TYPE	SIZE(mm) & TYPE	SHORT & LONG MEASUREMENT	CORP LOCATION
1050 BLAIR ST RESIDENTIAL	19 COPPER	19 COPPER	4.9 N/S/HL	
1051 BLAIR ST RESIDENTIAL	19 COPPER	19 COPPER	2.4 LR/HL	
1054 BLAIR ST RESIDENTIAL	19 COPPER	19 COPPER	25.9 FROM HYD	
1055 BLAIR ST RESIDENTIAL	19 COPPER	19 COPPER	1.5 LR/HL	
1058 BLAIR ST RESIDENTIAL	19 COPPER	19 COPPER	4.0 LR OR OF HSE	
1059 BLAIR ST RESIDENTIAL	19 COPPER	19 COPPER	37.8 FROM HYD	
936 LAGIMODIERE BLVD RESIDENTIAL	19 COPPER	19 COPPER	0.8 LR/HL	47.9
1059 BLAIR ST RESIDENTIAL	19 COPPER	19 COPPER	FROM HYD	49.7
942 LAGIMODIERE BLVD RESIDENTIAL	19 COPPER	19 COPPER	1.2 S/N	27.0

- NOTES:
- ALL GATE VALVES ARE TO BE COUNTER-CLOCKWISE TO OPEN WITH A BLACK OPERATING NUT.
 - WATERMAIN TO BE INSTALLED BY TRENCHLESS METHODS.
 - BACKFILL IS CLASS 5 WITHIN BOULEVARD AND CLASS 3 WHEN WITHIN PAVEMENT/SIDEWALK OR WHEN WITHIN 1.0m OF PAVEMENT OR SIDEWALK.
 - WATER SERVICES ARE 19mm UNLESS OTHERWISE NOTED.
 - MINIMUM COVER TO TOP OF WATERMAIN SHALL BE 2.4m.
 - LOCATION OF ALL SERVICES TO BE CONFIRMED IN FIELD.
 - EXPOSE EXISTING WATERMAIN TO CONFIRM DEPTH PRIOR TO CONSTRUCTION.
 - ALL LEAD SERVICES TO BE RENEWED.
 - SERVICES TO BE RENEWED SHALL BE REPLACED FROM WATERMAIN TO PROPERTY LINE. ALL OTHERS TO BE RECONNECTED.

APECM
Certificate of Authorization
SEG Engineering Inc.
No. 1432 Expiry: April 30, 2006

METRIC
WHOLE NUMBERS INDICATE MILLIMETRES
DECIMALIZED NUMBERS INDICATE METRES

EXISTING	LEGEND - PLAN	PROPOSED	EXISTING	LEGEND - PLAN	PROPOSED	EXISTING	LEGEND - PROFILE	PROPOSED
—	WATERMAIN	—	—	HYDRO	—	—	CENTER LINE	—
—	HYDRANT	—	—	M.T.S.	—	—	NORTH GUTTER LINE	—
—	VALVE	—	—	CONCRETE	—	—	SOUTH GUTTER LINE	—
—	LAND DRAINAGE SEWER	—	—	ASPHALT	—	—	WATERMAIN	—
—	WASTE WATER SEWER	—	—	PROPERTY LINE	—	—	VALVE	—
—	MANHOLE	—	—	SURVEY BAR	—	—	LAND DRAINAGE SEWER	—
—	CATCH BASIN	—	—	CURB STOP	—	—	WASTE WATER SEWER	—
—	CURB INLET	—	—	C.B. LEAD	—	—	JUNCTIONS	—
—	TRAFFIC SIGNAL	—	—	SIDEWALK	—	—	CULVERT	—
—	STEAM HT.	—	—	SIDEWALK RAMP	—	—	ANODE	—
—	GAS	—	—	ELEVATIONS	—	—	PLUG	—

LOCATION APPROVED
SUVY. U/G STRUCTURES DATE
NOTE:
LOCATION OF UNDERGROUND STRUCTURES AS SHOWN ARE BASED ON THE BEST INFORMATION AVAILABLE BUT NO GUARANTEE IS GIVEN THAT ALL EXISTING UTILITIES ARE SHOWN OR THAT THE GIVEN LOCATIONS ARE EXACT. CONFIRMATION OF EXISTENCE AND EXACT LOCATION OF ALL SERVICES MUST BE OBTAINED FROM THE INDIVIDUAL UTILITIES BEFORE PROCEEDING WITH CONSTRUCTION.

NO.	REVISIONS	DATE	BY
1	REVISED FOR 522-2005	05/08/17	DJ

SEG ENGINEERING INC.
200 TACHE AVENUE
WINNIPEG, MANITOBA
(204)-233-2113

DESIGNED BY: DJ
CHECKED BY: SM
DRAWN BY: RH
APPROVED BY: IMck
HOR. SCALE: 1:250
VERT. SCALE: 1:50
RELEASED FOR ORIGINAL CONSTRUCTION
SIGNED BY: K. ZUREK P. ENG
DATE: Aug. 18, 2005

PROFESSIONAL ENGINEER
I. G. MCKINNON
CONSULTANT DRAWING NO. 069-019-02

THE CITY OF WINNIPEG
WATER AND WASTE DEPARTMENT

2005 CAPITAL WORKS
WATERMAIN RENEWALS
BLAIR STREET
100m EAST OF HOLDEN STREET
TO LAGIMODIERE BOULEVARD

CITY DRAWING NO. SHEET 2 OF 2
D-8807