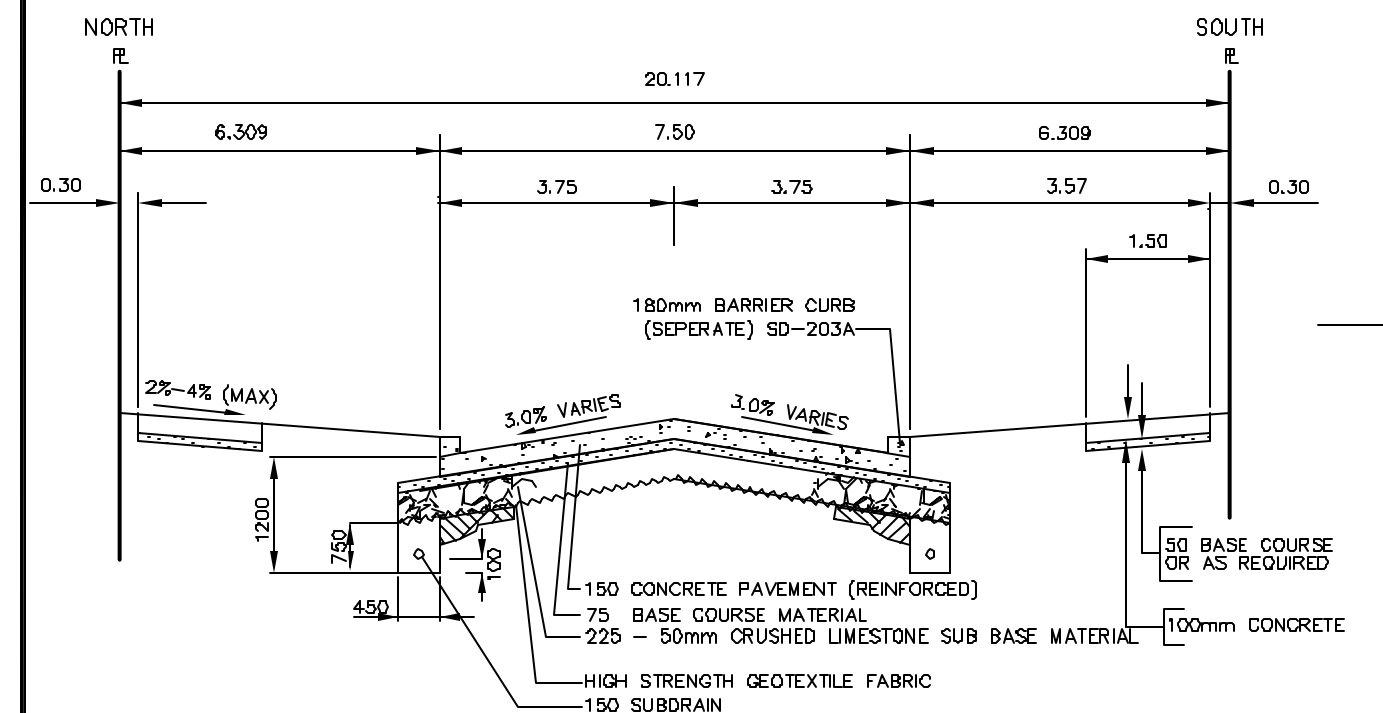


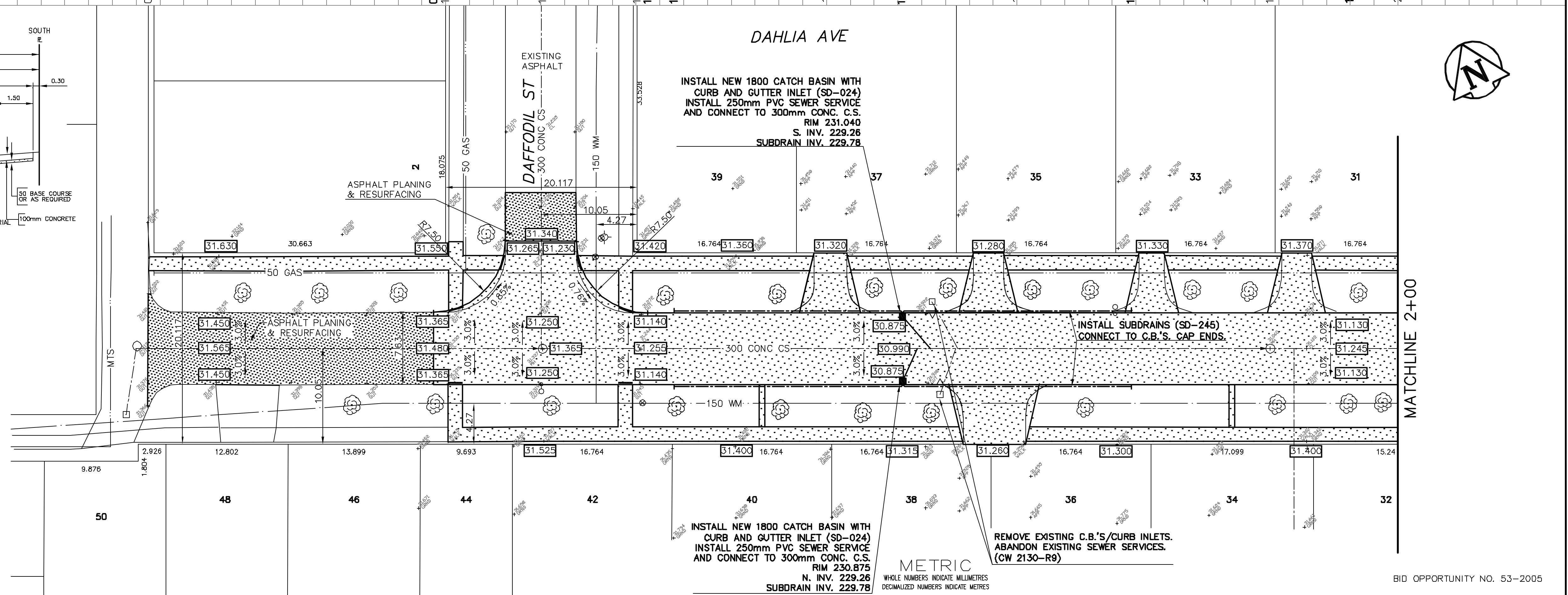
TYPICAL RECONSTRUCTION CROSS-SECTION



- WARNING**
 IF POWER EQUIPMENT OR EXPLOSIVES ARE TO BE USED FOR EXCAVATION ON THIS PROJECT THE CONTRACTOR MUST:
 1) OBTAIN CLEARANCE FROM THE PRIOR TO EXCAVATION.
 2) TAKE PRECAUTION TO AVOID DAMAGE TO GAS UTILITY INSTALLATIONS.
- SEE PROVINCIAL REGULATION 210/72 FOR DETAILS
- CONSTRUCTION NOTES**
 1) CURB REPLACEMENT AS DIRECTED BY THE CONTRACT ADMINISTRATOR
 2) ALL STREET RADIUS CURB UNDER 15M RADIUS SHALL BE REPLACED AS MODIFIED OR AS DIRECTED BY THE CONTRACT ADMINISTRATOR
 3) PAVEMENT REPAIRS SHOWN ARE ONLY A REPRESENTATIVE SAMPLE OF THE TENDERED QUANTITIES
 4) ASPHALT TIE-INS TO BE DETERMINED IN THE FIELD BY THE CONTRACT ADMINISTRATOR.
 5) SIDEWALK REPLACEMENT AS DIRECTED BY THE CONTRACT ADMINISTRATOR
 6) BOULEVARD REPLACEMENT AS DIRECTED BY THE CONTRACT ADMINISTRATOR.

CONSTRUCT NEW APPROACHES (SD-235) WITH 40mm LIP CURB (SD-202B) AS DIRECTED BY CONTRACT ADMINISTRATOR. TYPICAL.

ALL CHAINAGES ARE MEASURED ALONG THE CENTRE LINE OF DAHLIA AVENUE



150 WM	WATERMAIN	150 WM	HYDRO MTS	150 WM	WATERMAIN	150 WM	LOCATION APPROVED
300 LDS	LAND DRAINAGE SEWER	300 LDS	CONCRETE	300 LDS	SEWER	300 LDS	UNDERGROUND STRUCTURES
250 CS	COMBINED SEWER	250 CS	LIMIT OF ASPHALT CURB RENEWAL				
□	MANHOLE	●	ASPHALT				
○	CATCH BASIN	▲	ELEVATIONS				
△	CURB INLET	◆	PROPERTY LINE				
☆	WOOD POLES	⊕	SURVEY BAR				
○	LAMP STANDARD	⊙	CURB STOP				
	GAS	—	RAMP CURB				
EXISTING	LEGEND - PLAN	PROPOSED	EXISTING	LEGEND - PLAN	PROPOSED	EXISTING	LEGEND - PROFILE

LOCATION APPROVED
 UNDERGROUND STRUCTURES

NO. REVISIONS

DATE BY

B.M. ELEV. GBM 25-001 231.460

ENGINEERING DIVISION
 TECHNOLOGY SERVICES BRANCH
 106 - 1155 PACIFIC AVE

DESIGNED BY C.T. CHECKED BY D.K.
 DRAWN BY C.T. APPROVED BY T.M.C.

HOR. SCALE: 1 : 250
 VERTICAL: 1 : 10

DATE 2005/02/23

ENGINEER'S SEAL
 PROVINCE OF MANITOBA
 L.P. DEANE
 REGISTERED ENGINEER

THE CITY OF WINNIPEG
 PUBLIC WORKS DEPARTMENT

DAHLIA AVENUE
 FROM WEST LIMIT TO SINCLAIR STREET
 RECONSTRUCTION AND RELATED WORKS
 FROM STA. 0+68.8 TO STA. 2+00

CITY DRAWING NUMBER SE-05-15
 SHEET 1 OF 3
 1

BID OPPORTUNITY NO. 53-2005