

**CONSTRUCTION NOTES**

- 1) CURB REPLACEMENT AS DIRECTED BY THE CONTRACT ADMINISTRATOR
- 2) ALL STREET RADIUS CURB UNDER 15M RADIUS SHALL BE REPLACED AS MODIFIED OR AS DIRECTED BY THE CONTRACT ADMINISTRATOR
- 3) PAVEMENT REPAIRS SHOWN ARE ONLY A REPRESENTATIVE SAMPLE OF THE TENDERED QUANTITIES
- 4) ASPHALT TIE-INS TO BE DETERMINED IN THE FIELD BY THE CONTRACT ADMINISTRATOR
- 5) SIDEWALK REPLACEMENT AS DIRECTED BY THE CONTRACT ADMINISTRATOR
- 6) BOULEVARD REPLACEMENT AS DIRECTED BY THE CONTRACT ADMINISTRATOR

**WARNING**

IF POWER EQUIPMENT OR EXPLOSIVES ARE TO BE USED FOR EXCAVATION ON THIS PROJECT THE CONTRACTOR MUST:

- 1) OBTAIN CLEARANCE FROM THE GAS UTILITY PRIOR TO EXCAVATION.
- 2) TAKE PRECAUTION TO AVOID DAMAGE TO GAS UTILITY INSTALLATIONS.

SEE PROVINCIAL REGULATION 210/72 FOR DETAILS

150 WM	WATERMAIN	150 WM	HYDRO	150 WM	WATERMAIN	150 WM
⊕	HYDRANT	⊕	MTS	⊕	SEWER	⊕
⊕	VALVE	⊕	CONCRETE	⊕		⊕
300 LDS	LAND DRAINAGE SEWER	300 LDS	LIMIT OF ASPHALT	300 LDS		300 LDS
250 CS	COMBINED SEWER	250 CS	CURB RENEWAL	250 CS		250 CS
○	MANHOLE	●	ASPHALT	○		○
□	CATCH BASIN	■	ELEVATIONS	□	SOUTH/EAST WALK	□
△	CURB INLET	▲	PROPERTY LINE	△	NORTH/WEST WALK	△
☆	WOOD POLES	⊕	SURVEY BAR	☆	⊕ PROFILE	☆
○	LAMP STANDARD	⊕	CURB STOP	○	SOUTH/EAST GUTTER	○
○	GAS	⊕	RAMP CURB	○	NORTH/WEST GUTTER	○
EXISTING	LEGEND - PLAN	PROPOSED	EXISTING	LEGEND - PLAN	PROPOSED	EXISTING

**LOCATION APPROVED**  
UNDERGROUND STRUCTURES

DATE

NOTE:  
LOCATION OF UNDERGROUND STRUCTURES AS SHOWN ARE BASED ON THE BEST INFORMATION AVAILABLE. BUT NO GUARANTEE IS GIVEN THAT ALL EXISTING UTILITIES ARE SHOWN OR THAT THE GIVEN LOCATIONS ARE EXACT. CONFIRMATION OF EXISTENCE AND EXACT LOCATION OF ALL SERVICES MUST BE OBTAINED FROM THE INDIVIDUAL UTILITIES BEFORE PROCEEDING WITH CONSTRUCTION.

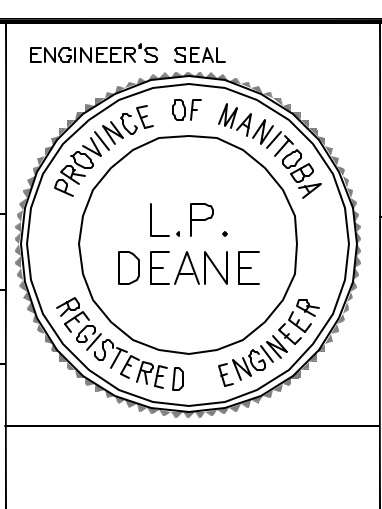
B.W. ELEV.	GBM 25-014	231.773
NO.	REVISIONS	DATE

ENGINEERING DIVISION  
TECHNOLOGY SERVICES BRANCH  
106 - 1155 PACIFIC AVE

DESIGNED BY: C.T.  
CHECKED BY: D.K.  
DRAWN BY: C.T.  
APPROVED BY: T.M.C.

HOR. SCALE: 1 : 250  
VERTICAL: 1 : 10

DATE: 2005/02/15



**THE CITY OF WINNIPEG**  
PUBLIC WORKS DEPARTMENT

**ANDREWS STREET**  
FROM BURROWS AVENUE TO ALFRED AVENUE  
RECONSTRUCTION AND RELATED WORKS  
FROM STA. 0+95.60 TO STA. 1+66.60

CITY DRAWING NUMBER: SE-05-18  
SHEET 1 OF 1

BID OPPORTUNITY NO. 53-2005