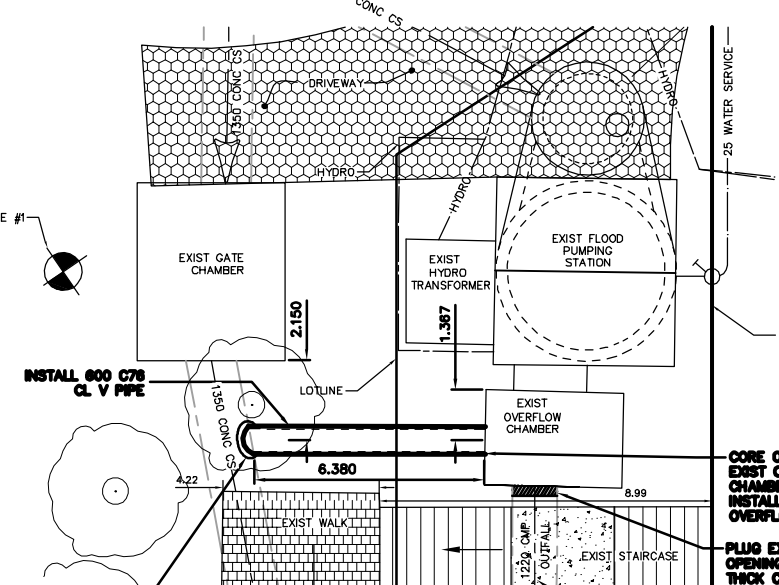
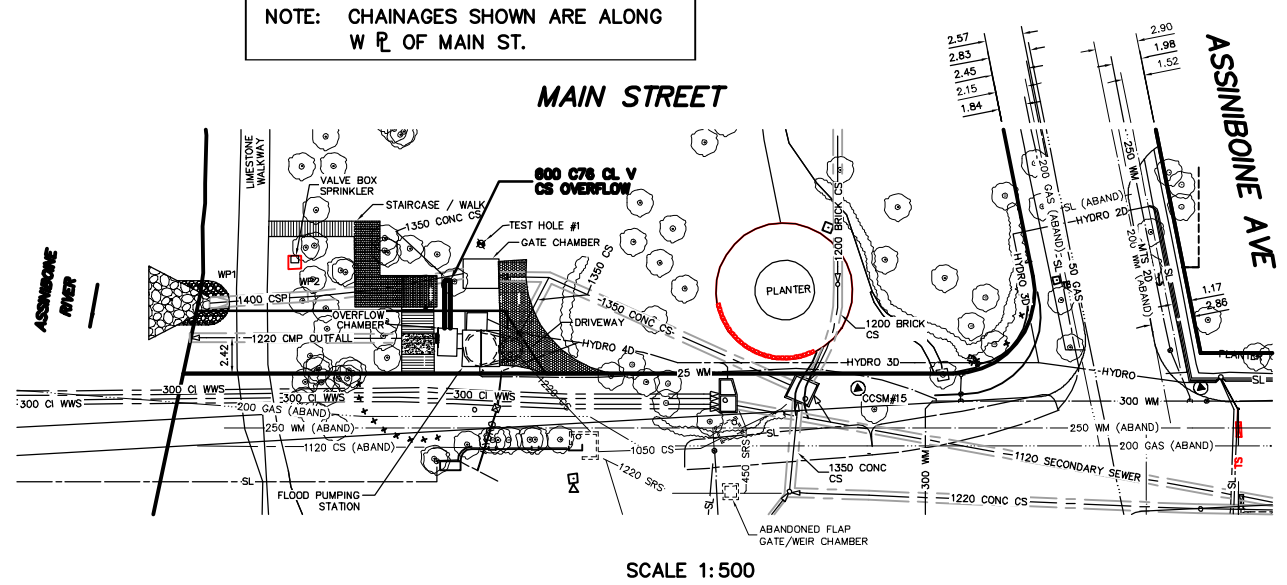


NOTE: CHAINAGES SHOWN ARE ALONG W R OF MAIN ST.

NOTE: CHAINAGES SHOWN ARE ALONG Q OF NEW 600 CS



**CONSTRUCTION NOTES:**

- RESTORE ALL DISTURBED AREAS GRASSED WITH IMPORTED TOP SOIL AND 300 IN ACCORDANCE WITH CWS370.
- PROVIDE TEMPORARY PUMPING OF FLOW IN COMBINED SEWER AS-REQUIRED DURING CONSTRUCTION.
- PREVENT EXCAVATED MATERIAL, BACKFILL MATERIAL AND SOIL/WATER SLURRY FROM ENTERING OUTFALL TO RIVER.
- DO NOT REMOVE EXISTING TREES. WITHOUT CONTRACT ADMINISTRATORS APPROVAL. PROVIDE TREE PROTECTION IN ACCORDANCE WITH SPECIFICATIONS.
- CONTRACTOR SHALL BE RESPONSIBLE TO CONFIRM LOCATION AND ELEVATION OF EXISTING OUTFALL BEFORE CONSTRUCTION BEGINS.
- RESTORE ALL DAMAGED OR DISTURBED INTERLOCKING PAVING STONES TO MATCH EXISTING.

**WARNING**

IF POWER EQUIPMENT OR EXPLOSIVES ARE TO BE USED FOR EXCAVATION ON THIS PROJECT THE CONTRACTOR

- NOTIFY THE GAS COMPANY OF THE PROPOSED LOCATION OF EXCAVATION.
- TAKE PRECAUTION TO AVOID DAMAGE TO GAS COMPANY INSTALLATIONS.

SEE PROVINCIAL REGULATION 210/72 FOR DETAILS

WHOLE NUMBERS INDICATE MILLIMETRES  
DECIMALIZED NUMBERS INDICATE METRES

200 WM		200 WM		SL, HYDRO		150 WM		WATERMAIN		150 WM		LOCATION APPROVED UNDERGROUND STRUCTURES	
	WATERMAIN HYDRANT		WATERMAIN VALVE		TRAFFIC SIGNALS		GAS		LAND DRAINAGE SEWER		WASTEWATER SEWER		SURVEY BAR
	525 LDS LAND DRAINAGE SEWER		375 WWS WASTEWATER SEWER		FENCE		POLE - HYDRO, MTS		GROUND ABOVE PIPE		Q DITCH (NORTH & WEST)		Q DITCH (SOUTH & EAST)
	MANHOLE		CATCH BASIN		CURB INLET		JUNCTIONS		CULVERT		GUTTER (NORTH & WEST)		GUTTER (SOUTH & EAST)
	EXISTING		PROPOSED		EXISTING		PROPOSED		EXISTING		PROPOSED		EXISTING

NOTE: LOCATION OF UNDERGROUND STRUCTURES AS SHOWN ARE BASED ON THE BEST INFORMATION AVAILABLE BUT NO GUARANTEE IS GIVEN THAT ALL EXISTING UTILITIES ARE SHOWN OR THAT THE GIVEN LOCATIONS ARE EXACT. CONFIRMATION OF EXISTENCE AND EXACT LOCATION OF ALL SERVICES MUST BE OBTAINED FROM THE INDIVIDUAL UTILITIES BEFORE PROCEEDING WITH CONSTRUCTION.

B.M. ELEV.	FIELD BOOK #
POSTED TO LBS	
NO. REVISIONS	DATE BY

**CITY OF WINNIPEG WATER AND WASTE ENGINEERING DIVISION**

DESIGNED BY: DGS  
CHECKED BY: TW  
DRAWN BY: C.JH/WKT  
APPROVED BY: KZ  
HOR. SCALE AS SHOWN  
VERTICAL 1:50  
DATE: 2006 08 30

ENGINEER'S SEAL  
ORIGINAL SIGNED BY: K.R. ZUREK  
DATE: 06/08/30

**THE CITY OF WINNIPEG WATER AND WASTE DEPARTMENT**

2006 OUTFALL GATE CHAMBER UPGRADES  
**ASSINIBOINE AVENUE**  
COMBINED SEWER OUTFALL GATE CHAMBER  
600 COMBINED SEWER OVERFLOW INSTALLATION

SHEET 6 OF 6  
CITY DRAWING NUMBER: LD-3394