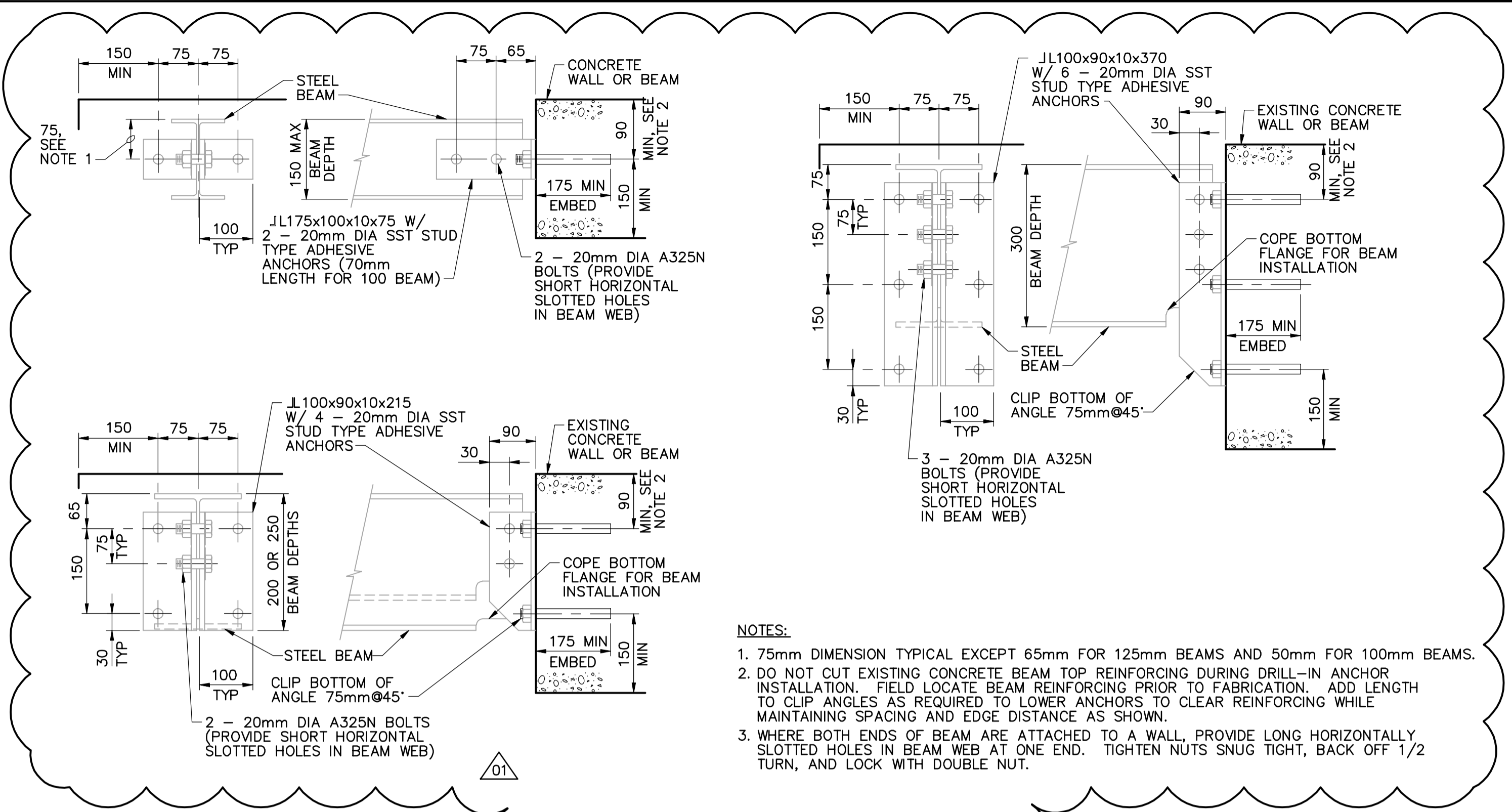
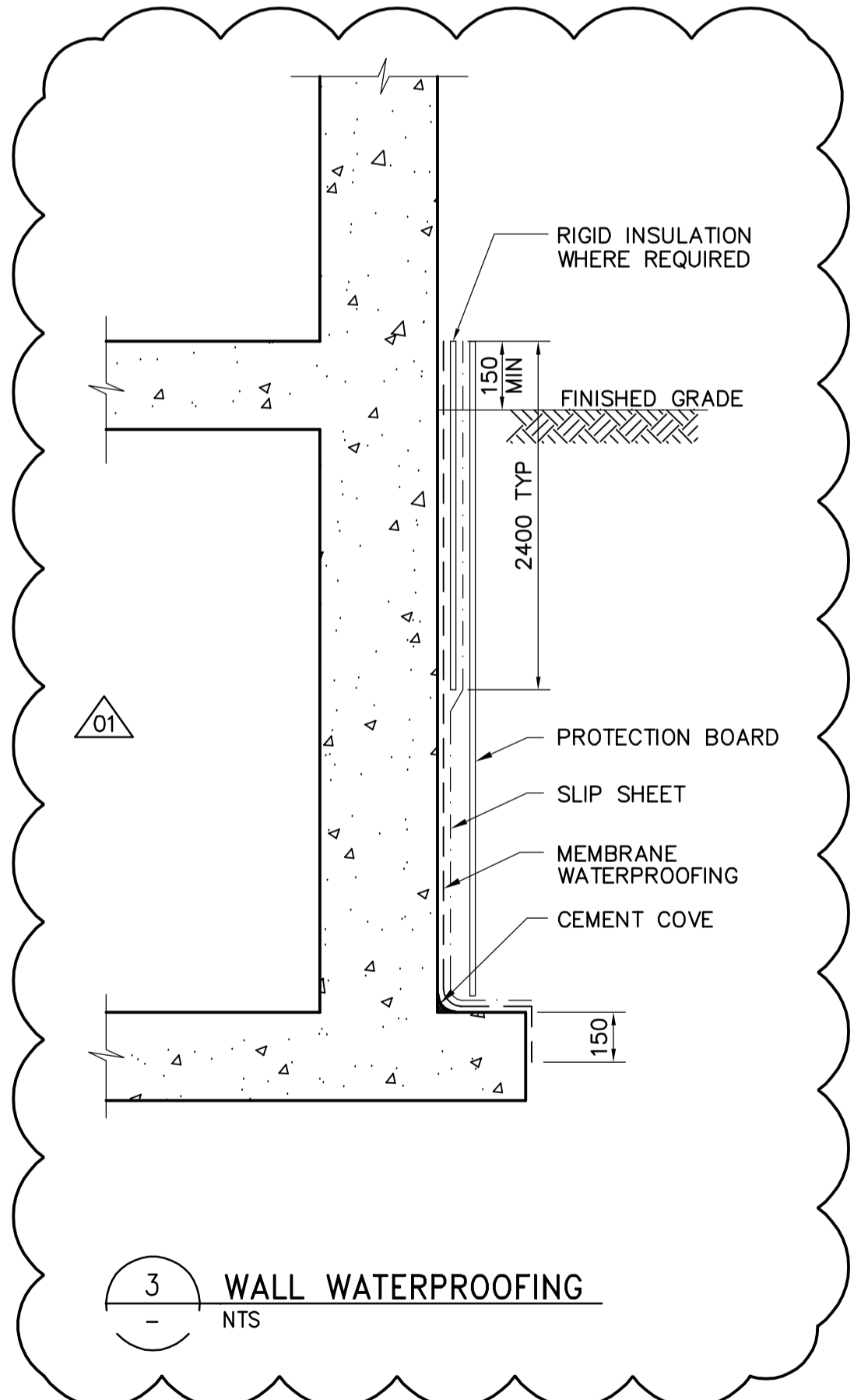


NOTES:
 PROVIDE EMBED PLATES IN ALL PERPENDICULAR CONCRETE BEAMS INTERSECTING MONORAIL OR CRANE RAIL.

MONORAIL CONNECTION



NOTES:
 1. 75mm DIMENSION TYPICAL EXCEPT 65mm FOR 125mm BEAMS AND 50mm FOR 100mm BEAMS.
 2. DO NOT CUT EXISTING CONCRETE BEAM TOP REINFORCING DURING DRILL-IN ANCHOR INSTALLATION. FIELD LOCATE BEAM REINFORCING PRIOR TO FABRICATION. ADD LENGTH TO CLIP ANGLES AS REQUIRED TO LOWER ANCHORS TO CLEAR REINFORCING WHILE MAINTAINING SPACING AND EDGE DISTANCE AS SHOWN.
 3. WHERE BOTH ENDS OF BEAM ARE ATTACHED TO A WALL, PROVIDE LONG HORIZONTALLY SLOTTED HOLES IN BEAM WEB AT ONE END. TIGHTEN NUTS SNUG TIGHT, BACK OFF 1/2 TURN, AND LOCK WITH DOUBLE NUT.



<p>Certificate of Authorization CH2M HILL Canada Ltd. No. 1441 Expiry: April 30, 2006</p>	B.M. ELEV.	<p>Frederickson Cooper ARCHITECTS</p>	<p>A Terra International Ltd. Company</p>	ENGINEER'S SEAL	<p>THE CITY OF WINNIPEG WATER AND WASTE DEPARTMENT ENGINEERING DIVISION</p>			
				DESIGNED BY DK		CHECKED BY AP	ORIGINAL SIGNED BY D. KRUGER	
				DRAWN BY PM		APPROVED BY DJT	2006/02/06	
				SCALE: NTS		RELEASED FOR CONSTRUCTION BY: R. SOROKOWSKI	CONSULTANT DRAWING NO. WB-S0461	
	NO. REVISIONS	DATE BY	DATE	2005/08/31	DATE	2006/02/08	WATER TREATMENT PLANT FOUNDATIONS AND CONCRETE STRUCTURES STRUCTURAL STANDARD DETAILS	CITY FILE NUMBER SHEET OF CITY DRAWING NUMBER 1-060B-A-80461-001-0D