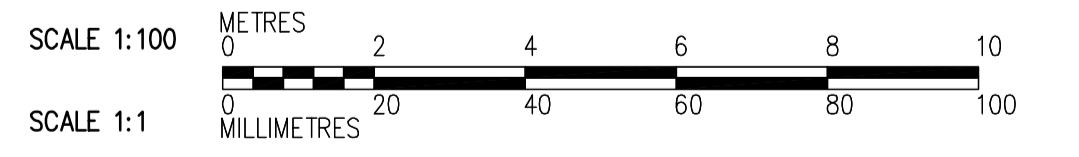
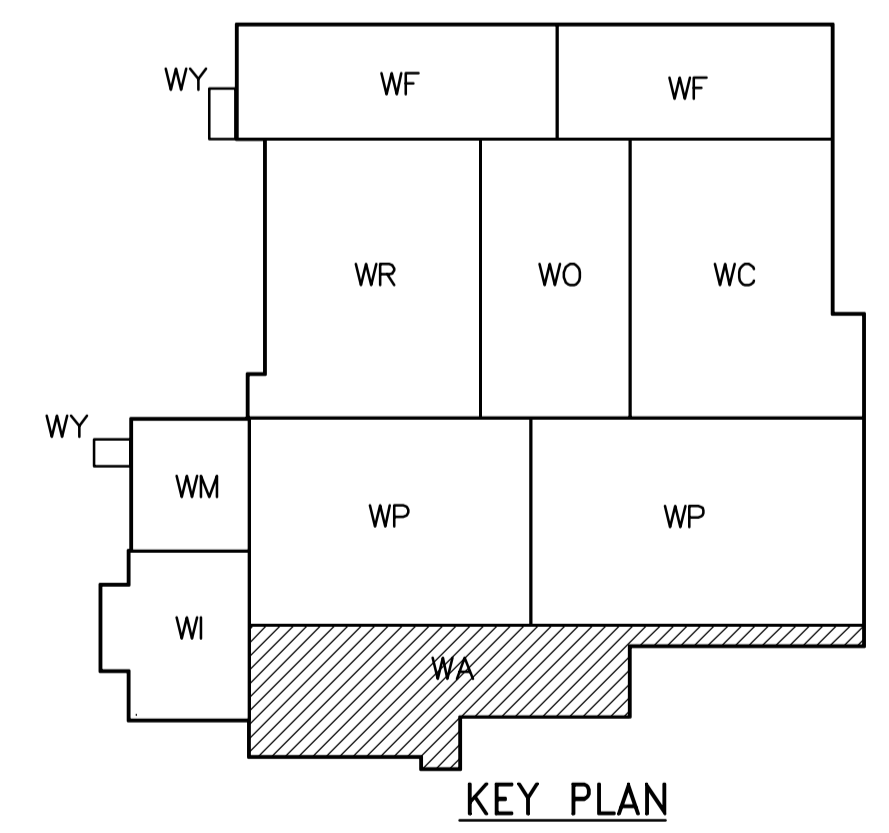
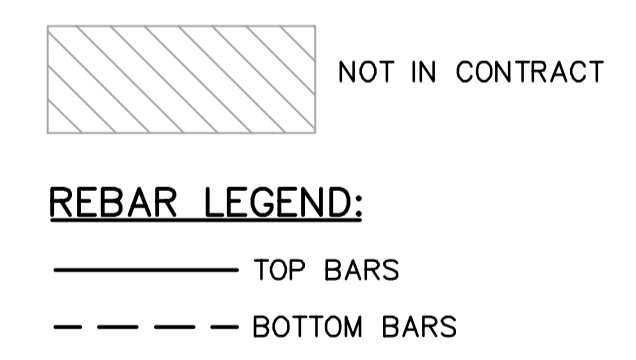


- NOTES:**
- DESIGN LIVE LOAD IS 14.4 kPa, EXCEPT WHERE SNOW LOAD IS SHOWN.
 - SUPERIMPOSED DEAD LOAD IS 1.0kPa.
 - FOR COLUMN AND BEAM SCHEDULE SEE DWG WA-S0515.
 - PARAPET WALL TO BE PROVIDED AT ALL EXTERIOR WALLS AND ALONG ALL EXPANSION JOINTS. FOR DETAIL SEE **4** WB-S0464.



ROOF FRAMING PLAN
1:100

| | | | | | | | |
|--|----------------|---|---------------------------------------|--------------------------------------|------------------------------|--|------------------|
| Certificate of Authorization CH2M HILL Canada Ltd. No. 1441 Expiry: April 30, 2006 | B.M. ELEV. | | Frederickson Cooper ARCHITECTS | A Neo International Ltd. Company | ENGINEER'S SEAL | THE CITY OF WINNIPEG WATER AND WASTE DEPARTMENT ENGINEERING DIVISION WATER TREATMENT PLANT ADMINISTRATION FOUNDATIONS AND CONCRETE STRUCTURES STRUCTURAL ADMINISTRATION AREA ROOF FRAMING PLAN | CITY FILE NUMBER |
| | DESIGNED BY MC | CHECKED BY AP | | | ORIGINAL SIGNED BY D. KRUGER | | SHEET OF |
| | DRAWN BY RL | APPROVED BY DJT | 2006/02/06 | CITY DRAWING NUMBER | | | |
| | SCALE: 1:100 | RELEASED FOR CONSTRUCTION BY: R. SOROKOWSKI | CONSULTANT DRAWING NO. WA-S0141 | 1-0601A-A-001-001-000 | | | |
| 00 ISSUED FOR TENDER | 2006/02/03 MC | DATE 2005/07/04 | DATE 2006/02/08 | | | | |