

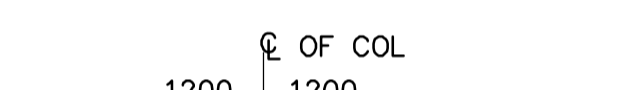
**TYPICAL 2 PILES DETAIL**  
1:75



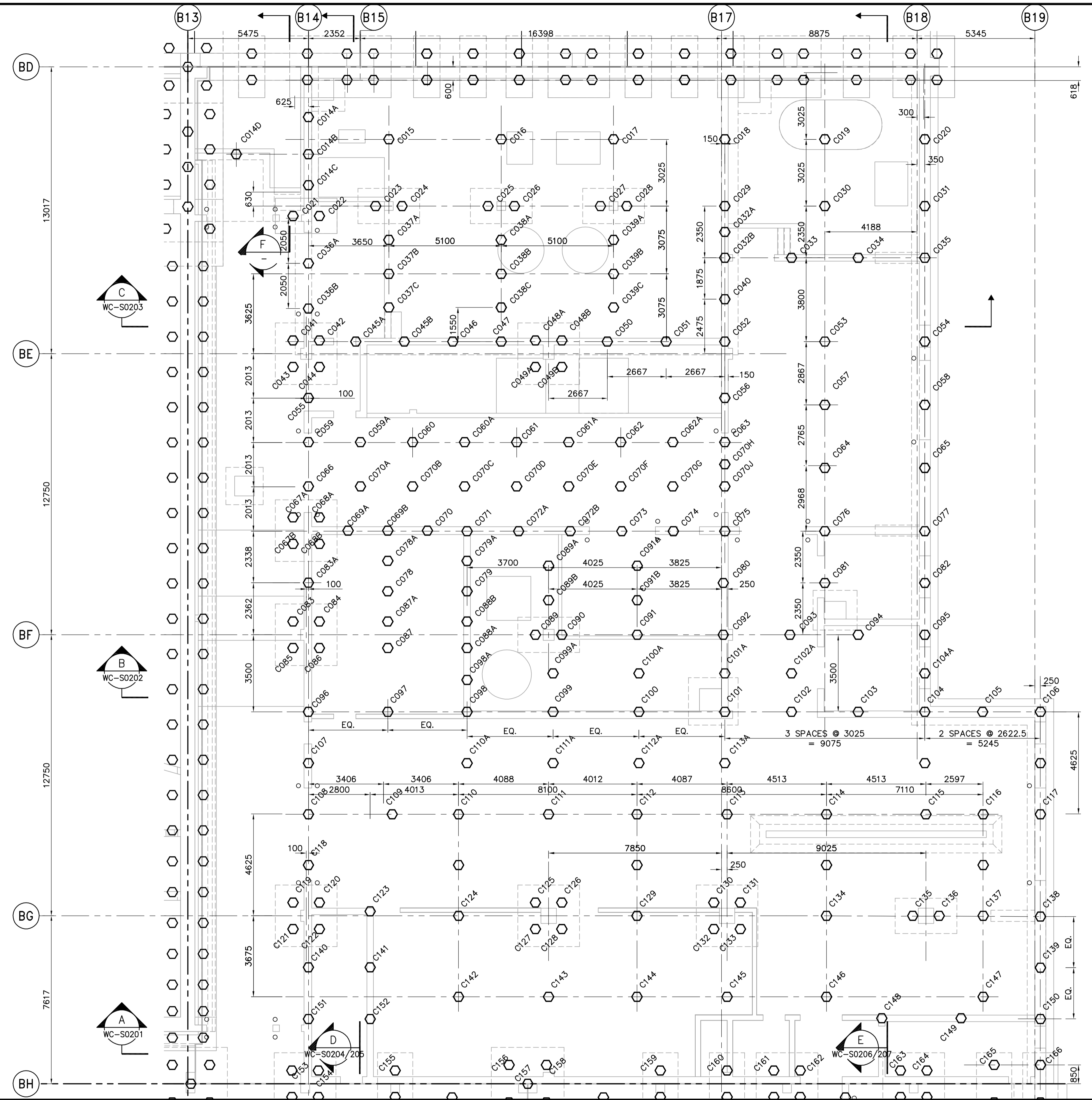
**TYPICAL 4 PILES DETAIL**  
1:75



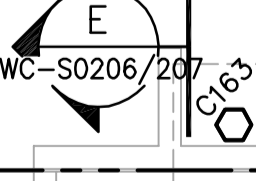
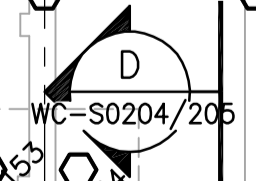
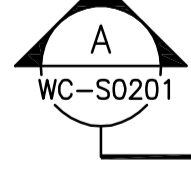
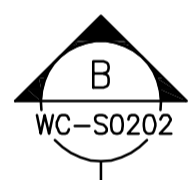
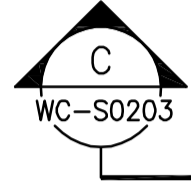
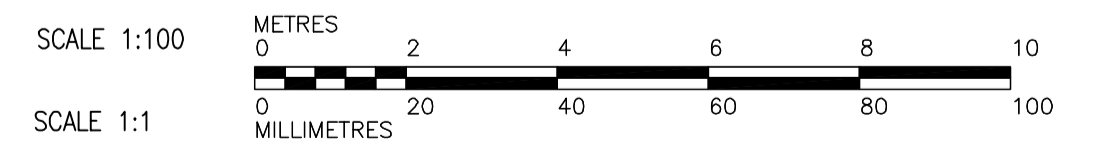
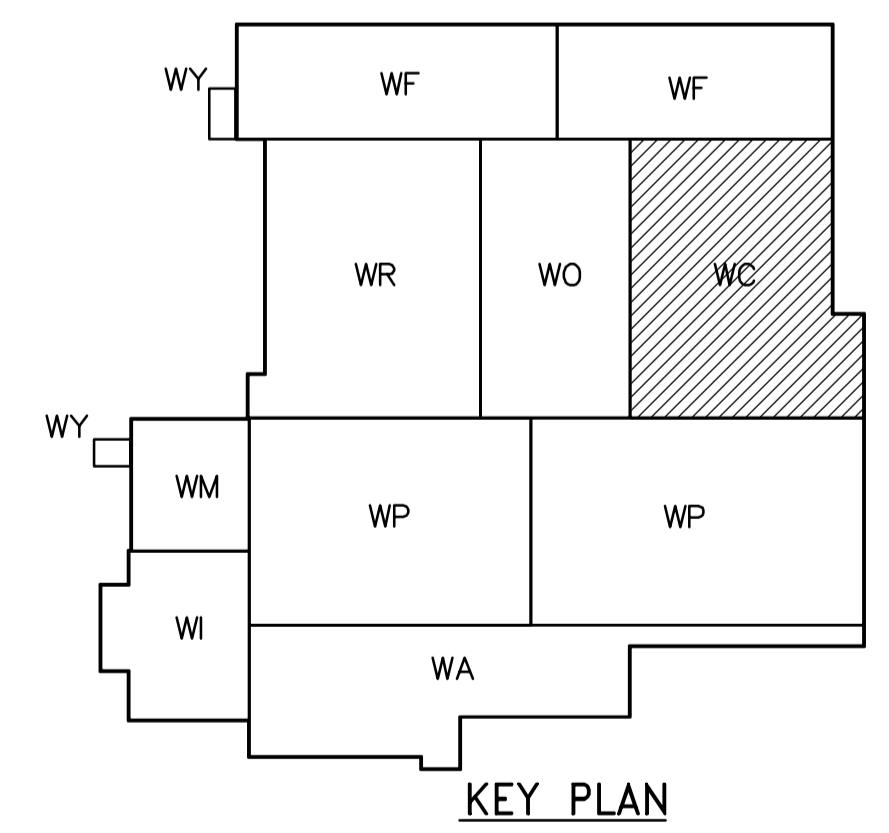
**TYPICAL 6 PILES DETAIL**  
1:75



**TYPICAL 8 PILES DETAIL**  
1:75



- NOTES:**
- FOR GENERAL NOTES SEE DWG WM-S9002.
  - NUMBERING OF PILES DOES NOT INDICATE SEQUENCE OF INSTALLATION.
  - ALL PILES TO BE 400Ø HEX.
  - NOT IN CONTRACT
  - PILES WITHOUT NUMBERS ARE CALLED UP ON THE DRAWINGS FOR THE ADJACENT AREA.
  - FOR TYPICAL CAST IN-PLACE PILE EXTENSION AND CUT-OFF DETAILS SEE WB-S0460
  - SEE PILE SCHEDULE ON DWG WF-S0505, WF-S0506, WF-S0507.



**APECA**  
Certificate of Authorization  
CH2M HILL Canada Ltd.  
No. 1441 Expiry: April 30, 2006

B.M. ELEV.			
DESIGNED BY	EL	CHECKED BY	AP
DRAWN BY	DJ	APPROVED BY	DJT
SCALE:	1:100	RELEASED FOR CONSTRUCTION BY:	R. SOROKOWSKI
NO. REVISIONS		DATE	2005/07/08
00	ISSUED FOR TENDER	DATE	2006/02/03
		DATE	2006/02/08

**CH2MHILL**  
Frederickson Cooper ARCHITECTS

**EarthTech**  
A Geo International Ltd. Company

DESIGNED BY: EL  
DRAWN BY: DJ  
SCALE: 1:100

CHECKED BY: AP  
APPROVED BY: DJT  
RELEASED FOR CONSTRUCTION BY: R. SOROKOWSKI  
DATE: 2006/02/08

ENGINEER'S SEAL  
ORIGINAL SIGNED BY: D. KRUGER  
2006/02/06  
CONSULTANT DRAWING NO.: WC-F0105

**THE CITY OF WINNIPEG**  
WATER AND WASTE DEPARTMENT  
ENGINEERING DIVISION

WATER TREATMENT PLANT  
CHEMICAL FEED SYSTEMS  
FOUNDATIONS AND CONCRETE STRUCTURES

STRUCTURAL  
CHEMICAL AREA  
PILING PLAN

CITY FILE NUMBER  
SHEET OF  
CITY DRAWING NUMBER  
**1-060C-B-F0105-001-00D**