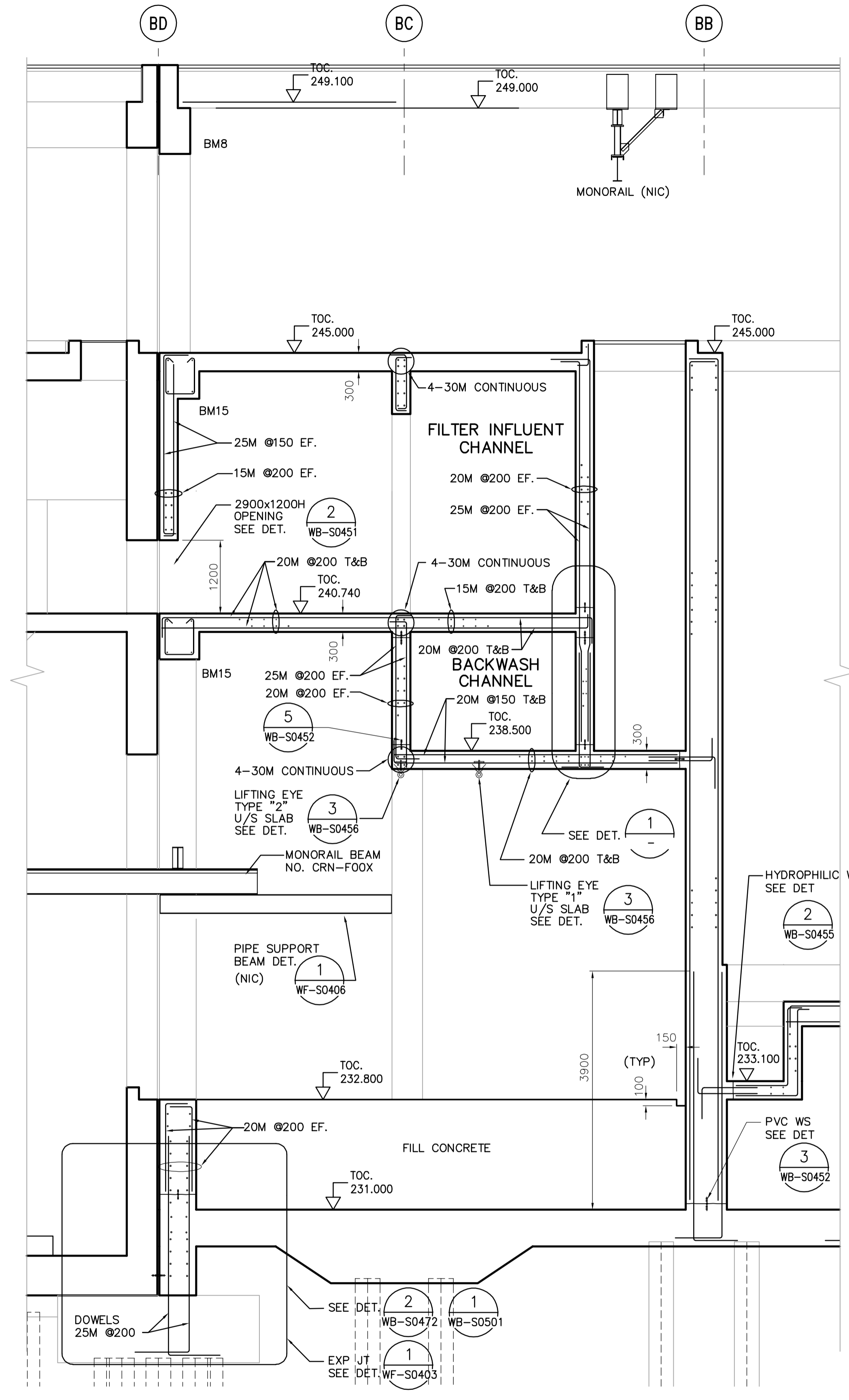


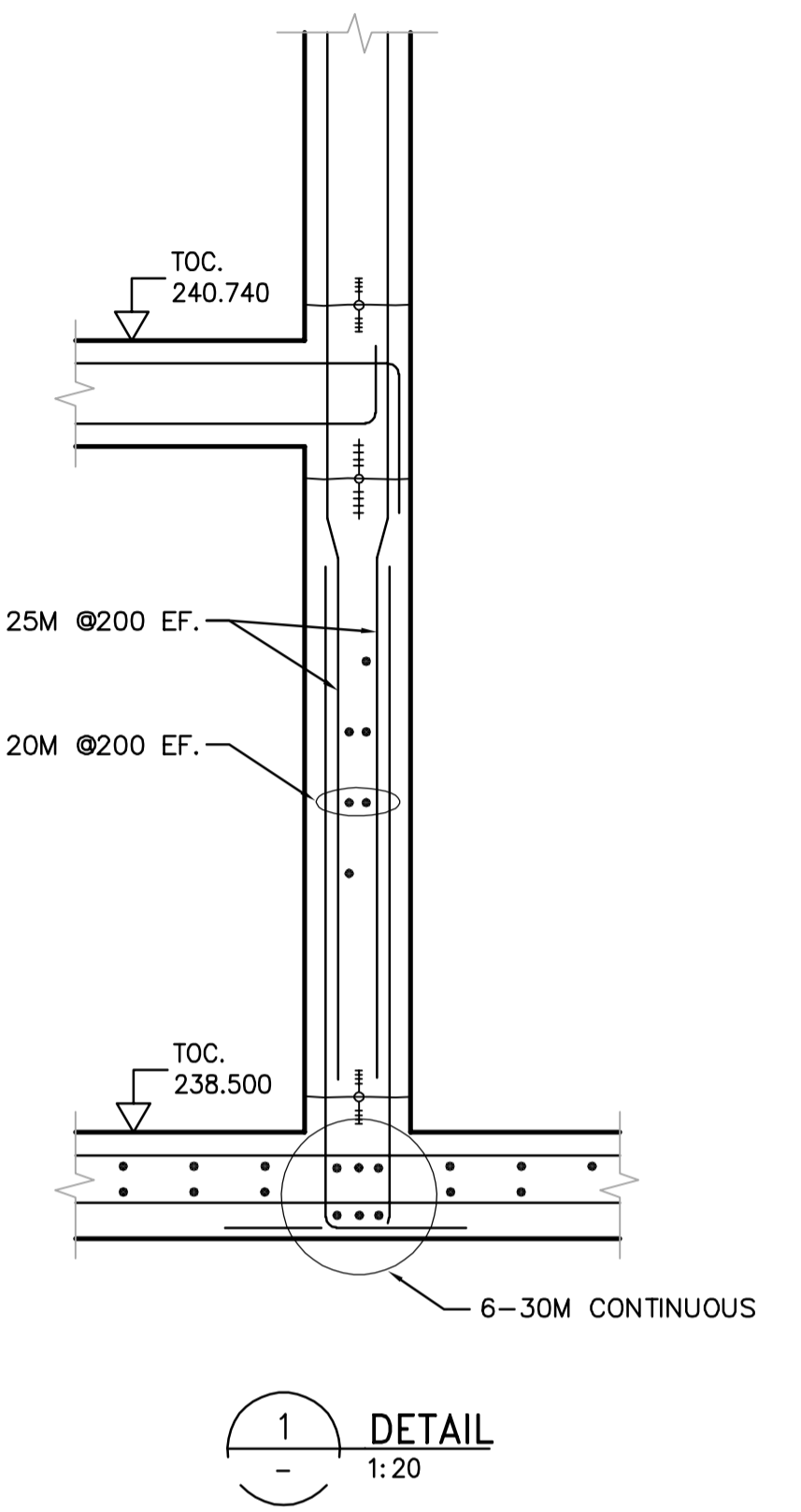
J SECTION
WF-S0101 1:50

- WF-S0105
- WF-S0111
- WF-S0115
- WF-S0117
- WF-S0121
- WF-S0125
- WF-S0131
- WF-S0135
- WF-S0141
- WF-S0146



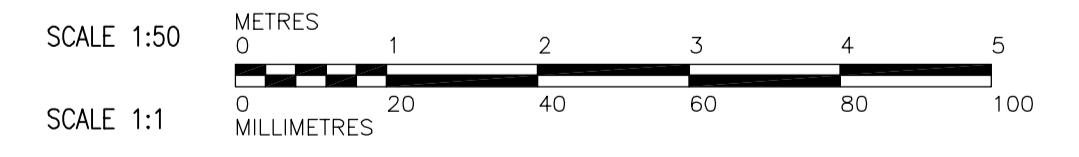
K SECTION
WF-S0101 1:50

- WF-S0105
- WF-S0111
- WF-S0115
- WF-S0117
- WF-S0121
- WF-S0125
- WF-S0131
- WF-S0135
- WF-S0141
- WF-S0146



1 DETAIL
1:20

NOTES:
1. SEE PLANS FOR SLAB REINFORCEMENT.



 Certificate of Authorization CH2M HILL Canada Ltd. No. 1441 Expiry: April 30, 2006	 Frederickson Cooper ARCHITECTS	 A Veolia International Ltd. Company	ENGINEER'S SEAL ORIGINAL SIGNED BY D. KRUGER 2006/02/06	 THE CITY OF WINNIPEG WATER AND WASTE DEPARTMENT ENGINEERING DIVISION WATER TREATMENT PLANT FILTRATION FOUNDATIONS AND CONCRETE STRUCTURES STRUCTURAL FILTRATION AREA SECTIONS	CITY FILE NUMBER SHEET OF
	DESIGNED BY KA CHECKED BY AP DRAWN BY PM APPROVED BY DJT SCALE: 1:50 RELEASED FOR CONSTRUCTION BY: R. SOROKOWSKI	CONSULTANT DRAWING NO. WF-S0208	CITY DRAWING NUMBER 1-060F-A-50208-001-00D		
	00 ISSUED FOR TENDER 2006/02/03 KA NO. REVISIONS DATE BY DATE 2005/08/10 DATE 2006/02/08				