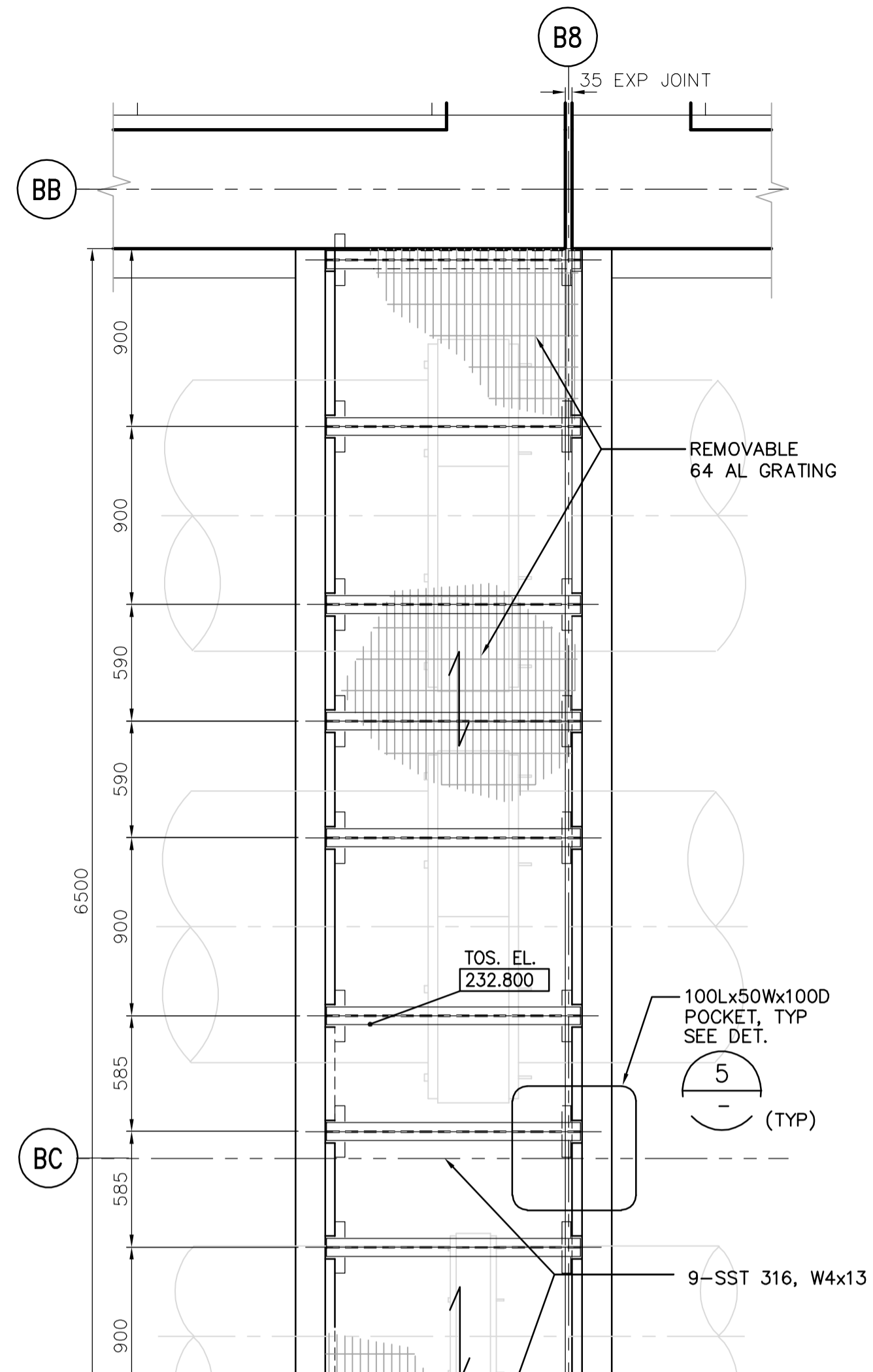
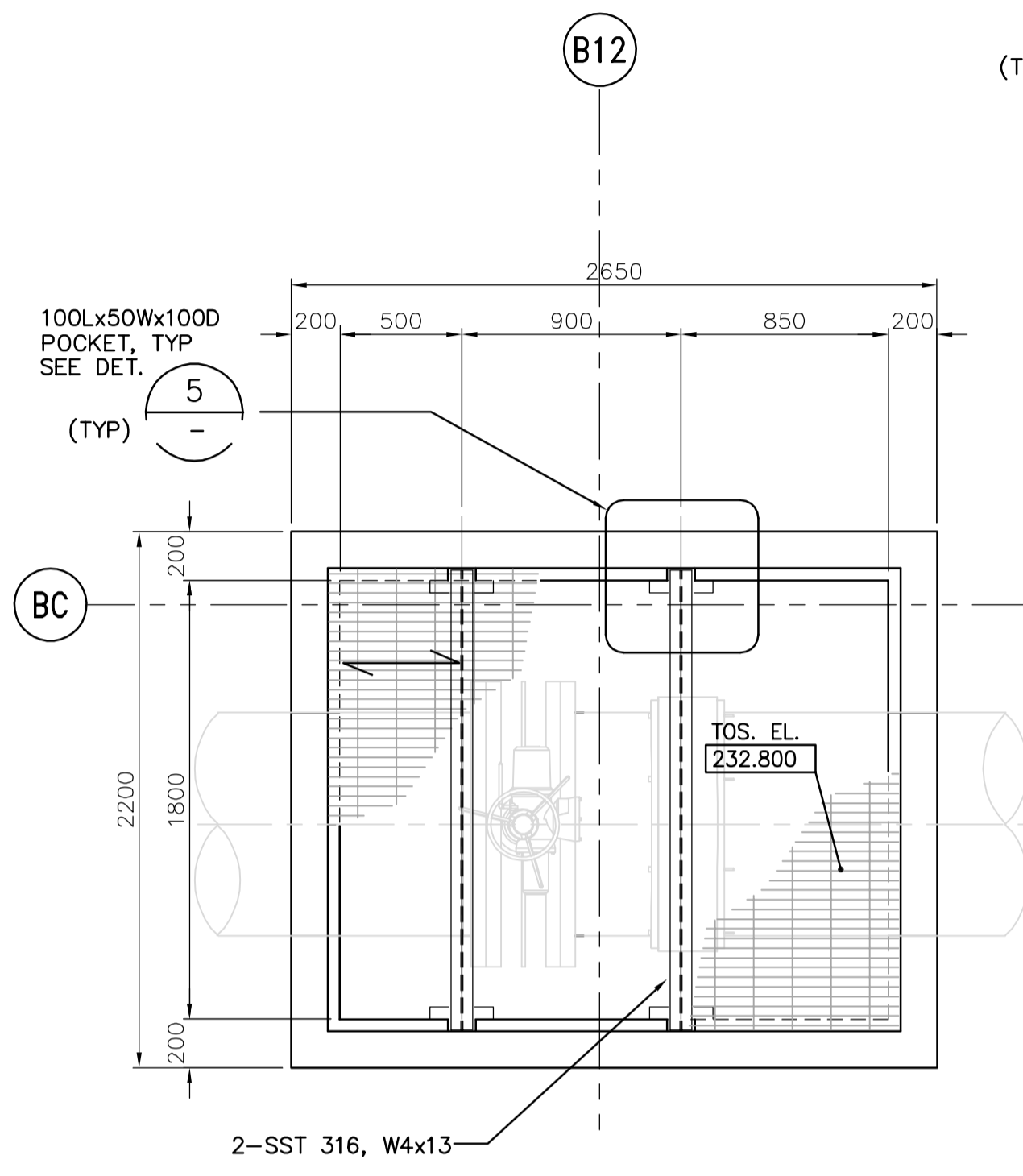


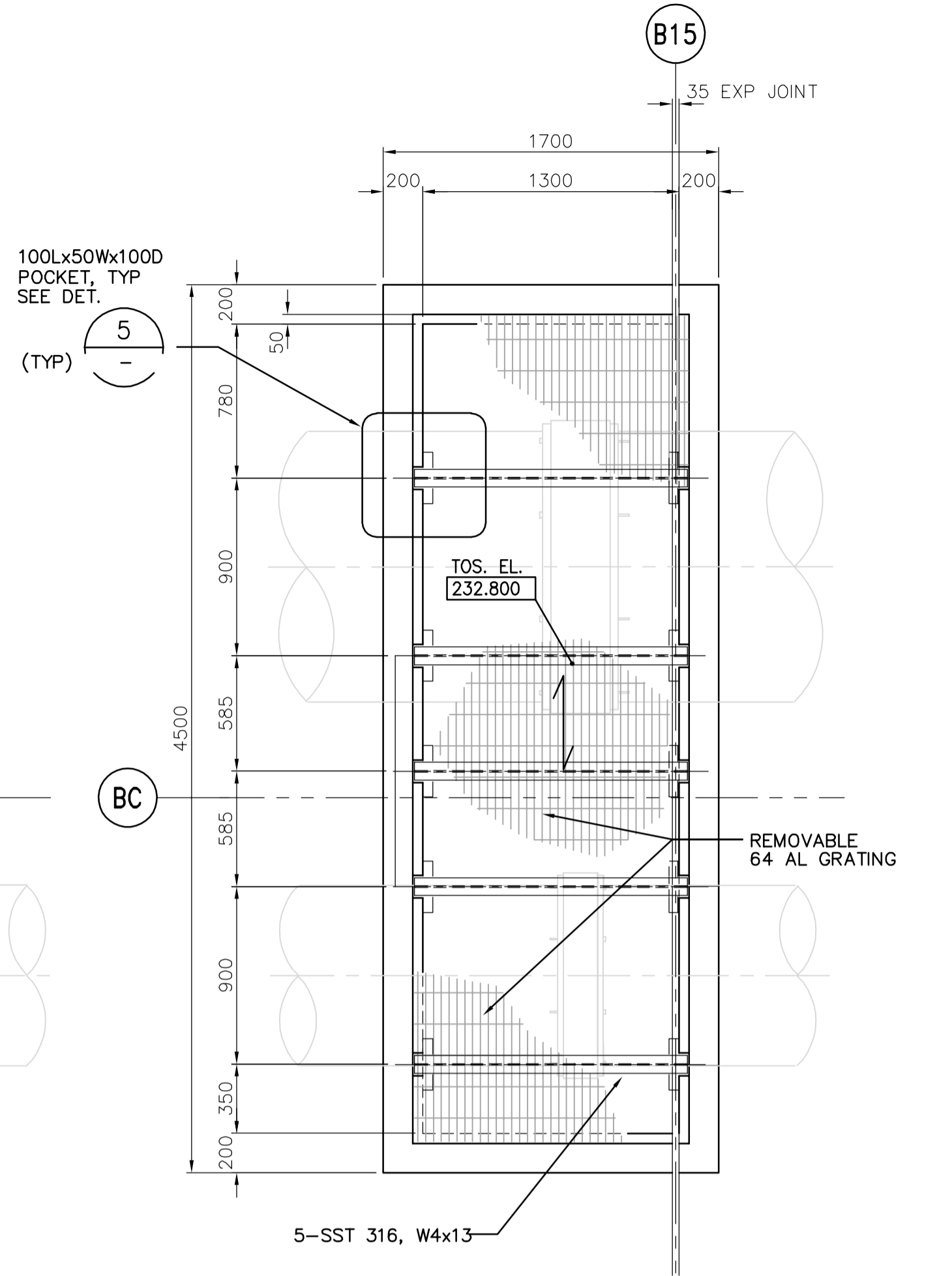
VALVE BOX NO. 1
 1 DETAIL
 1:25



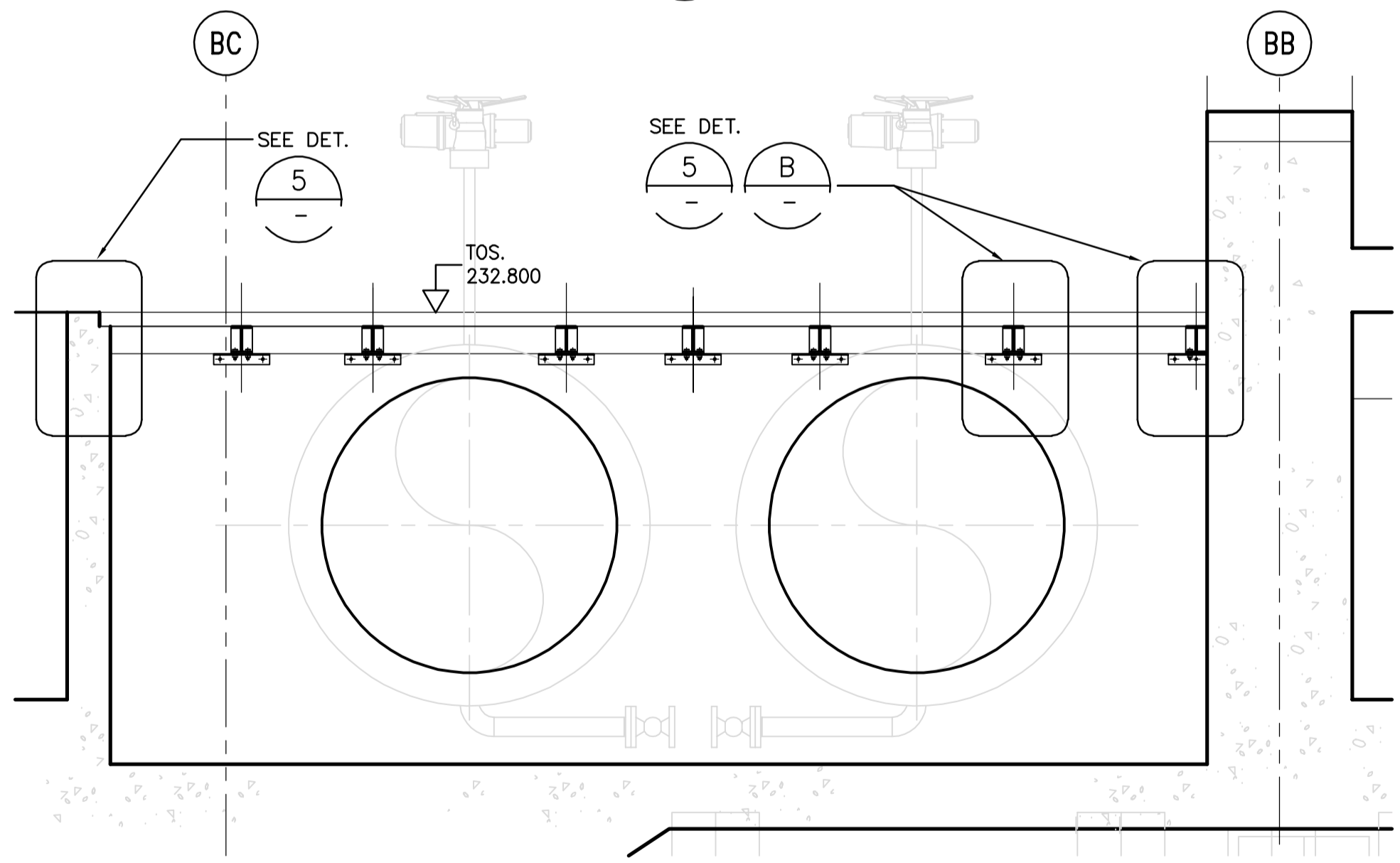
VALVE BOX NO. 2
 2 DETAIL
 1:25



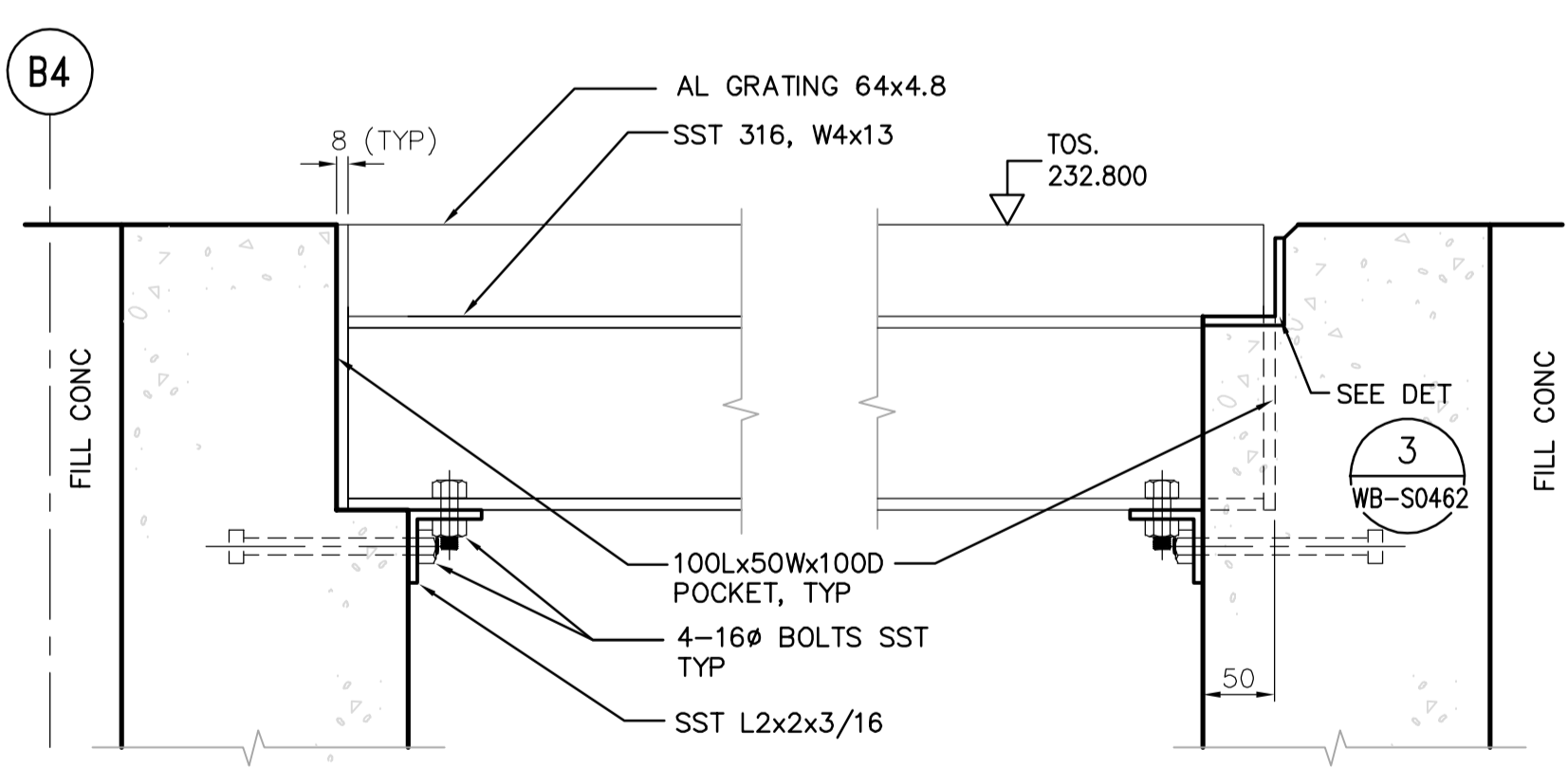
VALVE BOX NO. 3
 3 DETAIL
 1:25



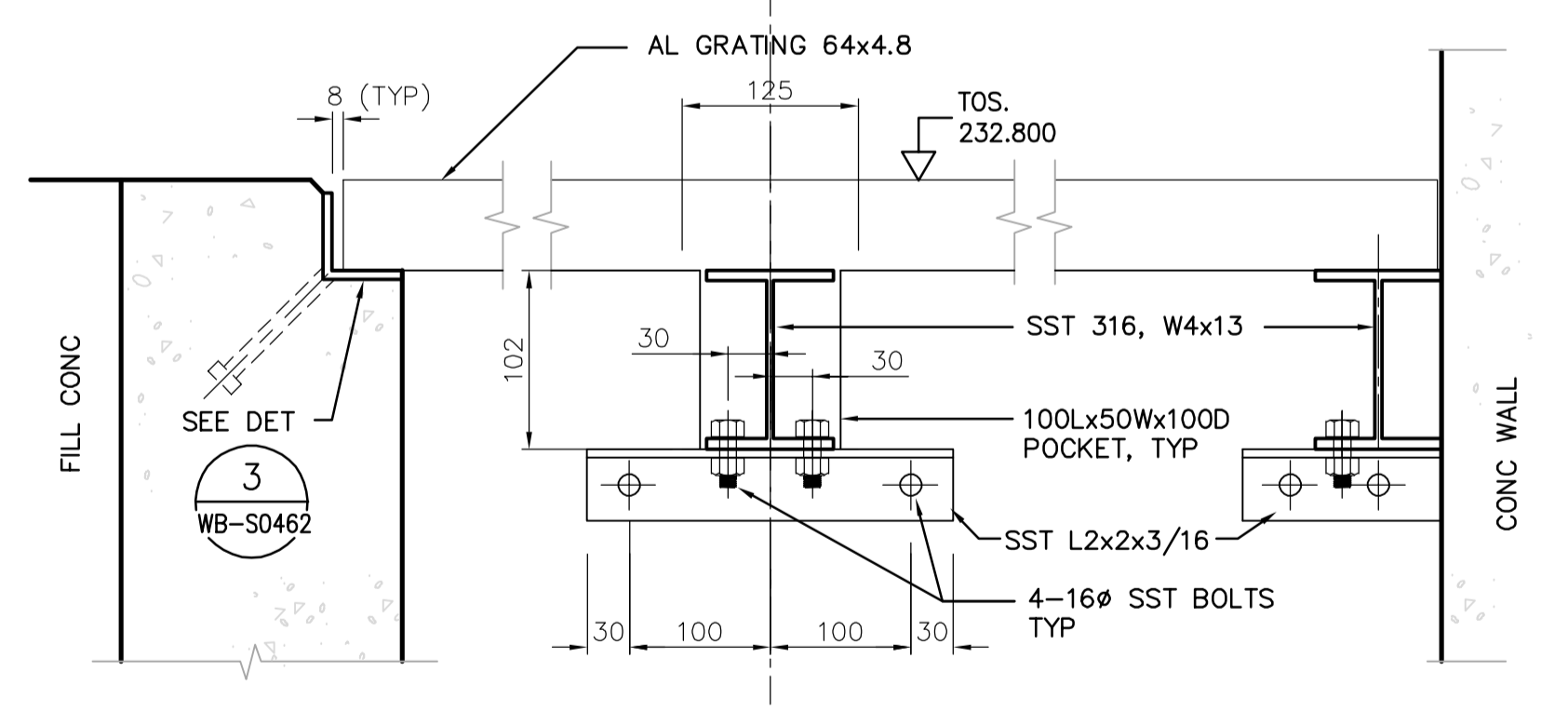
VALVE BOX NO. 4
 4 DETAIL
 1:25



A SECTION
 1:25



B SECTION
 NTS



5 DETAIL
 NTS

APECA
 Certificate of Authorization
 CH2M HILL Canada Ltd.
 No. 1441 Expiry: April 30, 2006

B.M. ELEV.			
DESIGNED BY	KA	CHECKED BY	AP
DRAWN BY	PM	APPROVED BY	DJT
SCALE:	AS SHOWN	RELEASED FOR CONSTRUCTION BY:	R. SOROKOWSKI
00 ISSUED FOR TENDER	2006/02/03	DATE	2005/11/30
NO. REVISIONS	DATE	BY	DATE

CH2MHILL
 Frederickson Cooper
 ARCHITECTS

EarthTech
 A Veolia International Ltd. Company

ENGINEER'S SEAL
 ORIGINAL SIGNED BY
 D. KRUGER
 2006/02/06
 CONSULTANT DRAWING NO.
 WF-S0404

THE CITY OF WINNIPEG
 WATER AND WASTE DEPARTMENT
 ENGINEERING DIVISION

WATER TREATMENT PLANT
 FILTRATION
 FOUNDATIONS AND CONCRETE STRUCTURES
 STRUCTURAL
 FILTRATION AREA
 DETAILS
 CITY FILE NUMBER
 SHEET OF
 CITY DRAWING NUMBER
1-060F-A-S0404-001-00D