
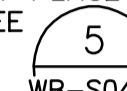
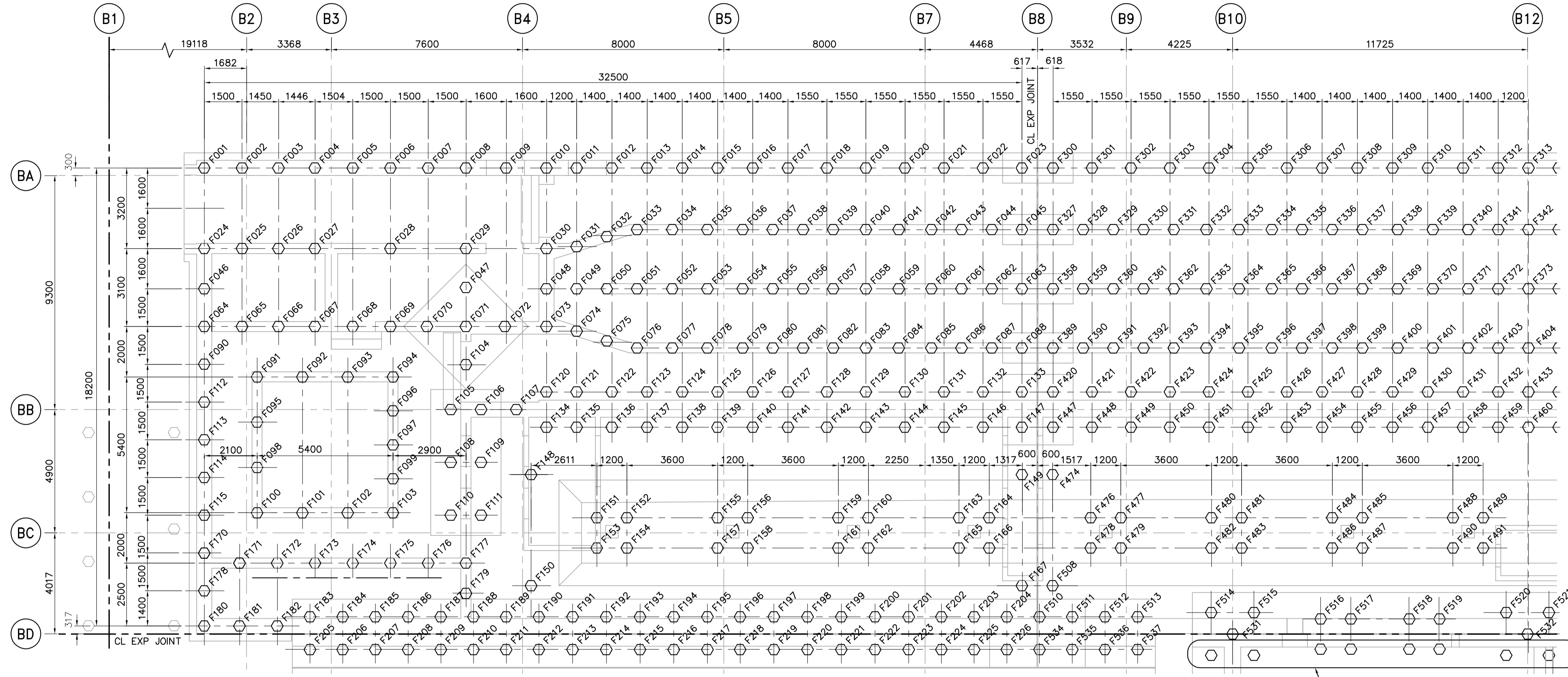
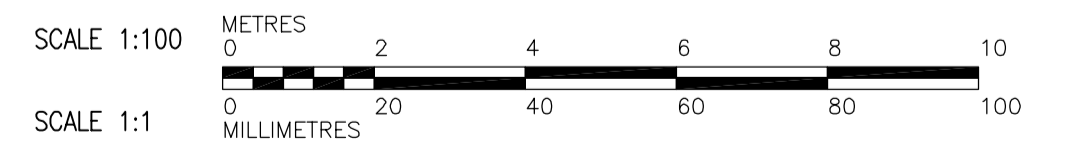
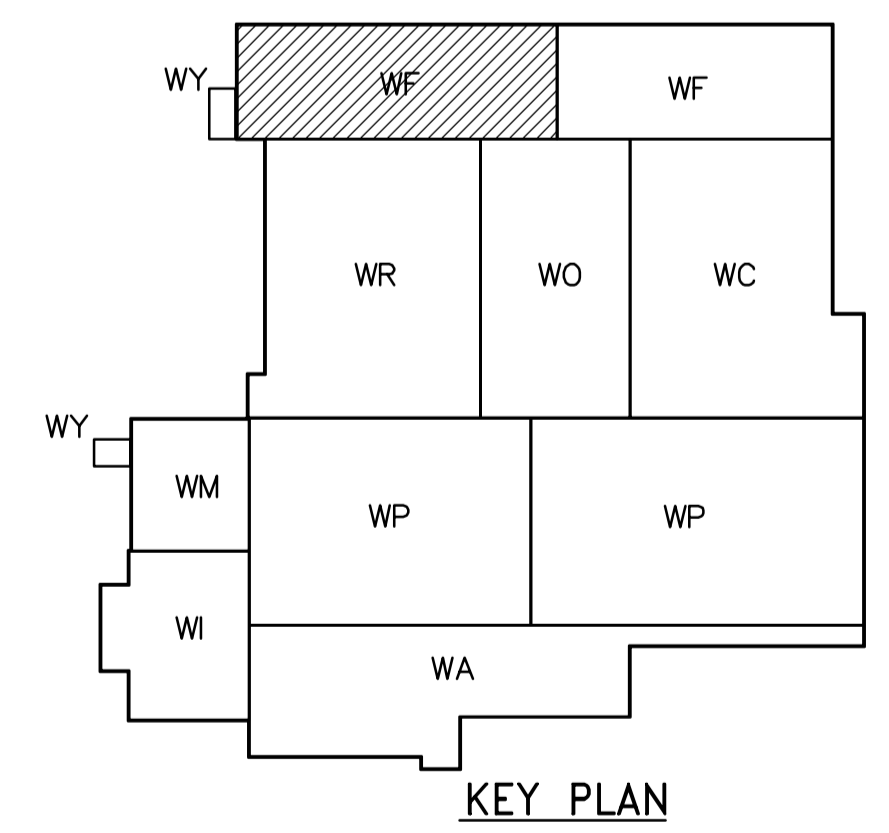






- NOTES:**
- FOR GENERAL NOTES SEE DWG WM-S9002.
 - NUMBERING OF PILES DOES NOT INDICATE SEQUENCE OF INSTALLATION.
 - ALL PILES TO BE 400# HEX.
 -  NOT IN CONTRACT
 - PILES WITHOUT NUMBERS ARE CALLED UP ON THE DRAWINGS FOR THE ADJACENT AREA.
 - FOR TYPICAL CAST IN-PLACE PILE EXTENSION AND CUT-OFF DETAILS SEE  WB-S0460
 - SEE PILE SCHEDULE ON DWG WF-S0505, WF-S0506, WF-S0507.



SEE DWG. WO-F0105

PILING PLAN
1:100



 Certificate of Authorization CH2M HILL Canada Ltd. No. 1441 Expiry: April 30, 2006	 Frederickson Cooper ARCHITECTS	 A Web International Ltd. Company	ENGINEER'S SEAL ORIGINAL SIGNED BY D. KRUGER 2006/02/06	 THE CITY OF WINNIPEG WATER AND WASTE DEPARTMENT ENGINEERING DIVISION WATER TREATMENT PLANT FILTRATION FOUNDATIONS AND CONCRETE STRUCTURES STRUCTURAL FILTRATION AREA 1 PILING PLAN	CITY FILE NUMBER SHEET OF
			CONSULTANT DRAWING NO. WF-F0105		CITY DRAWING NUMBER 1-060F-B-F0105-001-00D
B.M. ELEV. 00 ISSUED FOR TENDER 2006/02/03 DK NO. REVISIONS DATE BY	DESIGNED BY DK CHECKED BY AP DRAWN BY PM APPROVED BY DJT SCALE: 1:100 RELEASED FOR CONSTRUCTION BY: R. SOROKOWSKI DATE 2005/08/30 DATE 2006/02/08				