
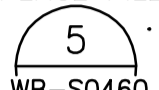
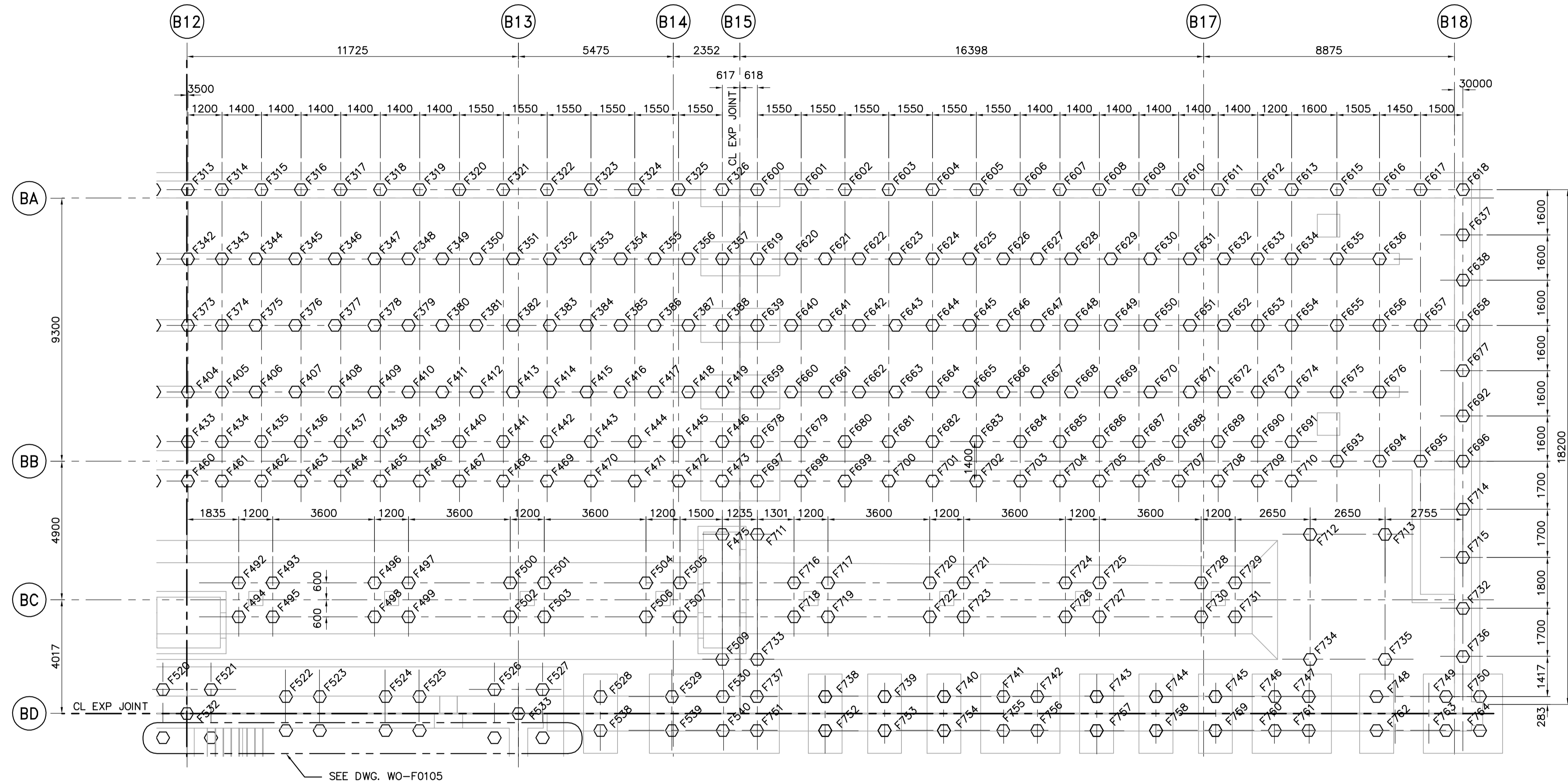
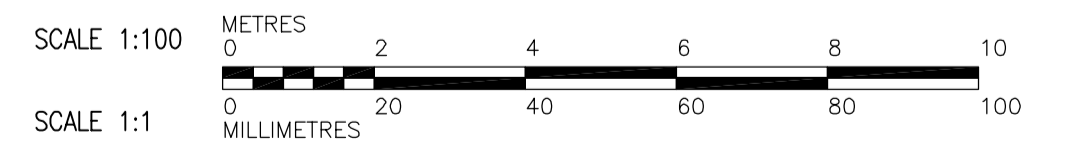
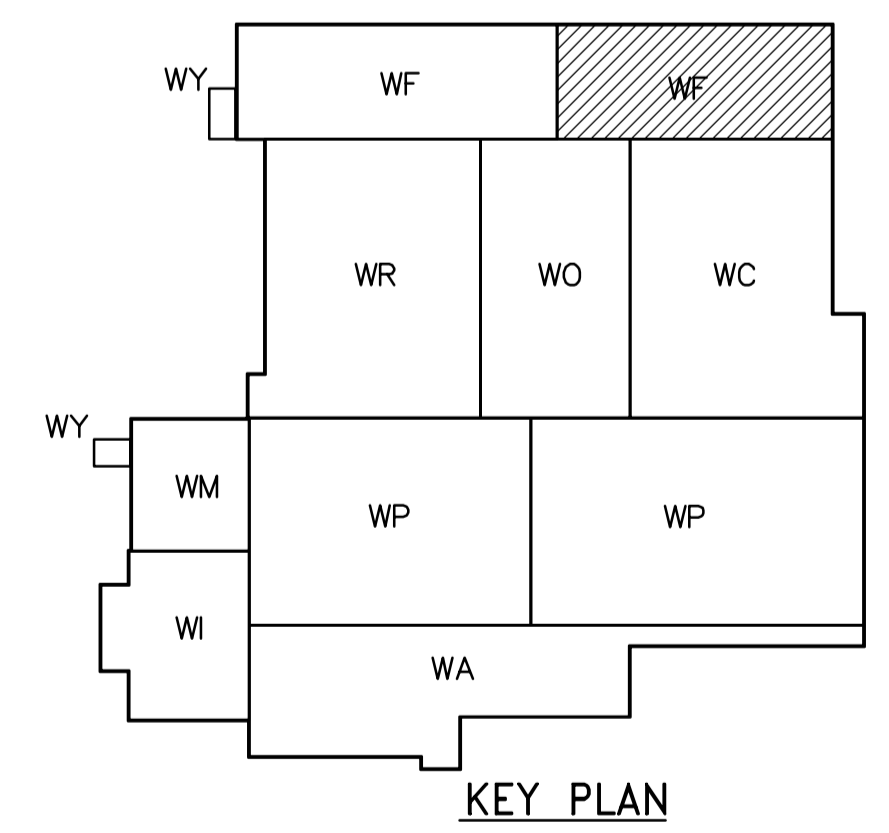






- NOTES:**
- FOR GENERAL NOTES SEE DWG WM-S9002.
  - NUMBERING OF PILES DOES NOT INDICATE SEQUENCE OF INSTALLATION.
  - ALL PILES TO BE 400# HEX.
  -  NOT IN CONTRACT
  - PILES WITHOUT NUMBERS ARE CALLED UP ON THE DRAWINGS FOR THE ADJACENT AREA.
  - FOR TYPICAL CAST IN-PLACE PILE EXTENSION AND CUT-OFF DETAILS SEE  WB-S0460
  - SEE PILE SCHEDULE ON DWG WF-S0505, WF-S0506, WF-S0507.



**PILING PLAN**  
1:100



 <b>Certificate of Authorization</b> CH2M HILL Canada Ltd. No. 1441 Expiry: April 30, 2006	 Frederickson Cooper ARCHITECTS		 A Geo International Ltd. Company		ENGINEER'S SEAL  ORIGINAL SIGNED BY D. KRUGER  2006/02/06	 <b>THE CITY OF WINNIPEG</b> WATER AND WASTE DEPARTMENT ENGINEERING DIVISION  WATER TREATMENT PLANT FILTRATION FOUNDATION AND CONCRETE STRUCTURES  STRUCTURAL FILTRATION AREA 2 PILING PLAN	CITY FILE NUMBER
	DESIGNED BY DK CHECKED BY AP		APPROVED BY DJT		SHEET OF		
	DRAWN BY PM SCALE: 1:100		RELEASED FOR CONSTRUCTION BY: R. SOROKOWSKI		CITY DRAWING NUMBER <b>1-060F-B-F0106-001-000</b>		
	00 ISSUED FOR TENDER 2006/02/03 DK NO. REVISIONS DATE BY		DATE 2005/08/30 DATE 2006/02/08		CONSULTANT DRAWING NO. WF-F0106		