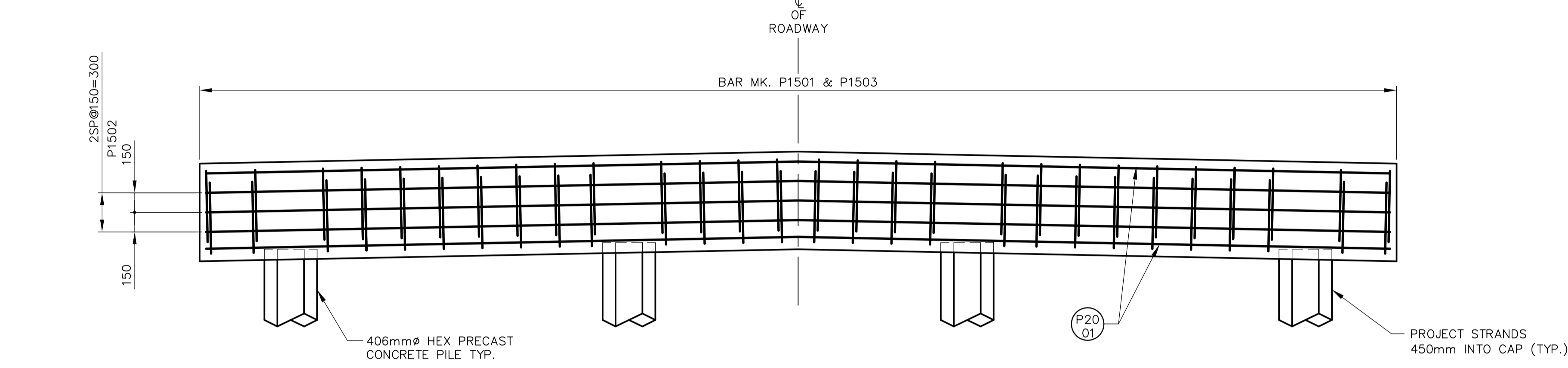
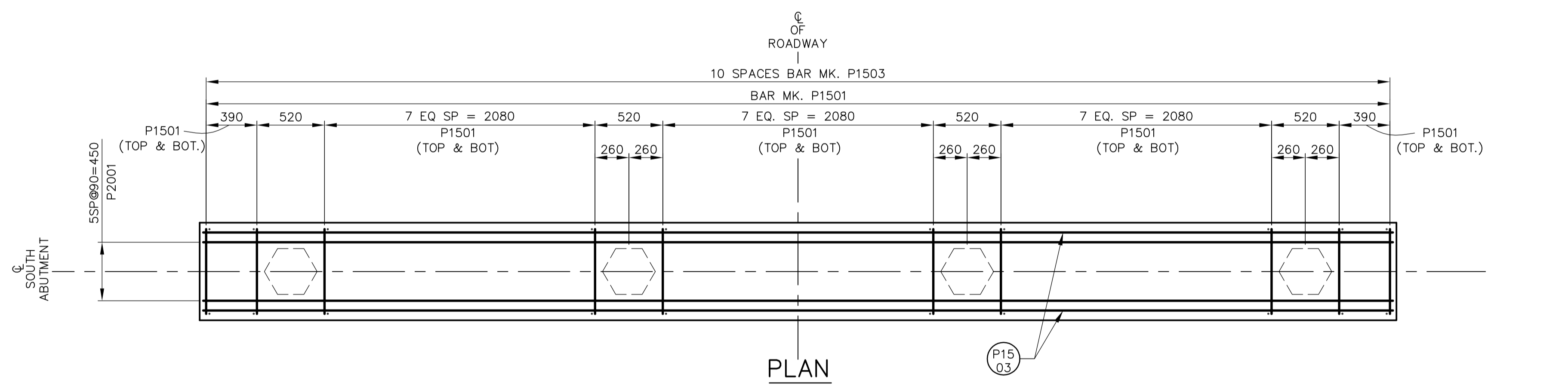


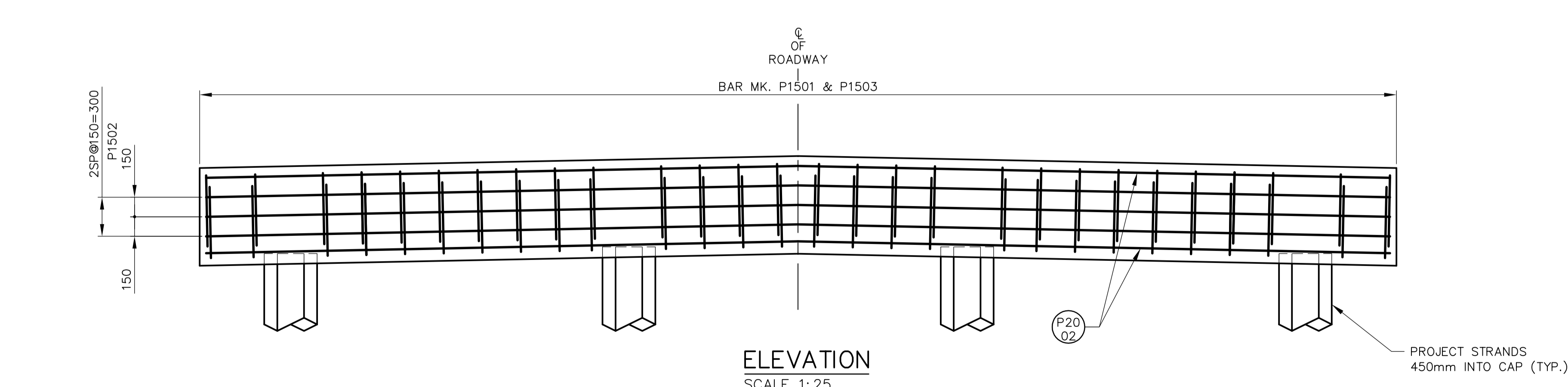
PLAN



ELEVATION
SCALE 1:25

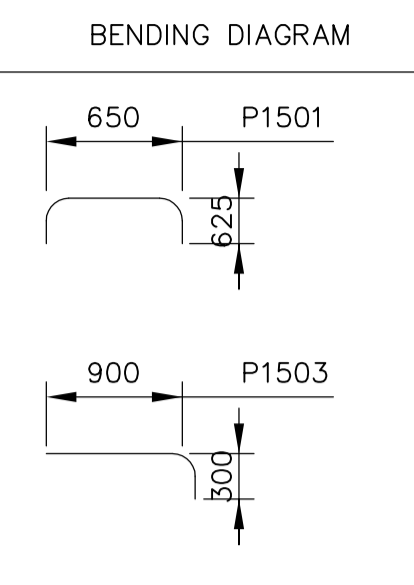


PLAN

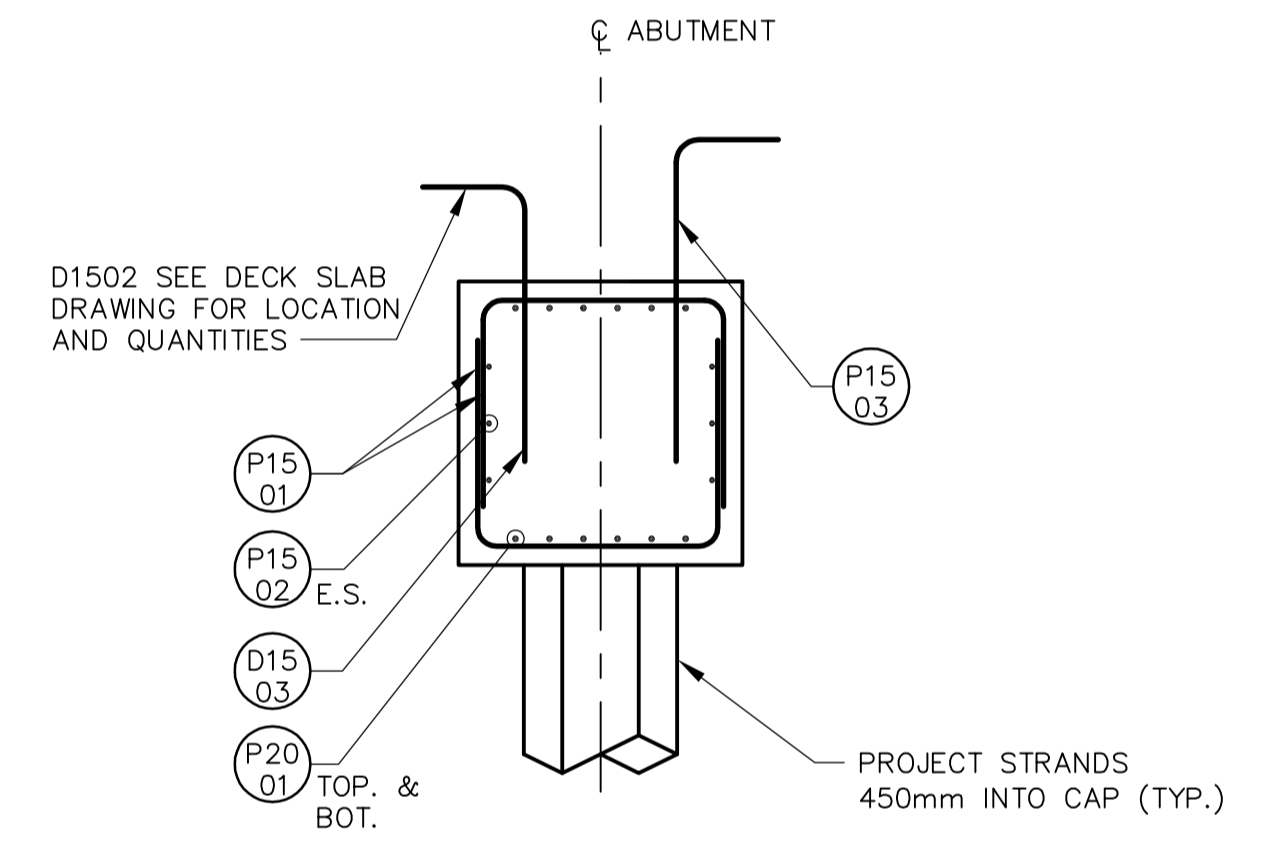
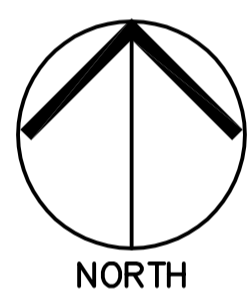


ELEVATION
SCALE 1:25

BILL OF REINFORCING STEEL FOR BOTH ABUTMENTS							
STRAIGHT BARS				BENT BARS			
MK.	No.	LENGTH	MASS	MK.	No.	LENGTH	MASS
P1502	12	9100	171	P1501	112	1900	334
P2001	24	9100	514	P1503	22	1200	41
TOTAL MASS OF REINFORCING STEEL							1060 kg.
TOTAL VOLUME OF STRUCTURAL CONCRETE (ABUTMENTS)							4.6 m ³
TOTAL NUMBER OF HEX. PRECAST PILE							8



- NOTES:
1. ALL DIMENSIONS GIVEN ARE OUT TO OUT, EXCEPT RADII ARE INSIDE DIMENSIONS.
 2. ALL REINFORCING STEEL SHALL BE DEFORMED REINFORCING, UNLESS NOTED OTHERWISE IN THE ABOVE BILL OF REINFORCING STEEL.
 3. ALL REINFORCING STEEL SHALL CONFORM TO CAN/CSA G30.16-M92 GRADE 400W UNLESS NOTED OTHERWISE IN THE ABOVE BILL OF REINFORCING STEEL.
 4. LIKE BARS SHALL BE BUNDLED, SECURELY TIED AND IDENTIFIED AS TO MARK AND SITE No. BY APPROPRIATE MEANS. ALL OTHER ITEMS SHALL BE IDENTIFIED IN A SIMILAR FASHION.



1 SECTION
SCALE 1:20

<p>Certificate of Authorization Earth Tech Canada Inc. No. 730 Expiry: April 30, 2006</p>		<p>Frederickson Cooper ARCHITECTS</p>		<p>A Tyco International Ltd. Company</p>			
DESIGNED BY	AP	CHECKED BY	EBL	DESIGNED BY	AP	CHECKED BY	EBL
DRAWN BY	KC	APPROVED BY	D.J. TANIGUCHI	DRAWN BY	KC	APPROVED BY	D.J. TANIGUCHI
SCALE:	AS NOTED	RELEASED FOR CONSTRUCTION BY:	R. SOROKOWSKI	SCALE:	AS NOTED	RELEASED FOR CONSTRUCTION BY:	R. SOROKOWSKI
00	ISSUED FOR TENDER	06/02/03	KC	00	ISSUED FOR TENDER	06/02/03	KC
NO.	REVISIONS	DATE	BY	NO.	REVISIONS	DATE	BY

THE CITY OF WINNIPEG
 WATER AND WASTE DEPARTMENT
 ENGINEERING DIVISION
 WATER TREATMENT PLANT
 AQUEDUCT BRIDGES
 FOUNDATIONS & CONCRETE STRUCTURES
 STRUCTURAL
 WESTERN BRIDGE
 ABUTMENT REINFORCING DETAILS

CITY FILE NUMBER	
SHEET 4 OF 8	
CITY DRAWING NUMBER	1-060IN-A-S0471-001-00D