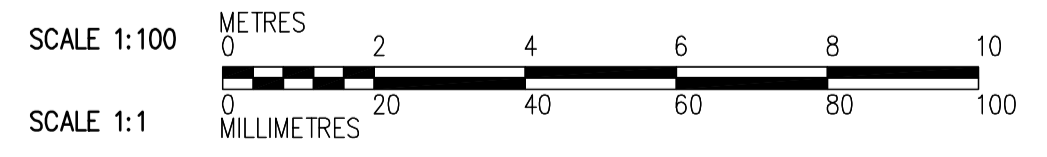
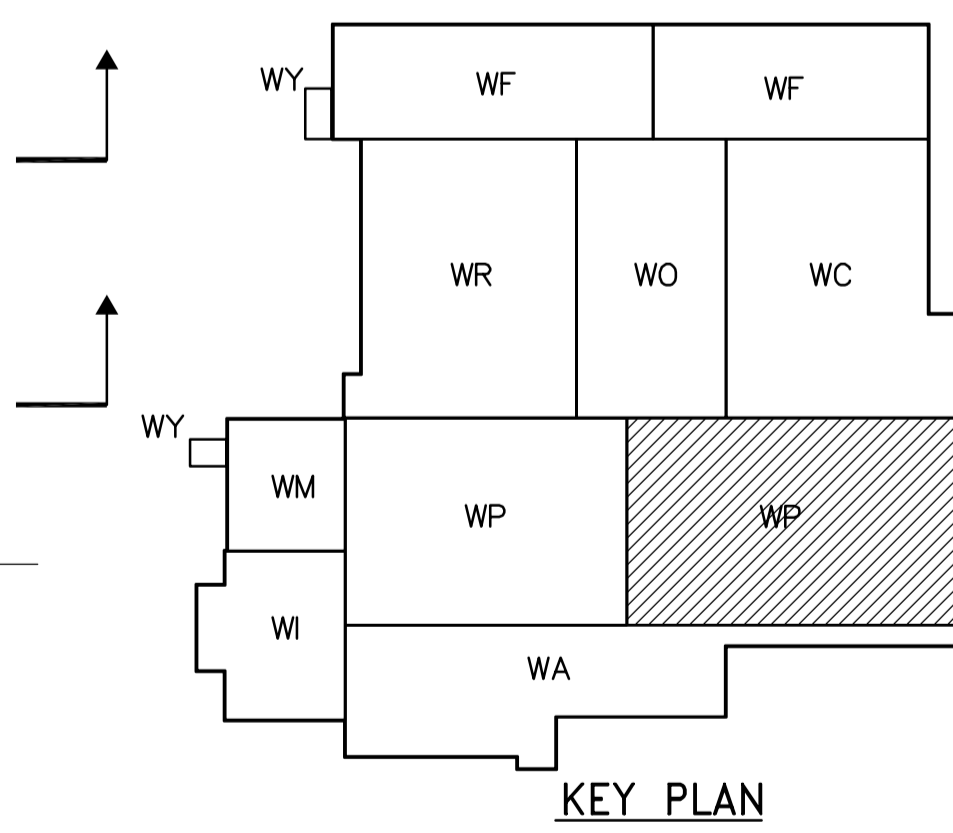


- HPT 236.158
TYP FOR APRONS
- CONCRETE APRON, TYPE "B" SEE 1
WB-S0457
- CONCRETE APRON, TYPE "A" SEE 1
WB-S0457

- NOTES:**
- FOR BEAM AND COLUMN SCHEDULE SEE DWG WP-S0515.
 - PC 'X' - DENOTES PILE CAP TYPE, SEE DWG WP-S0401 FOR DETAILS.
 - ENCASE ALL PIPING UNDER BUILDING IN CONCRETE. SEE 1, 2, 4
WB-S0458 WB-S0458 WB-S0458
 - EQUIPMENT PADS, APPROX. LOCATION SHOWN. TOTAL CONCRETE FOR TENDER: 20 m² X 100 mm HIGH.

- REBAR LEGEND:**
- TOP BARS
 - BOTTOM BARS



FIRST FLOOR PLAN
1:100

APECA
Certificate of Authorization
CH2M HILL Canada Ltd.
No. 1441 Expiry: April 30, 2006

B.M. ELEV.			
DESIGNED BY	RZ	CHECKED BY	AP
DRAWN BY	RL	APPROVED BY	DJT
SCALE:	1:100	RELEASED FOR CONSTRUCTION BY:	R. SOROKOWSKI
NO. REVISIONS		DATE	2005/06/25
		DATE	2006/02/08

CH2MHILL
Frederickson Cooper ARCHITECTS

EarthTech
A Geo International Ltd. Company

DESIGNED BY: RZ
CHECKED BY: AP
DRAWN BY: RL
APPROVED BY: DJT
SCALE: 1:100
RELEASED FOR CONSTRUCTION BY: R. SOROKOWSKI

ENGINEER'S SEAL
ORIGINAL SIGNED BY: D. KRUGER
DATE: 2006/02/06
CONSULTANT DRAWING NO.: WP-S0112

THE CITY OF WINNIPEG
WATER AND WASTE DEPARTMENT
ENGINEERING DIVISION

WATER TREATMENT PLANT
FLOCCULATION AND DAF
FOUNDATIONS AND CONCRETE STRUCTURES

STRUCTURAL
FLOC/DAF AREA 2
FIRST FLOOR PLAN

CITY FILE NUMBER
SHEET OF
CITY DRAWING NUMBER
1-060P-A-3012-001-00D