

FOR CONTINUATION, SEE DWG WP-F0105

WP-S0213/214/215
WP-S0211/212
WP-S0209/210

WP-S0207/208

WP-S0205/206
WP-S0203/204

3 SPACES @ 2400 = 7200

11418

400

2482

2050

1700

1200

600

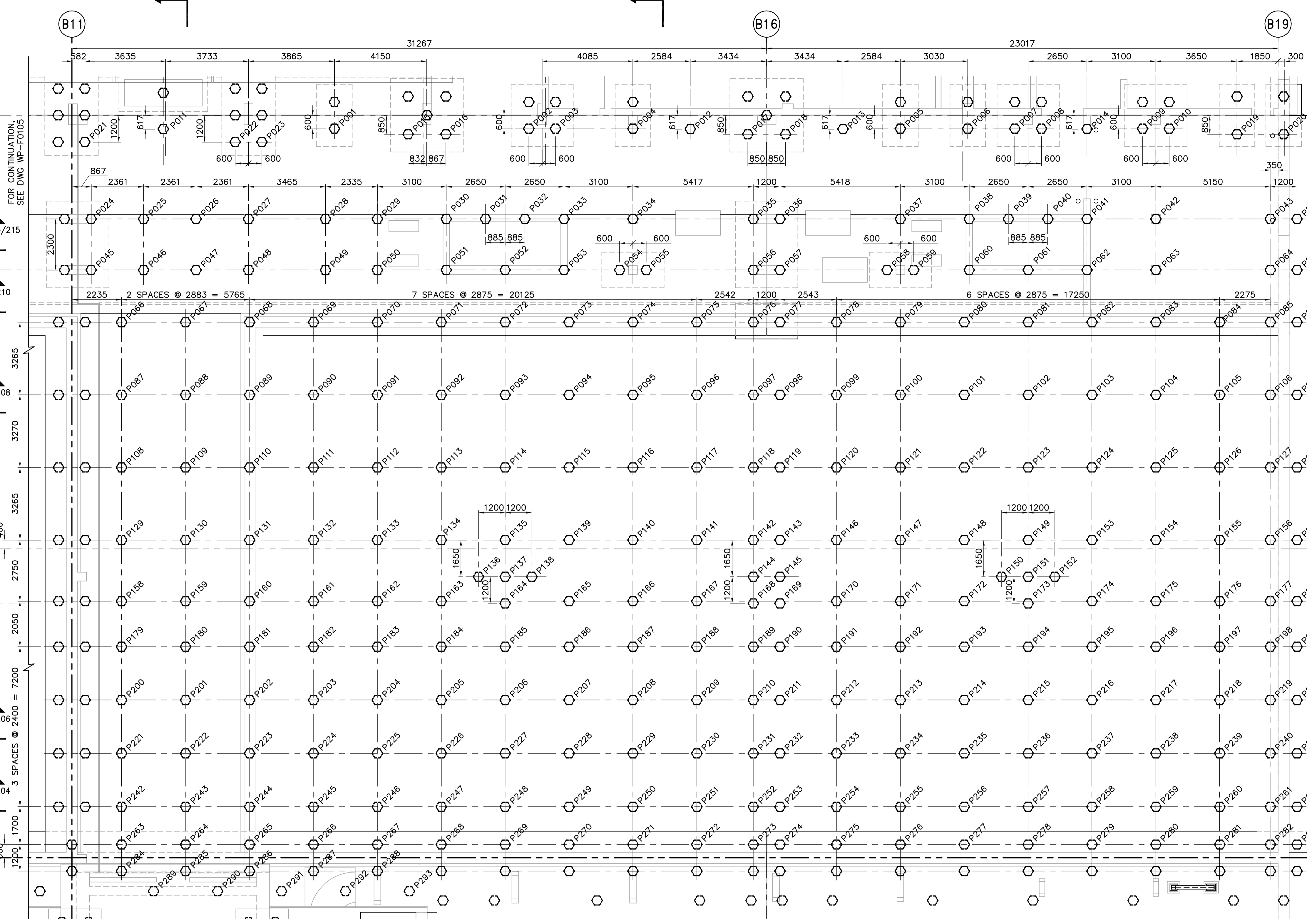
12550

3265

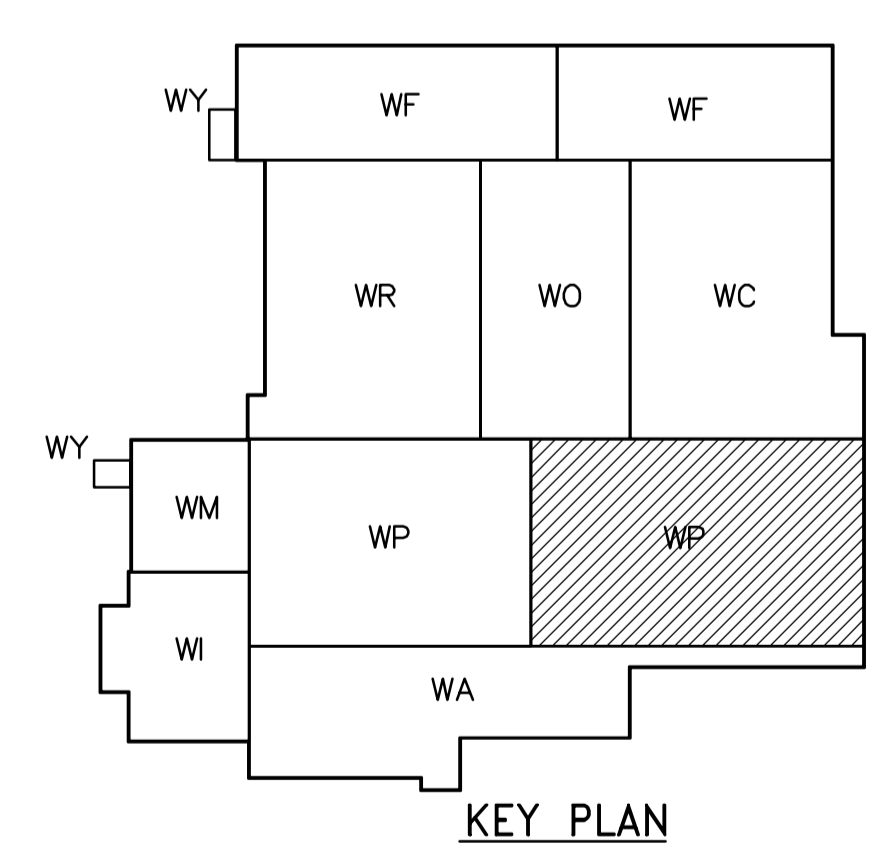
3270

3265

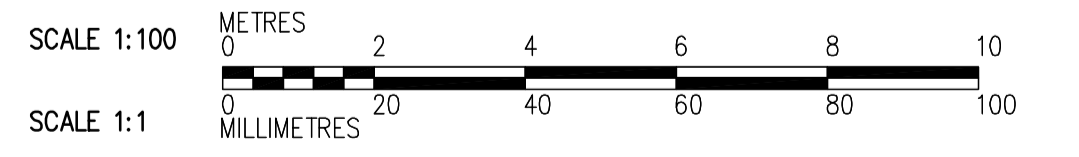
6959



- NOTES:**
- FOR GENERAL NOTES SEE DWG WM-S9002.
 - NUMBERING OF PILES DOES NOT INDICATE SEQUENCE OF INSTALLATION.
 - ALL PILES TO BE 400# HEX.
 - NOT IN CONTRACT
 - PILES WITHOUT NUMBERS ARE CALLED UP ON THE DRAWINGS FOR THE ADJACENT AREA.
 - FOR TYPICAL CAST IN-PLACE PILE EXTENSION AND CUT-OFF DETAILS SEE WB-S0460
 - SEE PILE SCHEDULE ON DWG WP-S0506 AND WP-S0507.



PILING PLAN
1:100



 APEGN Certificate of Authorization CH2M HILL Canada Ltd. No. 1441 Expiry: April 30, 2006	B.M. ELEV.	 Frederickson Cooper ARCHITECTS	 A Geo International Ltd. Company	ENGINEER'S SEAL ORIGINAL SIGNED BY D. KRUGER 2006/02/06	 THE CITY OF WINNIPEG WATER AND WASTE DEPARTMENT ENGINEERING DIVISION WATER TREATMENT PLANT FLOCCULATION AND DAF FOUNDATIONS AND CONCRETE STRUCTURES STRUCTURAL FLOC/DAF AREA 2 PILING PLAN	CITY FILE NUMBER
	00 ISSUED FOR TENDER 2006/02/03 RZ NO. REVISIONS DATE BY	DESIGNED BY RZ DRAWN BY RL SCALE: 1:100	CHECKED BY AP APPROVED BY DJT RELEASED FOR CONSTRUCTION BY: R. SOROKOWSKI	CONSULTANT DRAWING NO. WP-F0106		SHEET OF CITY DRAWING NUMBER 1-060P-B-F0106-001-00D