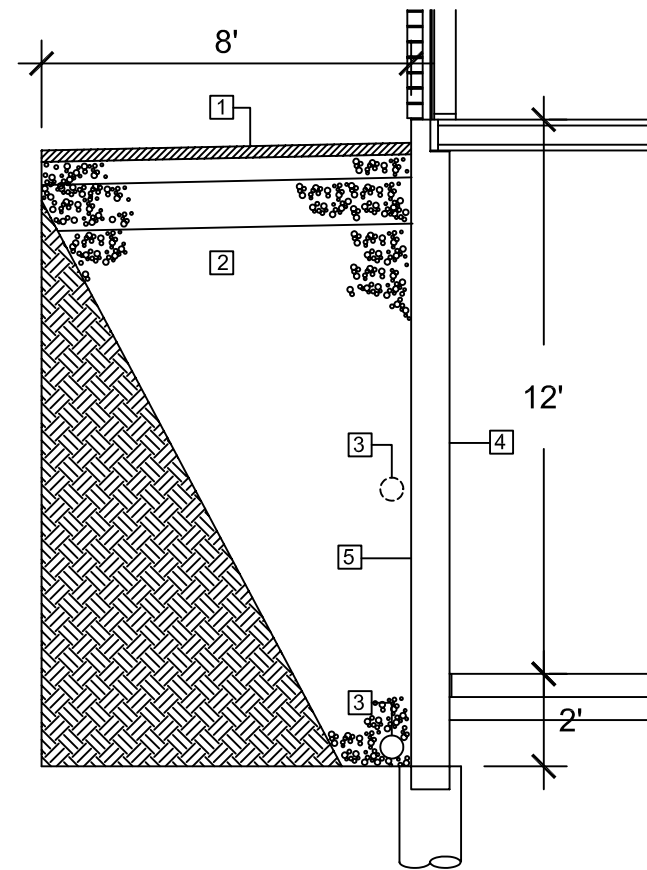


PARTIAL BASEMENT FLOOR PLAN

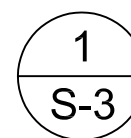
SCALE: NOT TO SCALE

NOTE:
DIMENSIONS ONLY APPROXIMATE
CONTRACTOR TO VERIFY ALL SITE
CONDITIONS AND DIMENSIONS
PRIOR TO ANY CONSTRUCTION



CONSTRUCTION NOTES:

- 1 EXCAVATE AND REMOVE EXISTING ASPHALT PAVEMENT, GRANULAR BASE, AND LOOSE, DISTURBED MATERIALS TO EXPOSE THE CLAY SUBGRADE. PROOF ROLL THE EXPOSED SUBGRADE TO IDENTIFY SOFT OR WEAK AREAS. SUPPLY AND INSTALL 300mm LAYER OF SUB-BASE (CW 3110), 150mm LAYER OF BASE COURSE (CW 3110) AND 75mm OF TYPE 1A ASPHALTIC CONCRETE PAVEMENT (CW 3410). COMPACT SUB-BASE AND BASE COURSE TO 100% STANDARD PROCTOR DENSITY. COMPACT ASPHALTIC CONCRETE PAVEMENT TO 97% MARSHALL DENSITY. PROVIDE POSITIVE DRAINAGE AWAY FROM THE BUILDING ON THE ASPHALTIC CONCRETE PAVEMENT SURFACE WITH A MINIMUM 10% SLOPE FOR A DISTANCE OF 3 m FROM THE FOUNDATION WALL.
- 2 EXCAVATE AT EXTERIOR OF FOUNDATION WALL IN AREA SHOWN. PROVIDE PROTECTIVE BARRICADES OF SAFETY FENCES AS SHOWN ON DRAWING S-2. REMOVE AND DISPOSE OF ALL EXCAVATED MATERIAL. BACKFILL WITH TYPE 1 MATERIAL (TABLE CW 2030.1) TO UNDERSIDE OF PAVEMENT SECTION IN 150 MM LIFTS AND COMPACT TO 98% STANDARD PROCTOR DENSITY. PLACE AND COMPACT FILL MATERIAL USING METHOD SO AS NOT TO DISTURB OR DAMAGE BUILDING DRAINAGE SYSTEM AND FOUNDATION WATERPROOFING. ENSURE COMPACTION PROCEDURES DO NOT DAMAGE FOUNDATION WALL BY OVER COMPACTION.
- 3 REMOVE EXISTING WEEPING TILE AT FOUNDATION WALL AND PROVIDE NEW 6" Ø WEEPING TILE, PERFORATED RIGID PVC C/W FILTER FABRIC. SLOPE PIPE TO LOW POINT. CONNECT TO EXISTING 6" Ø NON-PERFORATED RIGID PVC PIPE FROM LOW POINT TO EXISTING SUMP PIT. PROVIDE SANITARY "T" AT INSIDE OF FOUNDATION WALL.
- 4 THOROUGHLY CLEAN AND PREPARE INTERIOR FACE OF EXISTING FOUNDATION WALL. REPAIR ALL CRACKS AND HOLES WITH DEGUSSA BUILDING SYSTEMS, SONNEBORN GEL PATCH CONCRETE REPAIR MORTAR OR AN APPROVED EQUAL.
- 5 THOROUGHLY CLEAN AND PREPARE EXTERIOR FACES OF EXISTING FOUNDATION WALL AND FOOTING TO MANUFACTURER'S WRITTEN INSTRUCTIONS TO RECEIVE DEGUSSA BUILDING SYSTEMS, SONNEBORN GEL PATCH CONCRETE REPAIR MORTAR AND STONOSHIELD HLM 500 WATERPROOFING MEMBRANE OR AN APPROVED EQUAL. PROTECT THE WATERPROOFING MEMBRANE FROM DAMAGE THROUGHOUT THE CURING PROCESS. SUPPLY AND INSTALL SONOSHIELD DBS 6200 DRAIN BOARD SYSTEM FACING AWAY FROM THE FOUNDATION WALL SO THAT BACKFILL WILL BE PLACED AGAINST THE FABRIC.



BASEMENT WALL SECTION

SCALE: NOT TO SCALE

CRESCENTWOOD COMMUNITY CENTRE 1170 CORYDON AVE. WINNIPEG, MANITOBA		S-3
DATE: AUGUST 11, 2005	SCALE: NTS	
BASEMENT FLOOR PLAN, WALL SECTION & NOTES		

	THE CITY OF WINNIPEG PUBLIC WORKS DEPARTMENT BUILDING SERVICES DIVISION 100 MAIN STREET WINNIPEG, MANITOBA R3C 1A4
	PHONE: (204) 986-7266 FAX: (204) 986-7311