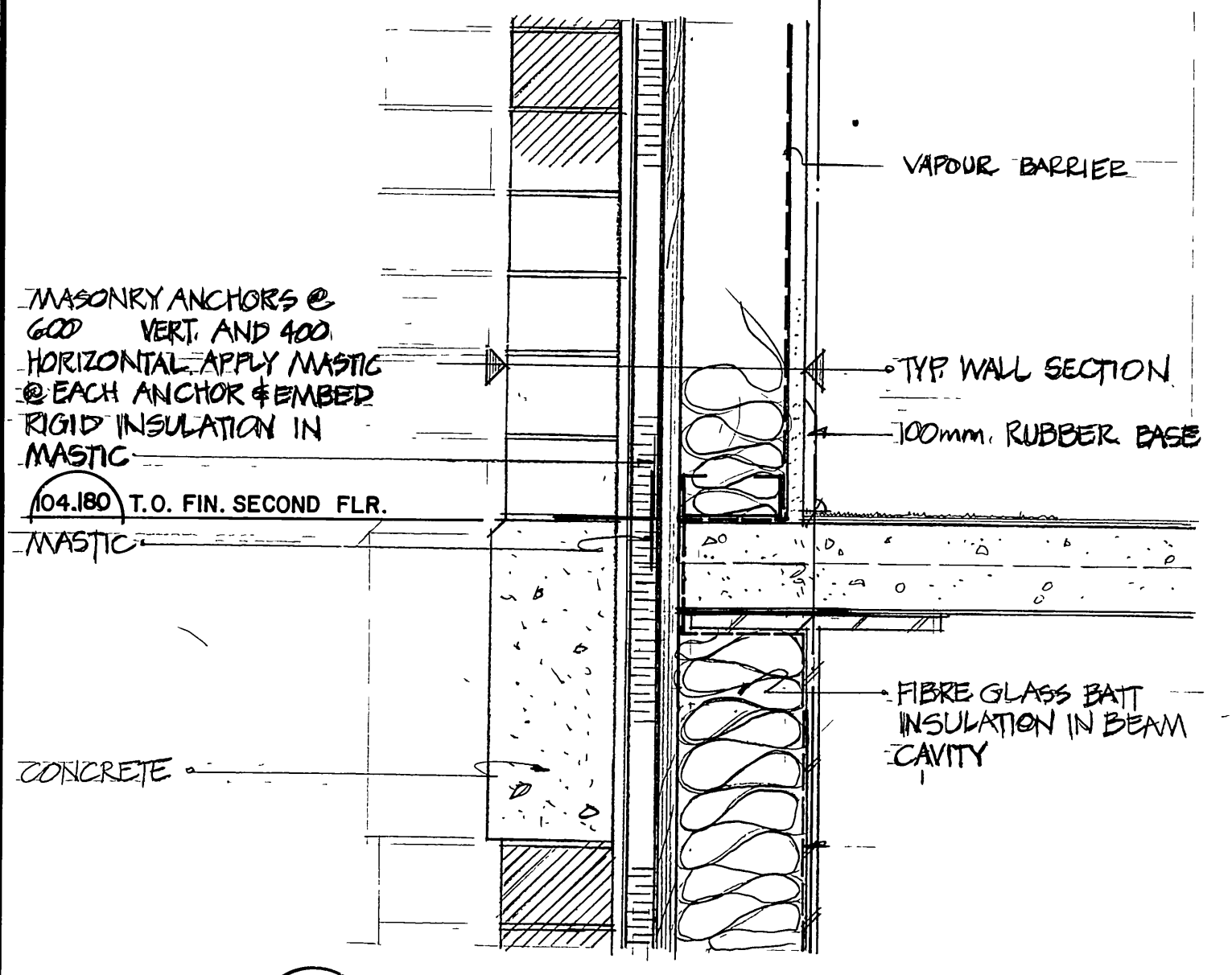
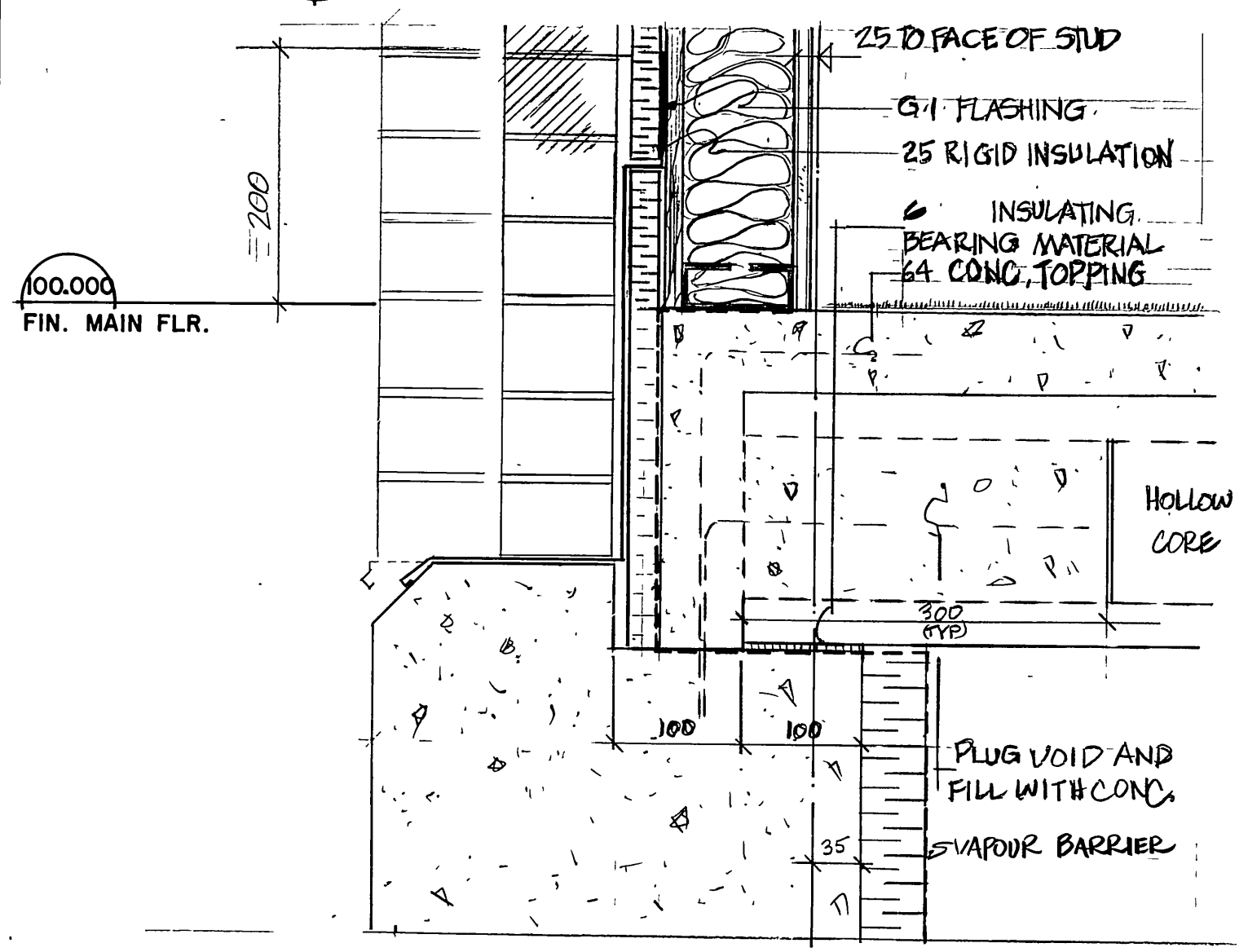


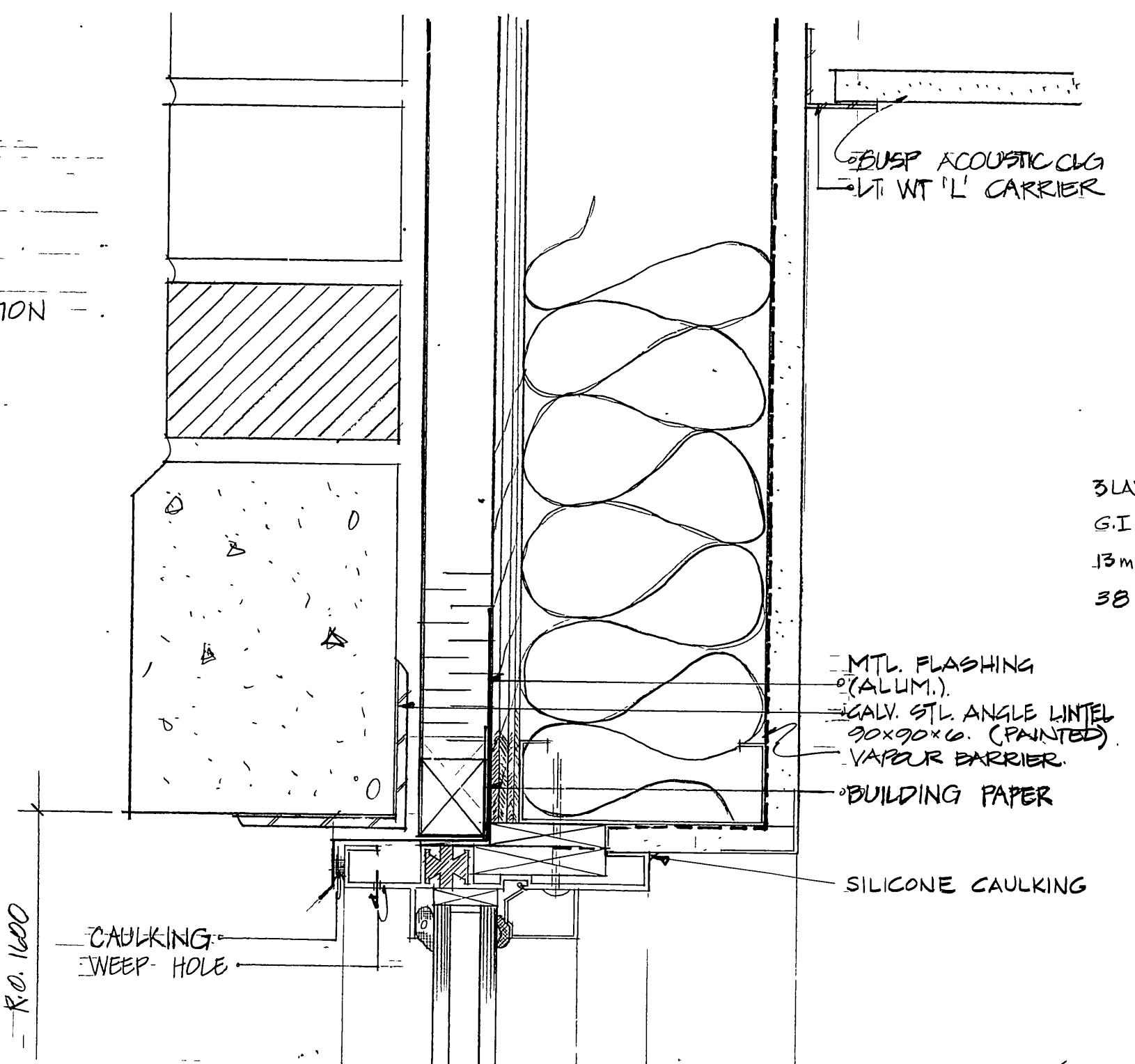
1 TYPICAL PARAPET DETAIL
105/108 1:5



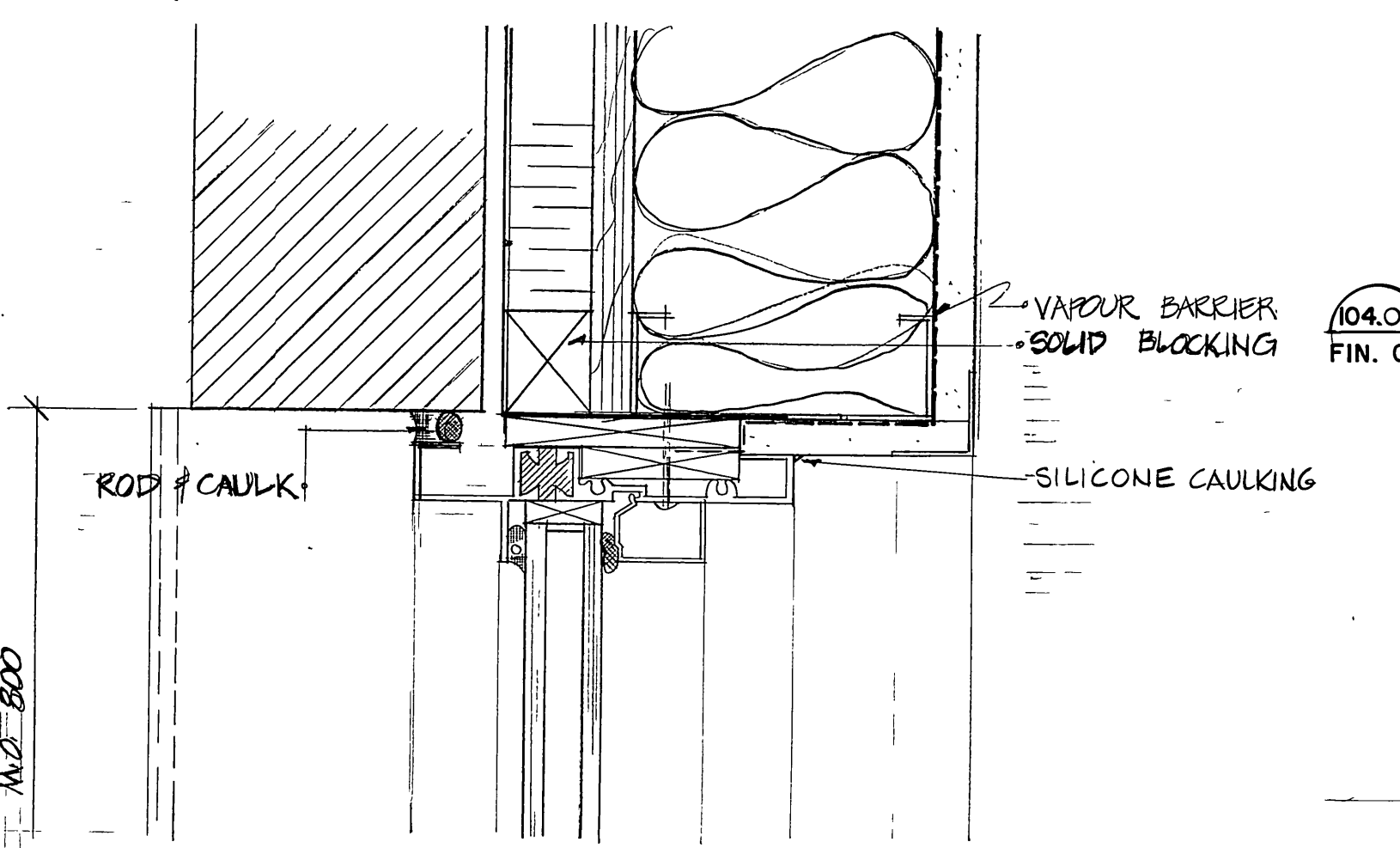
2 DETAIL AT SECOND FLOOR
105/108 1:5



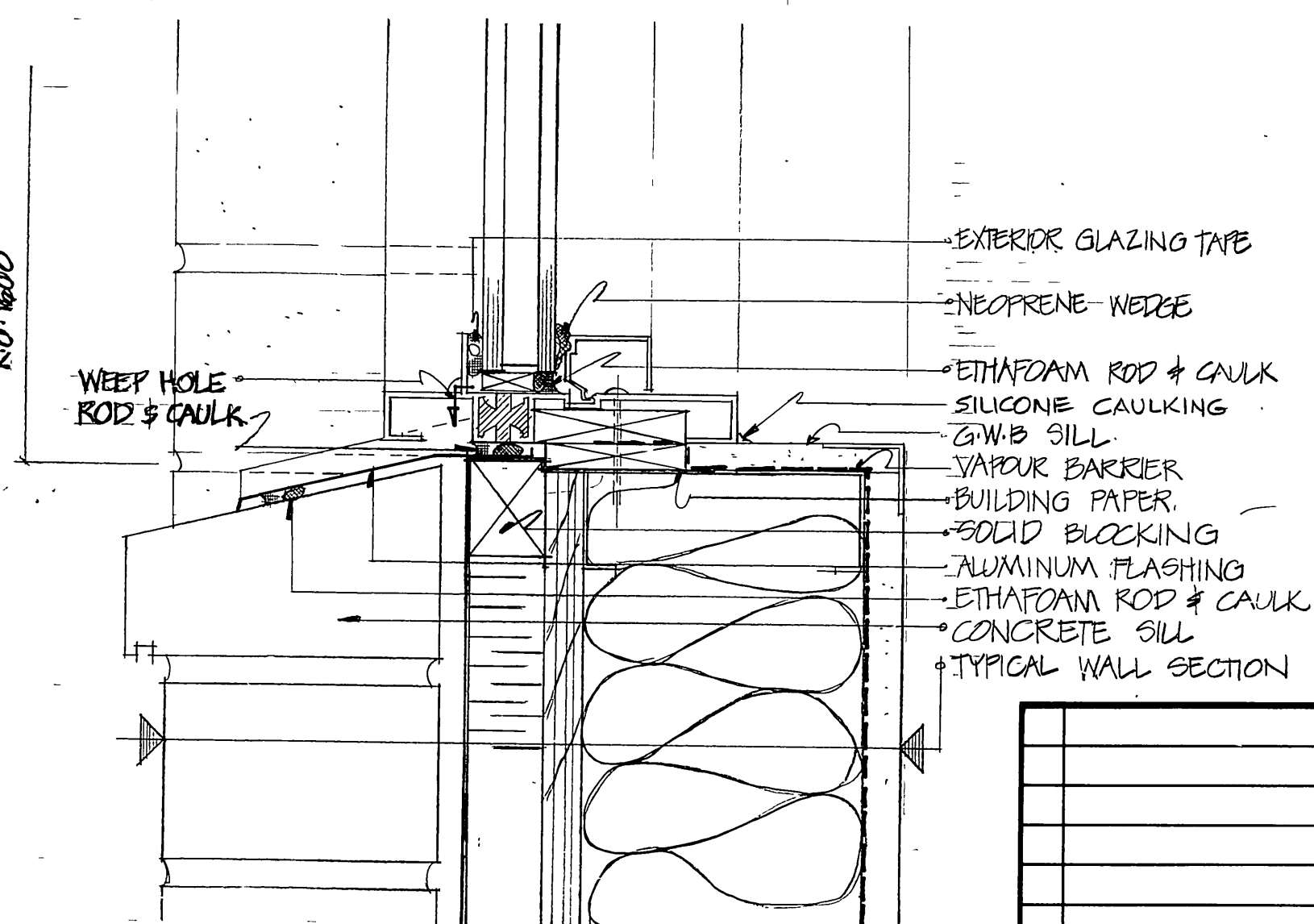
3 DETAIL AT MAIN FLOOR
105/108 1:5



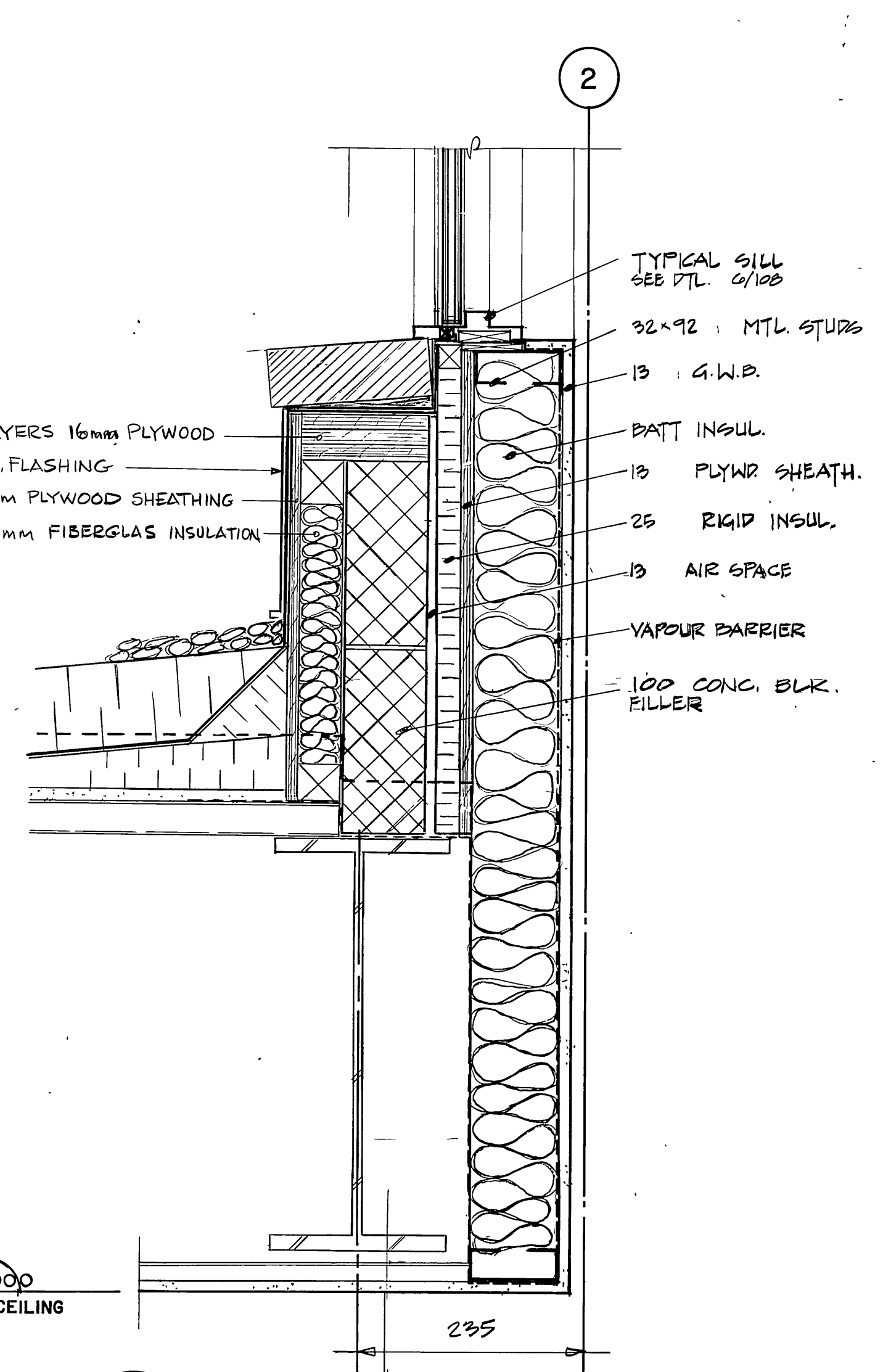
4 TYPICAL HEAD DETAIL
103/108 1:2



5 TYPICAL JAMB DETAIL
103/108 1:2



6 TYPICAL SILL DETAIL
103/108 1:2



7 SECTION AT STAIR HALL I
109/108 1:5

SHOP DRAWING REFERENCE		
DESCRIPTION	SUPPLIER	NUMBER
Precast Architectural Concrete	Genstar Structures	2280
Sealants	Grace	2286
Aluminum Doors & Windows	Border Glass	2288

REVISED AS CONSTRUCTED
DATE FEB. 14/84 BY CSA
CHECKED BY CALBIAN

MICROFILMED MAY 1984

METRIC
WHOLE NUMBERS INDICATE MILLIMETRES
DECIMALIZED NUMBERS INDICATE METRES

E. J. GABOURY AND ASSOCIATES
ARCHITECTS AND URBAN DESIGNERS

	W. L. WARDROP & ASSOCIATES LTD. MacLAREN ENGINEERS, PLANNERS & SCIENTISTS INC.		<p>THE CITY OF WINNIPEG WORKS & OPERATIONS DIVISION WATERWORKS, WASTE & DISPOSAL DEPARTMENT</p>	NORTH END WATER POLLUTION CONTROL CENTRE SECONDARY TREATMENT EXPANSION MAIN BUILDING EXPANSION ARCHITECTURAL - WALL & WINDOW DETAILS	
	DESIGNED BY: D.C., E.J.G.	DRAWN BY: D.F.C. E		RELEASED FOR CONSTRUCTION DATE: 1982 05 07	
	CHECKED BY: D.C.	DATE: 82.03.19		SCALE: AS NOTED	DRAWING NO.: NEP 1014
	APPROVED BY: [Signature] DATE: Mar/82			NO. REVISIONS DATE APP.	

NR 11190