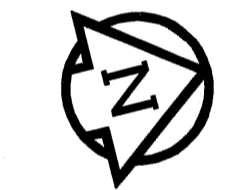
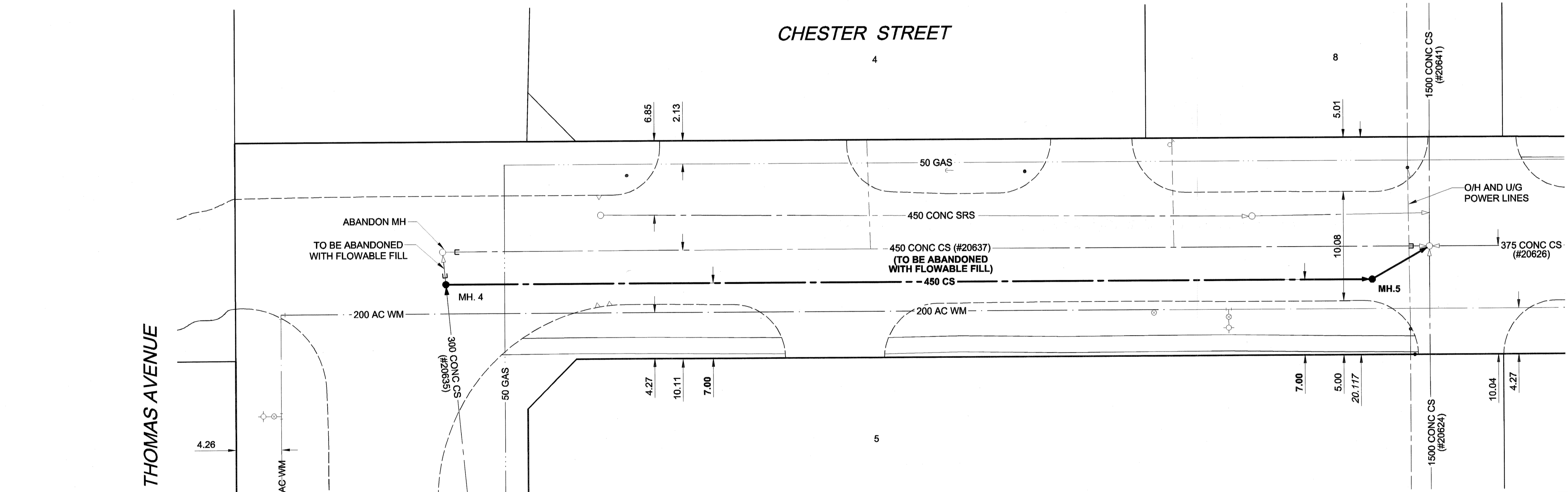
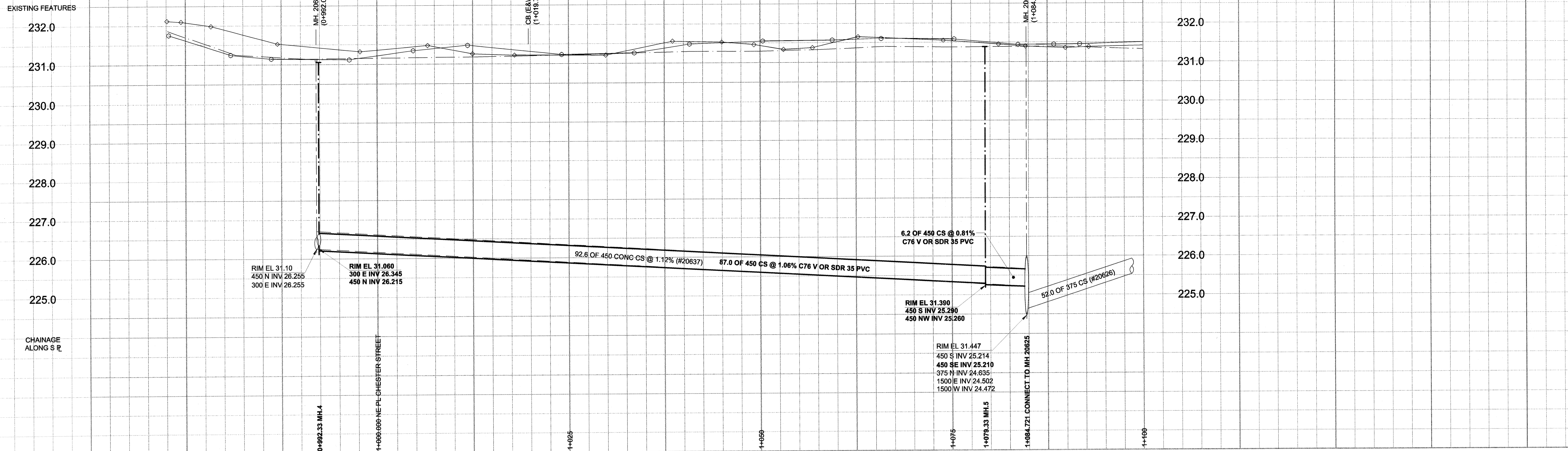


D SIZE 22" x 34" (560mm x 864mm)

PLOT: 05/10/14 1:59:13 PM

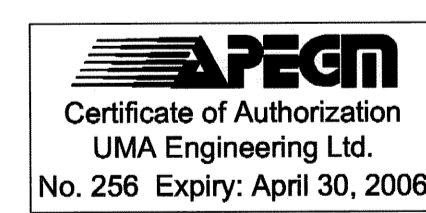
UMA FILE NAME: D265-195-03_02-C-0016_RX.dwg Saved By: lberard



SEWER SERVICE INFORMATION			
ADDRESS	PL TIE (SHORT/LONG)	JUNCTION TIE	REMARKS
4 CHESTER ST	26.21 SNPL	52.73 S OF 1ST MH S OF NAIRN	
5 CHESTER ST			NO SEWER INFOR FOUND
8 CHESTER ST	2.44 NSPL	24.23 S OF 1ST MH S OF NAIRN	
12 CHESTER ST	37.19 WEPL	47.24 W OF MH AT CHESTER	

- CONSTRUCTION NOTES**
- INSTALL NEW SEWER BY TRENCHLESS METHODS.
 - RENEW BUILDING CONNECTIONS TO PROPERTY LINE.
 - ALL SEWER & WATER SERVICES TO LOCATED IN THE FIELD BY THE CONTRACTOR.
 - SEWERS AND CB LEADS TO BE ABANDONED SHALL BE FILLED WITH CEMENT STABILIZED FLOWBLE FILL.
- BID OPPORTUNITY NO. 598-2005

WARNING
 IF POWER EQUIPMENT OR EXPLOSIVES ARE TO BE USED FOR EXCAVATION ON THIS PROJECT, THE CONTRACTOR MUST:
 1) NOTIFY THE GAS COMPANY OF THE PROPOSED LOCATION OF EXCAVATION.
 2) TAKE PRECAUTION TO AVOID DAMAGE TO GAS COMPANY INSTALLATIONS.
 SEE PROVINCIAL REGULATION 140/92 FOR DETAILS



150 mm WM	WATERMAIN	150 mm WM	150 mm WM	CURB STOP	150 mm WM	WATERMAIN	150 mm WM
	HYDRANT					HYDRANT	
	LAND DRAINAGE SEWER					LAND DRAINAGE SEWER	
	CATCH BASIN					PAVEMENT CROWN	
	CURB INLET					N/W PROPERTY LINE	
	PIPE ABANDONMENTS					S/E PROPERTY LINE	
	SURVEY BAR					S/E PROPERTY LINE	
	LEGEND - PLAN					S/E PROPERTY LINE	

LOCATION APPROVED
 UNDERGROUND STRUCTURES

DATE COMMITTEE

NOTE:
 LOCATION OF UNDERGROUND STRUCTURES AS SHOWN ARE BASED ON THE BEST INFORMATION AVAILABLE. BUT NO GUARANTEE IS GIVEN THAT ALL EXISTING UTILITIES ARE SHOWN OR THAT THE GIVEN LOCATIONS ARE EXACT. CONFIRMATION OF EXISTENCE AND EXACT LOCATION OF ALL SERVICES MUST BE OBTAINED FROM THE INDIVIDUAL UTILITIES BEFORE PROCEEDING WITH CONSTRUCTION.

NO.	REVISIONS	DATE	BY
0	ISSUED FOR CONSTRUCTION	05/10/14	KMB

DESIGNED BY	CHECKED BY
ALD / MJR	
DRAWN BY	APPROVED BY
KMB	
HOR. SCALE	RELEASED FOR CONSTRUCTION
1:250	
VERT. SCALE	DATE
1:50	05/10/14

UMA | AECOM
 © 2005 UMA ENGINEERING LTD. ALL RIGHTS RESERVED.

THE CITY OF WINNIPEG
WATER AND WASTE DEPARTMENT

2005 COMBINED SEWER RENEWALS
BY EXTERNAL POINT REPAIRS AND REPLACEMENTS
CONTRACT 17
CHESTER STREET
 MH AT THOMAS AVENUE
 TO 1ST MH N OF THOMAS AVENUE

SHEET 16 OF 21
 CITY DRAWING NUMBER
05682
 REV 0