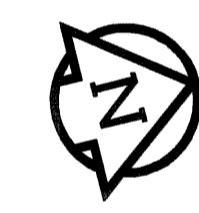
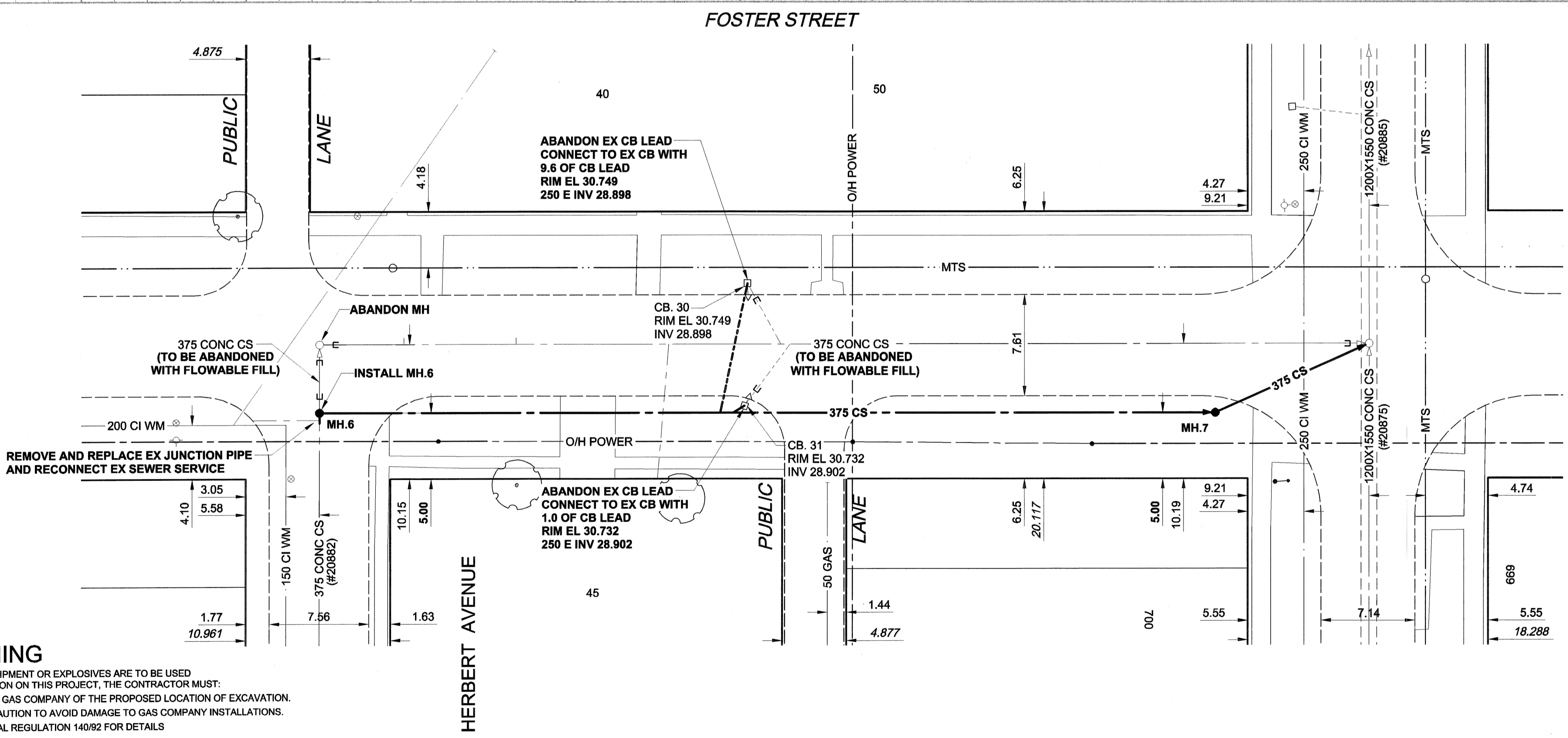
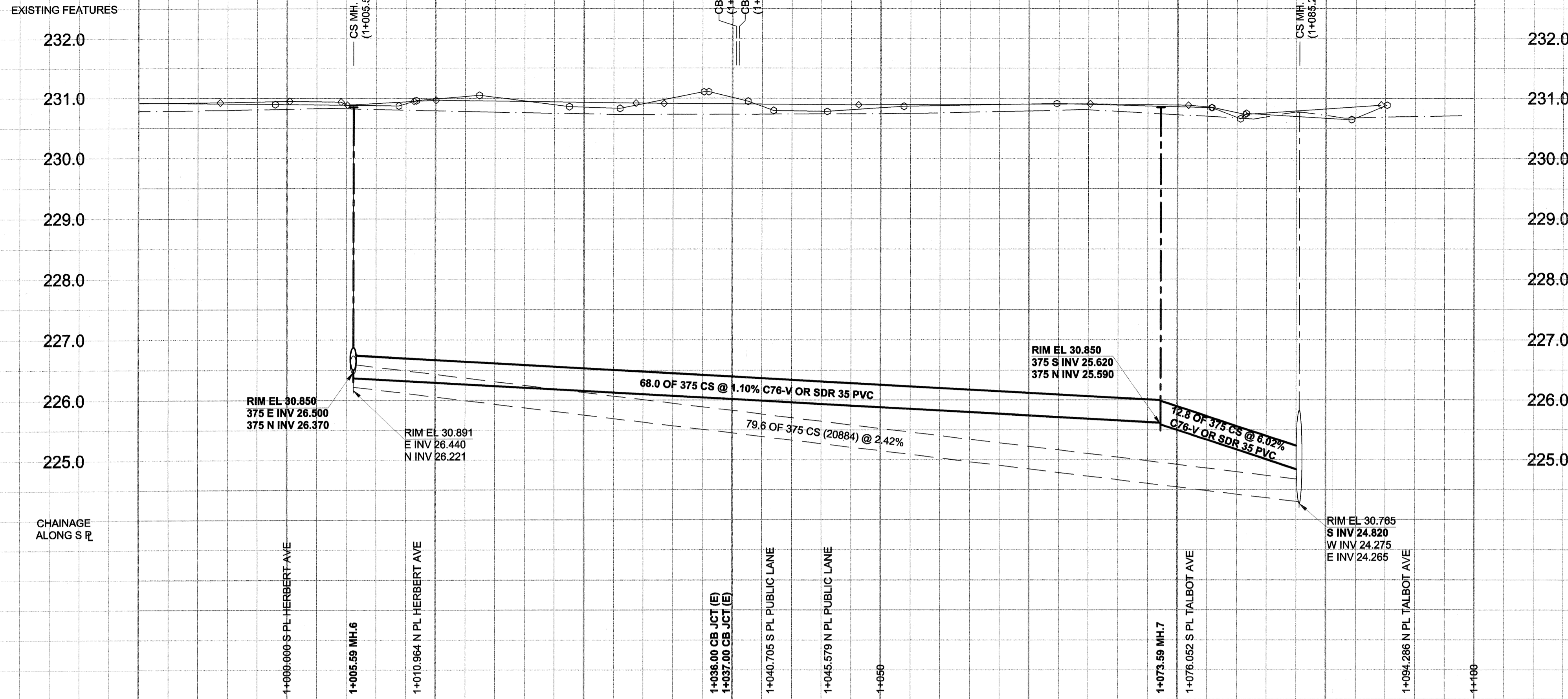


D SIZE 22" x 34" (559mm x 864mm)

PLOT: 05/10/14 1:32:41 PM

UMA FILE NAME: D265-195-03_02-C-0017_RX.dwg Saved By: kberard



SEWER JUNCTION INFORMATION*

REF. MH	DIST FROM REF. MH	SIZE	CLOCK AT
20883	6.40	1000	11
20883	14.90	1500	11
20883	26.50	1500	02
20883	35.00	2000	10
20883	35.70	2000	01

*JUNCTION INFORMATION FROM VIDEO INSPECTION

SEWER SERVICE INFORMATION

ADDRESS	PLTIE (SHORT/LONG)	JUNCTION TIE	REMARKS
40 FOSTER ST			NO SEWER INFO FOUND
45 FOSTER ST	20.27 NSPL	51.82 S OF MH AT TALBOT	
50 FOSTER ST	26.21	64.62 S OF MH AT TALBOT AVE	

WATER SERVICE INFORMATION

ADDRESS	DISTANCE TO PROPERTY	SHORT & LONG MEASUREMENT	REMARKS
40 FOSTER ST	4.27	SSL BLDG	WM 18.3 TO PL (COMMERCIAL)
45 FOSTER ST	41.76	NNL MCCALMAN AV	WM 7.9 TO PL (COMMERCIAL)
50 FOSTER ST	2.13	EWL BUILDING	WM 3.4 TO PL (COMMERCIAL)
50 FOSTER ST	4.27	SSL BLDG	WM 3.4 TO PL (COMMERCIAL)

- CONSTRUCTION NOTES**
- INSTALL NEW SEWER BY TRENCHLESS METHODS.
 - RENEW BUILDING CONNECTIONS TO PROPERTY LINE.
 - ALL SEWER & WATER SERVICES TO LOCATED IN THE FIELD BY THE CONTRACTOR.
 - SEWERS AND CB LEADS TO BE ABANDONED SHALL BE FILLED WITH CEMENT STABILIZED FLOWBLE FILL.

WARNING
 IF POWER EQUIPMENT OR EXPLOSIVES ARE TO BE USED FOR EXCAVATION ON THIS PROJECT, THE CONTRACTOR MUST: 1) NOTIFY THE GAS COMPANY OF THE PROPOSED LOCATION OF EXCAVATION. 2) TAKE PRECAUTION TO AVOID DAMAGE TO GAS COMPANY INSTALLATIONS. SEE PROVINCIAL REGULATION 140/92 FOR DETAILS.

150 mm WM	WATERMAIN	150 mm WM	CURB STOP	150 mm WM	WATERMAIN	150 mm WM
	HYDRANT		REDUCER		HYDRANT	
	VALVE		COUPLING		VALVE	
	LAND DRAINAGE SEWER		ANODE		LAND DRAINAGE SEWER	
	MANHOLE		HYDRO		WASTE WATER SEWER	
	CATCH BASIN		MTS		PAVEMENT CROWN	
	CURB INLET		GAS		NW PROPERTY LINE	
	CULVERT		TESTHOLE		S/E PROPERTY LINE	
	PIPE ABANDONMENTS		LAMP STANDARD		S/E GUTTER	
	SURVEY BAR		TREE			
	EXISTING		LEGEND - PLAN		LEGEND - PROFILE	

LOCATION APPROVED UNDERGROUND STRUCTURES

SUPR. U/G STRUCTURES DATE COMMITTEE

NOTE: LOCATION OF UNDERGROUND STRUCTURES AS SHOWN ARE BASED ON THE BEST INFORMATION AVAILABLE. BUT NO GUARANTEE IS GIVEN THAT ALL EXISTING UTILITIES ARE SHOWN OR THAT THE GIVEN LOCATIONS ARE EXACT. CONFIRMATION OF EXISTENCE AND EXACT LOCATION OF ALL SERVICES MUST BE OBTAINED FROM THE INDIVIDUAL UTILITIES BEFORE PROCEEDING WITH CONSTRUCTION.

UMA 28-002 Bolt In 13.4 m Conc. pile, 2.3 m S. of N.L. of Talbot Ave., & 0.1 m W. of W.L. of Foster St.

NO.	ISSUED FOR CONSTRUCTION	DATE	BY
0	ISSUED FOR CONSTRUCTION	05/10/14	KMB
	NO. REVISIONS	YYMMDD	BY

UMA | AECOM

© 2005 UMA ENGINEERING LTD. ALL RIGHTS RESERVED.

DESIGNED BY	ALD	CHECKED BY	[Signature]
DRAWN BY	KMB	APPROVED BY	[Signature]
HOR. SCALE	1:250	RELEASED FOR CONSTRUCTION	[Signature]
VERT. SCALE	1:50	DATE	Oct 14, 2005

APECM
 Certificate of Authorization
 UMA Engineering Ltd.
 No. 256 Expiry: April 30, 2006

PROFESSIONAL'S SEAL
 PROVINCE OF MANITOBA
 A. NAGY
 REGISTERED PROFESSIONAL ENGINEER
 CONSULTANT DRAWING NO. 17
 D265-195-03

THE CITY OF WINNIPEG WATER AND WASTE DEPARTMENT

2005 COMBINED SEWER RENEWALS BY EXTERNAL POINT REPAIRS AND REPLACEMENTS CONTRACT 17

FOSTER STREET
 MH AT HERBERT AVENUE TO MH AT TALBOT AVENUE

SHEET 17 OF 21
 CITY DRAWING NUMBER
05683 REV 0

BID OPPORTUNITY NO. 598-2005