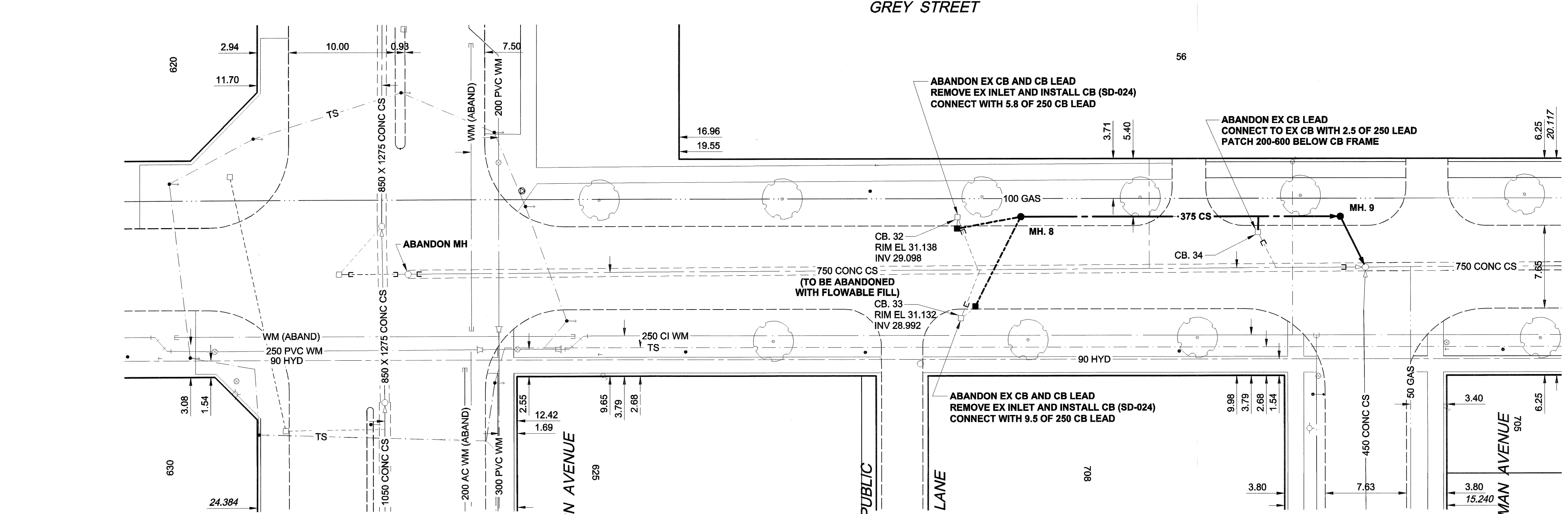
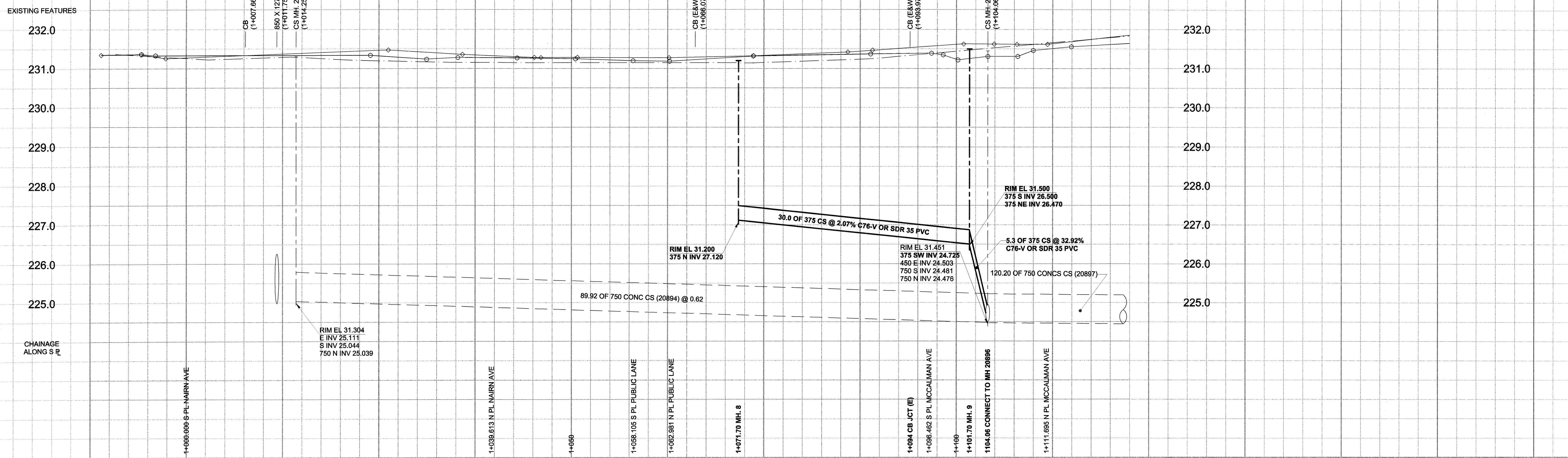


D SIZE 22" x 34" (559mm x 864mm)

PLOT: 05/10/14 1:50:58 PM

UMA FILE NAME: D265-195-03_02-C-0018_RX.dwg Saved By: kberard



SEWER JUNCTION INFORMATION*

REF. MH	DIST FROM	SIZE	CLOCK AT
20896	8.40	250Ø	02
20896	20.30	150Ø	01

*JUNCTION INFORMATION FROM VIDEO INSPECTION

WATER SERVICE INFORMATION

ADDRESS	DISTANCE SHORT & LONG	PROPERTY MEASUREMENT	REMARKS
56 GREY ST	23.47	S/NL OF BLDG	
(COMMERCIAL)	33.22	NNL NAIRN AVE	

SEWER SERVICE INFORMATION

ADDRESS	PL TIE	JUNCTION TIE	REMARKS
56 GREY ST	57.30 NSPL	21.03 S OF MH AT MCCALMAN AVE	

- CONSTRUCTION NOTES**
- INSTALL NEW SEWER BY TRENCHLESS METHODS.
 - RENEW BUILDING CONNECTIONS TO PROPERTY LINE.
 - ALL SEWER & WATER SERVICES TO LOCATED IN THE FIELD BY THE CONTRACTOR.
 - SEWERS AND CB LEADS TO BE ABANDONED SHALL BE FILLED WITH CEMENT STABILIZED FLOWBLE FILL.

BID OPPORTUNITY NO. 598-2005

WARNING
 IF POWER EQUIPMENT OR EXPLOSIVES ARE TO BE USED FOR EXCAVATION ON THIS PROJECT, THE CONTRACTOR MUST:
 1) NOTIFY THE GAS COMPANY OF THE PROPOSED LOCATION OF EXCAVATION.
 2) TAKE PRECAUTION TO AVOID DAMAGE TO GAS COMPANY INSTALLATIONS.
 SEE PROVINCIAL REGULATION 140/92 FOR DETAILS

EXISTING	LEGEND - PLAN	NEW	EXISTING	LEGEND - PLAN	NEW	EXISTING	LEGEND - PROFILE	NEW
	WATERMAIN			CURB STOP		WATERMAIN		150 mm WM
	VALVE			REDUCER		VALVE		VALVE
	LAND DRAINAGE SEWER			COUPLING		LAND DRAINAGE SEWER		300 mm LDS
	WASTE WATER SEWER			ANODE		WASTE WATER SEWER		250 mm WWS
	MANHOLE			HYDRO		MANHOLE		MANHOLE
	CATCH BASIN			MTS		CATCH BASIN		CATCH BASIN
	CURB INLET			GAS		CURB INLET		CURB INLET
	CULVERT			TESTHOLE		CULVERT		CULVERT
	PIPE ABANDONMENTS			LAMP STANDARD		PIPE ABANDONMENTS		PIPE ABANDONMENTS
	SURVEY BAR			TREE		SURVEY BAR		SURVEY BAR

LOCATION APPROVED
 UNDERGROUND STRUCTURES

DATE: 05/10/14
 COMMITTEE: KMB

NOTE:
 LOCATION OF UNDERGROUND STRUCTURES AS SHOWN ARE BASED ON THE BEST INFORMATION AVAILABLE. BUT NO GUARANTEE IS GIVEN THAT ALL EXISTING UTILITIES ARE SHOWN OR THAT THE GIVEN LOCATIONS ARE EXACT. CONFIRMATION OF EXISTENCE AND EXACT LOCATION OF ALL SERVICES MUST BE OBTAINED FROM THE INDIVIDUAL UTILITIES BEFORE PROCEEDING WITH CONSTRUCTION.

UMA | AECOM

DESIGNED BY: ALD / MJR
 CHECKED BY: [Signature]
 DRAWN BY: KMB
 APPROVED BY: [Signature]
 HOR. SCALE: 1:250
 VERT. SCALE: 1:50
 DATE: 05/10/14

APECM
 Certificate of Authorization
 UMA Engineering Ltd.
 No. 256 Expiry: April 30, 2006

PROFESSIONAL'S SEAL
 PROVINCE OF MANITOBA
 A. NAGY
 REGISTERED PROFESSIONAL ENGINEER
 DATE: 08/14/2005

CONSULTANT DRAWING NO. 18
 D265-195-03

THE CITY OF WINNIPEG
 WATER AND WASTE DEPARTMENT

2005 COMBINED SEWER RENEWALS
 BY EXTERNAL POINT REPAIRS AND REPLACEMENTS
 CONTRACT 17
 GREY STREET
 MH AT NAIRN AVENUE
 TO MH AT MCCALMAN AVENUE

SHEET 18 OF 21
 CITY DRAWING NUMBER
05684
 REV 0