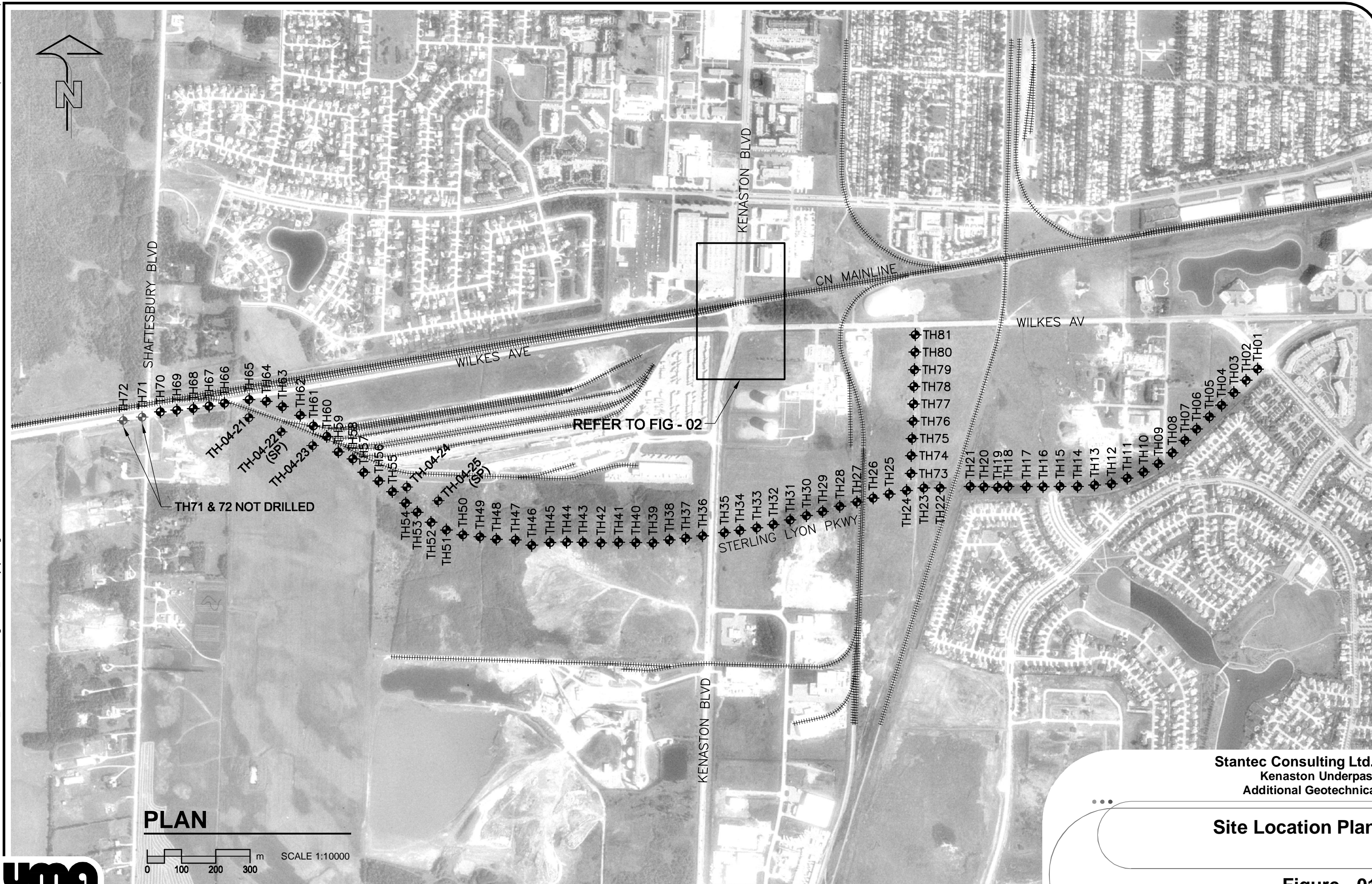


Geotechnical Report

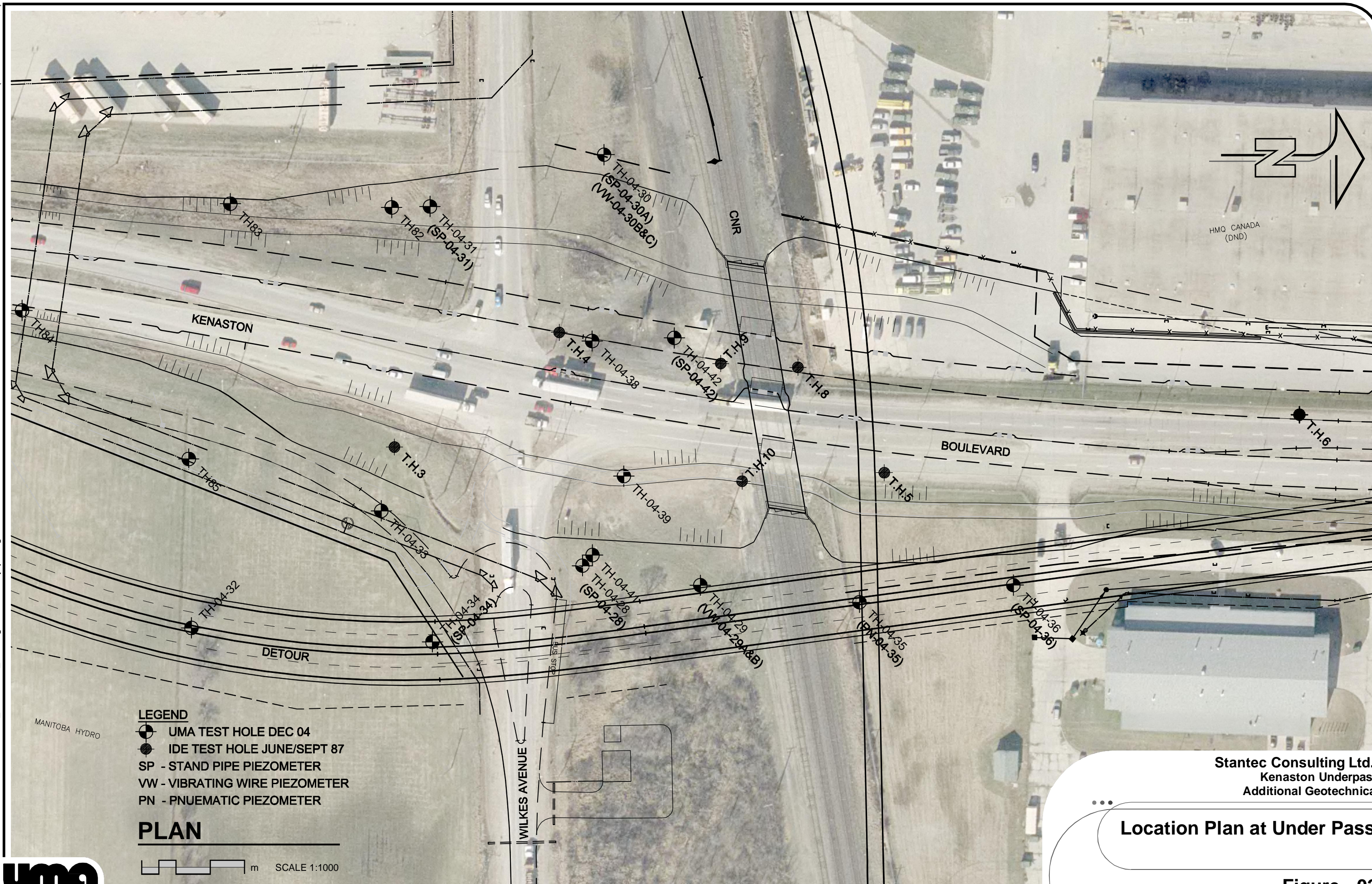
Figures



Stantec Consulting Ltd.
Kenaston Underpass
Additional Geotechnical

Site Location Plan

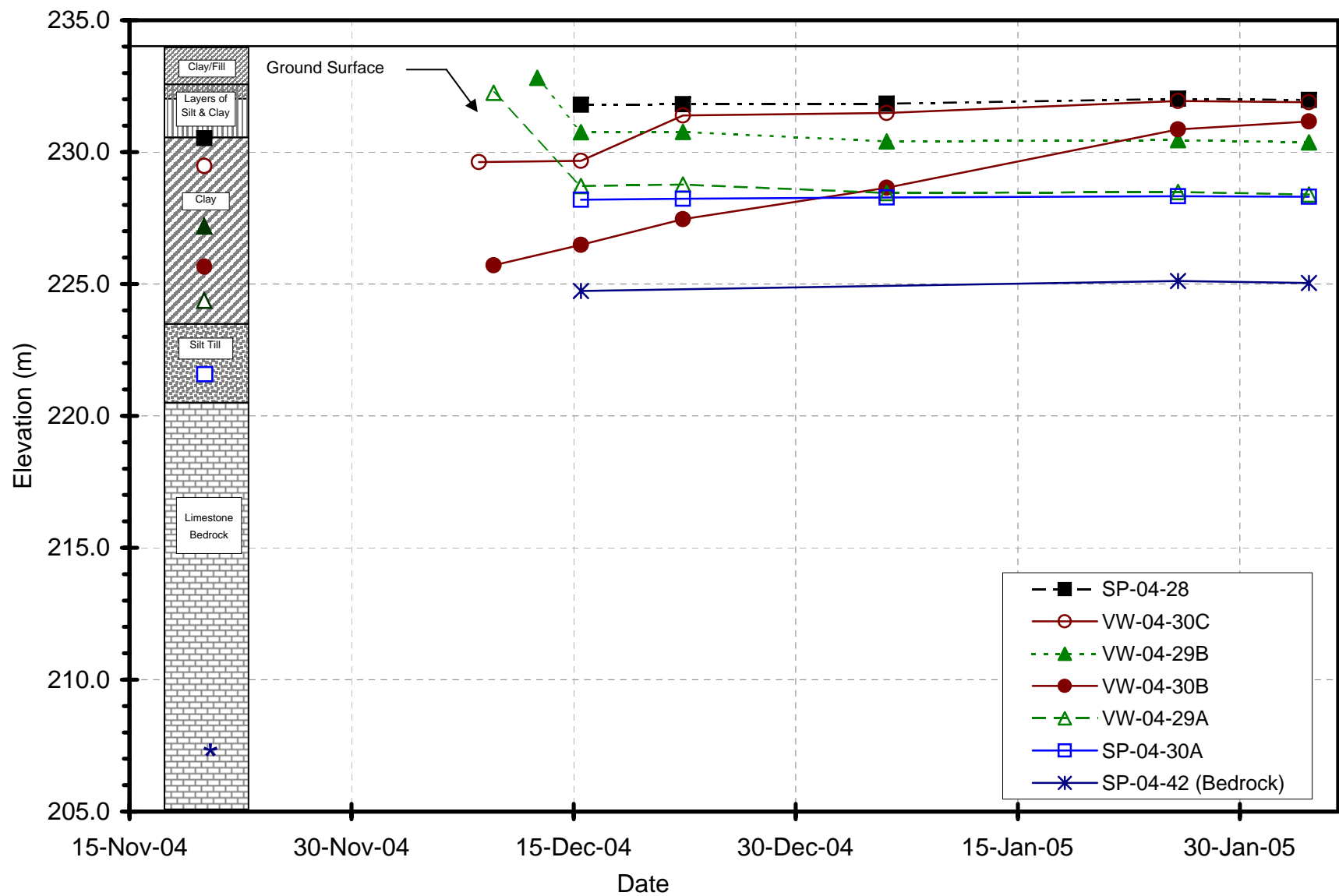
Figure - 01



Stantec Consulting Ltd.
Kenaston Underpass
Additional Geotechnical

Location Plan at Under Pass

Figure - 02



**Figure 3 - Piezometric Head vs. Time
Piezometers Near Brigde**

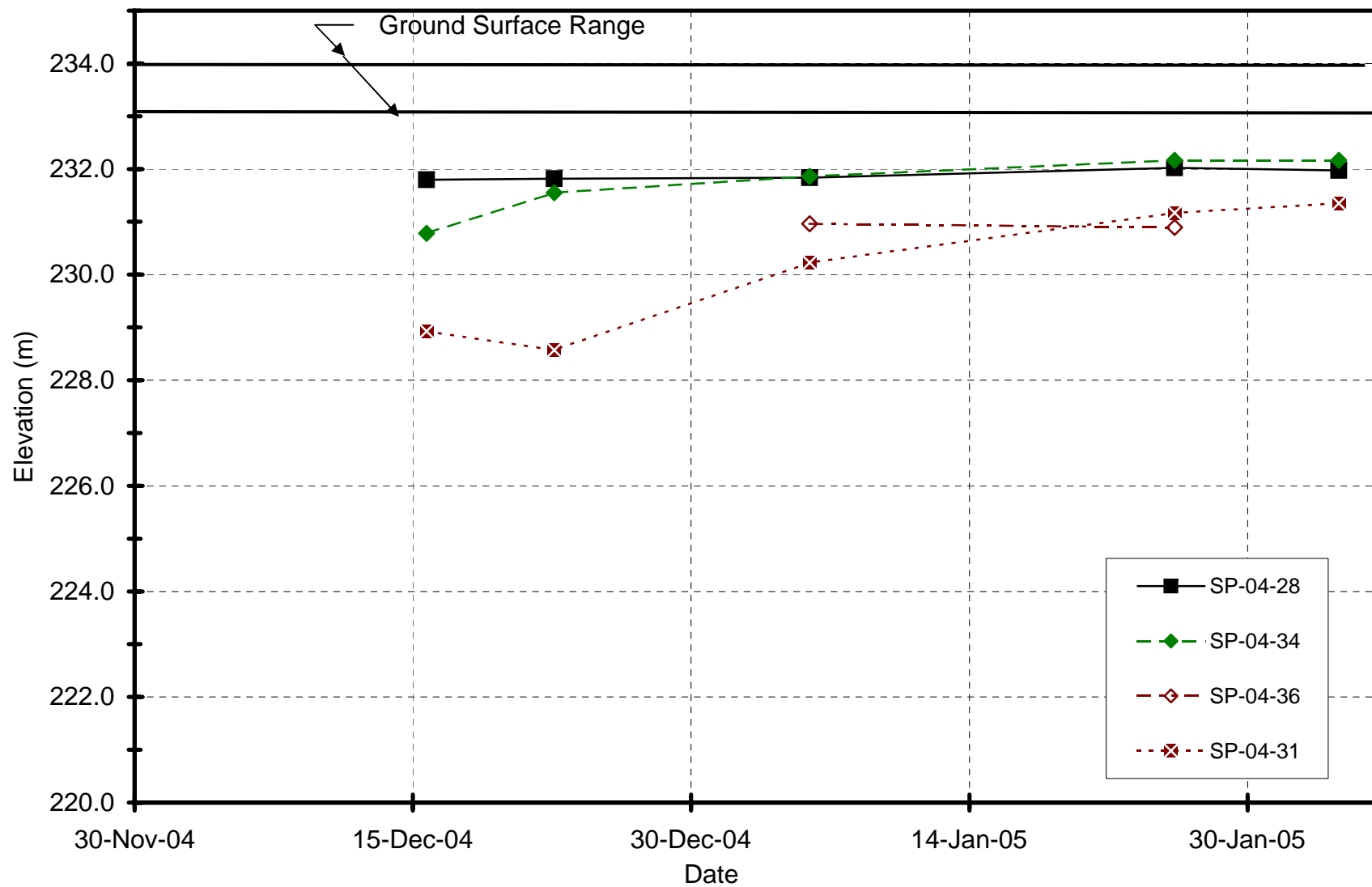


Figure 4 - Piezometric Head vs. Time
Shallow Piezometers

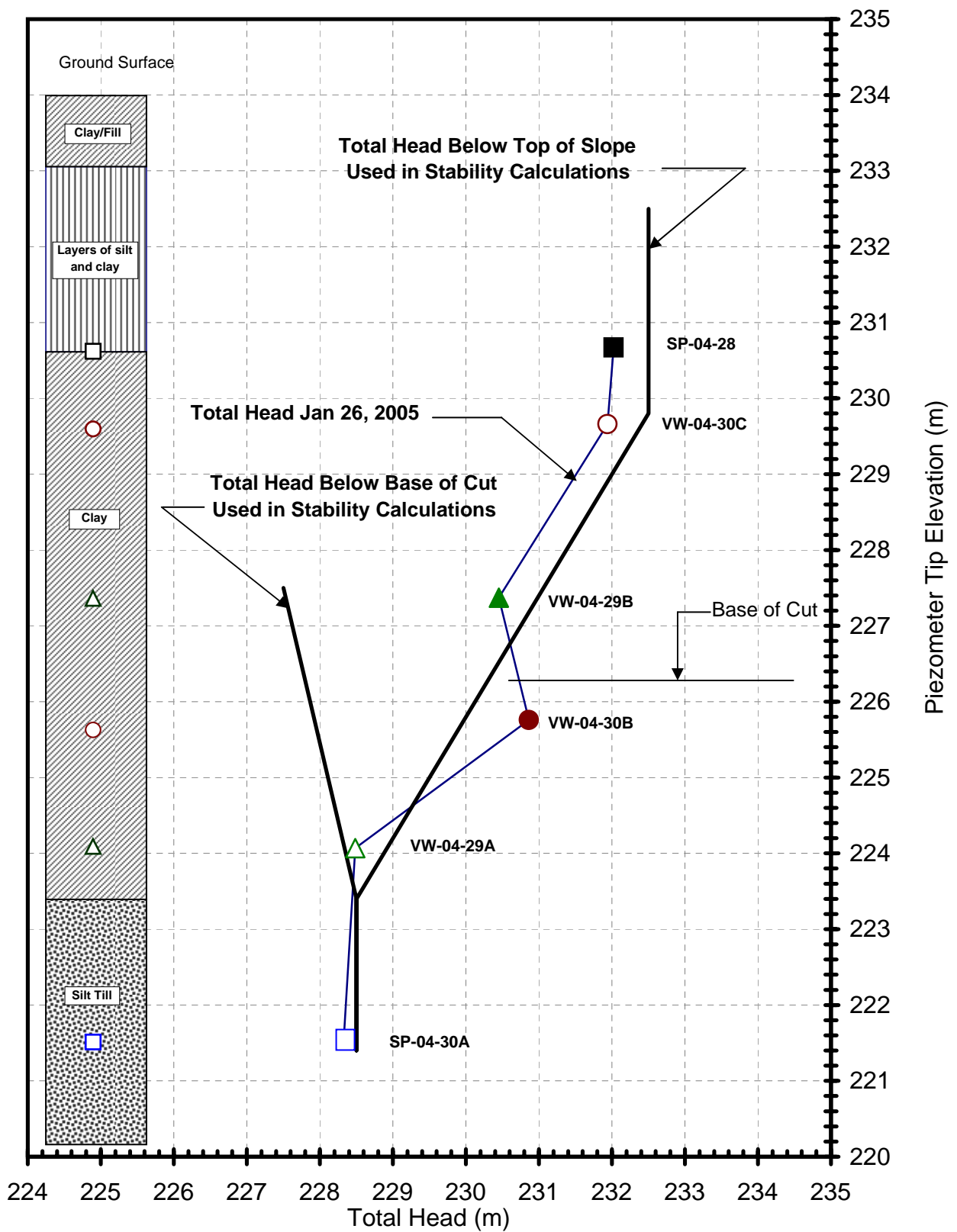


Figure 5 - Head Distribution for Stability Calculations

Title: Kenaston Underpass
 Comments: Groundwater at Winter 2005 Levels
 Name: 6.5 m cut, 5to1, 4 m bench 2.5 m fr bottom.gsz
 Date: 2/28/2005

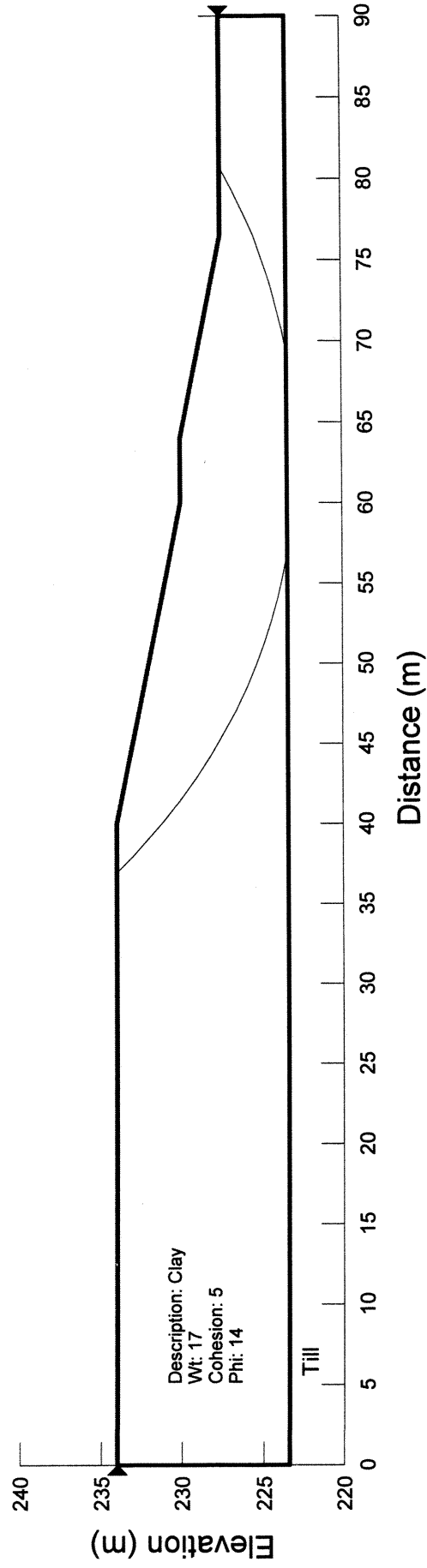
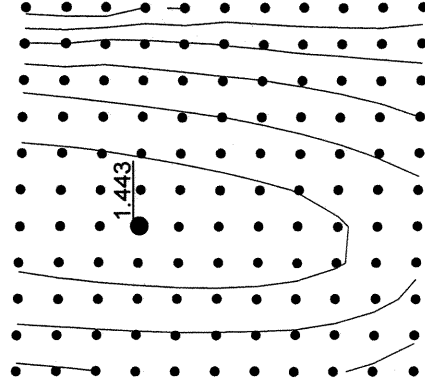


Figure 6 - Typical Slope Stability Output

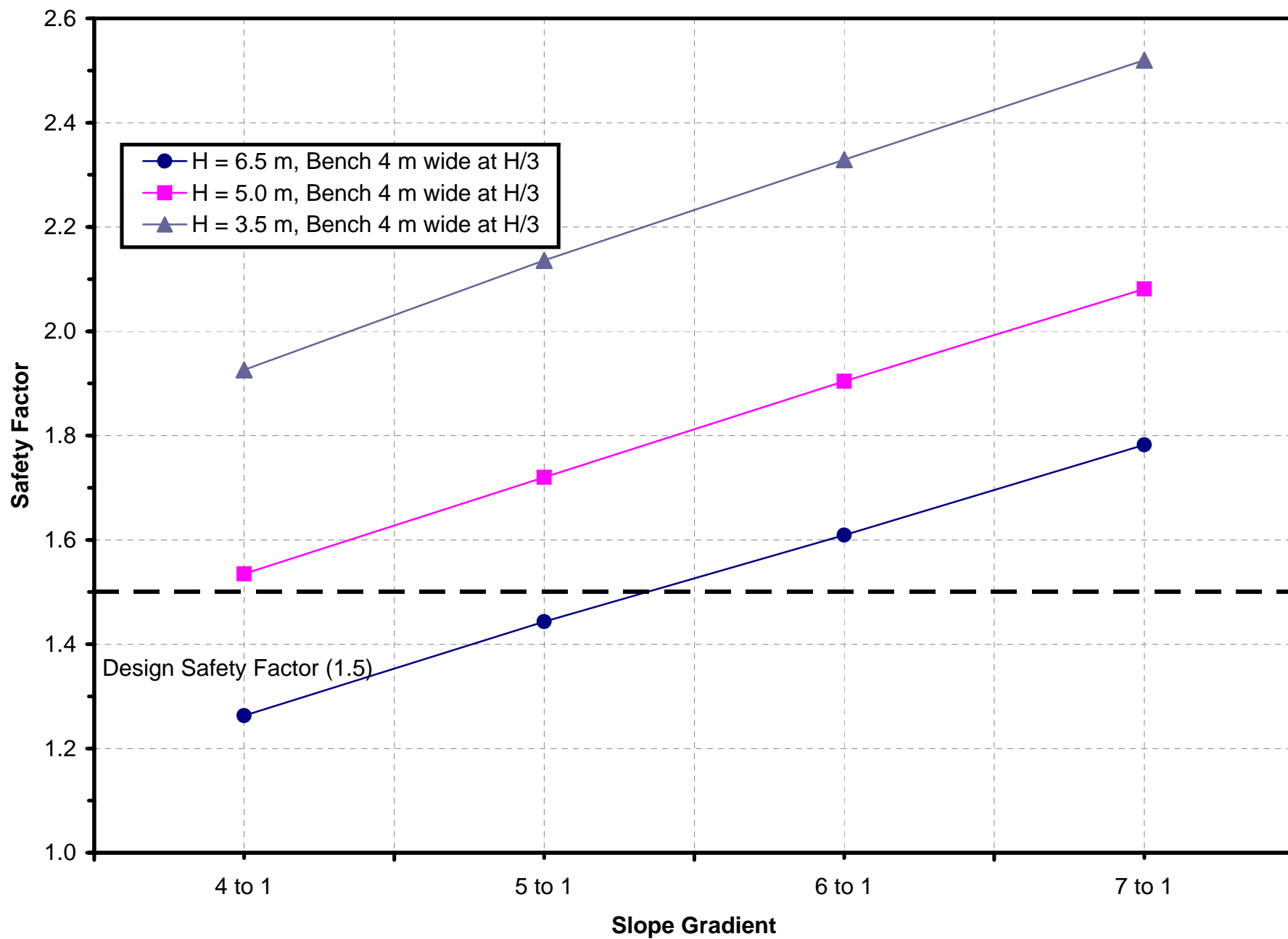
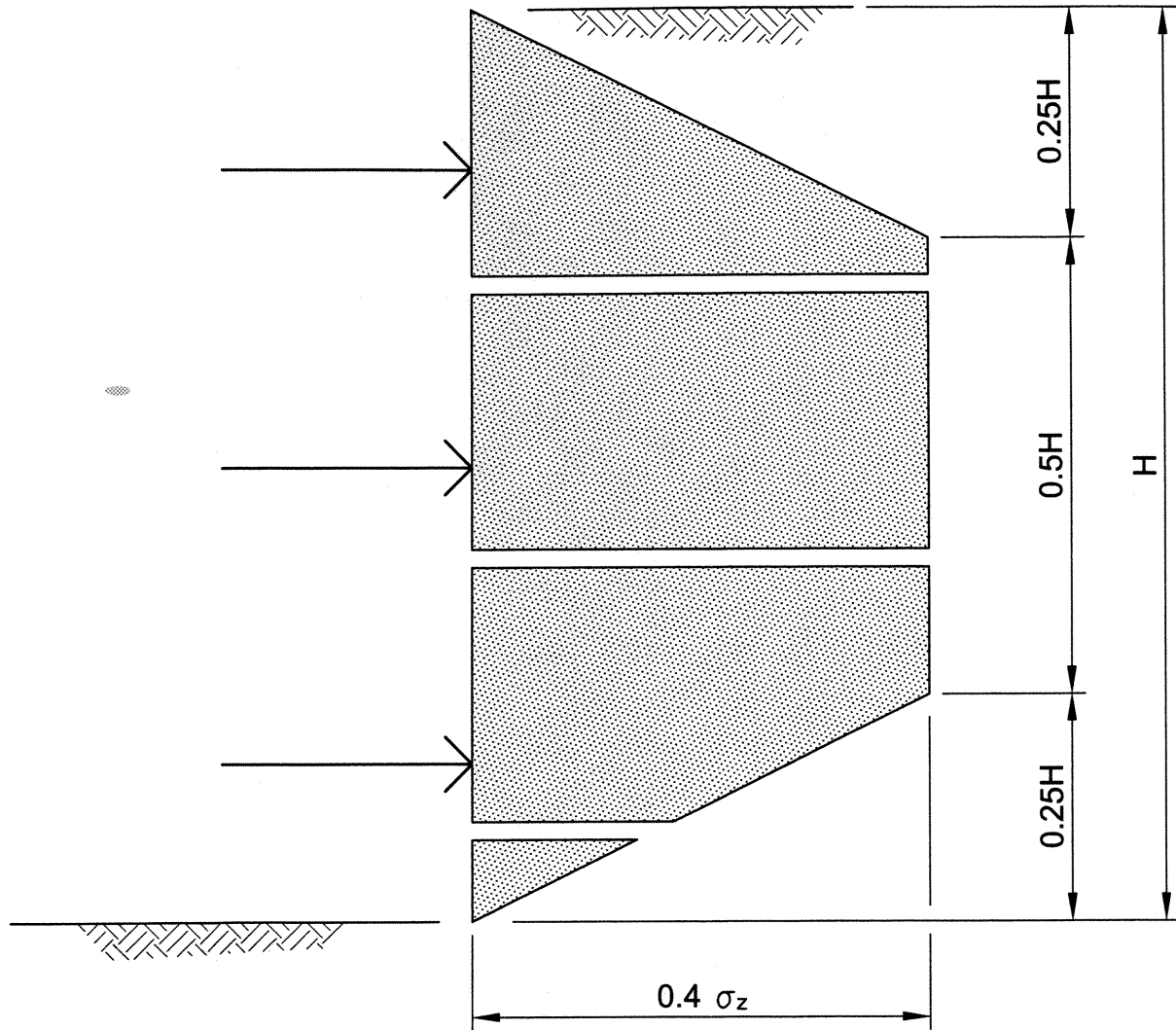


Figure 7 - Summary of Slope Stability Calculations



SOURCE: CANADIAN FOUNDATION ENGINEER MANUAL, 3rd EDITION.

Stantec Consulting Ltd.
Kenaston Underpass

...

**Apparent Earth Pressure Forces
on Supports for Strutted Walls**

Figure - 08