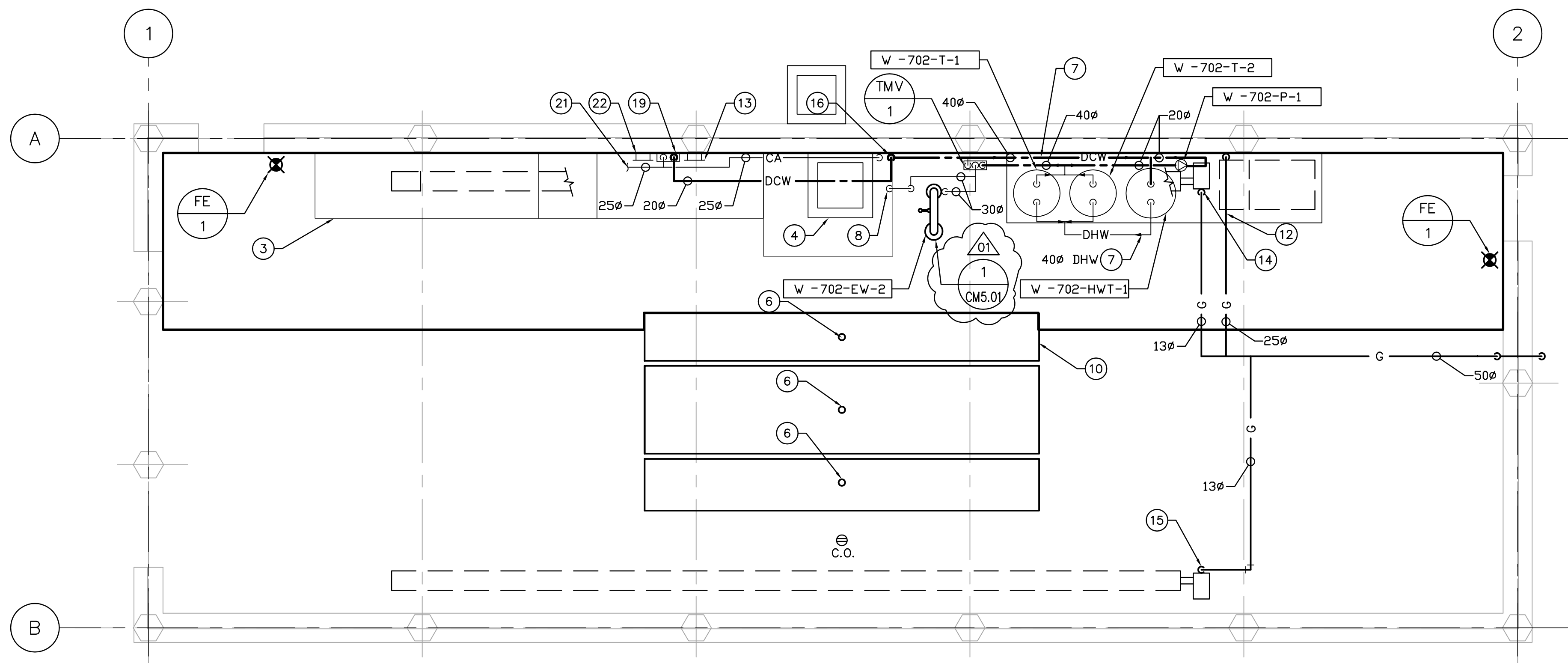


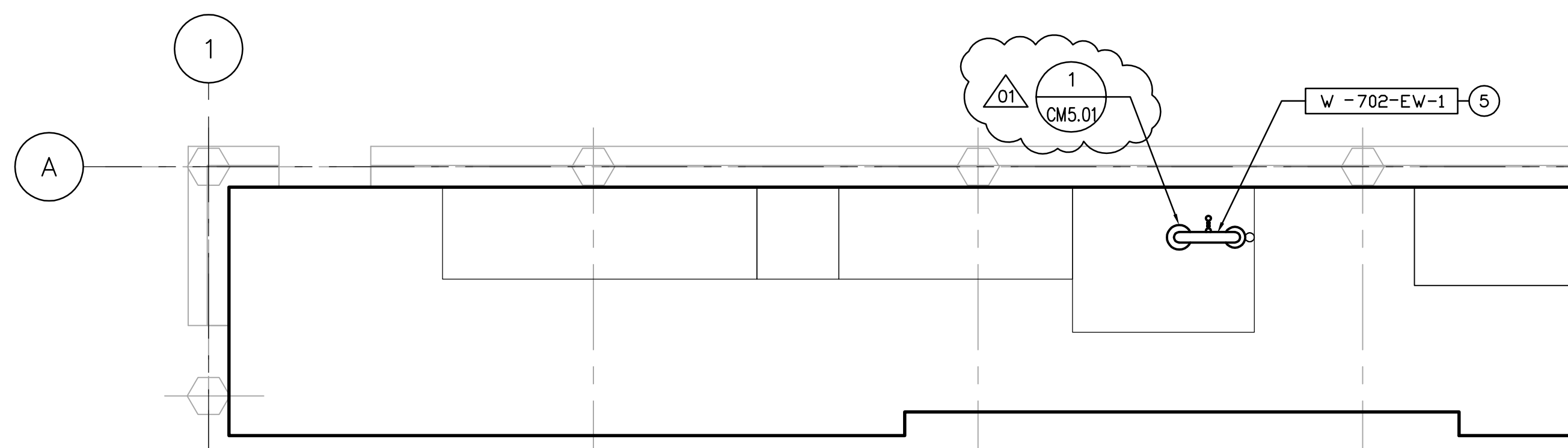
**PLUMBING PLAN - FOUNDATION LEVEL**

SCALE: 1:50



**PLUMBING PLAN - GROUND LEVEL**

SCALE: 1:50



**PLUMBING PLAN - PLATFORM LEVEL**

SCALE: 1:50



B.M. ELEV.					
DESIGNED BY	DC	CHECKED BY	AA		
DRAWN BY	LJW	APPROVED BY	D. TANIGUCHI		
SCALE:	1:50	RELEASED FOR CONSTRUCTION BY:	K. MARTENS		
NO. REVISIONS	DATE	BY	DATE	2005/09/21	DATE 05/12/02



ENGINEER'S SEAL

ORIGINAL SIGNED BY

P. TATARYN

2005/12/02

CONSULTANT DRAWING NO.

CM1.01

**DRAWING NOTES**

- 1 100 $\phi$  SANITARY DRAIN TO CHEMICAL STORAGE BUILDING SUMP PIT. RUN IN TRENCH BELOW FROST LINE. REFER TO CIVIL DRAWINGS.
- 2 40 $\phi$  DCW MAIN FROM SLUDGE, DEWATERING BUILDING. RUN IN TRENCH BELOW FROST LINE. REFER TO CIVIL DRAWINGS FOR UNDERGROUND PIPE & BUILDING ENTRY LOCATION. REFER TO WATER ENTRY DETAIL.
- 3 OUTLINE OF STAIRS AND PLATFORM.
- 4 GRIT INTERCEPTOR. REFER TO STRUCTURAL DRAWINGS.
- 5 COMBINATION EYEWASH AND SHOWER STATION ON PLATFORM LEVEL.
- 6 CONNECT SANITARY TO RAIL CONTAINMENT PANS. REFER TO DRAWING CM5.02 FOR ROUTING SANITARY BETWEEN RAIL TIES.
- 7 HEAT TRACE AND INSULATE ALL WATER PIPING. REFER TO SPECIFICATIONS.
- 8 40 $\phi$  TEMPERED WATER LINE RISING TO W-702-3 ON PLATFORM.
- 9 RUN NATURAL GAS SERVICE BELOW GRADE FROM CHEMICAL STORAGE BUILDING. REFER TO CIVIL FOR UNDERGROUND LOCATION.
- 10 RAIL CONTAINMENT PANS TO DRAIN INTO GRIT INTERCEPTOR. (SEE DETAIL)
- 11 PRV LOCATED AT HIGH LEVEL. VENT PIPE THROUGH ROOF c/w PITCH POCKET.
- 12 NG BRANCH SERVING W-MAU-790.
- 13 HOSE & REEL FOR COMPRESSED AIR SERVICE.
- 14 NG BRANCH SERVING W-RH-792.
- 15 NG BRANCH SERVING W-RH-793.
- 16 40 $\phi$  DCW MAIN TO RISE TO W-HWT-1 AND W-MV-1.
- 17 TRUCK CHEMICAL UNLOADING SPILL CONTAINMENT PIT. TO DRAIN & TIE INTO 100 $\phi$  SANITARY LINE BELOW REFER TO STRUCTURAL FOR PIT LOCATION.
- 18 25 $\phi$  COMPRESSED AIR LINE.
- 19 COMPRESSED AIR & WATER UTILITY STATION. REFER TO CM5.02 FOR DETAILS & STANDARDS.
- 20 UNDERGROUND GAS LINE. REFER TO CIVIL.
- 21 SEE PROCESS DRAWINGS FOR CONTINUATION.
- 22 HOSE REEL FOR TIE-IN TO DCW OF UTILITY STATION.

**GENERAL NOTES**

1. COORDINATE WITH OTHER TRADES SO AS TO PREVENT CONFLICTS.
2. PROVIDE HOUSEKEEPING PADS UNDER ALL FLOOR MOUNTED AIR HANDLING EQUIPMENT, PUMPS & TANKS. COORDINATE WITH STRUCTURAL FOR PAD HEIGHT.
3. ALL DUCTWORK SHALL BE SUPPORTED AND SUSPENDED AS PER SPECIFICATIONS AND LOCAL CODES. (SEE DETAILS)



NEWPCC CENTRATE NUTRIENT TREATMENT PHOSPHORUS REMOVAL FACILITY CONTRACT No. 1

CITY FILE NUMBER

SHEET OF

MECHANICAL RAILCAR SHELTER PLUMBING PLAN

CITY DRAWING NUMBER

1-010F-A-M0001-001-01-D