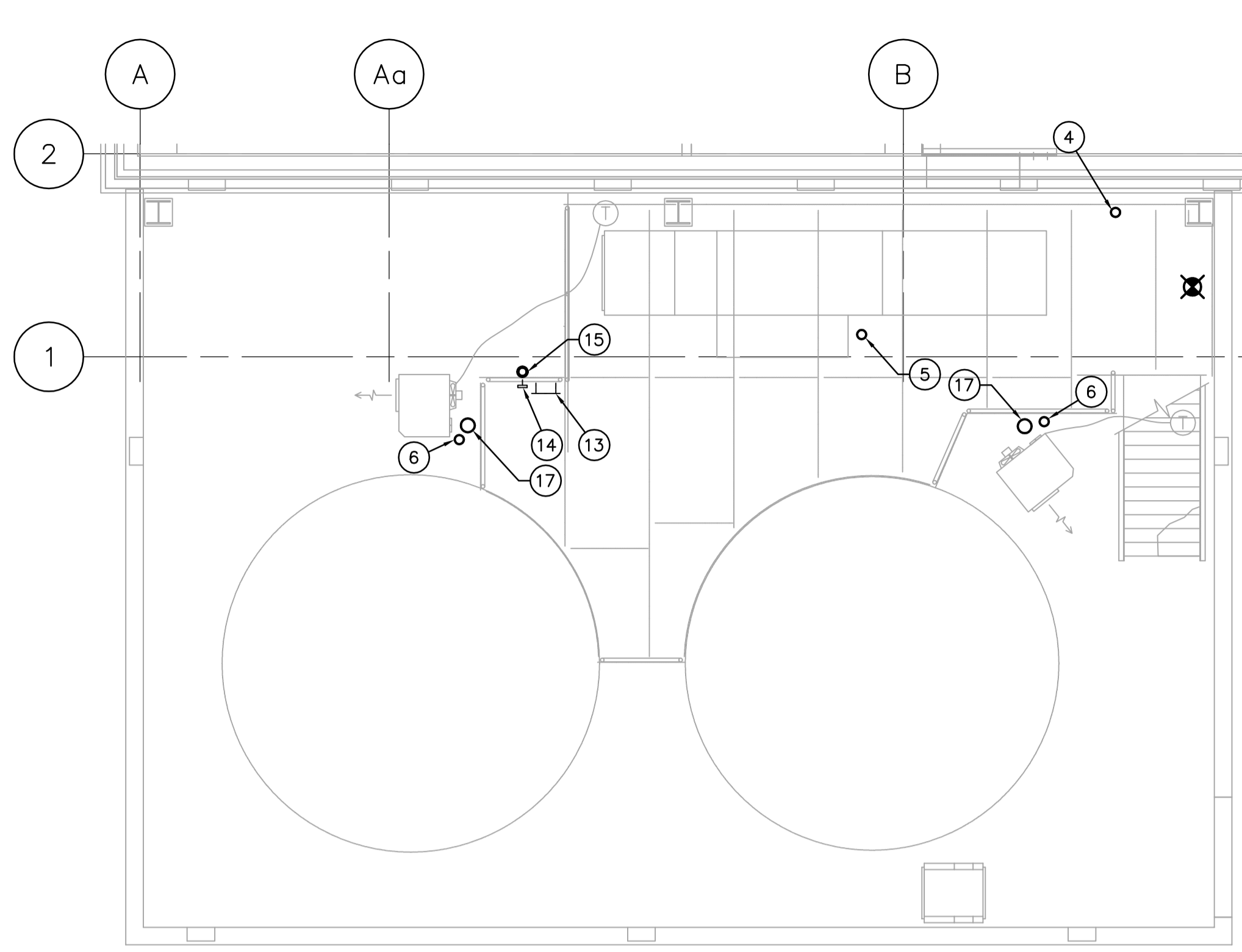
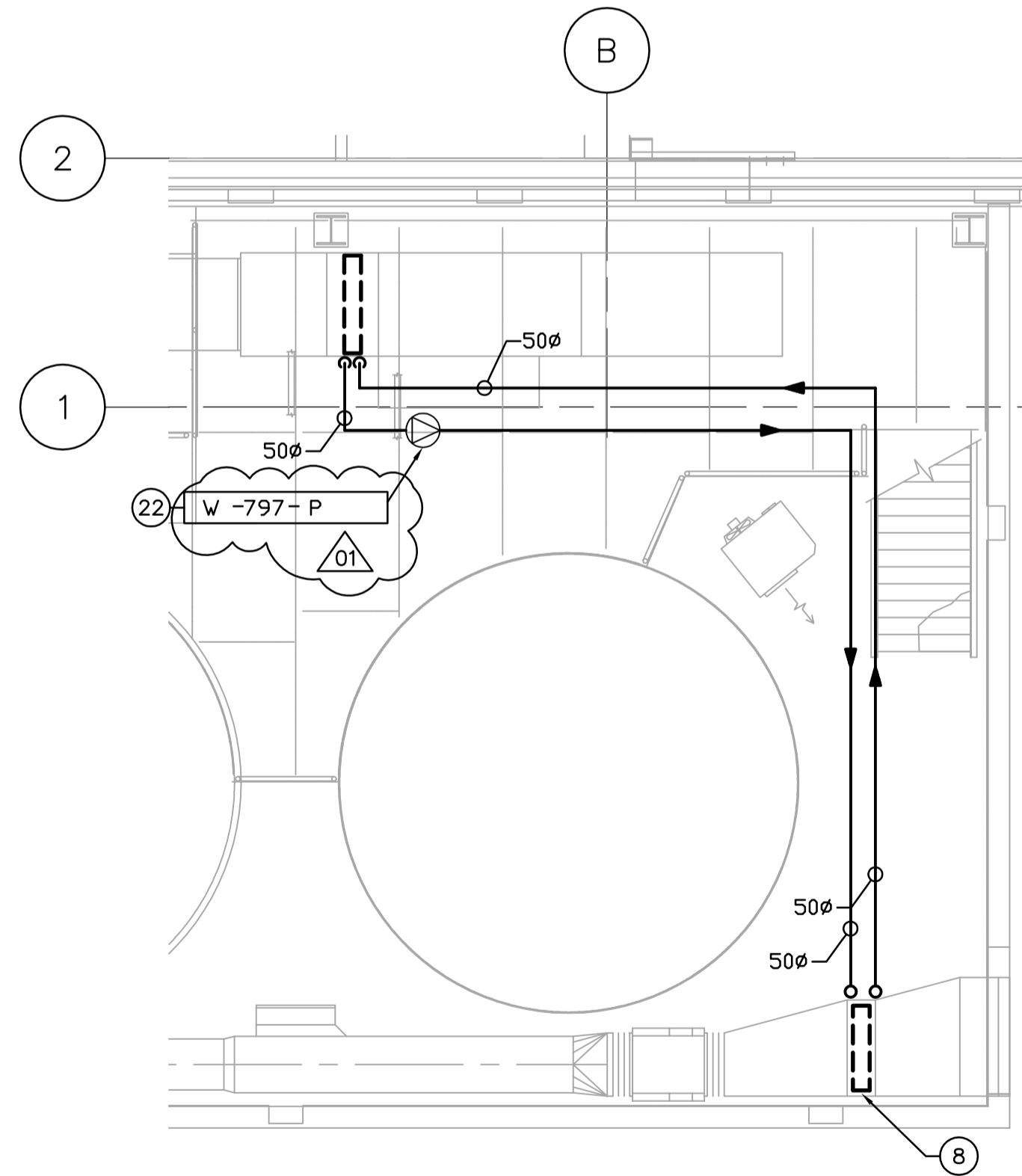


PLUMBING PLAN - MAIN LEVEL
SCALE: 1:50



PLUMBING PLAN - MEZZANINE LEVEL
SCALE: 1:50



HYDRONIC PLAN
SCALE: 1:50

DRAWING NOTES

- 1 50ø DCW LINE TO TIE-IN UPSTREAM OF EXISTING 150ø BACK FLOW PREVENTORS.
- 2 RUN PIPES UNDERSIDE OF BASEMENT CEILING.
- 3 NEW COMPRESSED AIR LINE TO TIE-IN TO EXISTING LINE.
- 4 PRV LOCATED AT HIGH LEVEL. VENT PIPE THROUGH ROOF c/w PITCH POCKET. REDUCE 35 kPa SUPPLY TO 1.7 kPa.
- 5 20ø GAS BRANCH SERVING W-795-MAU.
- 6 13ø GAS BRANCH SERVING UNIT HEATERS.
- 7 DROP PIPES DOWN WALL FROM CEILING AND PENETRATE WALL BELOW FROST LINE. REFER TO CIVIL DRAWINGS FOR UNDERGROUND CONTINUATION.
- 8 HEAT RECLAIM COIL LOCATED IN EXHAUST DUCT. RUN AROUND LOOP PIPED BACK TO PREHEAT COIL IN MAU.
- 9 EXISTING DOMESTIC WATER LINE AND DOUBLE BACKFLOW PREVENTORS.
- 10 EXISTING 50ø GAS LINE.
- 11 EXISTING COMPRESSED AIR LINE.
- 12 NEW GAS LINE TO TIE-IN TO EXISTING 50ø GAS LINE.
- 13 HOSE REEL.
- 14 HOSE BIBB FOR WATER SUPPLY TO HOSE.
- 15 DCW SUPPLY TO HOSE BIBB FROM BELOW.
- 16 OUTLINE OF MEZZANINE ABOVE.
- 17 UNIT HEATER VERTICAL VENT AND COMBUSTION AIR SYSTEM ROOF PENETRATION LOCATION. VERTICAL VENT/COMBUSTION AIR KIT (OPTION CC2) REQUIRED FOR INSTALLATION. FOLLOW MANUFACTURERS INSTALLATION DETAIL AND INSTRUCTIONS.
- 18 TO PUMP SKID. REFER TO PROCESS DRAWINGS.
- 19 COMPRESSED AIR & WATER UTILITY STATION. REFER TO CMS.03 FOR DETAILS & STANDARDS.
- 20 HOSE REEL FOR TIE-IN TO DCW SIDE OF UTILITY STATION.
- 21 HOSE REEL FOR TIE-IN TO COMPRESSED AIR SIDE OF UTILITY STATION.
- 22 CIRCULATION PUMP TO BE SUSPENDED FROM CEILING. SEE VERTICAL INLINE DETAIL.
- 23 SUPPLY AND INSTALL 50ø ISOLATION VALVE.
- 24 HVAC CONTROL PANEL. TOP OF PANEL TO BE INSTALLED 1500 AFF.

GENERAL NOTES

1. COORDINATE WITH OTHER TRADES SO AS TO PREVENT CONFLICTS.
2. PROVIDE HOUSEKEEPING PADS UNDER ALL FLOOR MOUNTED AIR HANDLING EQUIPMENT, PUMPS & TANKS. COORDINATE WITH STRUCTURAL FOR PAD HEIGHT.
3. ALL DUCTWORK SHALL BE SUPPORTED AND SUSPENDED AS PER SPECIFICATIONS AND LOCAL CODES. (SEE DETAILS)



<p>A Tyco International Ltd. Company</p>		<p>ENGINEER'S SEAL</p> <p>ORIGINAL SIGNED BY P. TATARYN 2005/12/02</p>		<p>THE CITY OF WINNIPEG WATER AND WASTE DEPARTMENT ENGINEERING DIVISION</p>	
<p>DESIGNED BY: DC</p> <p>CHECKED BY: AA</p>		<p>APPROVED BY: D. TANIGUCHI</p>		<p>NEWPC CENTRATE NUTRIENT TREATMENT PHOSPHORUS REMOVAL FACILITY CONTRACT No. 1</p>	
<p>DRAWN BY: DC</p> <p>SCALE: 1:50</p>		<p>RELEASED FOR CONSTRUCTION BY: K. MARTENS</p>		<p>CITY FILE NUMBER</p> <p>SHEET OF</p>	
<p>NO. REVISIONS</p>		<p>DATE BY DATE</p> <p>2005/09/21 DATE 05/12/02</p>		<p>CITY DRAWING NUMBER</p> <p>1-010F-A-M0004-001-02-D</p>	
<p>02 611-2005 ADDENDUM 4 06/01/23 DC</p> <p>01 611-2005 ADDENDUM 1 06/01/06 DC</p> <p>00 ISSUED FOR TENDER 05/12/02 DC</p>		<p>CONSULTANT DRAWING NO. CM2.01</p>		<p>MECHANICAL CHEMICAL STORAGE BUILDING PLUMBING & HYDRONIC PLAN</p>	