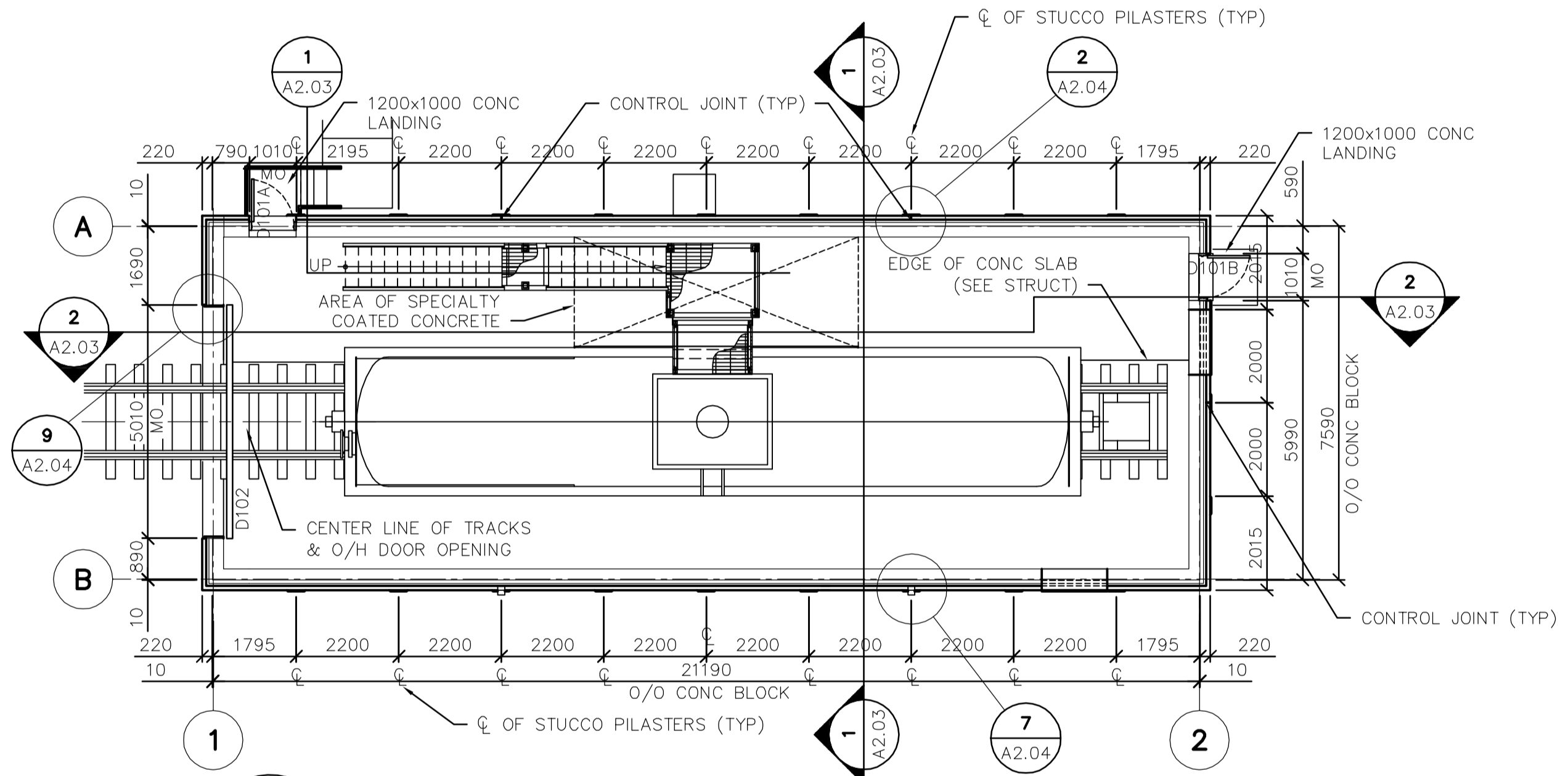
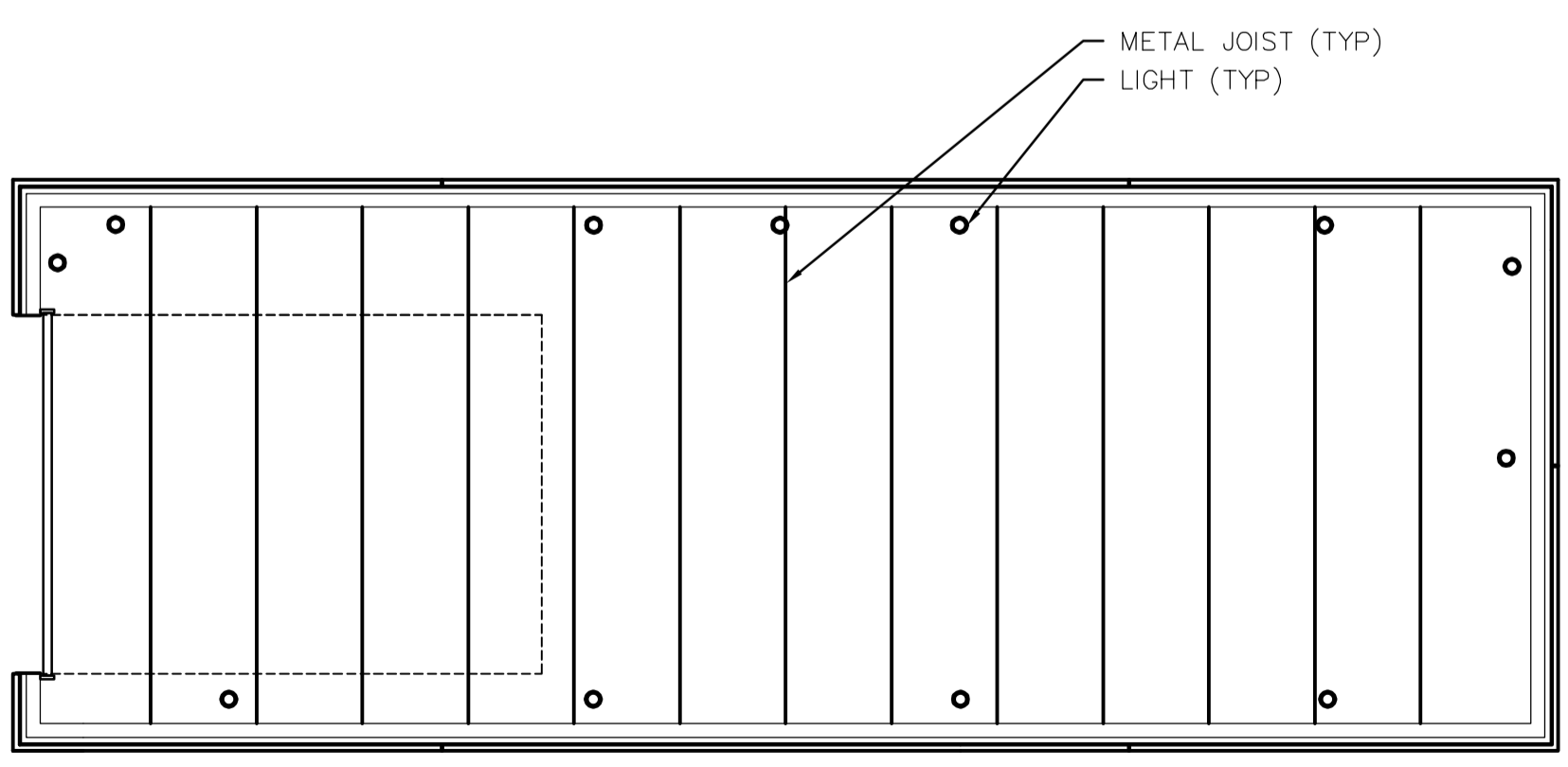


ROOF PLAN
SCALE: 1:100



MAIN FLOOR PLAN
SCALE: 1:100



REFLECTED CEILING PLAN
SCALE: 1:100

DOOR SCHEDULE																	
DOOR NO	TO ROOM	DOOR					FRAME					HDW GROUP	FIRE RATING	GRILLES	COMMENTS		
		SIZE	SWING	TYPE	MAT	CORE	FINISH	COLOUR	PROFILE	MAT	TYPE					FINISH	COLOUR
D101A	RAILCAR	45x1000x2150	RHR	1	HM	INSUL	PT	A	1	HM	WLD	PT	A	1	N/A	N/A	
D101B	RAILCAR	45x1000x2150	RHR	2	HM	INSUL	PT	A	1	HM	WLD	PT	A	1	N/A	N/A	
D102	RAILCAR	50x5000x7000	O/H	3	METAL	INSUL	PREFIN	B	AS PER MANUFACTURER					N/A	N/A	OVERHEAD DOOR	

FINISH SCHEDULE																						
ROOM NO	ROOM NAME	FLOORING		WALLS										CEILING			COMMENTS					
		BASE	NORTH	EAST	SOUTH	WEST	CEILING			COMMENTS												
		MAT	COLOUR	MAT	FINISH	COLOUR	MAT	FINISH	COLOUR	MAT	FINISH	COLOUR	MAT	FINISH	COLOUR	HGT		AFF				
101	RAILCAR	CONC	A	N/A	A	CB	PT	C	CB	PT	C	CB	PT	C	CB	PT	C	METAL	-	BLACK	8000	

HARDWARE SCHEDULE

GROUP	DESCRIPTION	QUANTITY	UNIT	MANUFACTURER
GROUP 1	D101A			
3	BUTT HINGES	TA 314 4-1/2"x4"	NRP	McKINNEY
1	LOCKSET	AU5407 x ASA		YALE (WITHOUT CYLINDER)
1	WALL STOP	S122		STANDARD METAL
1	WEATHERSTRIP	W29 1/3 + .2/7		KN CROWDER
1	DOOR SWEEP	W24S - 36"		KN CROWDER
1	THRESHOLD	CT11 - 36"		KN CROWDER
1	CLOSER	8301		NORTON
GROUP 2	D101B			
3	BUTT HINGES	TA 314 4-1/2"x4"	NRP	McKINNEY
1	EXIT DEVICE	4040		LCN
1	WALL STOP	S122		STANDARD METAL
1	WEATHERSTRIP	W29 1/3 + .2/7		KN CROWDER
1	DOOR SWEEP	W24S - 36"		KN CROWDER
1	THRESHOLD	CT11 - 36"		KN CROWDER
1	CLOSER	8301		NORTON
BLANK (NO HARDWARE) ON EXTERIOR				

GROUP 3 D102
AS PER MANUFACTURER

CODE ANALYSIS
OCTOBER 27, 2005
NORTH END WINNIPEG WATER POLLUTION CONTROL CENTRE
2230 MAIN STREET
WINNIPEG, MANITOBA
R2V 4T8

NEW RAILCAR BUILDING BUILDING CODE ANALYSIS

1.0 DESCRIPTION

- BUILDING AREA: 177.0 M2 (1,904.52 SF) TOTAL AREA.
- STORIES: (1)
- SPRINKLERED: NO
- OCCUPANCY TYPE: GROUP F, DIVISION 3
- OCCUPANT LOAD: 0 (1 INTERMITTENT)
- STREETS: (1)

2.0 REGULATION

1. THIS PROJECT MAY BE REGULATED UNDER 3.2.2.80., GROUP F, DIVISION 3, UP TO 6 STOREYS

2. CLASSIFICATION

1. REQUIREMENTS:

- ≤5,600 M2 (60,256 SF) BUILDING AREA (CONFORMS: 177.0 M2)
- ≤ (6) STORIES (CONFORMS: 1)
- UNSPRINKLERED (CONFORMS)
- TYPE "F-3" OCCUPANCY (CONFORMS)
- (1) STREET (CONFORMS)

2. STIPULATIONS:

- MAY BE HEAVY-TIMBER OR NON-COMBUSTIBLE CONSTRUCTION

3.0 GENERAL CONFORMANCE

1. 3.4.2.5 - TRAVEL DISTANCE: RAILCAR BUILDING

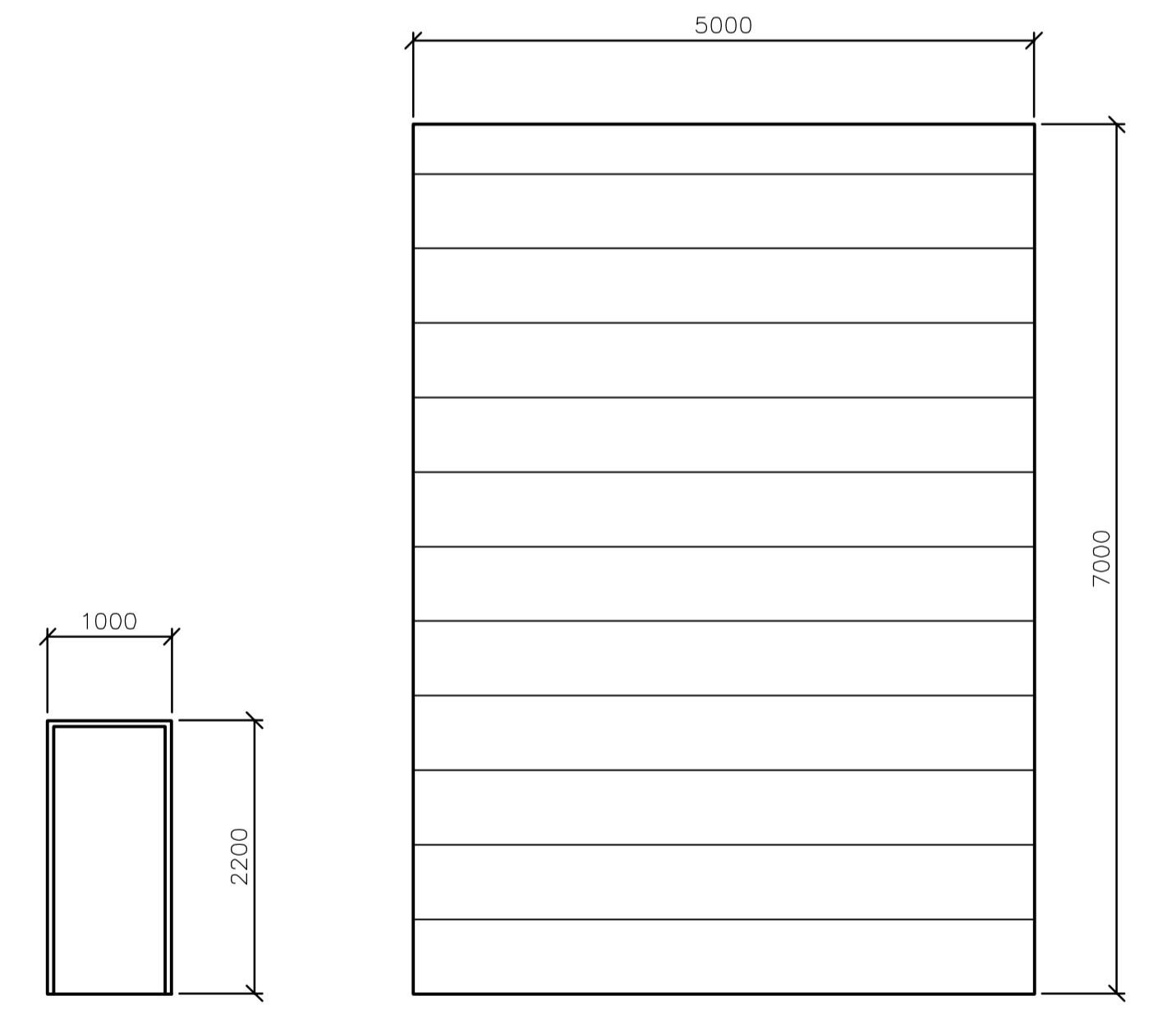
1. MAXIMUM TRAVEL DISTANCE TO AN EXIT IS 30 M (98') (CONFORMS: MAX. TRAVEL OF 13.5 M).

2. 3.4.2.1 - NUMBER OF EXITS: RAILCAR BUILDING

1. (1) EXIT IS REQUIRED (< 200 M2) (CONFORMS: 2 PROVIDED).

3. 3.2.3.1 - LIMITING DISTANCE

1. NO ISSUES



DOOR TYPES
SCALE 1:50

FRAME TYPES
SCALE 1:10

B.M. ELEV.	 A Tyco International Ltd. Company				
				NEWPCC CENTRATE NUTRIENT TREATMENT PHOSPHORUS REMOVAL FACILITY CONTRACT No. 1	
DESIGNED BY: NC	CHECKED BY: NC	ARCHITECTURAL RAILCAR BUILDING ROOF, MAIN FLOOR, & CEILING PLANS & SCHEDULES		CITY FILE NUMBER	
DRAWN BY: LK	APPROVED BY: D. TANIGUCHI	CONSULTANT DRAWING NO. CA2.01		SHEET 1 OF 4	
SCALE: AS SHOWN	RELEASED FOR CONSTRUCTION BY: K. MARTENS			CITY DRAWING NUMBER	
00 ISSUED FOR TENDER	05/12/2 LK			1-010F-A-B0001-001-00-D	
NO. REVISIONS	DATE BY	DATE 2005/10/07	DATE 05/12/02		