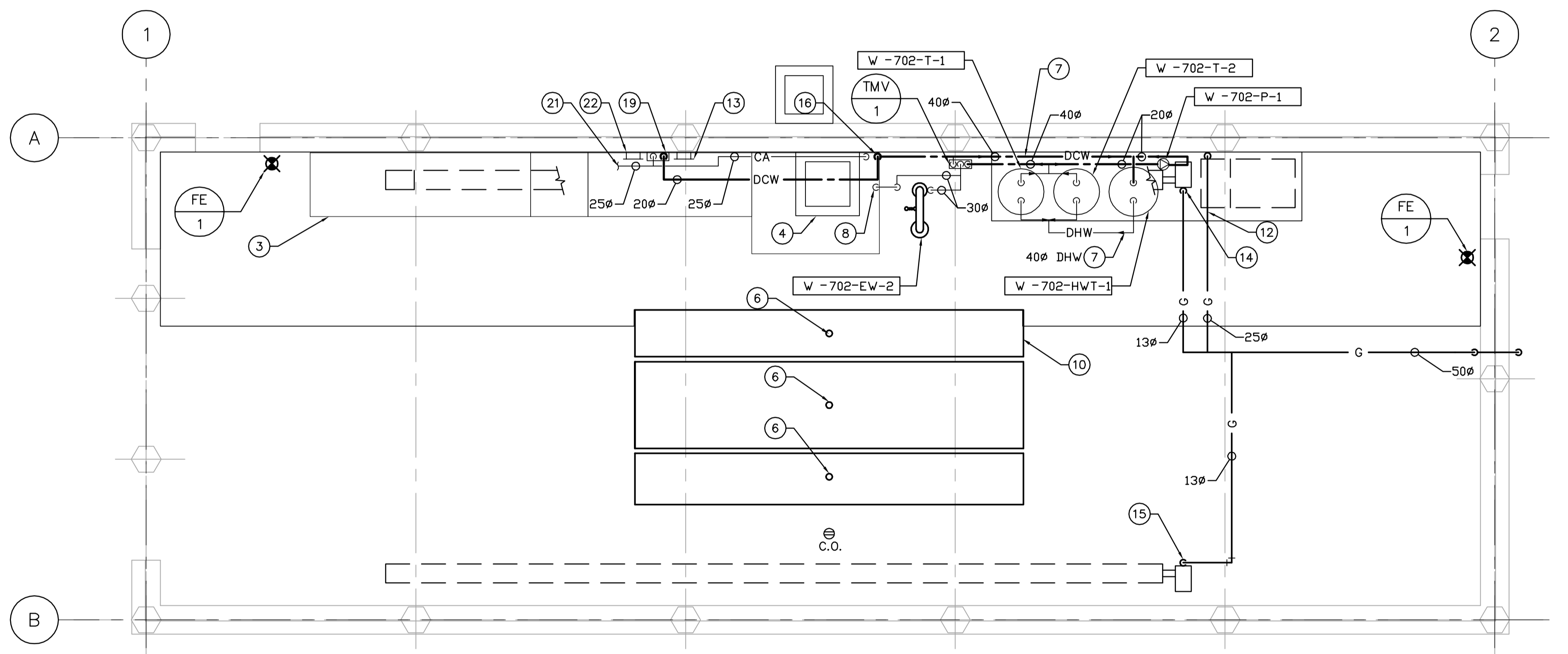
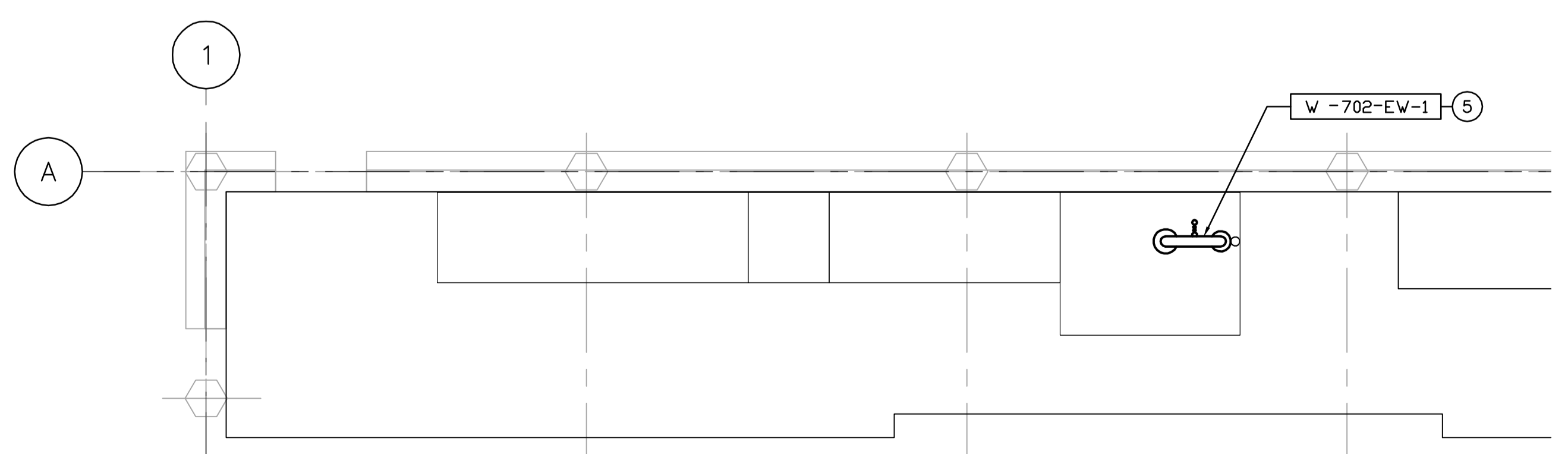


PLUMBING PLAN - FOUNDATION LEVEL
SCALE: 1:50



PLUMBING PLAN - GROUND LEVEL
SCALE: 1:50



PLUMBING PLAN - PLATFORM LEVEL
SCALE: 1:50

DRAWING NOTES

- ① 100 ϕ SANITARY DRAIN TO CHEMICAL STORAGE BUILDING SUMP PIT. RUN IN TRENCH BELOW FROST LINE. REFER TO CIVIL DRAWINGS.
- ② 40 ϕ DCW MAIN FROM SLUDGE, DEWATERING BUILDING. RUN IN TRENCH BELOW FROST LINE. REFER TO CIVIL DRAWINGS FOR UNDERGROUND PIPE & BUILDING ENTRY LOCATION. REFER TO WATER ENTRY DETAIL.
- ③ OUTLINE OF STAIRS AND PLATFORM.
- ④ GRIT INTERCEPTOR. REFER TO STRUCTURAL DRAWINGS.
- ⑤ COMBINATION EYEWASH AND SHOWER STATION ON PLATFORM LEVEL.
- ⑥ CONNECT SANITARY TO RAIL CONTAINMENT PANS. REFER TO DRAWING CM5.02 FOR ROUTING SANITARY BETWEEN RAIL TIES.
- ⑦ HEAT TRACE AND INSULATE ALL WATER PIPING. REFER TO SPECIFICATIONS.
- ⑧ 40 ϕ TEMPERED WATER LINE RISING TO W-EW-702-3 ON PLATFORM.
- ⑨ RUN NATURAL GAS SERVICE BELOW GRADE FROM CHEMICAL STORAGE BUILDING. REFER TO CIVIL FOR UNDERGROUND LOCATION.
- ⑩ RAIL CONTAINMENT PANS TO DRAIN INTO GRIT INTERCEPTOR. (SEE DETAIL)
- ⑪ PRV LOCATED AT HIGH LEVEL. VENT PIPE THROUGH ROOF c/w PITCH POCKET.
- ⑫ NG BRANCH SERVING W-MAU-790.
- ⑬ HOSE & REEL FOR COMPRESSED AIR SERVICE.
- ⑭ NG BRANCH SERVING W-RH-792.
- ⑮ NG BRANCH SERVING W-RH-793.
- ⑯ 40 ϕ DCW MAIN TO RISE TO W-HWT-1 AND W-MV-1.
- ⑰ TRUCK CHEMICAL UNLOADING SPILL CONTAINMENT PIT. TO DRAIN & TIE INTO 100 ϕ SANITARY LINE BELOW REFER TO STRUCTURAL FOR PIT LOCATION.
- ⑱ 25 ϕ COMPRESSED AIR LINE.
- ⑲ COMPRESSED AIR & WATER UTILITY STATION. REFER TO CM5.02 FOR DETAILS & STANDARDS.
- ⑳ UNDERGROUND GAS LINE. REFER TO CIVIL.
- ㉑ SEE PROCESS DRAWINGS FOR CONTINUATION.
- ㉒ HOSE REEL FOR TIE-IN TO DCW OF UTILITY STATION.

GENERAL NOTES

1. COORDINATE WITH OTHER TRADES SO AS TO PREVENT CONFLICTS.
2. PROVIDE HOUSEKEEPING PADS UNDER ALL FLOOR MOUNTED AIR HANDLING EQUIPMENT, PUMPS & TANKS. COORDINATE WITH STRUCTURAL FOR PAD HEIGHT.
3. ALL DUCTWORK SHALL BE SUPPORTED AND SUSPENDED AS PER SPECIFICATIONS AND LOCAL CODES. (SEE DETAILS)



| | | | |
|-------------|-------------------|-------------------------------|--------------|
| B.M. ELEV. | | | |
| DESIGNED BY | DC | CHECKED BY | AA |
| DRAWN BY | LJW | APPROVED BY | D. TANIGUCHI |
| SCALE: | 1:50 | RELEASED FOR CONSTRUCTION BY: | K. MARTENS |
| NO. | ISSUED FOR TENDER | DATE | 05/12/02 |
| REVISIONS | | DATE | 2005/09/21 |

EarthTech
A Tyco International Ltd. Company

ENGINEER'S SEAL

ORIGINAL SIGNED BY
P. TATARYN
2005/12/02

CONSULTANT DRAWING NO.
CM1.01

THE CITY OF WINNIPEG
WATER AND WASTE DEPARTMENT
ENGINEERING DIVISION

NEWPCC CENTRATE NUTRIENT TREATMENT
PHOSPHORUS REMOVAL FACILITY
CONTRACT No. 1

CITY FILE NUMBER
SHEET OF
CITY DRAWING NUMBER
1-00F-A-M0001-001-00-D