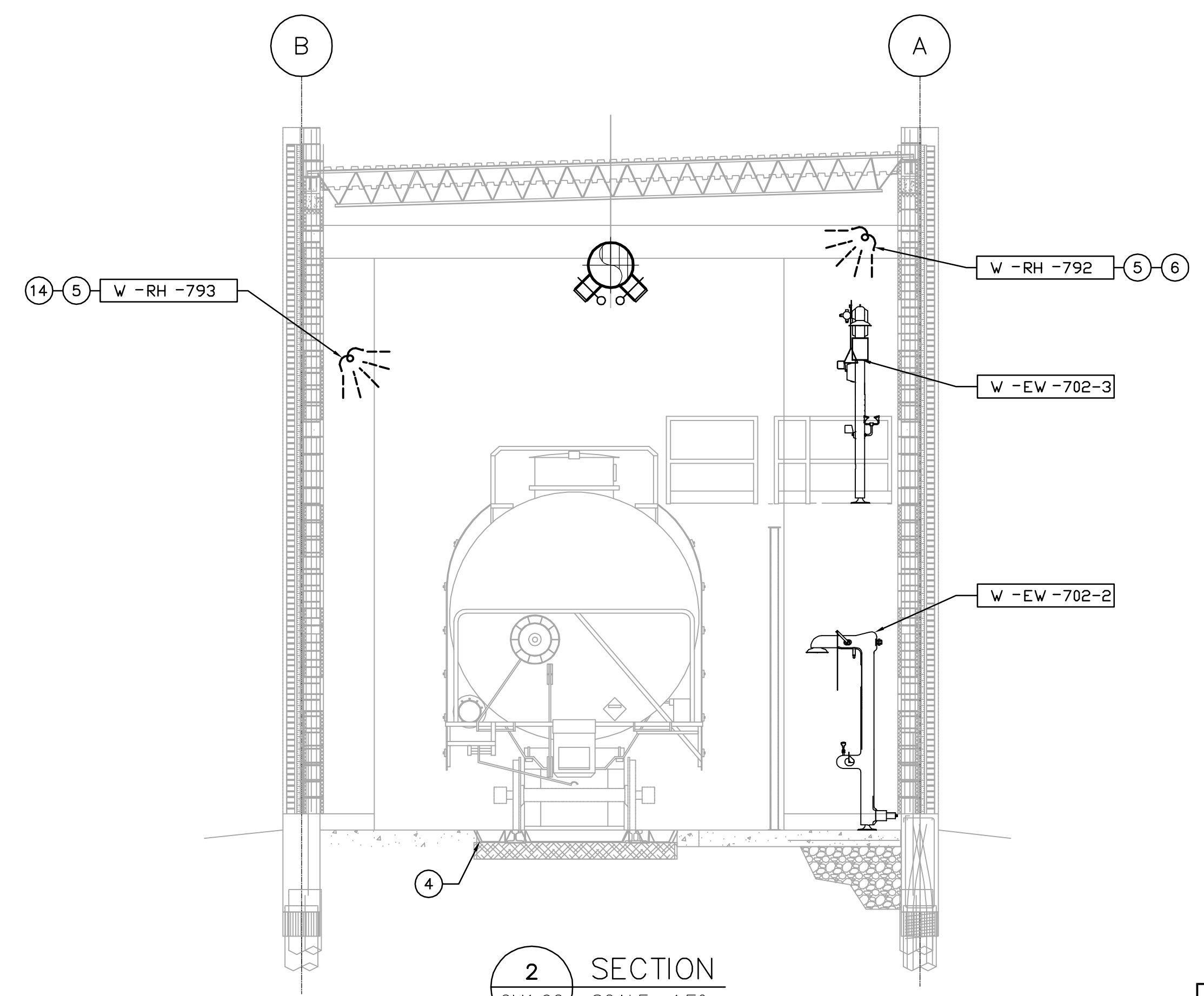
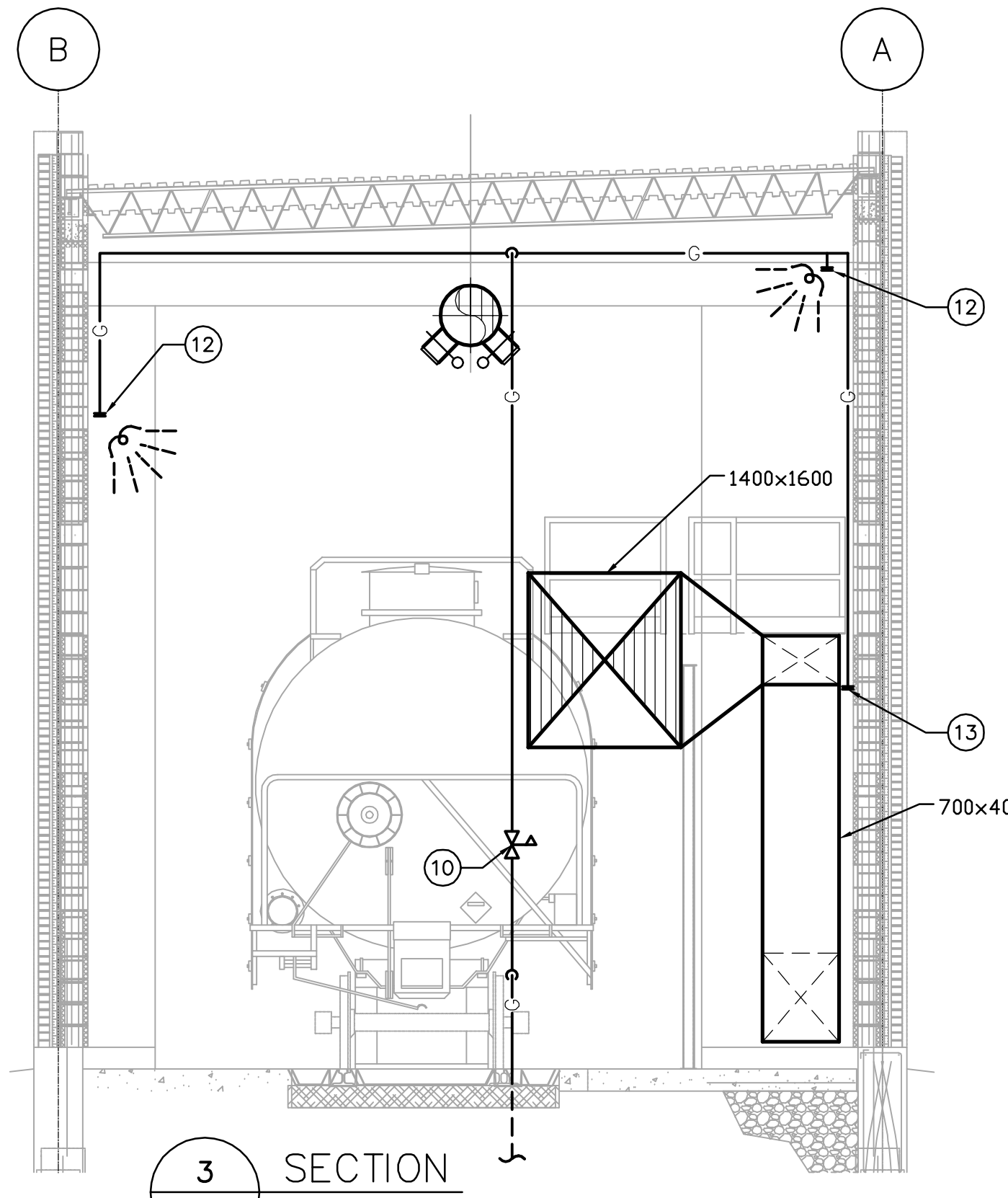


1 SECTION  
CM1.02 SCALE 1:50



2 SECTION  
CM1.02 SCALE 1:50



3 SECTION  
CM1.02 SCALE 1:50

**DRAWING NOTES**

- 1 FACTORY INSTALLED SAFETY INLET SCREEN.
- 2 FIRE EXTINGUISHERS SHALL BE INSTALLED AS PER LOCAL CODES AND REGULATIONS.
- 3 ALL DOORS AND MAINTENANCE ACCESS POINTS FOR W-MAU-790 SHALL BE FREE OF OBSTRUCTIONS.
- 4 RAILCAR CONTAINMENT PAN.
- 5 RADIANT HEATERS SHALL BE TILTED 45° TOWARDS THE CENTER OF THE ROOM AND SUSPENDED FROM ROOF JOISTS.
- 6 MOUNT 2400mm ABOVE PLATFORM.
- 7 UTILITY STATION FOR COMPRESSED AIR AND DOMESTIC COLD WATER. SEE DRAWING CM5-03 FOR DETAILS AND STANDARDS.
- 8 COMPRESSED AIR HOSE REEL. SEE DRAWING CM5-03 FOR DETAILS AND STANDARDS.
- 9 EXTENDED GREASE FITTING WITHIN EASY REACH. GREASE LINE TO BE SECURELY AFFIXED TO WALL.
- 10 PRV LOCATED AT 2000 AFF. VENT PIPE THROUGH ROOF c/w PITCH POCKET. REDUCE HIGH PRESSURE SUPPLY TO 1.7 kPa.
- 11 SUPPLY & INSTALL FLEX JOINT ON FAN. SEE DETAIL ON CM4.02.
- 12 13 GAS LINE TO RADIANT HEATERS.
- 13 25 GAS LINE TO MAKE-UP AIR UNIT.
- 14 SUPPORT RADIANT HEATER FROM WALL WHERE OVERHEAD DOOR INTERFERES WITH CEILING SUSPENSION.
- 15 HOSE REEL FOR DCW SUPPLY FROM UTILITY STATION.

**GENERAL NOTES**

- 1. COORDINATE WITH OTHER TRADES SO AS TO PREVENT CONFLICTS.
- 2. PROVIDE HOUSEKEEPING PADS UNDER ALL FLOOR MOUNTED AIR HANDLING EQUIPMENT, PUMPS & TANKS. COORDINATE WITH STRUCTURAL FOR PAD HEIGHT.
- 3. ALL DUCTWORK SHALL BE SUPPORTED AND SUSPENDED AS PER SPECIFICATIONS AND LOCAL CODES. (SEE DETAILS)

**APEGM**  
Certificate of Authorization  
Earth Tech Canada Inc.  
No. 730 Expiry: April 30, 2006

B.M. ELEV.			
DESIGNED BY	DC	CHECKED BY	AA
DRAWN BY	DC	APPROVED BY	D. TANIGUCHI
SCALE:	1:50	RELEASED FOR CONSTRUCTION BY:	K. MARTENS
NO.	ISSUED FOR TENDER	05/12/2	DC
REVISIONS		DATE	DATE
		2005/09/21	05/12/02

**EarthTech**  
A Tyco International Ltd. Company

ENGINEER'S SEAL  
ORIGINAL SIGNED BY  
P. TATARYN  
2005/12/02  
CONSULTANT DRAWING NO.  
CM1.03

**THE CITY OF WINNIPEG**  
WATER AND WASTE DEPARTMENT  
ENGINEERING DIVISION  
NEWPCC CENTRATE NUTRIENT TREATMENT  
PHOSPHORUS REMOVAL FACILITY  
CONTRACT No. 1  
CITY FILE NUMBER  
SHEET OF  
CITY DRAWING NUMBER  
1-010F-A-M0003-001-00-D  
MECHANICAL  
RAILCAR SHELTER  
SECTIONS