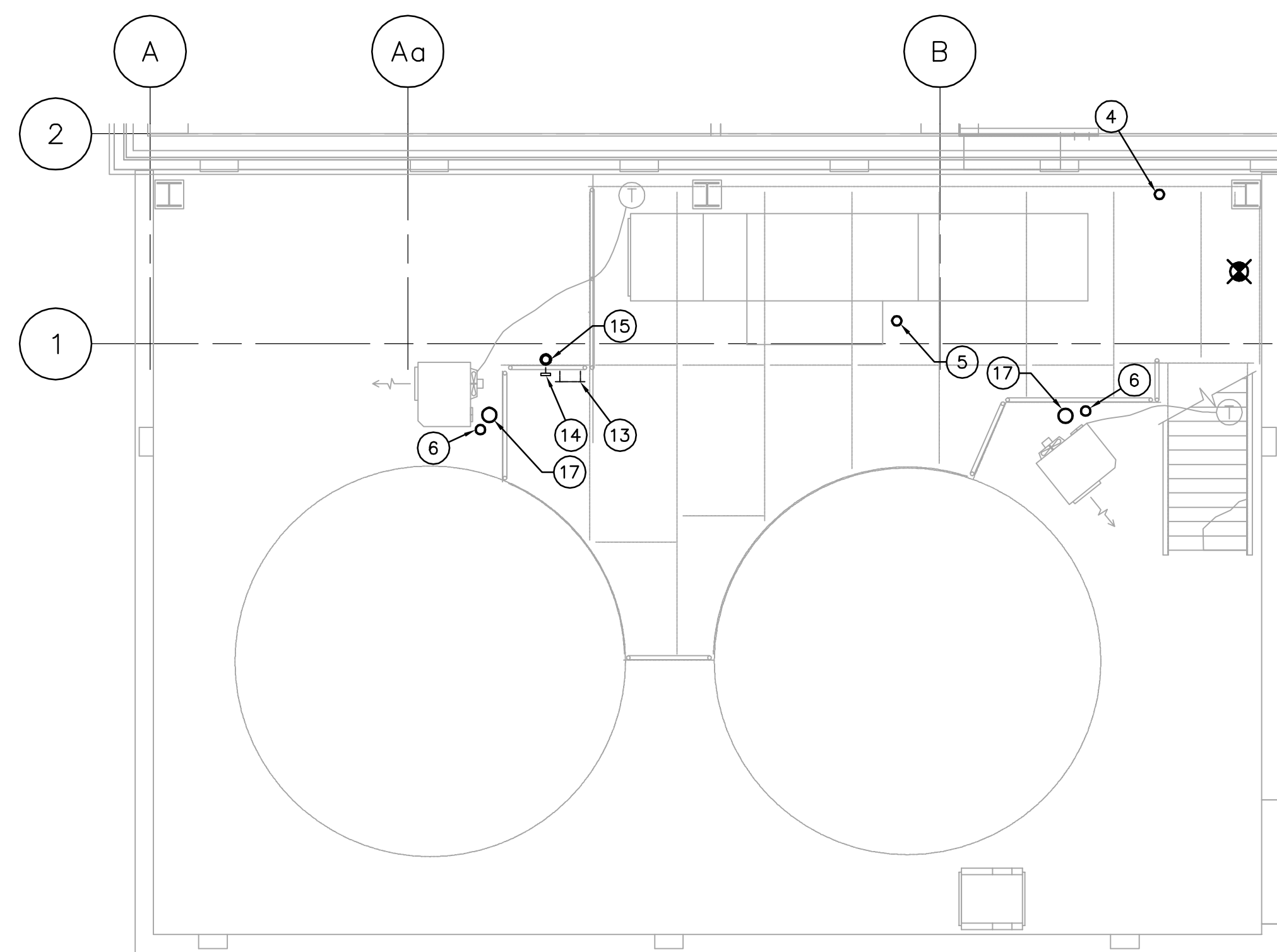
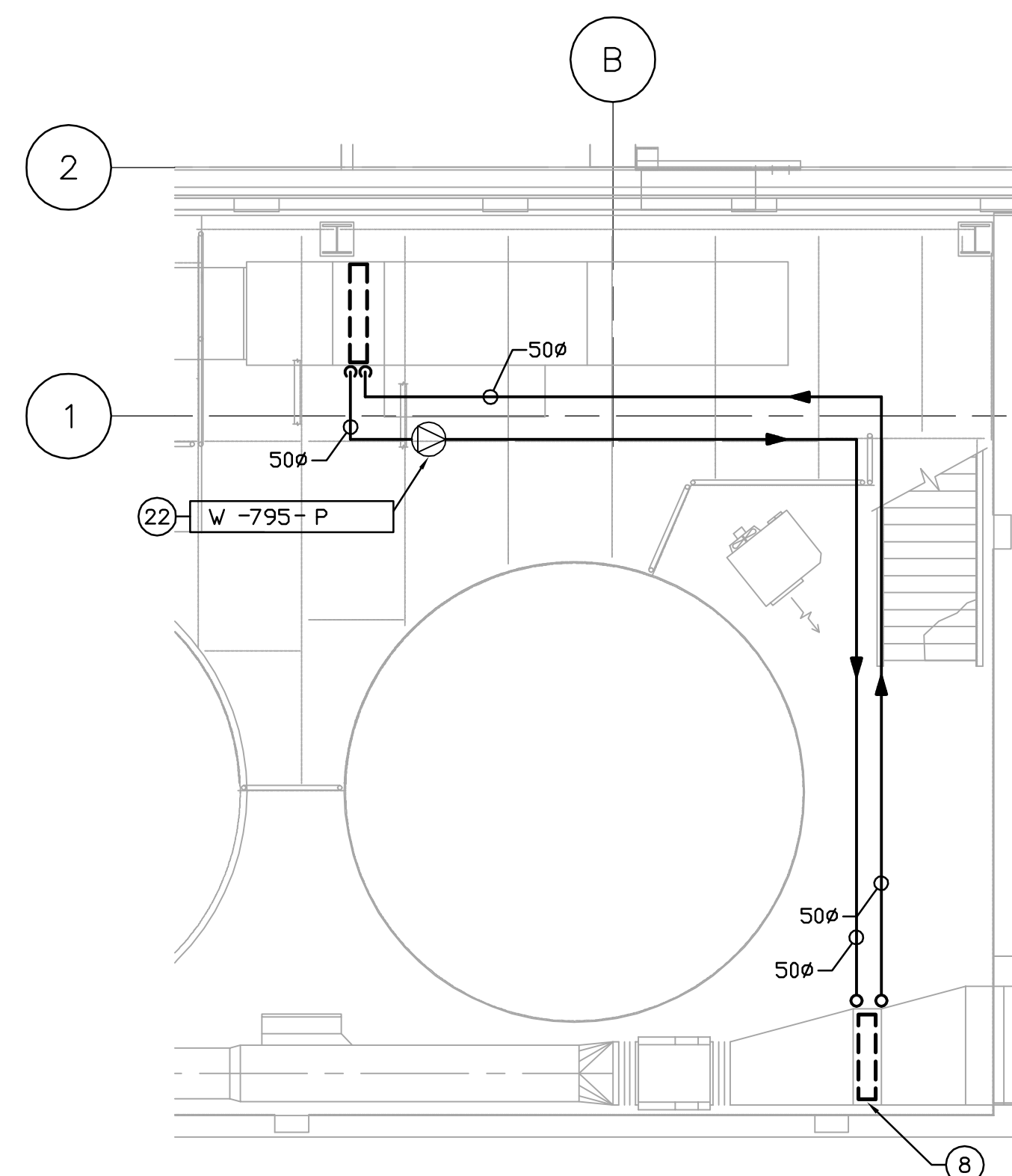


PLUMBING PLAN - MAIN LEVEL
SCALE: 1:50

APECM
Certificate of Authorization
Earth Tech Canada Inc.
No. 730 Expiry: April 30, 2006



PLUMBING PLAN - MEZZANINE LEVEL
SCALE: 1:50



HYDRONIC PLAN
SCALE: 1:50

DRAWING NOTES

- 1 50ø DCW LINE TO TIE-IN UPSTREAM OF EXISTING 150ø BACK FLOW PREVENTORS.
- 2 RUN PIPES UNDERSIDE OF BASEMENT CEILING.
- 3 NEW COMPRESSED AIR LINE TO TIE-IN TO EXISTING LINE.
- 4 PRV LOCATED AT HIGH LEVEL. VENT PIPE THROUGH ROOF c/w PITCH POCKET. REDUCT TO 1.7 kPa.
- 5 20ø GAS BRANCH SERVING W-795-MAU.
- 6 13ø GAS BRANCH SERVING UNIT HEATERS.
- 7 DROP PIPES DOWN WALL FROM CEILING AND PENETRATE WALL BELOW FROST LINE. REFER TO CIVIL DRAWINGS FOR UNDERGROUND CONTINUATION.
- 8 HEAT RECLAIM COIL LOCATED IN EXHAUST DUCT. RUN AROUND LOOP PIPED BACK TO PREHEAT COIL IN MAU.
- 9 EXISTING DOMESTIC WATER LINE AND DOUBLE BACKFLOW PREVENTORS.
- 10 EXISTING 50ø GAS LINE.
- 11 EXISTING COMPRESSED AIR LINE.
- 12 NEW GAS LINE TO TIE-IN TO EXISTING 50ø GAS LINE.
- 13 HOSE REEL.
- 14 HOSE BIBB FOR WATER SUPPLY TO HOSE.
- 15 DCW SUPPLY TO HOSE BIBB FROM BELOW.
- 16 OUTLINE OF MEZZANINE ABOVE.
- 17 UNIT HEATER VERTICAL VENT AND COMBUSTION AIR SYSTEM ROOF PENETRATION LOCATION. VERTICAL VENT/COMBUSTION AIR KIT (OPTION CC2) REQUIRED FOR INSTALLATION. FOLLOW MANUFACTURERS INSTALLATION DETAIL AND INSTRUCTIONS.
- 18 TO PUMP SKID. REFER TO PROCESS DRAWINGS.
- 19 COMPRESSED AIR & WATER UTILITY STATION. REFER TO CM5.03 FOR DETAILS & STANDARDS.
- 20 HOSE REEL FOR TIE-IN TO DCW SIDE OF UTILITY STATION.
- 21 HOSE REEL FOR TIE-IN TO COMPRESSED AIR SIDE OF UTILITY STATION.
- 22 CIRCULATION PUMP TO BE SUSPENDED FROM CEILING. SEE VERTICAL INLINE DETAIL.
- 23 SUPPLY AND INSTALL 50ø ISOLATION VALVE.
- 24 HVAC CONTROL PANEL. TOP OF PANEL TO BE INSTALLED 1500 AFF.

GENERAL NOTES

1. COORDINATE WITH OTHER TRADES SO AS TO PREVENT CONFLICTS.
2. PROVIDE HOUSEKEEPING PADS UNDER ALL FLOOR MOUNTED AIR HANDLING EQUIPMENT, PUMPS & TANKS. COORDINATE WITH STRUCTURAL FOR PAD HEIGHT.
3. ALL DUCTWORK SHALL BE SUPPORTED AND SUSPENDED AS PER SPECIFICATIONS AND LOCAL CODES. (SEE DETAILS)

B.M. ELEV.			
NO.	ISSUED FOR TENDER	05/12/2	DC
NO.	REVISIONS	DATE	BY
		2005/09/21	DC

EarthTech
A Tyco International Ltd. Company

DESIGNED BY	DC	CHECKED BY	AA
DRAWN BY	DC	APPROVED BY	D. TANIGUCHI
SCALE:	1:50	RELEASED FOR CONSTRUCTION BY:	K. MARTENS
		DATE	05/12/02

ENGINEER'S SEAL
ORIGINAL SIGNED BY
P. TATARYN
2005/12/02
CONSULTANT DRAWING NO.
CM2.01

THE CITY OF WINNIPEG
WATER AND WASTE DEPARTMENT
ENGINEERING DIVISION

NEWPCC CENTRATE NUTRIENT TREATMENT
PHOSPHORUS REMOVAL FACILITY
CONTRACT No. 1

MECHANICAL
CHEMICAL STORAGE BUILDING
PLUMBING & HYDRONIC PLAN

CITY FILE NUMBER
SHEET OF
CITY DRAWING NUMBER
1-101F-A-M0004-001-00-D