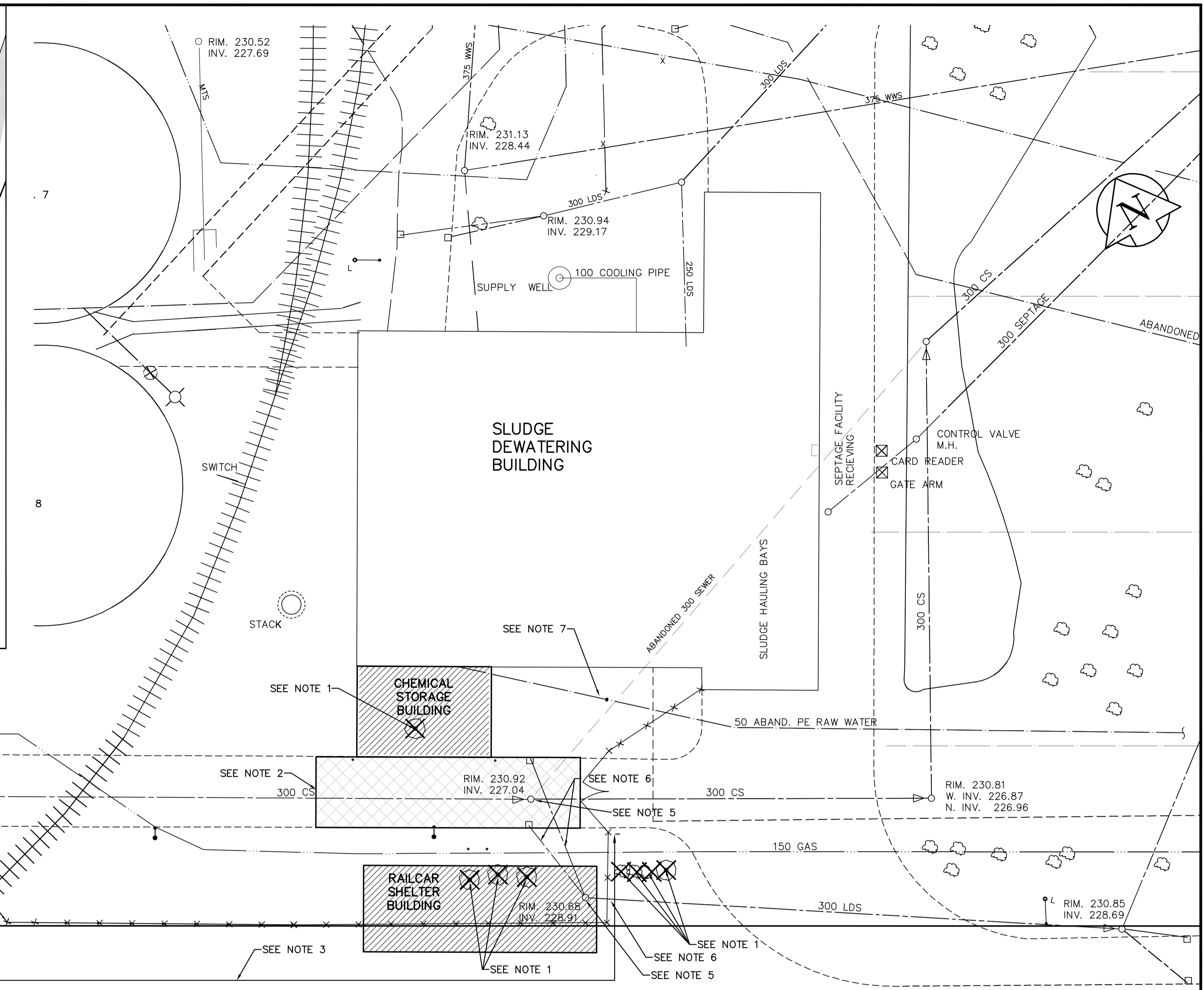


ACCESS AND LAYDOWN PLAN
SCALE 1:1000



EXISTING SITE PLAN AND REMOVALS PLAN
SCALE 1:250

- REMOVAL NOTES:**
1. REMOVE EXISTING TREES
 2. REMOVE EXIST. PAVEMENT: PAVEMENT TO BE SAW CUT AND REMOVED FULL WIDTH AS NEEDED FOR EXCAVATION FOR BUILDING AND UTILITIES. LIMITS SHOWN ARE APPROXIMATE.
 3. REMOVE EXISTING FENCING. SALVAGE FENCE FABRIC, GATES, AND GATE HARDWARE FOR REUSE. PROVIDE TEMPORARY SECURITY FENCING AS SHOWN ON LAYDOWN AREA PLAN.
 4. PRUNE EXISTING TREES UNDER THE SUPERVISION OF A LICENSED ARBORIST.
 5. REMOVE EXISTING MANHOLE.
 6. CAP OFF AND ABANDON EXISTING LAND DRAINAGE SEWERS. REMOVE AND REPLACE C.B. INLET FRAMES AS NOTED ON CC1.02.
 7. CAP OFF AND ABANDON EXISTING 50mm RAW WATER LINE

150 mm W.M.	WATERMAIN	150 mm W.M.	HYDRO	---	---	---	---	---	---
+	HYDRANT	+	M.T.S.	---	---	---	---	---	---
⊙	VALVE	⊙	CONCRETE	---	---	---	---	---	---
300mm L.D.S.	LAND DRAINAGE SEWER	300mm L.D.S.	ASPHALT	---	---	---	---	---	---
250mm W.W.S.	WASTEWATER SEWER	250mm W.W.S.	PROPERTY LINE	---	---	---	---	---	---
○	MANHOLE	⊕	SURVEY BAR	---	---	---	---	---	---
□	CATCH BASIN	232.750	ELEVATION	---	---	---	---	---	---
▽	CURB INLET	500e	TREE	---	---	---	---	---	---
+	JUNCTIONS	---	ANODE	---	---	---	---	---	---
---	CULVERT	---	CONCRETE SIDEWALK	---	---	---	---	---	---
---	GAS	---	FENCE	---	---	---	---	---	---
---	EXISTING	---	LEGEND - PLAN	---	---	---	---	---	---
---	LEGEND - PLAN	---	PROPOSED	---	---	---	---	---	---

APECA
Certificate of Authorization
Earth Tech Canada Inc.
No. 730 Expiry: April 30, 2006

B.M. 13-027 W. side Main St. on the grounds of the North End Treatment Plant, 70ft. on top of Conc. pit in front of main bldg., 22.5m E. of line of most Ely. wall & 32.8m S. of most N.W. wall of main bldg. (ties to 1311) ELEV = 231.261m

00	ISSUED FOR TENDER	05/12/2	GSK
NO.	REVISIONS	DATE	BY

EarthTech
A Tyco International Ltd. Company

DESIGNED BY	GSK	CHECKED BY	JEH
DRAWN BY	MAF	APPROVED BY	D. TANIGUCHI
SCALE:	AS NOTED	RELEASED FOR CONSTRUCTION BY:	K. MARTENS
DATE	2005/09/30	DATE	05/12/02

ENGINEER'S SEAL
ORIGINAL SIGNED BY
J.E. HUTCHISON
2005/12/02
CONSULTANT DRAWING NO.
CC1.01

THE CITY OF WINNIPEG
WATER AND WASTE DEPARTMENT
ENGINEERING DIVISION

NEWPCC CENTRATE NUTRIENT TREATMENT PHOSPHORUS REMOVAL FACILITY
CONTRACT No. 1

CIVIL
EXISTING SITE PLAN AND REMOVALS AND ACCESS AND LAYDOWN AREAS

CITY FILE NUMBER
SHEET OF
CITY DRAWING NUMBER
1-00F-D-C001-001-00-D