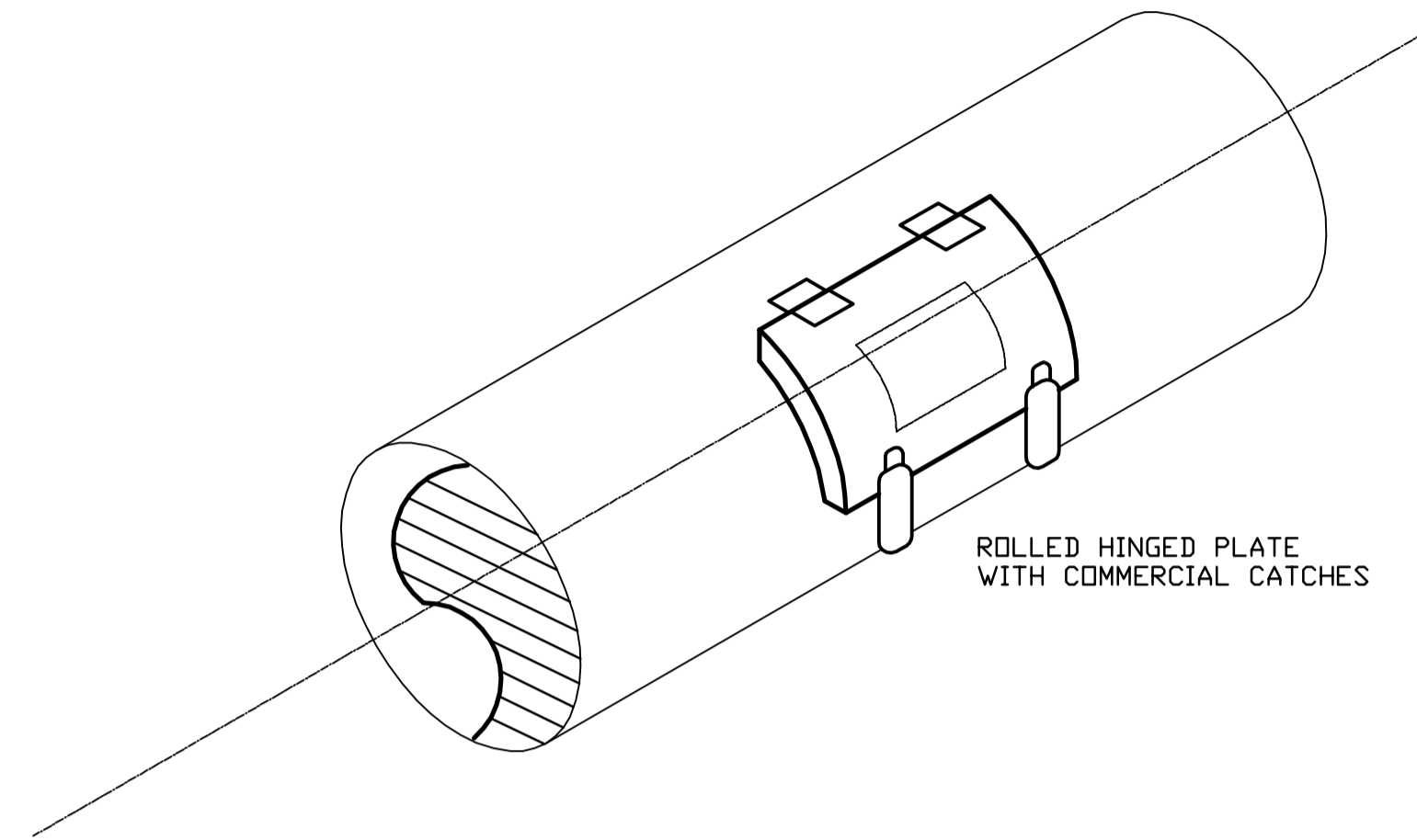
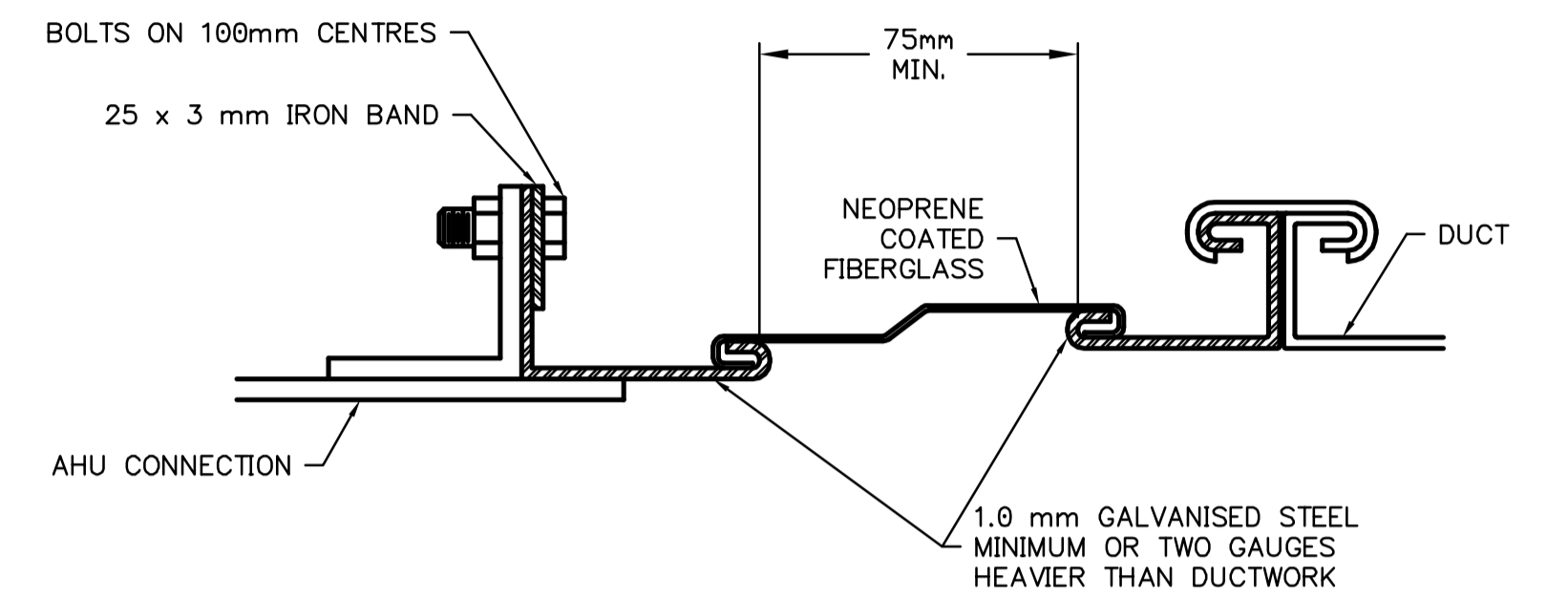


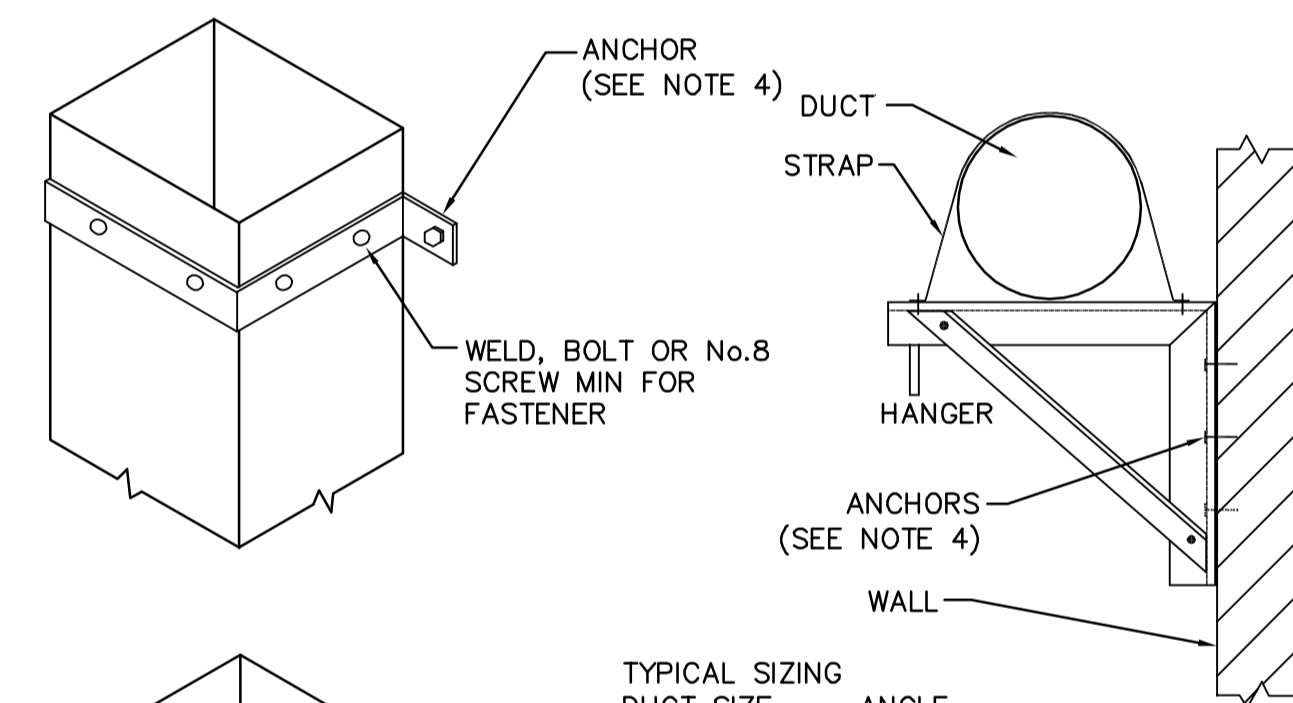
1 ROOF VENT PENETRATION DETAIL
SCALE N.T.S.



2 ACCESS DOOR - ROUND DUCT
SCALE N.T.S.



3 FLEXIBLE DUCT FAN CONNECTION DETAIL
SCALE N.T.S.



TYPICAL SIZING

DUCT SIZE	ANGLE
900x450	25x25x3
1200x750	30x30x3

- NOTE:
- BRACKETS ARE SIZED FOR 3600mm OF DUCT MAX
 - LOCATE DUCTS AGAINST WALL OR MAX OF 50mm AWAY FROM WALL
 - EACH WALL ANCHOR SHALL SATISFY THE FOLLOWING:
 - TENSILE LOAD = 9 x DUCT WEIGHT; SAFETY FACTOR OF 4
 - SHEAR LOAD = 15 x DUCT WEIGHT; SAFETY FACTOR OF 4
 - SECURE WITH APPROVED ANCHORS TO MATCH WALL CONSTRUCTION

4 DUCT SUPPORTS FROM WALL DETAIL
SCALE N.T.S.



B.M. ELEV.			
DESIGNED BY	DC	CHECKED BY	AA
DRAWN BY	DC	APPROVED BY	D. TANIGUCHI
SCALE:	N.T.S.	RELEASED FOR CONSTRUCTION BY:	K. MARTENS
NO.	ISSUED FOR TENDER	DATE	05/12/2 DC
REVISIONS		DATE	2005/09/21



ENGINEER'S SEAL
ORIGINAL SIGNED BY
P. TATARYN
2005/12/02
CONSULTANT DRAWING NO.
CM4.02

THE CITY OF WINNIPEG
WATER AND WASTE DEPARTMENT
ENGINEERING DIVISION

NEWPCC CENTRATE NUTRIENT TREATMENT
PHOSPHORUS REMOVAL FACILITY
CONTRACT No. 1

CITY FILE NUMBER
SHEET OF
CITY DRAWING NUMBER
1-0101F-D-M0002-002-00-D

MECHANICAL
HVAC DETAILS
2 OF 2