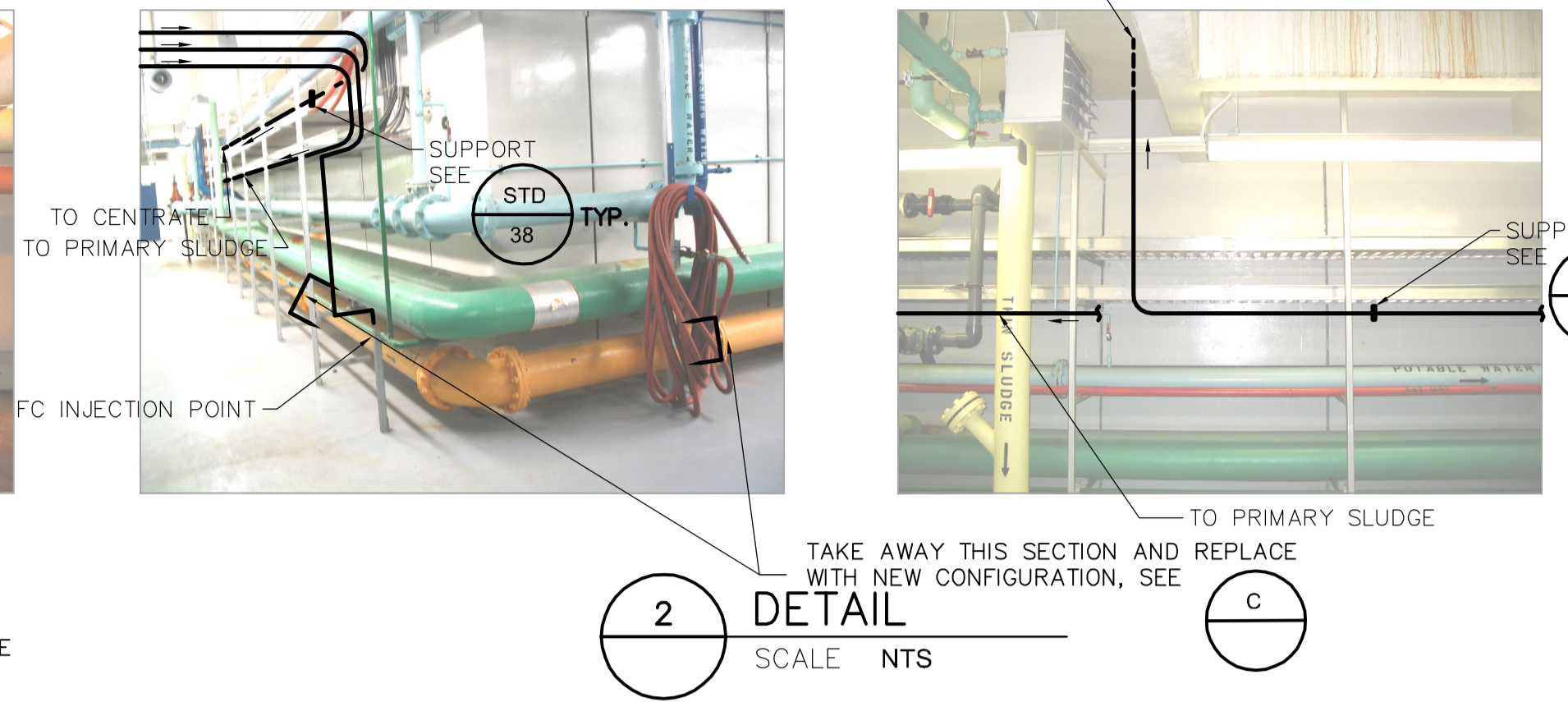
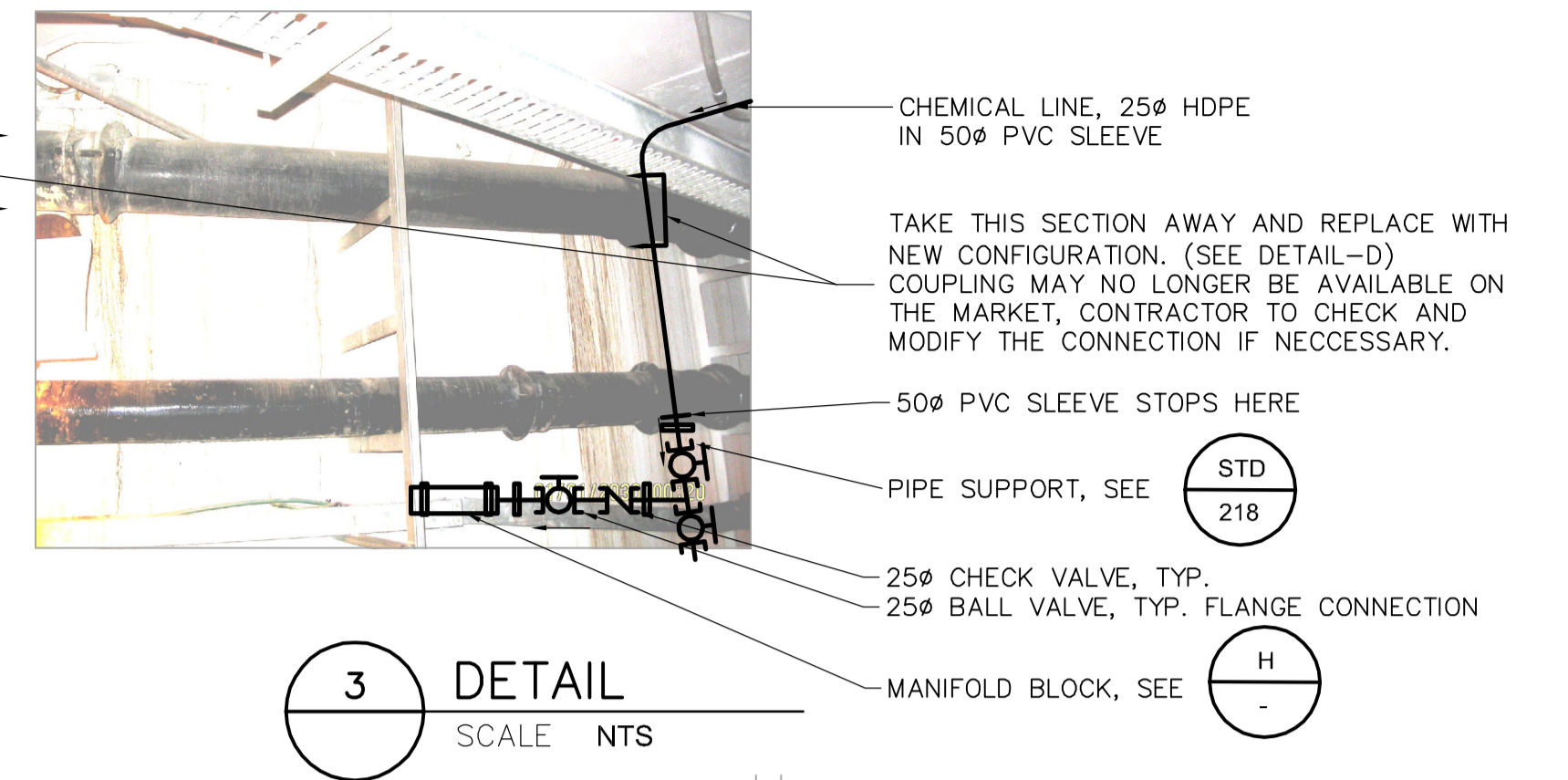


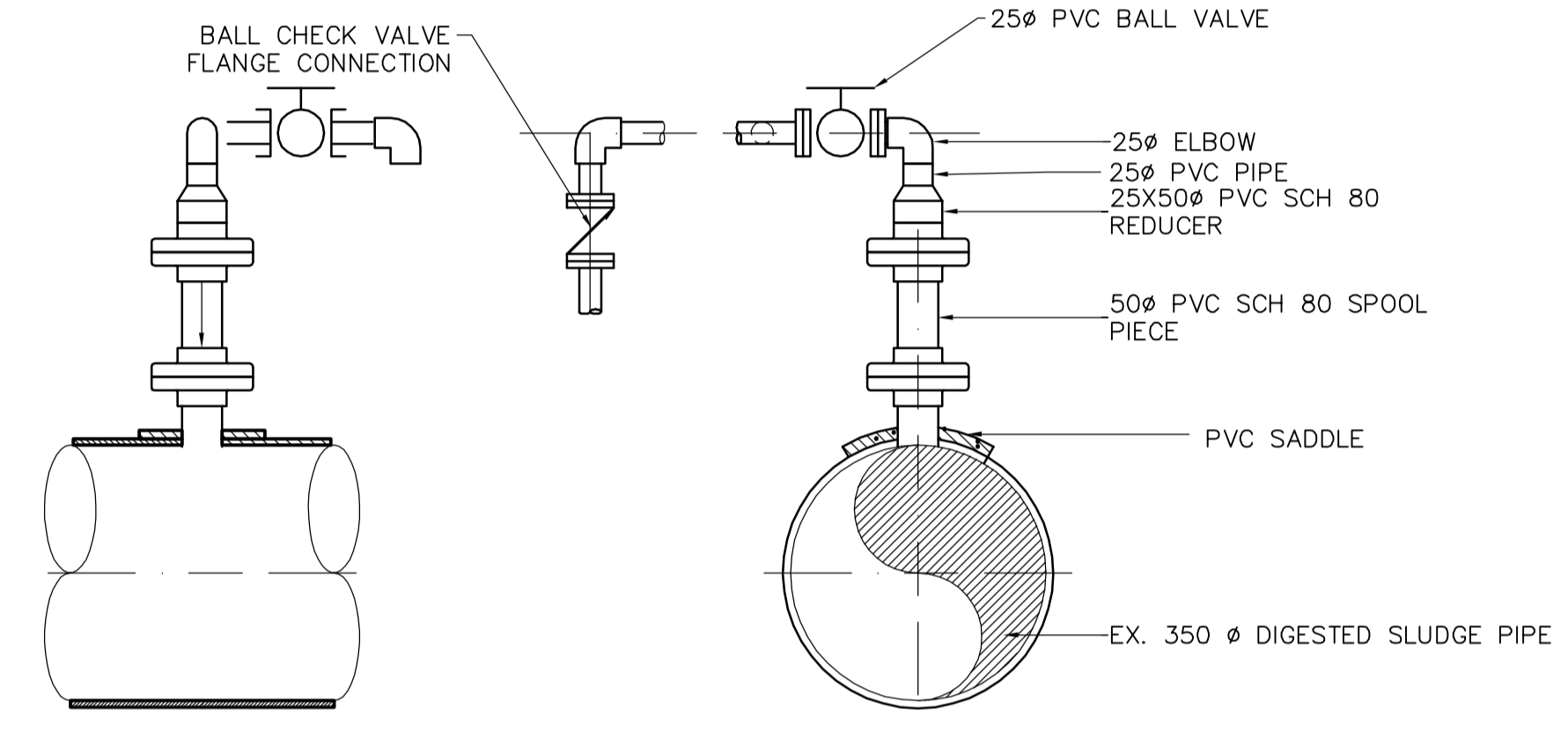
1 DETAIL
SCALE NTS



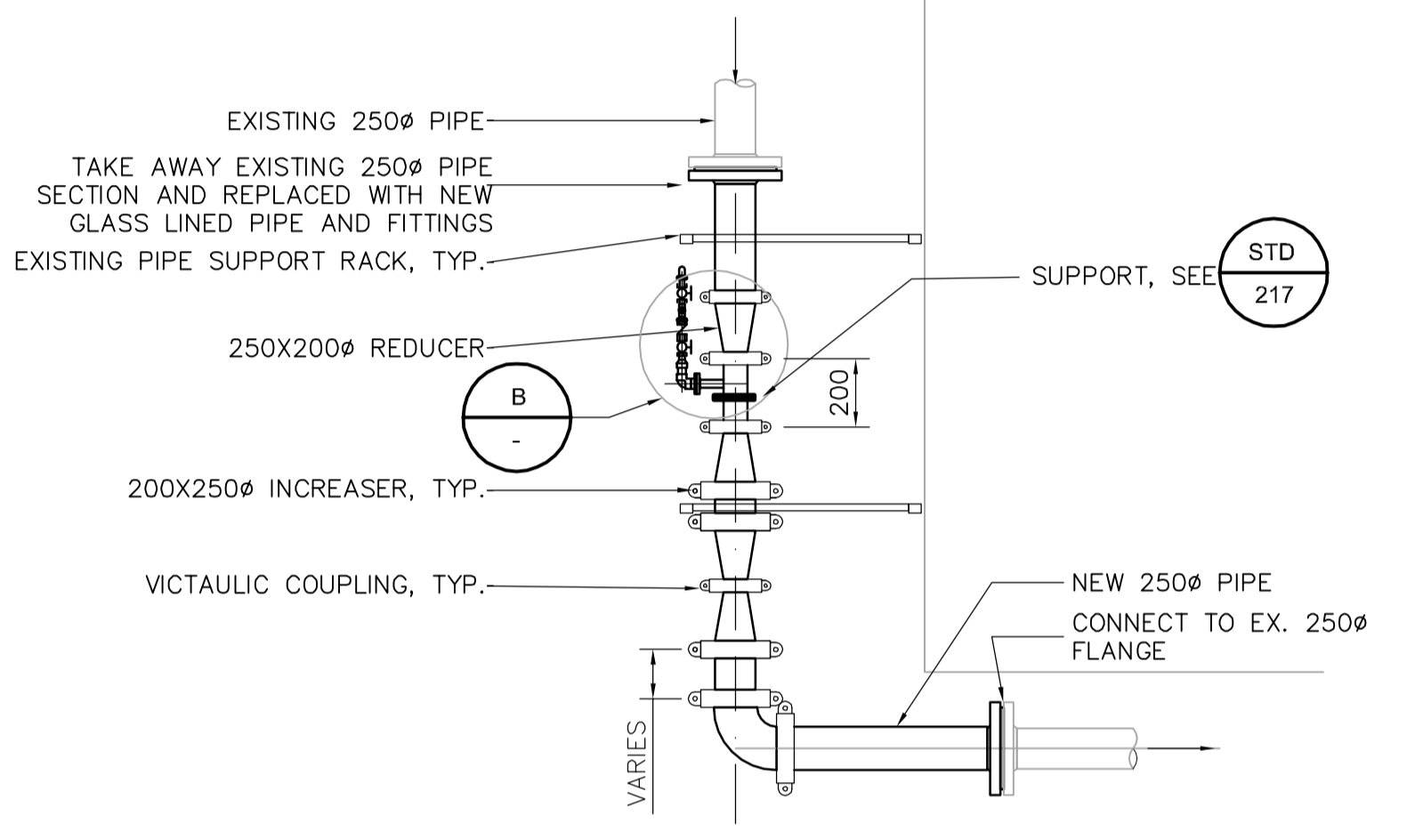
2 DETAIL
SCALE NTS



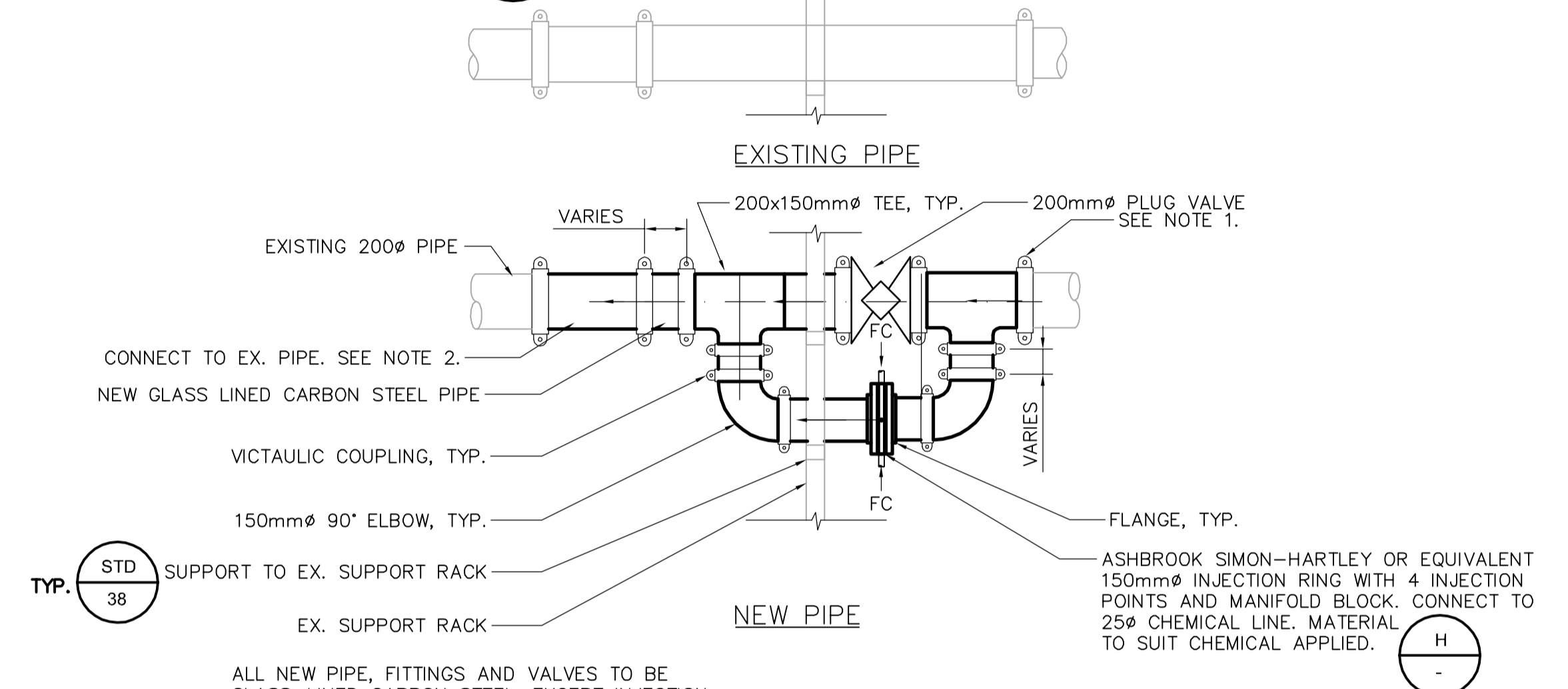
3 DETAIL
SCALE NTS



A DETAIL
SCALE NTS



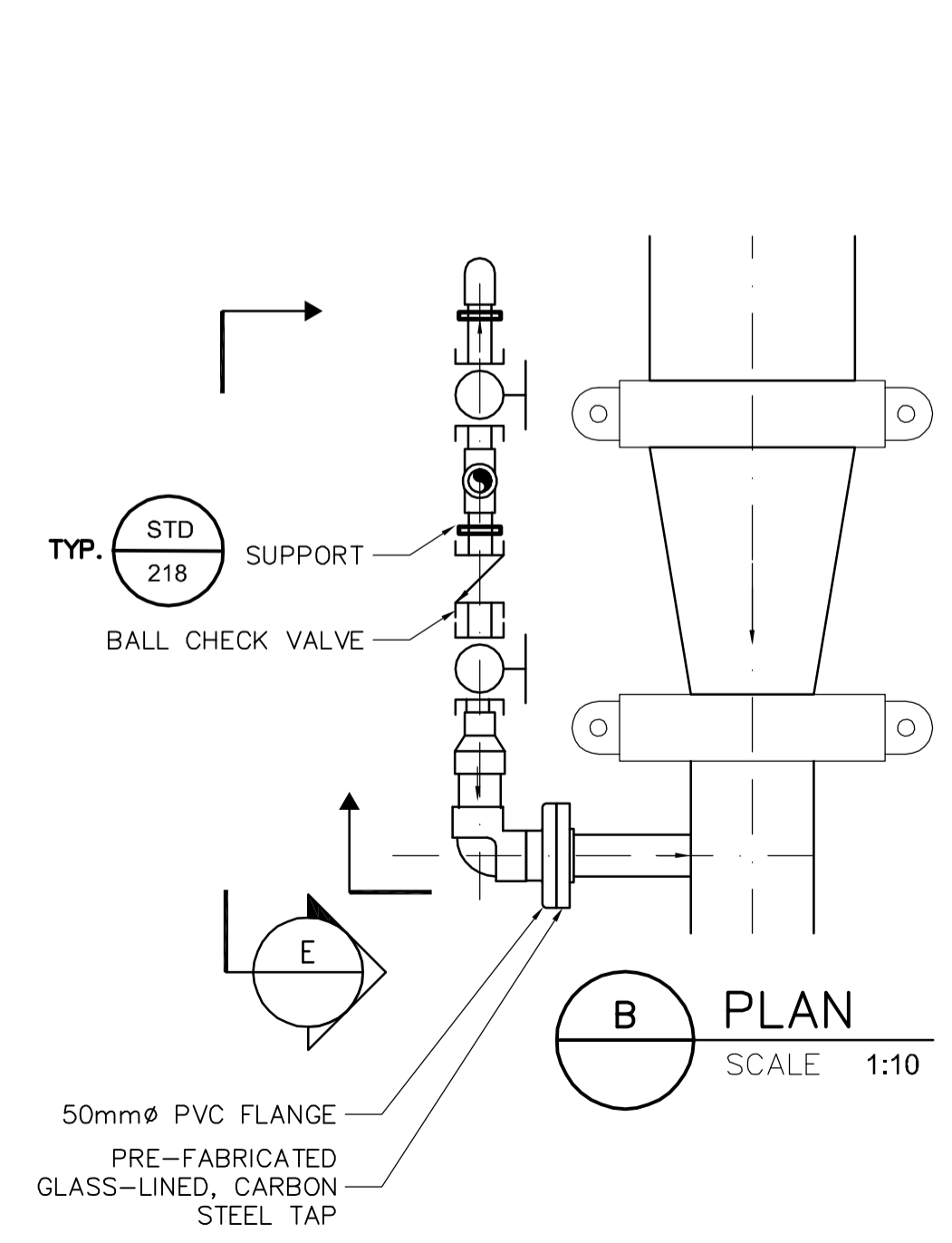
C DETAIL (TOP VIEW)
SCALE 1:50



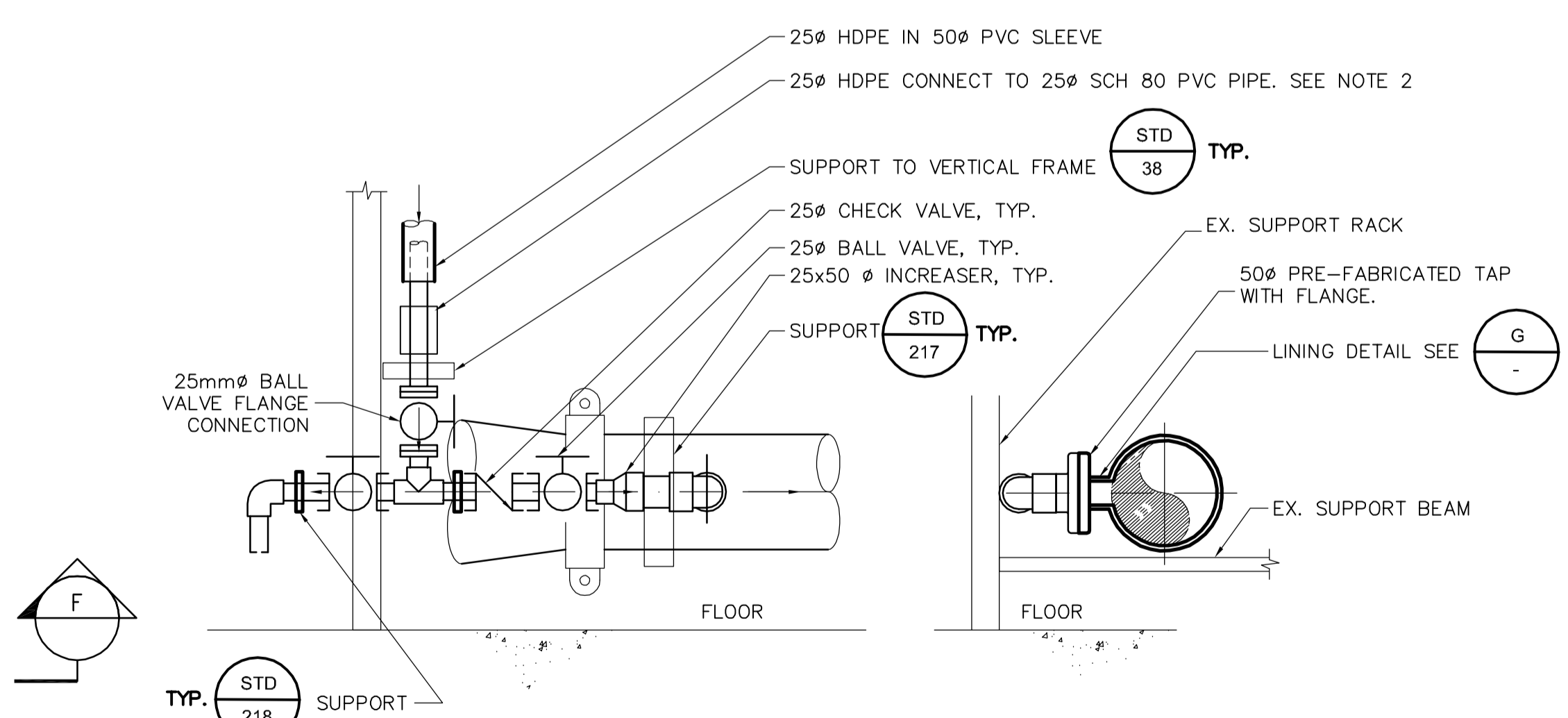
D DETAIL (FRONT VIEW)
SCALE 1:10

ALL NEW PIPE, FITTINGS AND VALVES TO BE GLASS-LINED CARBON STEEL, EXCEPT INJECTION RING AND CHEMICAL LINE.

ALL NEW PIPE, FITTINGS AND VALVES TO BE GLASS-LINED CARBON STEEL EXCEPT CHEMICAL LINE.

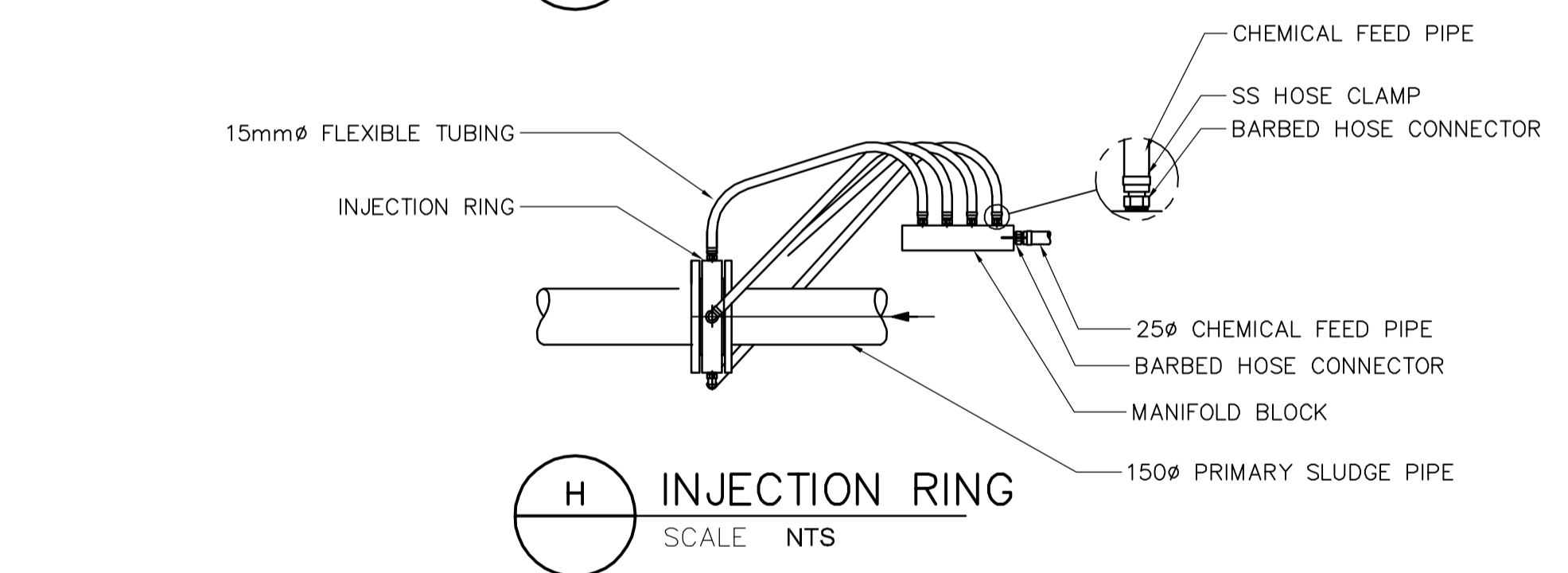


B PLAN
SCALE 1:10

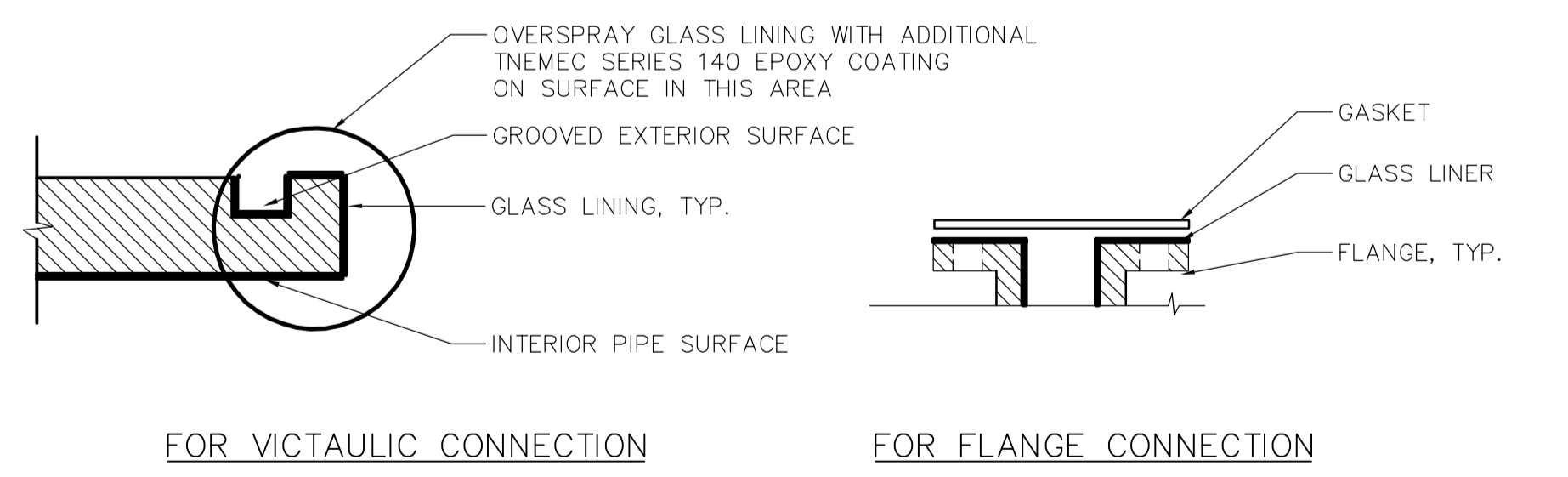


E SECTION
SCALE 1:10

F SECTION
SCALE 1:10



H INJECTION RING
SCALE NTS



G PIPE END GLASS LINING DETAIL
SCALE NTS

- NOTES:
 1. CONTRACTOR TO IDENTIFY EXISTING PIPE TYPE AND SELECT SUITABLE COUPLINGS.
 2. USE PLASTIC PIPE FOR ALL THE COUPLING OF 25 HDPE TUBING TO 25 PVC PIPE: MALE NPT AT THE PVC SIDE AND COMPRESSION FITTING AT THE HDPE SIDE.
 3. CHECK VALVES TO BE PVC BALL CHECK VALVES WITH VITON SEATS, RATED FOR 150 PSI. VALVES TO BE CHEMLINE, HAYWARD TRUE CHECK, OR EQUIVALENT.
 4. ALL NEW VICTAULIC COUPLINGS TO HAVE TEFLON GASKETS.

APEGM
 Certificate of Authorization
 Earth Tech Canada Inc.
 No. 730 Expiry: April 30, 2006

B.M. ELEV.					
DESIGNED BY	LW/SB	CHECKED BY	JEH		
DRAWN BY	GLG	APPROVED BY	D. TANIGUCHI		
SCALE:	AS NOTED	RELEASED FOR CONSTRUCTION BY:	K. MARTENS		
NO.	ISSUED FOR TENDER	DATE	05/12/02	GLG	
NO.	REVISIONS	DATE	2005/07/28	DATE	05/12/02

ENGINEER'S SEAL
 ORIGINAL SIGNED BY
 J.E. HUTCHISON
 2005/12/02
 CONSULTANT DRAWING NO.
 CP6.01

THE CITY OF WINNIPEG
 WATER AND WASTE DEPARTMENT
 ENGINEERING DIVISION
 NEWPCC CENTRATE NUTRIENT TREATMENT
 PHOSPHORUS REMOVAL FACILITY
 CONTRACT No. 1
 PROCESS
 CHEMICAL INJECTION DETAILS
 CITY FILE NUMBER
 SHEET OF
 CITY DRAWING NUMBER
 1-010F-D-P0004-001-00-D