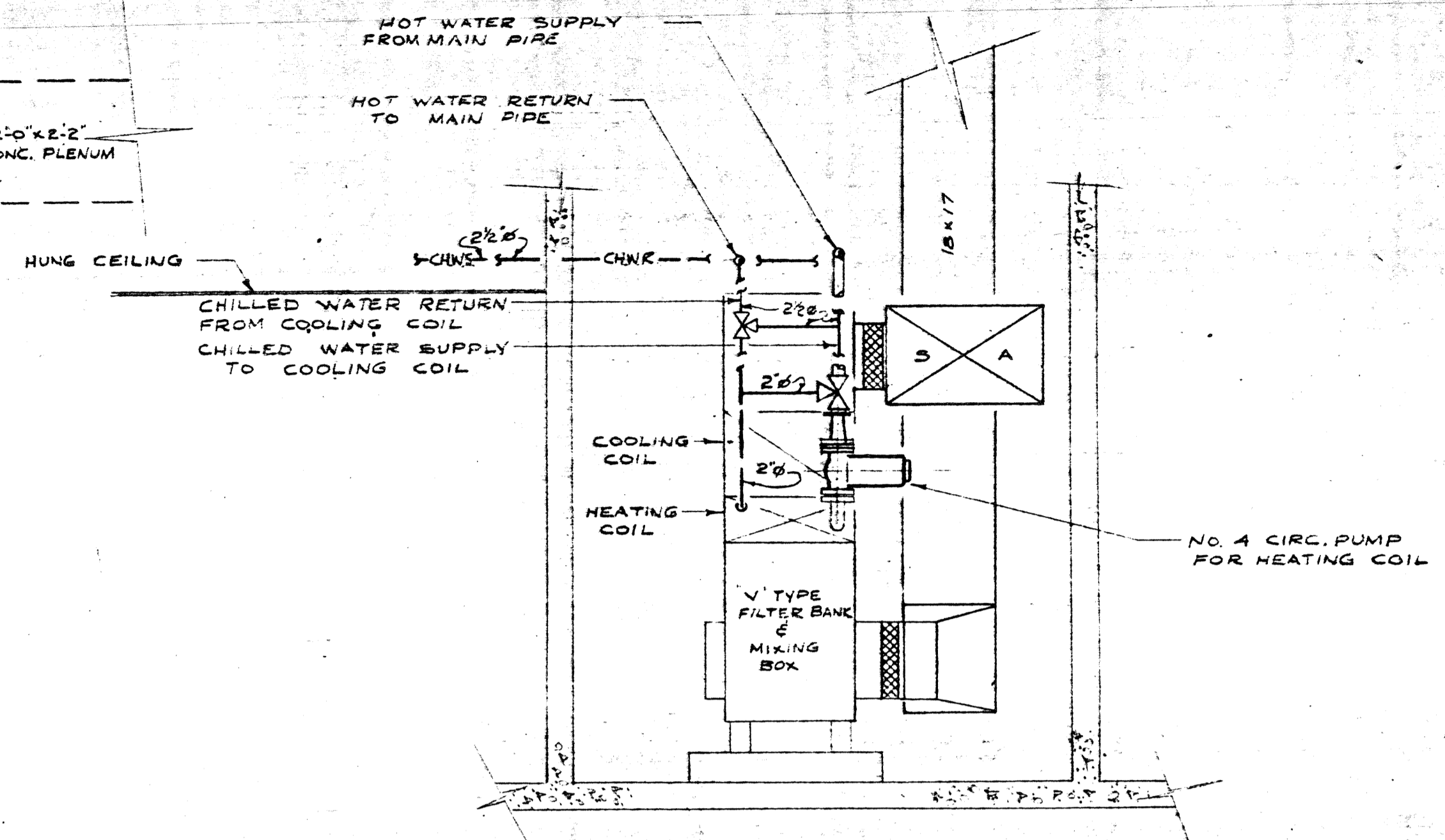
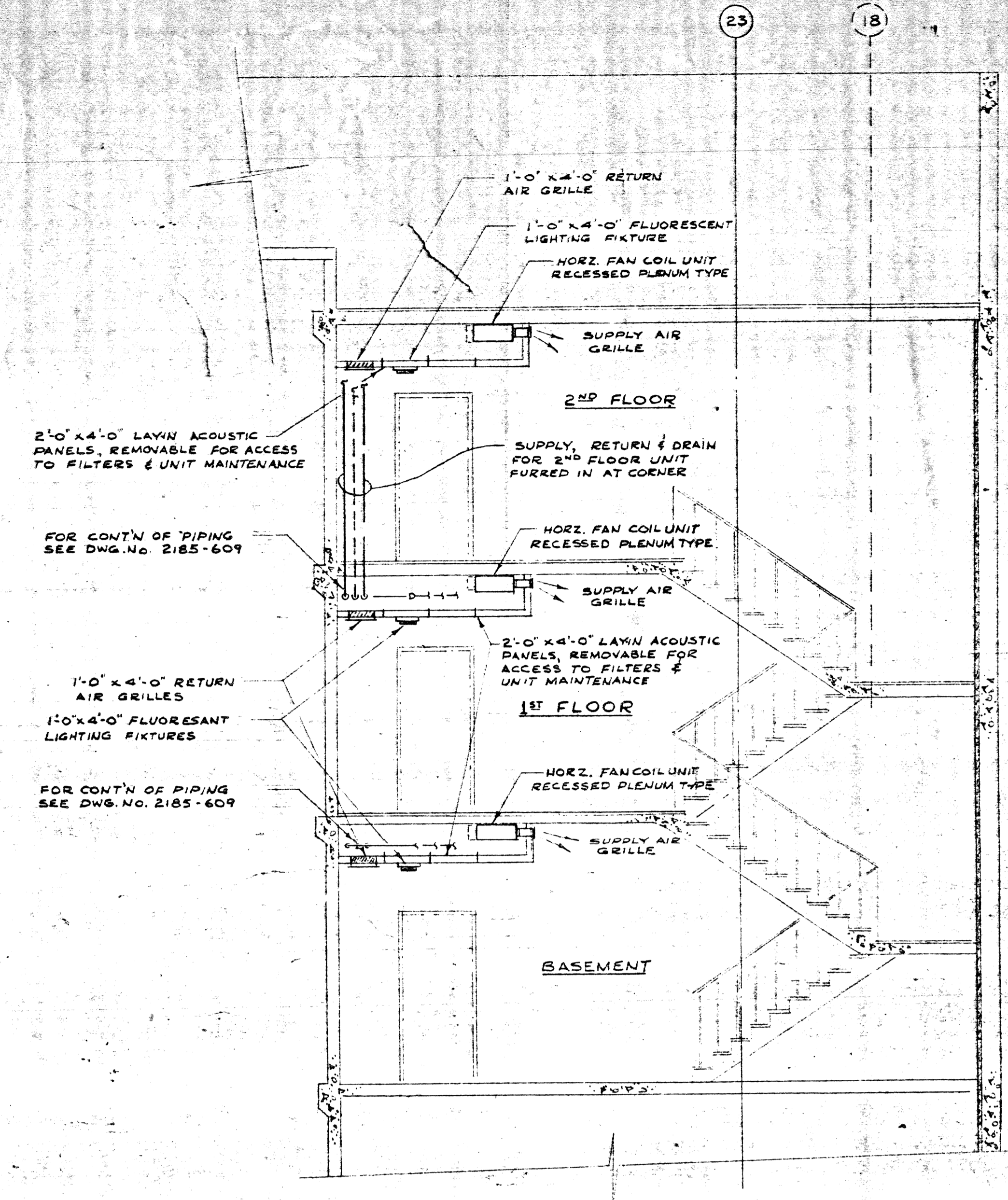


PLAN
SCALE 1/8" = 1'-0"

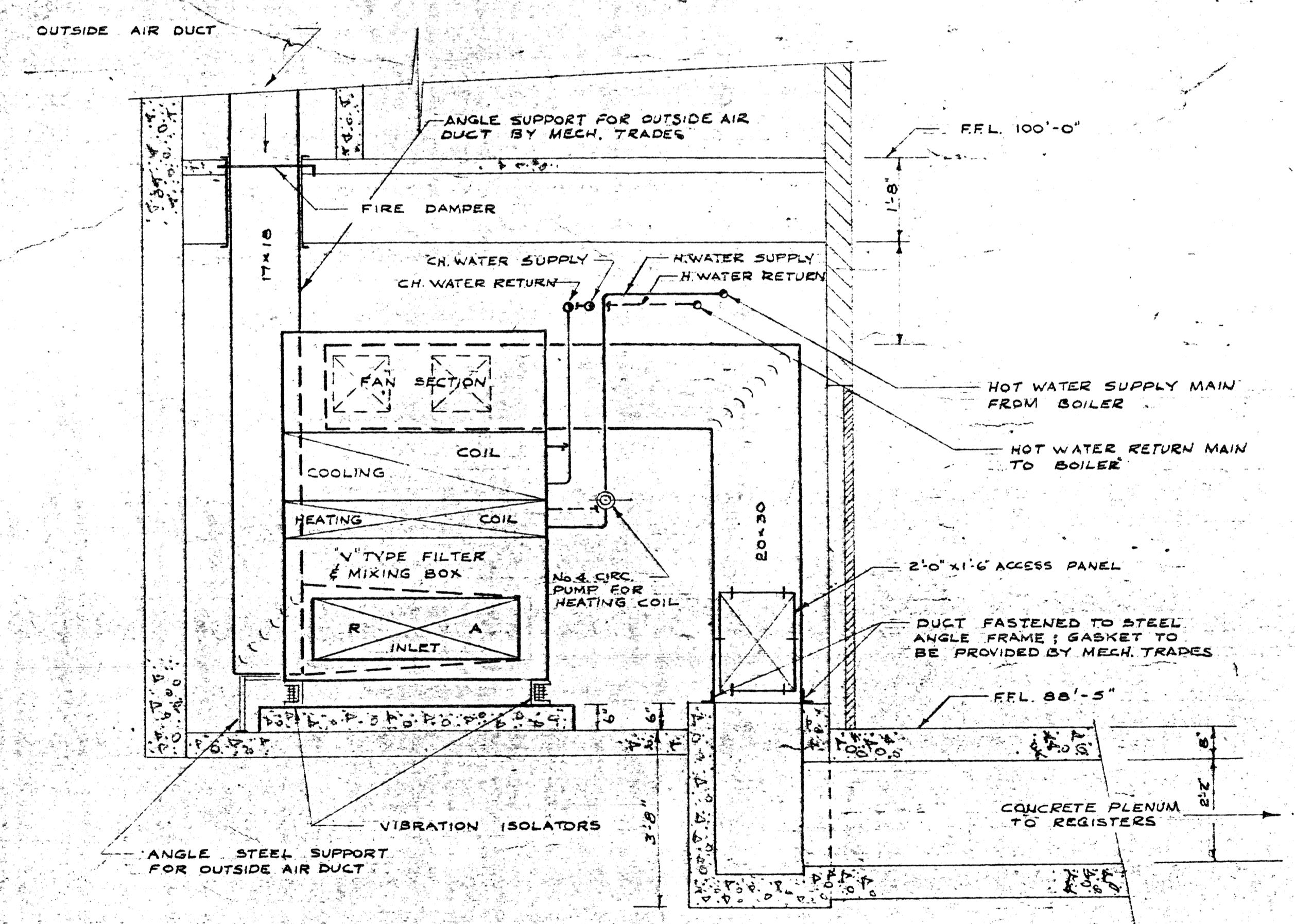


SECTION A-A
SCALE 1/8" = 1'-0"



SECTION B-B
SCALE 1/8" = 1'-0"

NOTE: APPLICABLE TO STAIRHALL #5
IN REVERSE LAYOUT



ELEVATION
SCALE 1/8" = 1'-0"

LAYOUT OF MECHANICAL ROOM IN THE
BASEMENT OF OFFICE BUILDING

2185-612

19/1/67	J.T.	FOR TENDER	
29/6/67	J.T.	FOR APPROVAL	
DATE	ISSUE	REV.	DESCRIPTION
			ISSUE OR REVISION
METROPOLITAN CORPORATION OF GREATER WINNIPEG STREETS AND TRANSIT DIVISION			
TRANSIT STORAGE AND SHOP FACILITIES			
ADMINISTRATION BUILDING			
MECHANICAL EQUIPMENT - LAYOUT & DETAILS			
CONSULTING PROFESSIONAL ENGINEERS A. D. MARGISON AND ASSOCIATES LIMITED 1155 LESLIE STREET, DON MILLS, ONTARIO		ARCHITECTS Waltman Ross & Blankstein Coop Gillmor Hanna 10 DONALD STREET, WINNIPEG, MANITOBA	
APPROVED	DATE	SCALE	AS SHOWN
<i>J.T.</i>	AUGUST '67	AS SHOWN	
LICENSED TO PRACTICE IN THE PROVINCE OF MANITOBA My License Expires: 10 Jan 1968	FILE NO.	2185-612	MECHANICAL