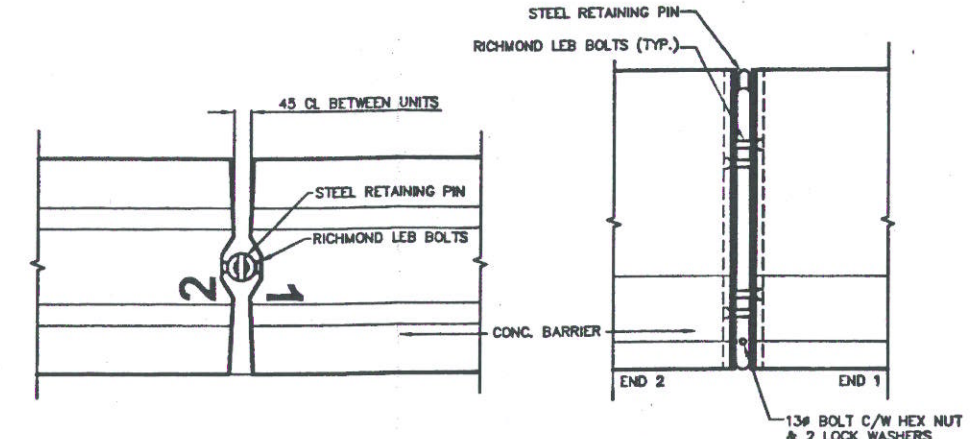
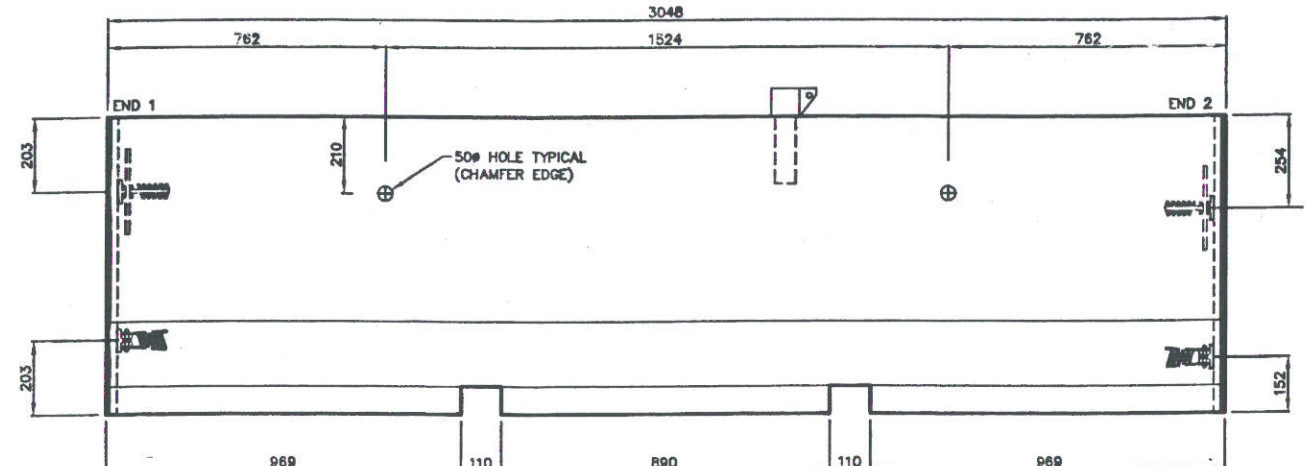


PLAN

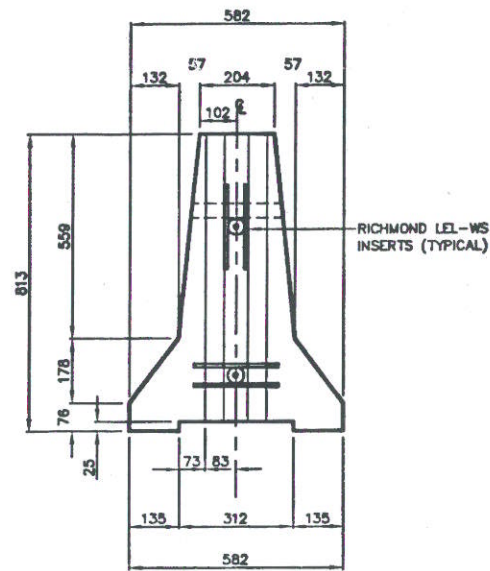


INSTALLATION OF BARRIERS DETAIL

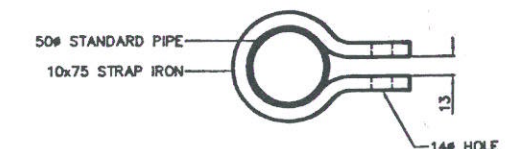
NOTE: CONNECT END 1 TO END 2 USING RETAINING PIN & 13# BOLT



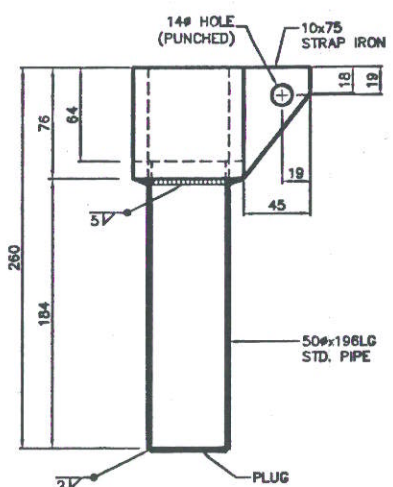
ELEVATION
SHOWING CONC. DETAILS



END VIEW

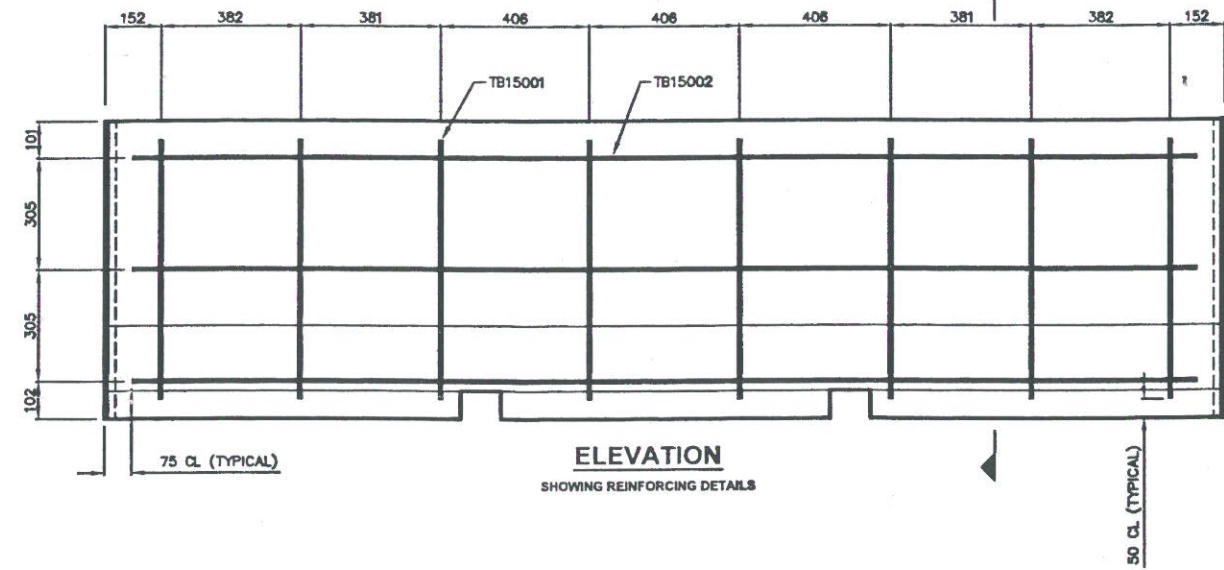


PLAN OF POST CLAMP INSERT DETAIL

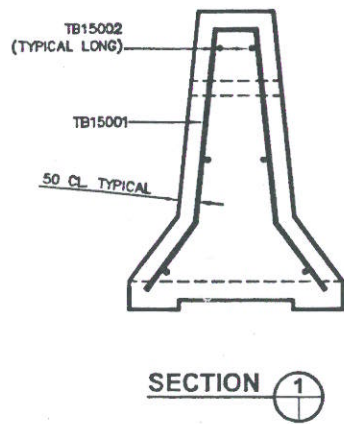


ELEVATION OF POST CLAMP INSERT
POST CLAMP INSERT DETAIL

SCALE 1:25
NOTE: FOR BARRIER CAST UPSIDE DOWN
POST INSERTS MAY BE GROUTED INTO 70# FORMED HOLE.



ELEVATION
SHOWING REINFORCING DETAILS

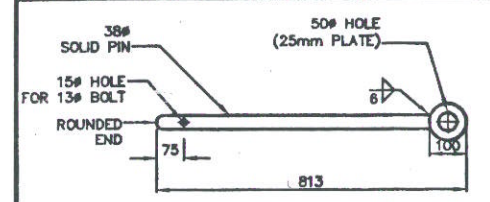


SECTION 1

METRIC
WHOLE NUMBERS INDICATE MILLIMETRES
DECIMALIZED NUMBERS INDICATE METRES

BILL OF REINFORCING STEEL FOR ONE CONC. BARRIER UNIT				
MARK	TYPE	LENGTH	NO. PER UNIT	BENDING DIAGRAM
TB15001	BENT	1600	8	
TB15002	STRAIGHT	2895	6	
ALL REINFORCING STEEL GRADE 400 MPa				
VOLUME OF CONC. PER UNIT = 0.79 m ³				
MASS OF EACH UNIT = 1890kg				

BILL OF MISCELLANEOUS METAL FOR ONE CONC. BARRIER UNIT	
NO.	DESCRIPTION
4	RICHMOND LEB-WS END LIFT INSERT FOR 25# LEB
4	RICHMOND LEB EYE BOLT 25#x75 LONG
1	38#x813 STEEL RETAINING PIN (SEE DETAIL)
1	13#x75 LG BOLT C/W HEX NUT & 2 LOCK WASHERS
2	25#x25 LG SOCKET HEAD SCREWS
1	POST CLAMP INSERT (SEE DETAIL)



STEEL RETAINING PIN DETAIL

NOTE: ALL MATERIAL IN THIS BILL TO BE COMPLETELY GALVANIZED AFTER FABRICATION

- GENERAL NOTES:
- CONCRETE SPECIFIED COMPRESSIVE STRENGTH @ 28 DAYS = 40MPa
MAX. W/C RATIO = 0.4
AGGREGATE = 20mm NOMINAL
AIR CONTENT = 5 TO 8%
 - STEEL FORM FINISH UNLESS OTHERWISE APPROVED.
 - MINIMUM CHAMFER ON ALL EDGES 13mm.
 - REBAR TO BE GRADE 400 MPa.
 - UNITS ARE DESIGNED TO BE INSTALLED BY HAVING AN END "1" CONNECTED TO AN END "2".
 - UNIT NO.'S TO START WITH 2 DIGIT YEAR DESIGNATION FOLLOWED BY 2 DIGIT PRODUCTION NO. (PRODUCTION UNIT NO. SHOWN IS FOR ILLUSTRATIVE PURPOSE ONLY).

NO.	REVISIONS	DATE	BY	DATE
1	MODIFIED STEEL RETAINING PIN DETAIL END RING HOLE FROM 25mm TO 30mm WITH THE OVERALL OUTSIDE DIAMETER OF THE RING REMAINING TO 100mm	06/12/18	AP	

DESIGNED BY	CHECKED BY
DRAWN BY AP 03-09-18	APPROVED BY
HOR. SCALE: 1:10	RELEASED FOR CONSTRUCTION
VERTICAL: OR AS NOTED	DATE

THE CITY OF WINNIPEG
PUBLIC WORKS DEPARTMENT
TRANSPORTATION DIVISION

PRECAST CONCRETE PORTABLE TRAFFIC BARRIER

CONSULTANT DRAWING NO.

SHEET OF

CAD FILE DRAWING NUMBER

CITY DRAWING NUMBER
CW-315