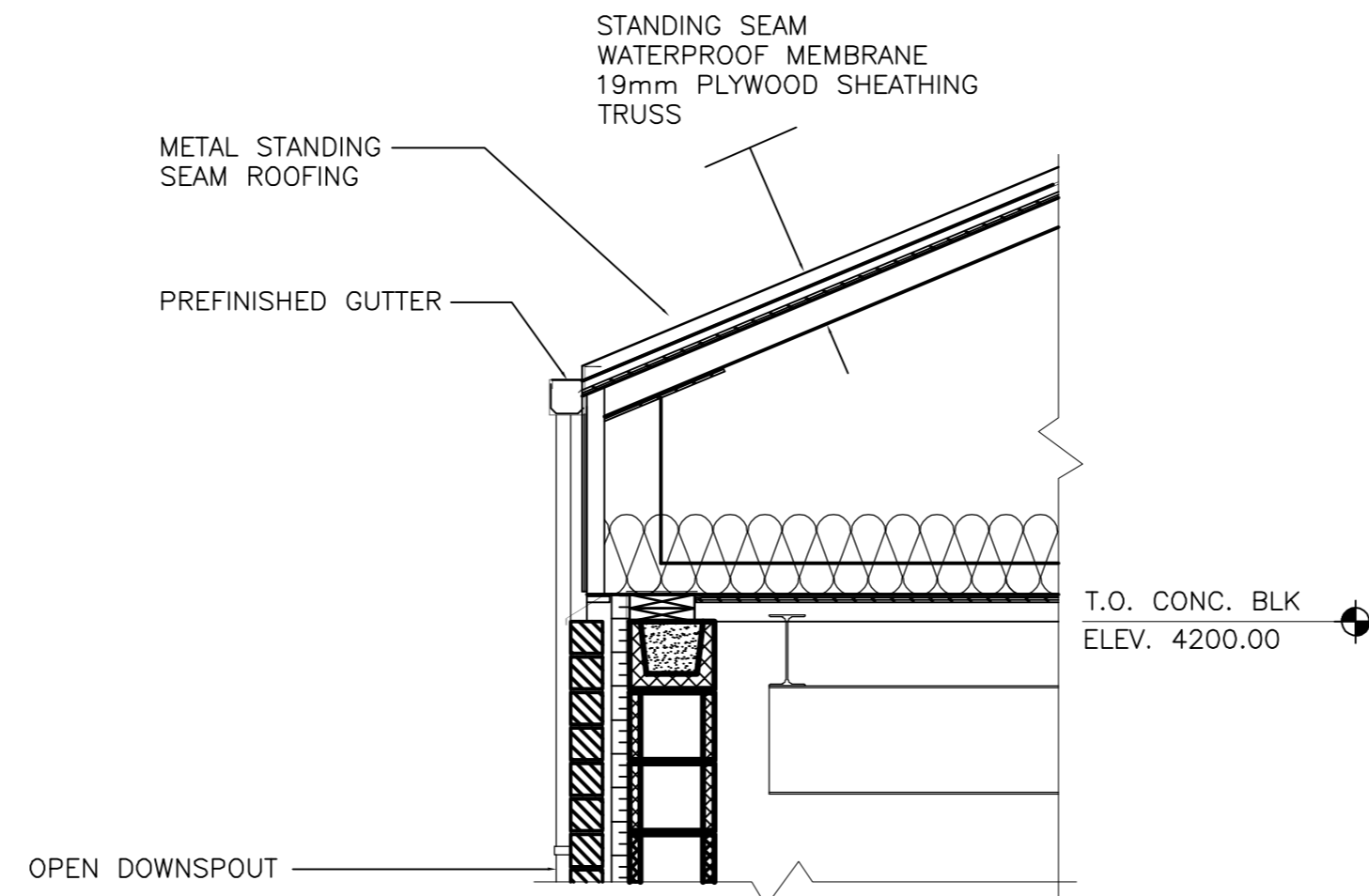
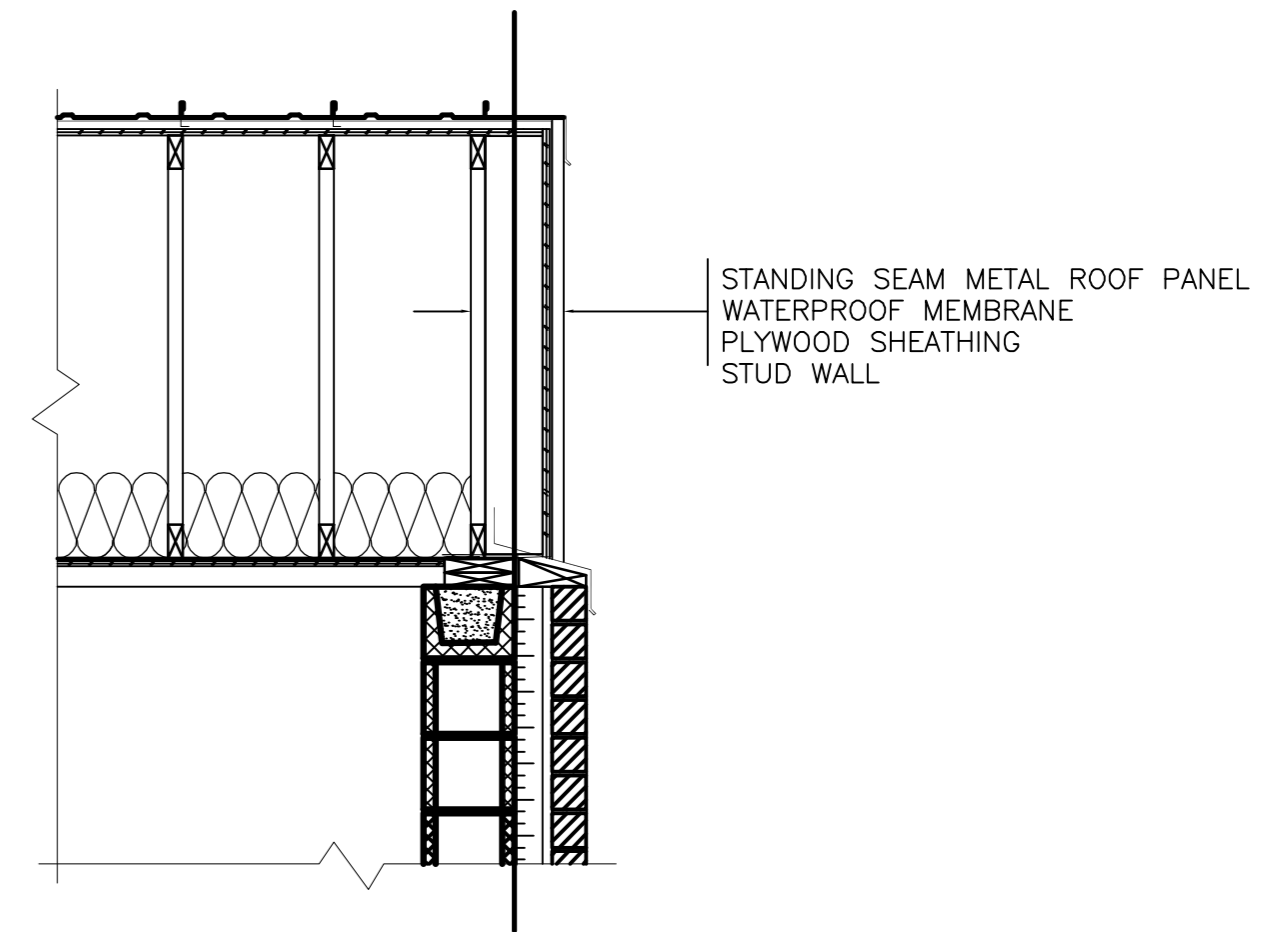


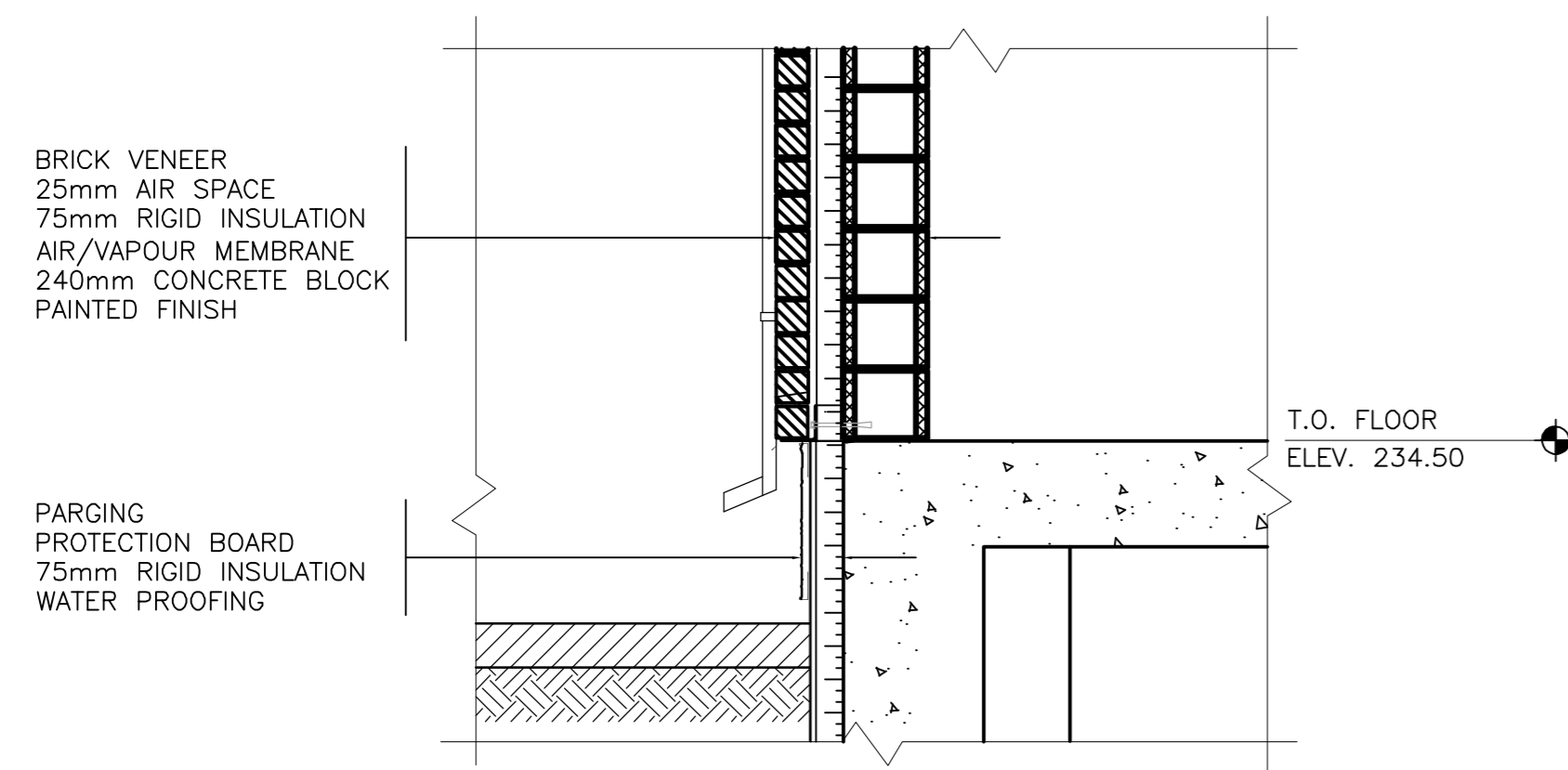
1 WALL/ROOF
DETAIL
A01 A03
1:20



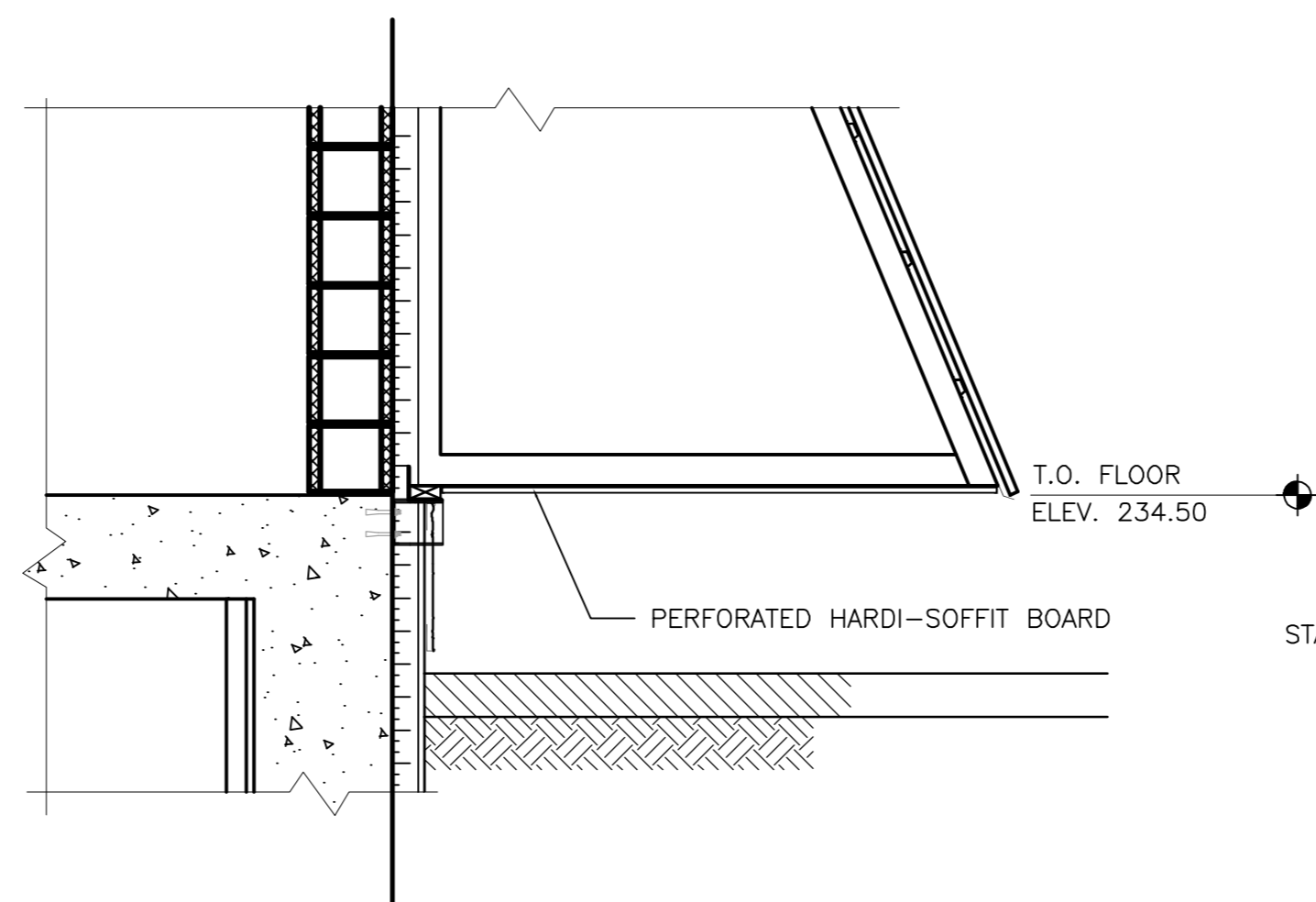
2 WALL/ROOF
DETAIL
A01 A03
1:20



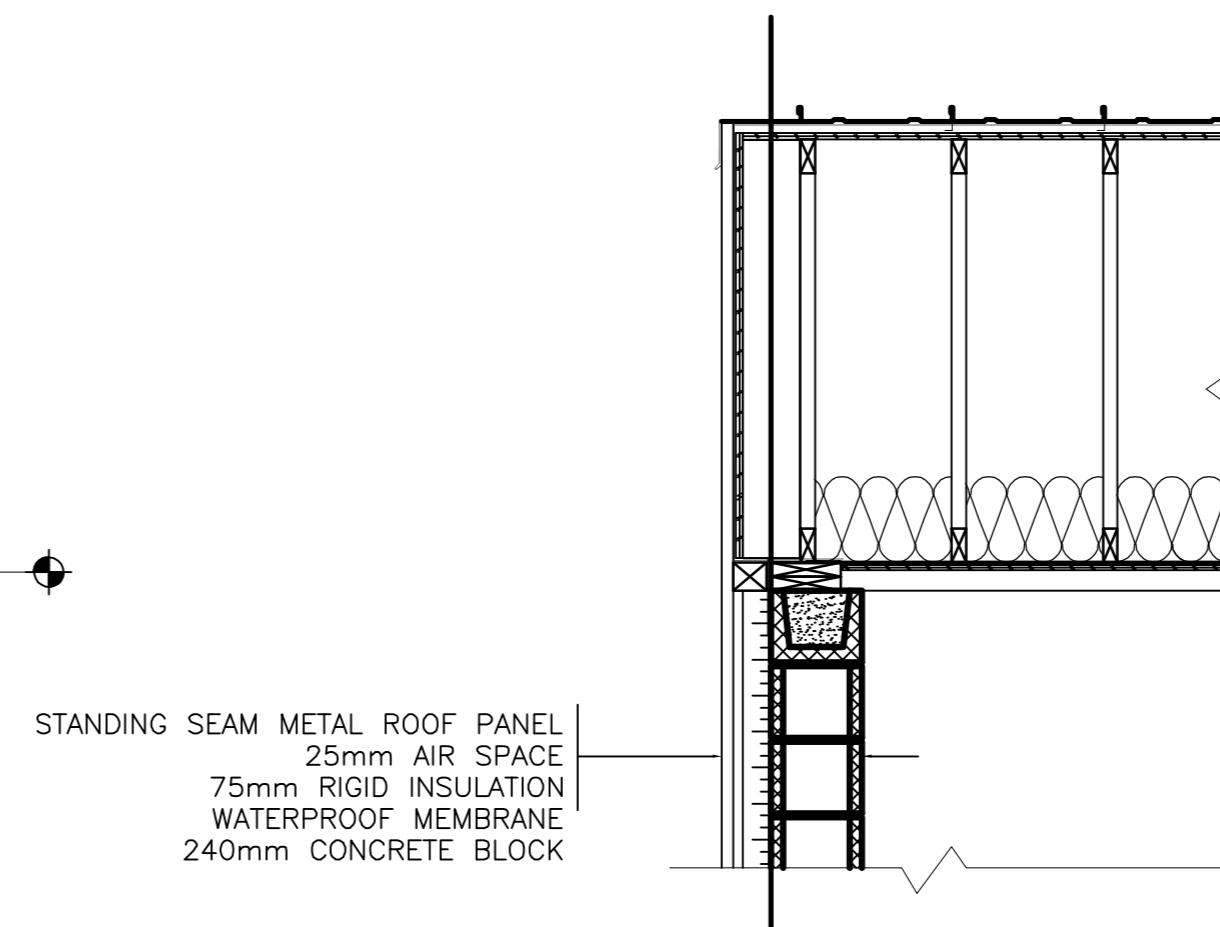
3 WALL/ROOF
DETAIL
A02 A03
1:20



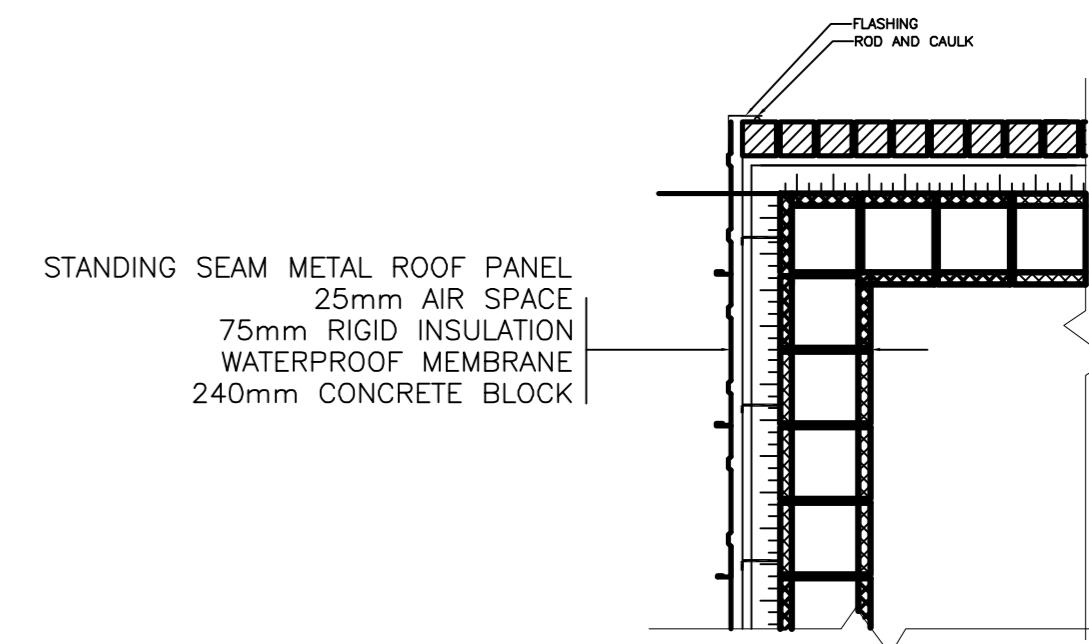
4 WALL
DETAIL
A01 A03
1:20



5 WALL
DETAIL
A01 A03
1:20



6 WALL/ROOF
DETAIL
A02 A03
1:20



7 CORNER
DETAIL
A01 A03
1:20

LOCATION APPROVED UNDERGROUND STRUCTURES			B.M. ELEV.
SUPV. U/G STRUCTURES COMMITTEE	DATE		
NOTE: LOCATION OF UNDERGROUND STRUCTURES AS SHOWN ARE BASED ON THE BEST INFORMATION AVAILABLE BUT NO GUARANTEE IS GIVEN THAT THE GIVEN LOCATIONS ARE EXACT. CONFIRMATION OF EXISTENCE AND EXACT LOCATION OF ALL SERVICES MUST BE OBTAINED FROM THE INDIVIDUAL UTILITIES BEFORE PROCEEDING WITH CONSTRUCTION.			
2	ISSUED FOR TENDER	05.12.09	RD
1	ISSUED FOR CLIENT REVIEW	05.11.24	RD
0	ISSUED FOR CLIENT REVIEW	05.10.19	RD
NO.	REVISIONS	DATE	BY

Stantec Consulting Ltd.		ENGINEER'S SEAL	
905 Waverley Street, Winnipeg, Manitoba Tel 204-489-5900 Fax 204-453-9012		ORIGINAL SEALED BY Verne Reimer ARCHITECT 05.12.09	
DESIGNED BY: RD	CHECKED BY: AJR	CONSULTANT DRAWING NO. 113703042-A03	
DRAWN BY: MI/BJM/BL	APPROVED BY: AJR		
HOR. SCALE: AS SHOWN		AUTHORIZED BY: R. FINGAS 05.12.09	
VERTICAL:		R. FINGAS, P. ENG. BRIDGE PROJECTS ENGINEER	
DATE	05.10.13		

THE CITY OF WINNIPEG PUBLIC WORKS DEPARTMENT ENGINEERING DIVISION		SHEET 13 OF 25
KENASTON UNDERPASS KENASTON UNDERPASS PUMPING STATION		CAD FILE DRAWING NUMBER 113703042-A01.dwg
ARCHITECTURAL -ROOF AND WALL SECTIONS		CITY DRAWING NUMBER P-3256-157

METRIC
WHOLE NUMBERS INDICATE MILLIMETRES
DECIMALIZED NUMBERS INDICATE METRES