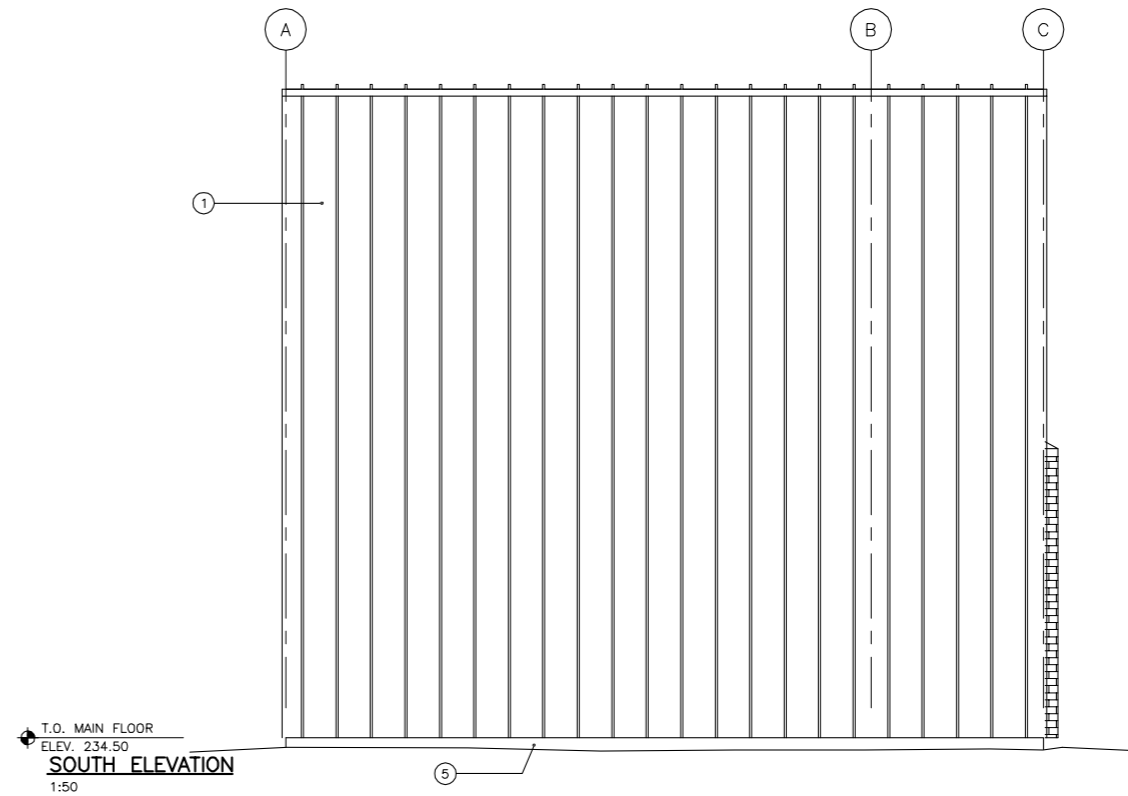
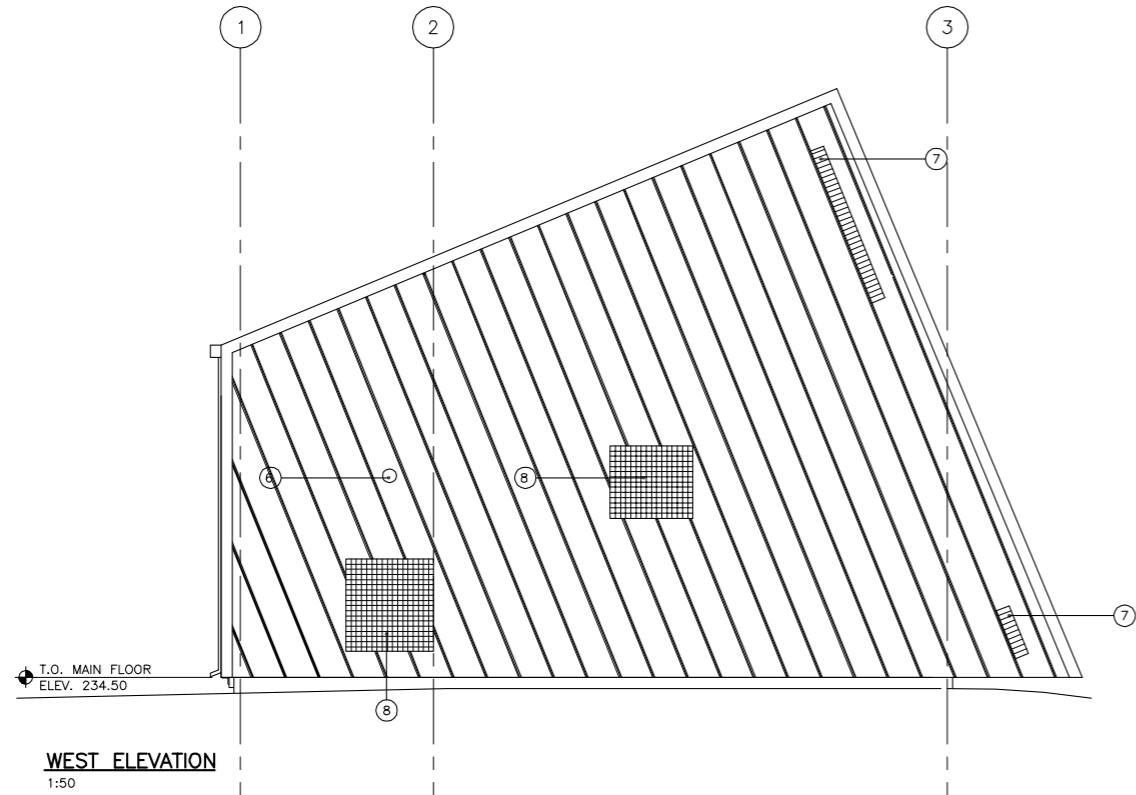


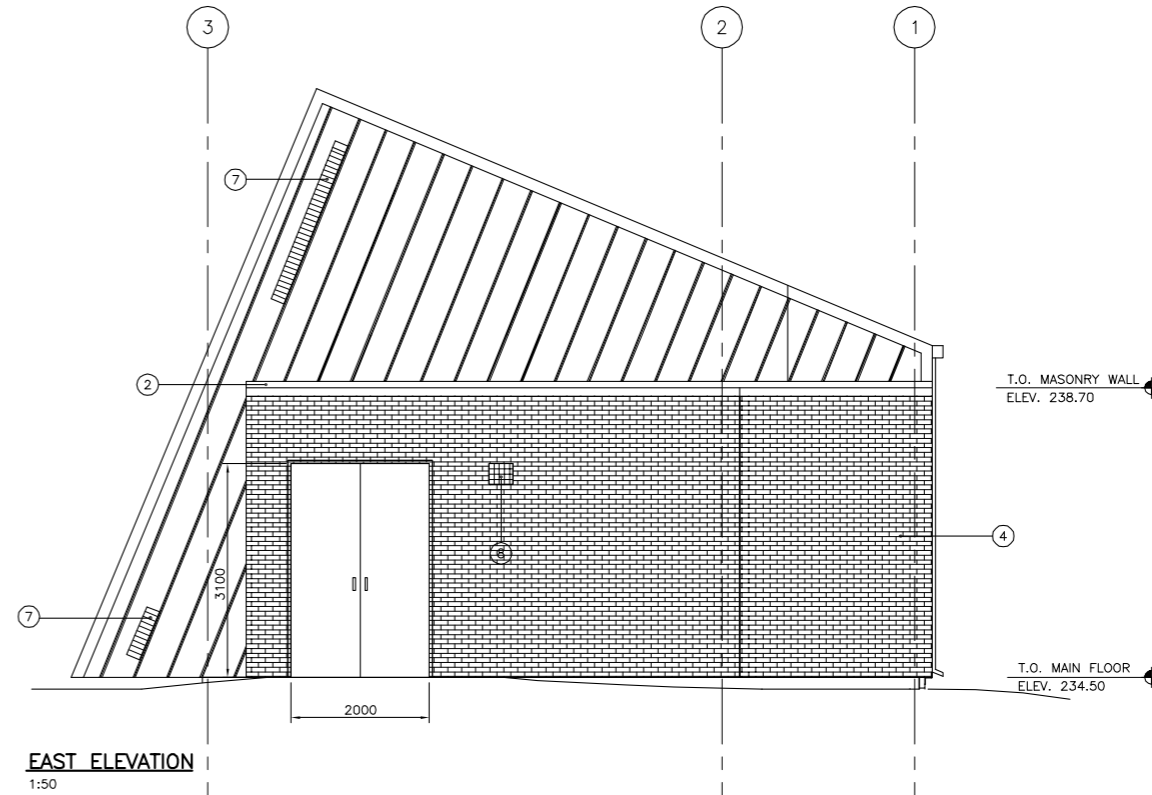
NORTH ELEVATION
1:50



SOUTH ELEVATION
1:50



WEST ELEVATION
1:50



EAST ELEVATION
1:50

KEY NOTES

- 1 STANDING SEAM METAL ROOF
- 2 PRE-FINISHED FLASHING
- 3 RAINWATER DOWNPIPE
- 4 MASONRY-GIANT BRICK
- 5 PARGED FOUNDATION
- 6 EXHAUST
- 7 LOUVRE
- 8 MECHANICAL LOUVRE

METRIC
WHOLE NUMBERS INDICATE MILLIMETRES
DECIMALIZED NUMBERS INDICATE METRES

LOCATION APPROVED UNDERGROUND STRUCTURES

SUPV. U/G STRUCTURES COMMITTEE	DATE

NOTE:
LOCATION OF UNDERGROUND STRUCTURES AS SHOWN ARE BASED ON THE BEST INFORMATION AVAILABLE BUT NO GUARANTEE IS GIVEN THAT ALL EXISTING UTILITIES ARE SHOWN OR THAT THE GIVEN LOCATIONS ARE EXACT. CONTRIBUTION OF EXISTENCE AND EXACT LOCATION OF ALL SERVICES MUST BE OBTAINED FROM THE INDIVIDUAL UTILITIES BEFORE PROCEEDING WITH CONSTRUCTION.

B.M. ELEV.	DATE	BY

		Stantec Consulting Ltd.		ENGINEER'S SEAL	
		905 Waverley Street, Winnipeg, Manitoba Tel 204-489-5900 Fax 204-453-9012		ORIGINAL SEALED BY Verne Reimer ARCHITECT 05.12.09	
DESIGNED BY: RD	CHECKED BY: AJR	AUTHORIZED BY: R. FINGAS, P. ENG. BRIDGE PROJECTS ENGINEER		CONSULTANT DRAWING NO. I13703042-A05	
DRAWN BY: MI/BJM/BL	APPROVED BY: AJR	DATE: 05.12.09		CITY DRAWING NUMBER P-3256-159	
HOR. SCALE: AS SHOWN		DATE: 05.10.13		SHEET 15 OF 25	
VERTICAL:		DATE: 05.10.13		CAD FILE DRAWING NUMBER 113703042-A05.dwg	
NO. REVISIONS		DATE BY		ARCHITECTURAL - ELEVATIONS	

THE CITY OF WINNIPEG
PUBLIC WORKS DEPARTMENT
ENGINEERING DIVISION

KENASTON UNDERPASS
KENASTON UNDERPASS PUMPING STATION