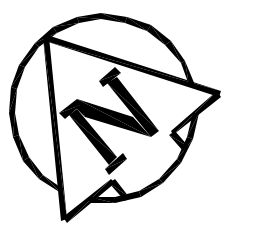
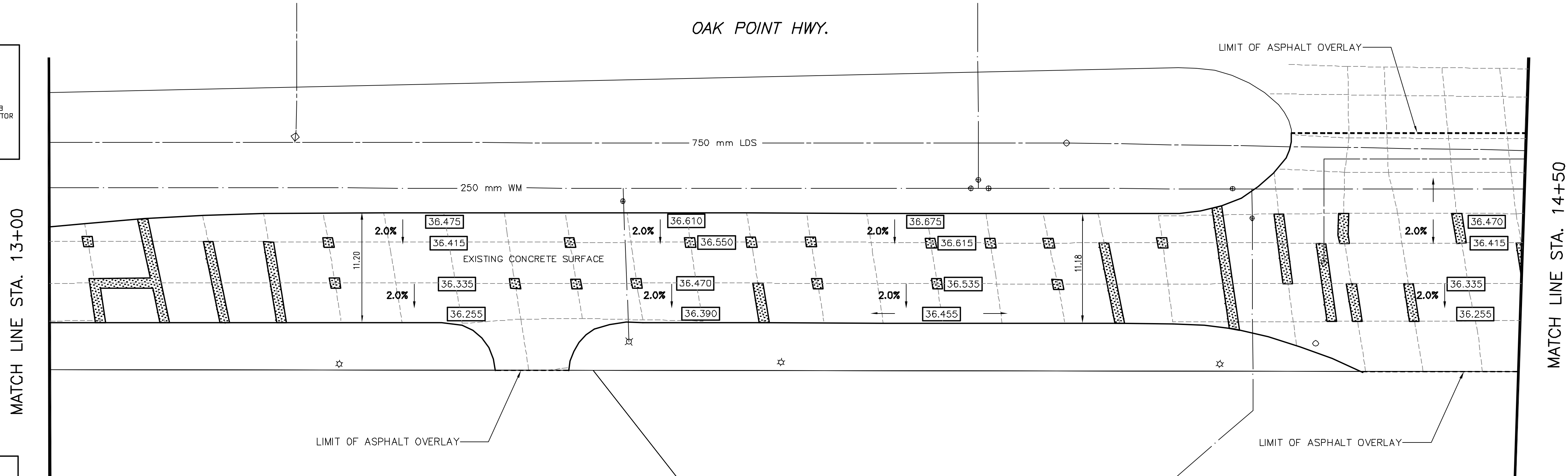


ALL CHAINAGES ARE MEASURED ALONG THE EAST GUTTER LINE OF OAK POINT HIGHWAY

- CONSTRUCTION NOTES**
- 1) CURB REPLACEMENT AS DIRECTED BY THE CONTRACT ADMINISTRATOR
 - 2) ALL STREET RADIUS CURB UNDER 15M RADIUS SHALL BE REPLACED AS MODIFIED BARRIER CURB OR AS DIRECTED BY THE CONTRACT ADMINISTRATOR
 - 3) PAVEMENT REPAIRS SHOWN ARE ONLY A REPRESENTATIVE SAMPLE OF THE TENDERED QUANTITIES



- WARNING**
- IF POWER EQUIPMENT OR EXPLOSIVES ARE TO BE USED FOR EXCAVATION ON THIS PROJECT THE CONTRACTOR MUST:
- 1) OBTAIN CLEARANCE FROM THE GAS UTILITY PRIOR TO EXCAVATION.
 - 2) TAKE PRECAUTION TO AVOID DAMAGE TO GAS UTILITY INSTALLATIONS.
- SEE PROVINCIAL REGULATION 210/72 FOR DETAILS

METRIC
WHOLE NUMBERS INDICATE MILLIMETRES
DECIMALIZED NUMBERS INDICATE METRES

BID OPP.# 65-2005

150 mm WM	WATERMAIN	150 mm WM	HYDRO	150 mm WM	WATERMAIN
+	HYDRANT	+	MTS	+	HYDRANT
o	VALVE	o	CONCRETE	+	VALVE
300 mm LDS	LAND DRAINAGE SEWER	300 mm LDS	LIMIT OF ASPHALT	X	SEWER
250 mm WWS	WASTE WATER SEWER	250 mm WWS	CURB RENEWAL	300 mm LDS	300 mm LDS
o	MANHOLE	o	CONCRETE REPAIRS		
□	CATCH BASIN	●	ELEVATIONS		
△	CURB INLET	▲	PROPERTY LINE		
☆	WOOD POLES	⊕	SURVEY BAR		
○	LAMP STANDARD	⊙	CURB STOP		
---	GAS	---	RAMP CURB		
EXISTING	LEGEND - PLAN	PROPOSED	EXISTING	LEGEND - PROFILE	PROPOSED

LOCATION APPROVED UNDERGROUND STRUCTURES

SUPR. U/G STRUCTURES DATE COMMITTEE

NOTE:
LOCATION OF UNDERGROUND STRUCTURES AS SHOWN ARE BASED ON THE BEST INFORMATION AVAILABLE. BUT NO GUARANTEE IS GIVEN THAT ALL EXISTING UTILITIES ARE SHOWN OR THAT THE GIVEN LOCATIONS ARE EXACT. CONFIRMATION OF EXISTENCE AND EXACT LOCATION OF ALL SERVICES MUST BE OBTAINED FROM THE INDIVIDUAL UTILITIES BEFORE PROCEEDING WITH CONSTRUCTION.

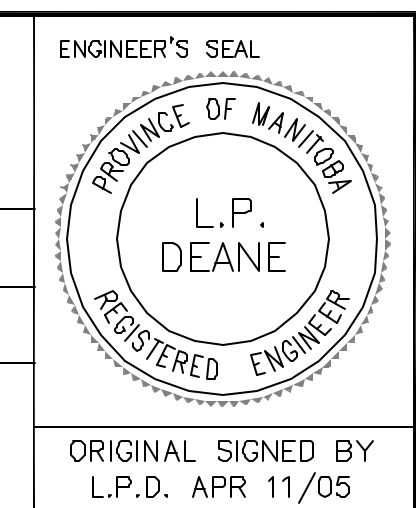
B.M. ELEV.	GBM 16-003
	235.794m
NO.	REVISIONS
	DATE BY

ENGINEERING DIVISION
TECHNOLOGY SERVICES BRANCH
106 - 1155 PACIFIC AVE

DESIGNED BY B.K./G.C. CHECKED BY B.K./A.P.

DRAWN BY B.B./S.S./B.C. APPROVED BY L.P.D.

HR. SCALE: 1 : 250
VERTICAL: 1 : 20
DATE 14/03/05



THE CITY OF WINNIPEG
PUBLIC WORKS DEPARTMENT

BROOKSIDE BOULEVARD / OAK POINT HIGHWAY (SOUTHBOUND)

FROM INKSTER BOULEVARD TO APPROXIMATELY 400 METRES SOUTH OF EAGLE DRIVE

ASPHALT OVERLAY AND ASSOCIATED WORKS

FROM STA: 13+00 TO STA: 14+50

CITY DRAWING NUMBER SE-05-29
SHEET 9 OF 11

9