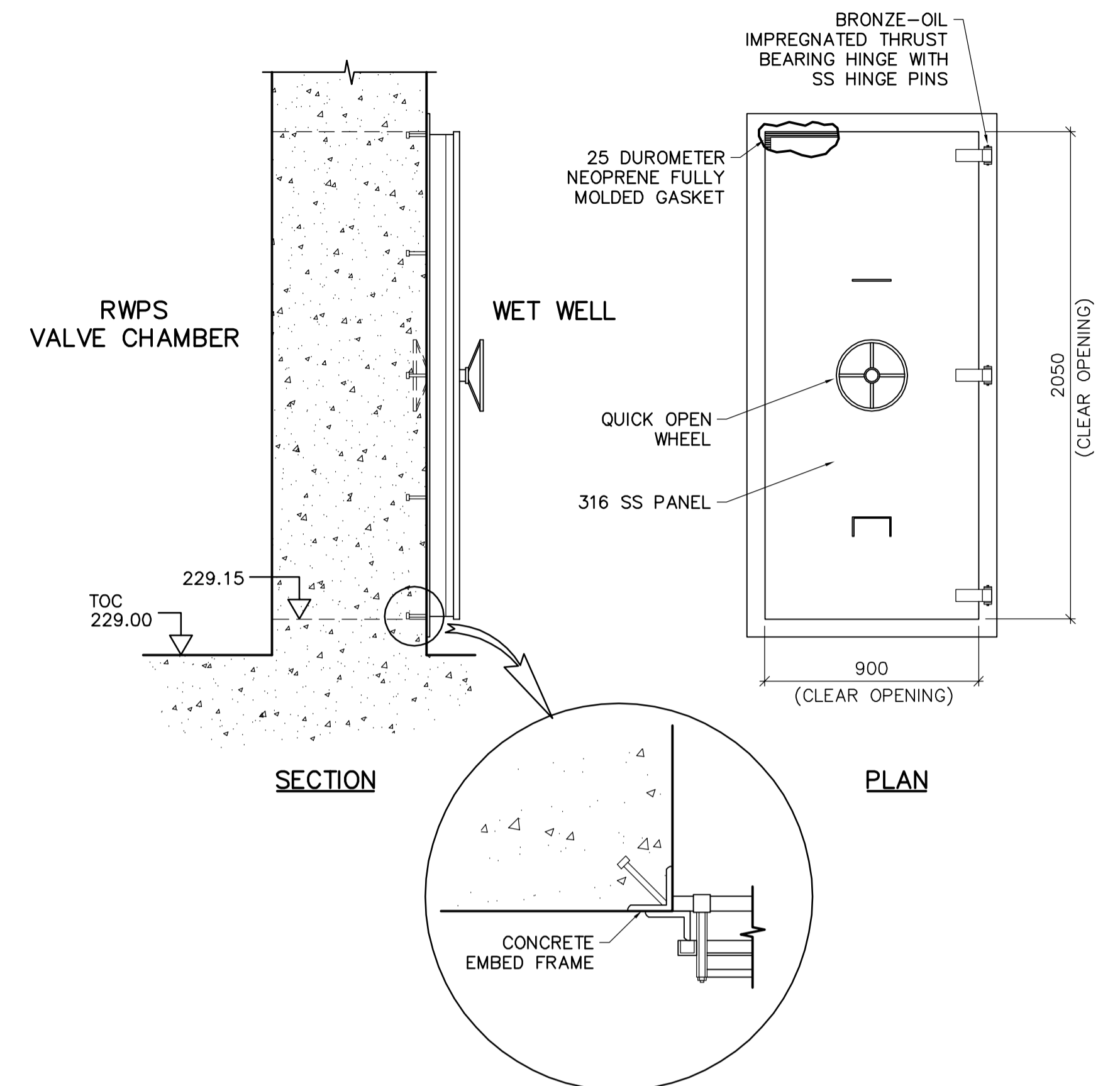
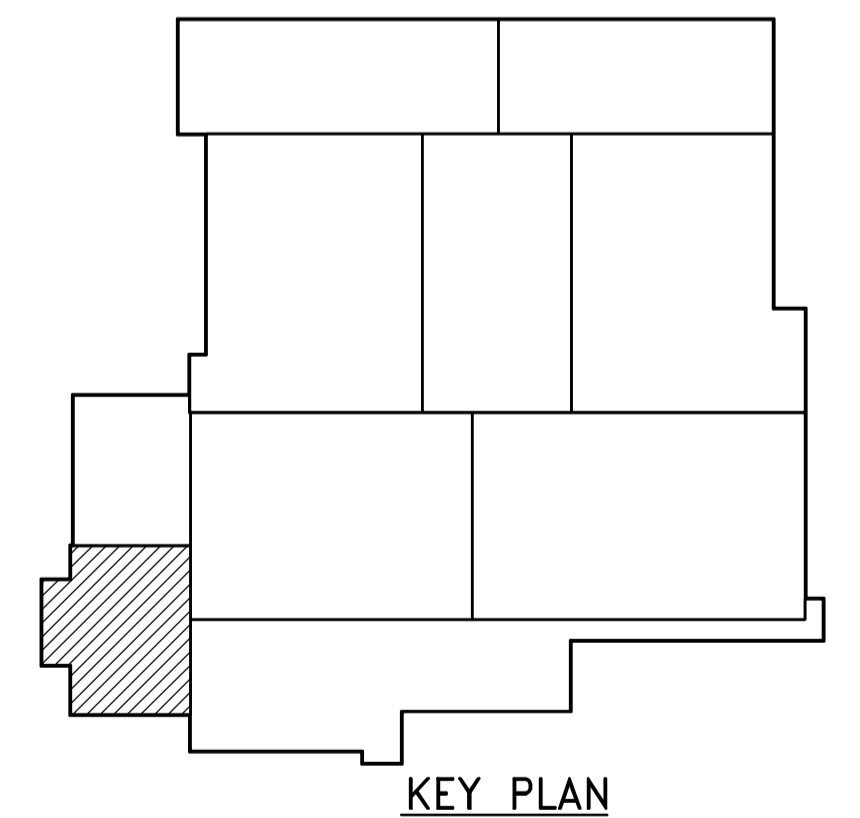


LOWER LEVEL PLAN  
1:100

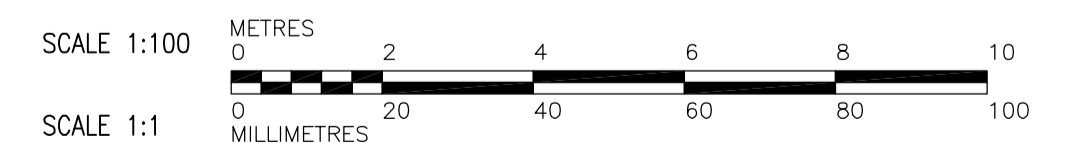


- NOTES:
1. INSTALLATION OF THE WATERTIGHT DOOR FRAMES TO BE PART OF THIS CONTRACT (BID OPP. 650-2005). DOORS AND FRAMES TO BE SUPPLIED BY OTHERS.
  2. DESIGN WATERTIGHT DOOR TO WITHSTAND A SEATING HEAD OF 12m OF WATER.
  3. ALL STEEL PARTS SHALL BE CONTINUOUSLY WELDED TOGETHER AND ALL WELDS TO BE GROUND SMOOTH.
  4. STRUCTURAL STEEL PLATES SHALL BE 316 S.S.
  5. FRAME SHALL INCLUDE SUITABLE ANCHORS FOR EMBEDMENT IN CONCRETE.

1 WATERTIGHT DOOR DETAIL  
1:20



LEGEND



<p>Certificate of Authorization Earth Tech Canada Inc. No. 730 Expiry: April 30, 2006</p>	B.M. ELEV.	<p>Frederickson Cooper ARCHITECTS</p>	<p>A Tech International Ltd. Company</p>	ENGINEER'S SEAL	<p>THE CITY OF WINNIPEG WATER AND WASTE DEPARTMENT ENGINEERING DIVISION</p>	<p>WATER TREATMENT PLANT INLET WORKS AND RAW WATER PUMPING FOUNDATIONS AND CONCRETE STRUCTURES 1</p>	CITY FILE NUMBER
				DESIGNED BY SBW			CHECKED BY SRB
		DRAWN BY JBC	APPROVED BY DJT	2005/10/28			CITY DRAWING NUMBER
	0 ISSUED FOR TENDER 05/10/28 JBC	SCALE: AS NOTED	RELEASED FOR CONSTRUCTION BY: R. SOROKOWSKI	CONSULTANT DRAWING NO. WI-M9101			1-0601-A-M9101-001-00D
	NO. REVISIONS	DATE	DATE	DATE			