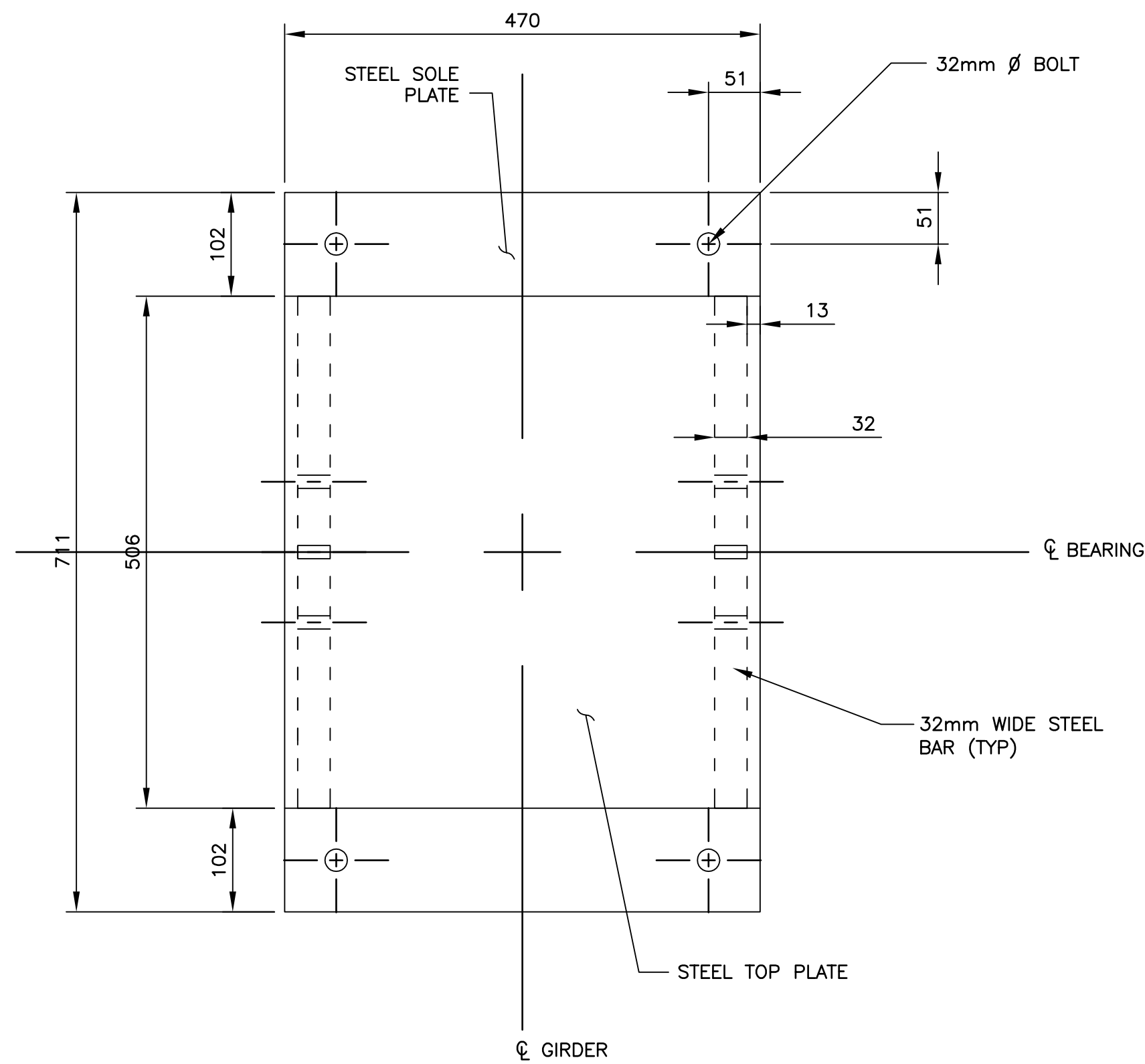
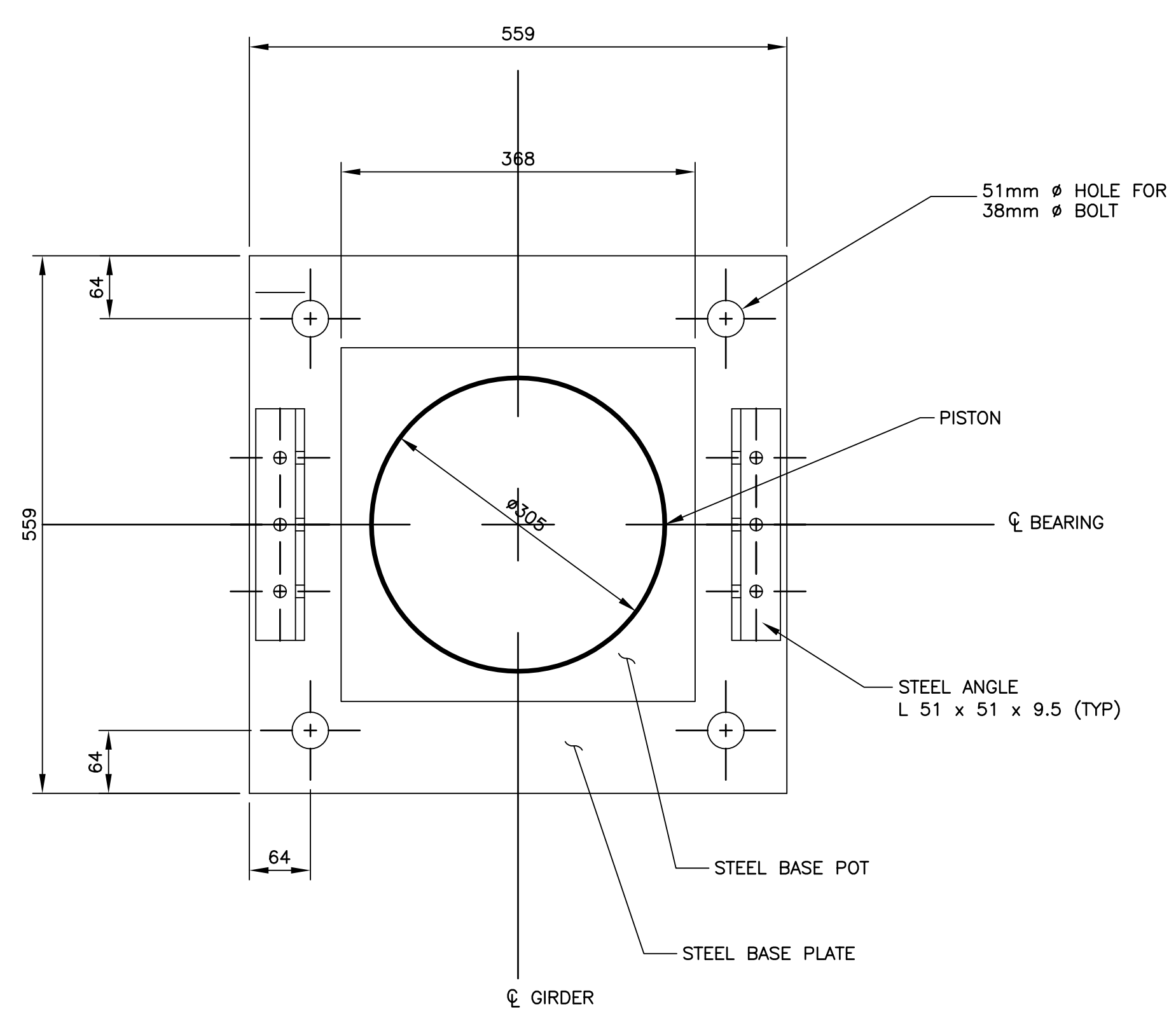


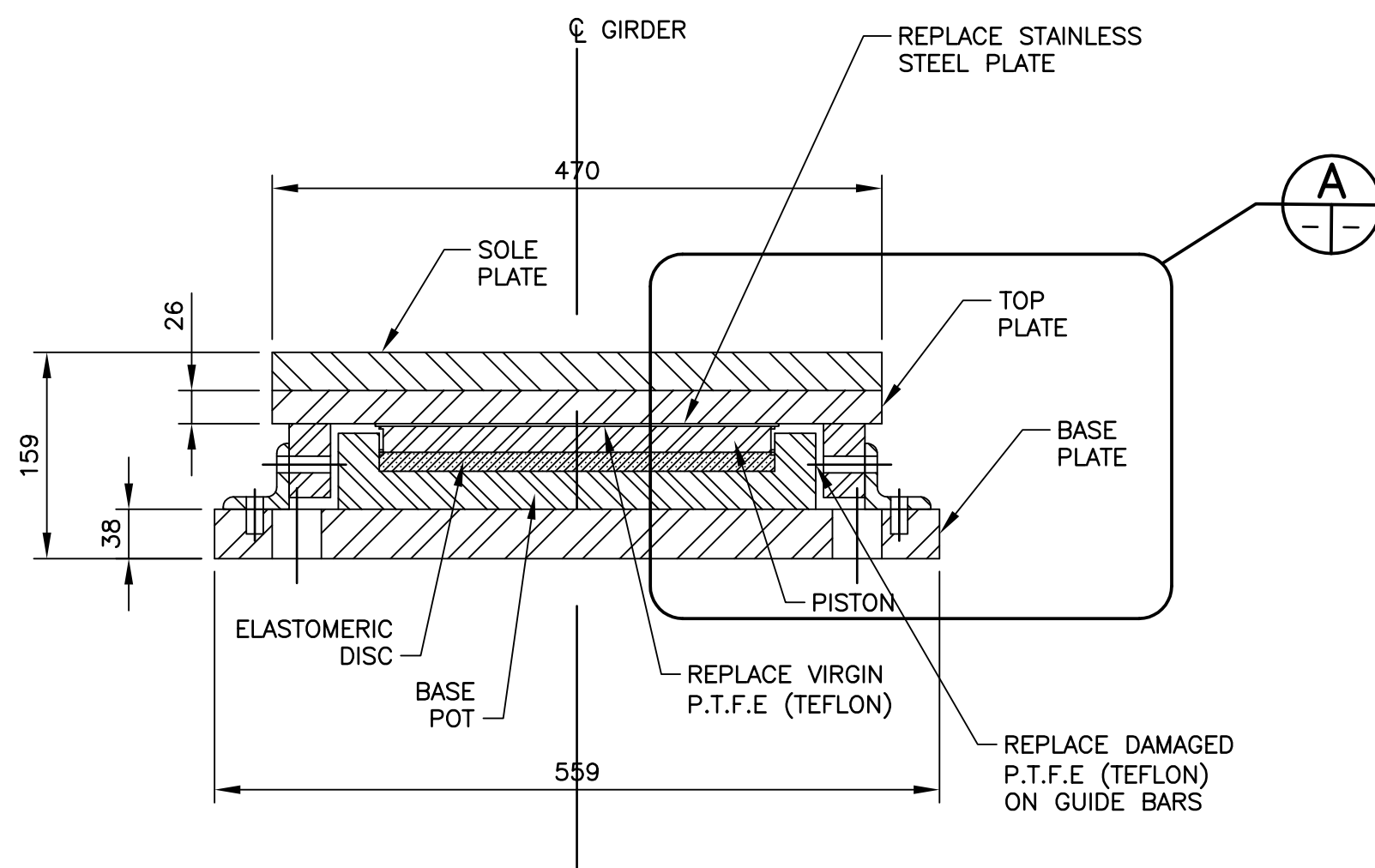
PLAN
1:5



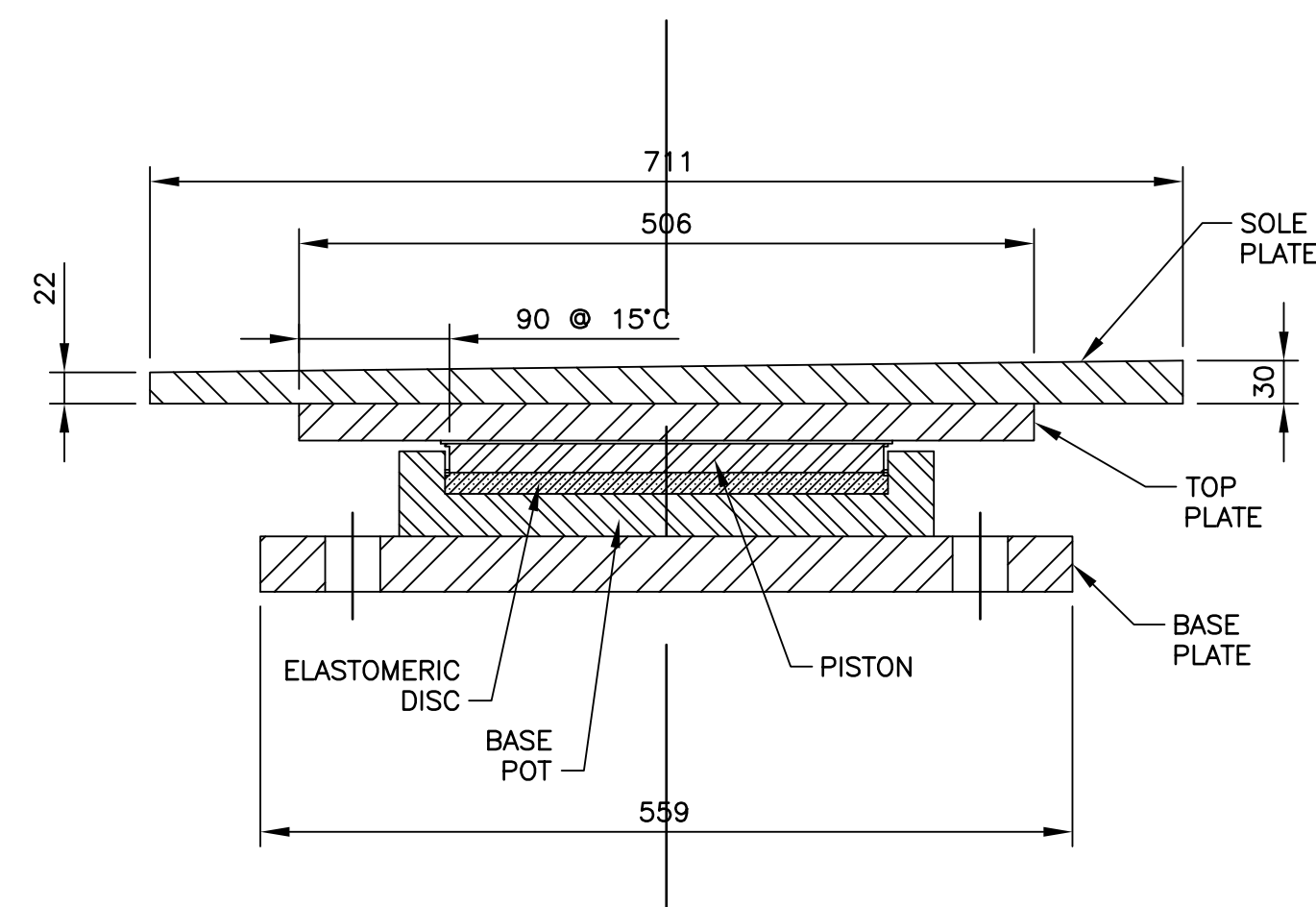
PLAN - TOP PLATE ASSEMBLY
1:5



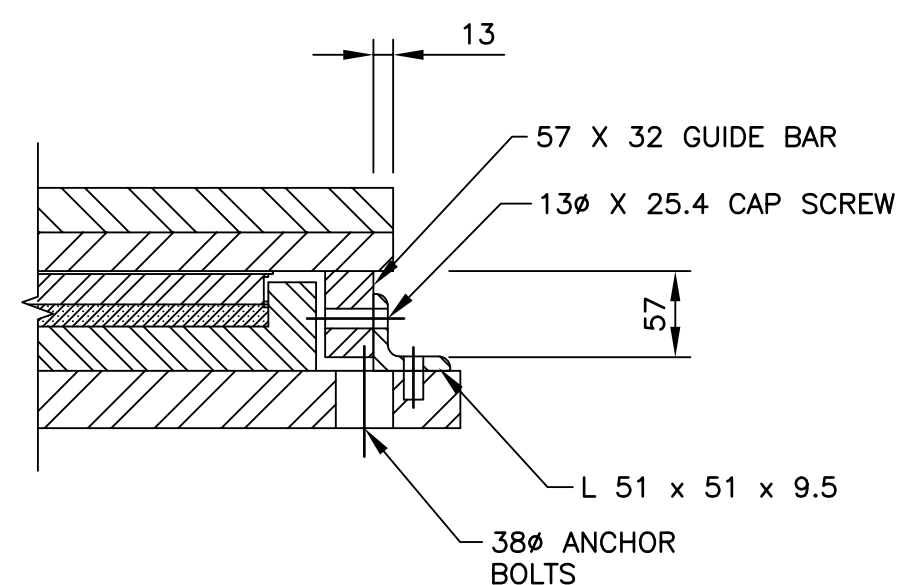
PLAN - BOTTOM PLATE ASSEMBLY
1:5



SECTION 1
1:5



SECTION 2
1:5



DETAIL A
1:5

NOTES:

1. TYPICAL BEARING REFURBISHMENT - 3 REQUIRED:
 - i) REMOVE ALL RUST AND LOOSE GALVANIZING BY GRIT BLASTING.
 - ii) REPLACE P.T.F.E SHEET ON PISTON AND GUIDE BARS.
 - iii) REPLACE STAINLESS STEEL PLATE C/W TIG WELD ALL AROUND.
 - iv) REFINISH ALL NON STAINLESS STEEL METAL PARTS BY METALLIZING.
2. BEARING LOAD CAPACITY = 1780 kN (400 KIPS)
2. AS AN ALTERNATIVE TO REFURBISHMENT, THE CONTRACTOR MAY SUPPLY AND INSTALL A NEW BEARING. ADDITIONAL BEARING DESIGN INFORMATION WILL BE SUPPLIED TO THE CONTRACTOR IF A NEW BEARING SUPPLY OPTION IS CHOSEN.



B.M. ELEV.		DESIGNED BY: R.A.W.		ENGINEER'S SEAL		CITY DRAWING NUMBER B173-05-02 SHEET 2 OF 2		
		DRAWN BY: M.R.D.					2005 BRIDGE MAINTENANCE FORT GARRY BRIDGE	
		CHECKED BY: R.A.W.						BEARING REFURBISHMENT AND DRAINAGE TRENCH WORKS
		REVIEWED BY: S.S.R.						
		SCALE: HORZ. AS SHOWN VERT.	DATE: OCT 2005	CONSULTANT PROJECT NO. 05-4421-1000				
2	ISSUED FOR BIDDING	10/31/05	M.R.D.	AUTHORIZED BY:				
1	ISSUED FOR CITY REVIEW	10/27/05	M.R.D.	CITY BRIDGE ENGINEER				
NO.	REVISIONS	DATE	BY					