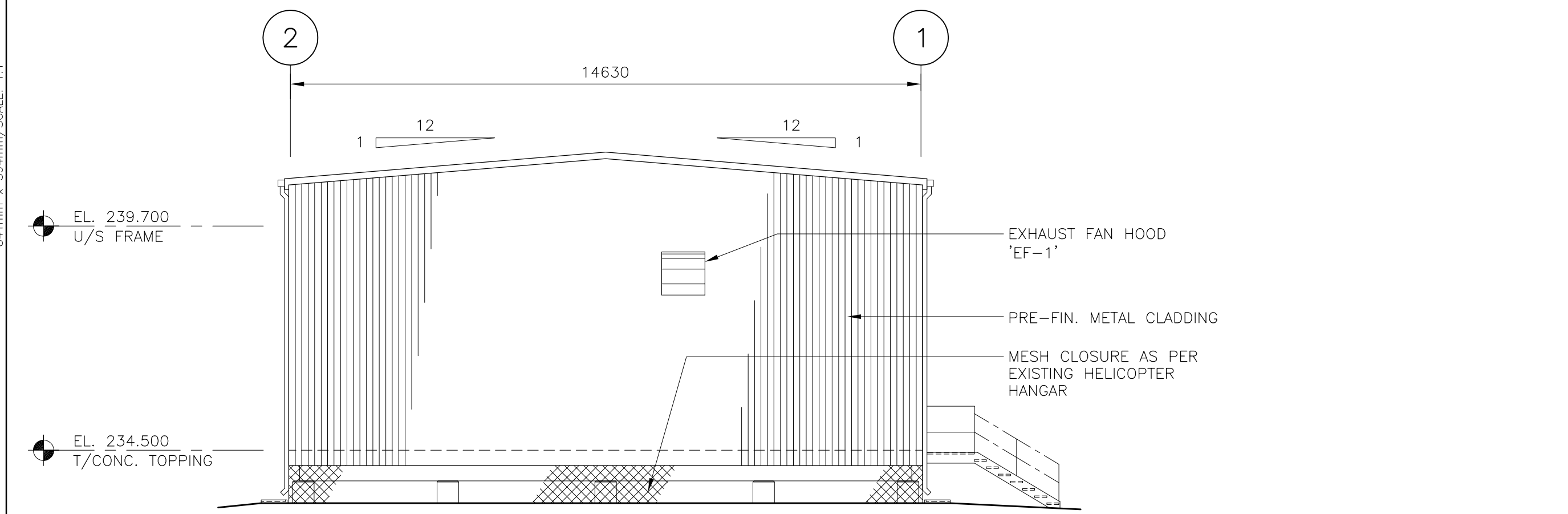
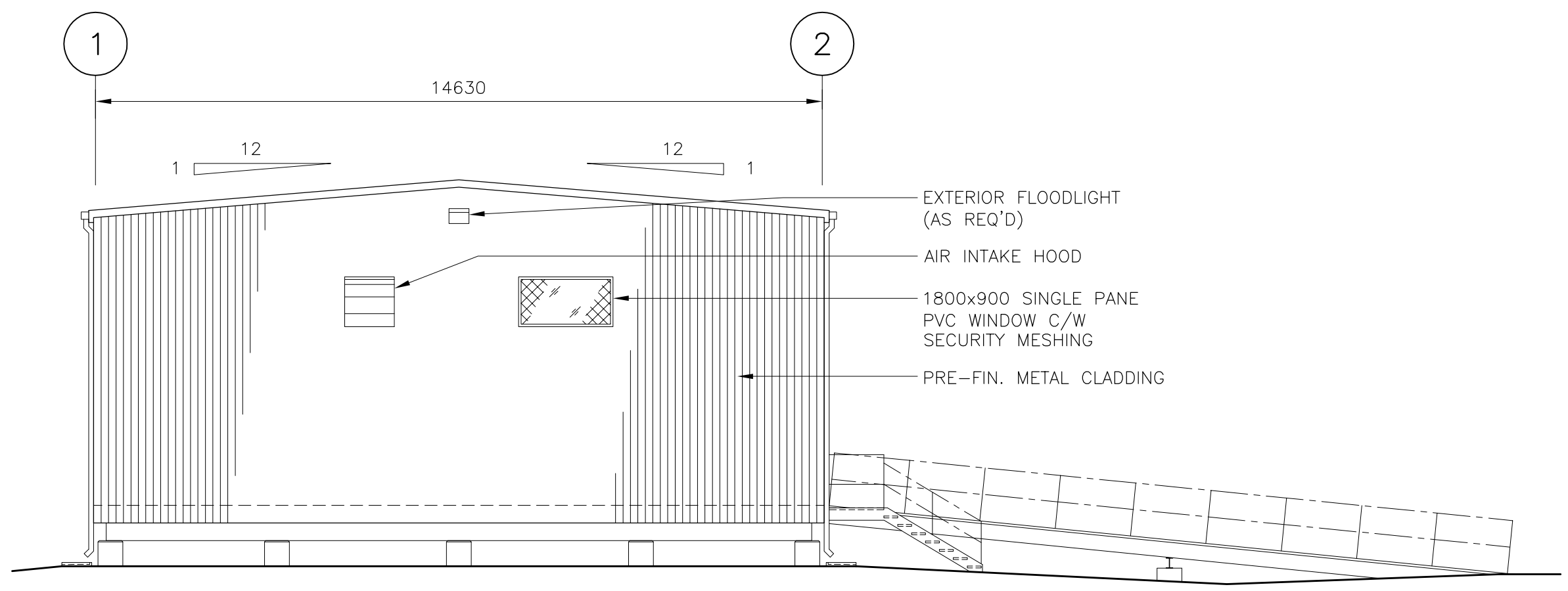


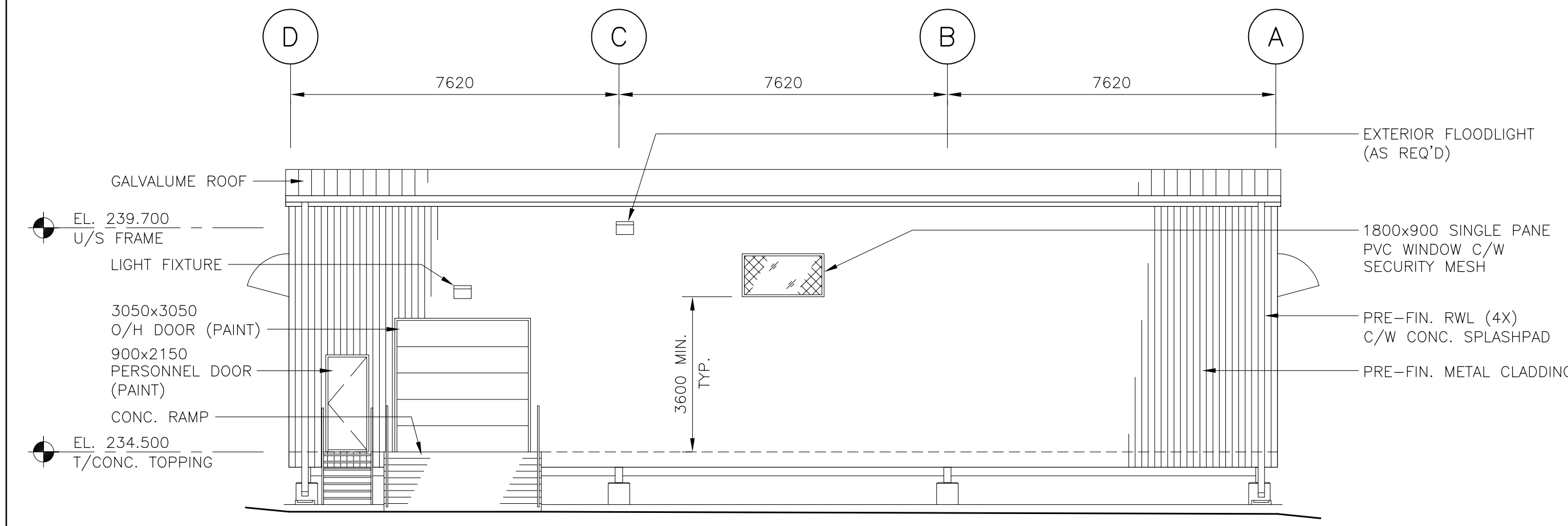
841mm x 594mm / SCALE: 1:1



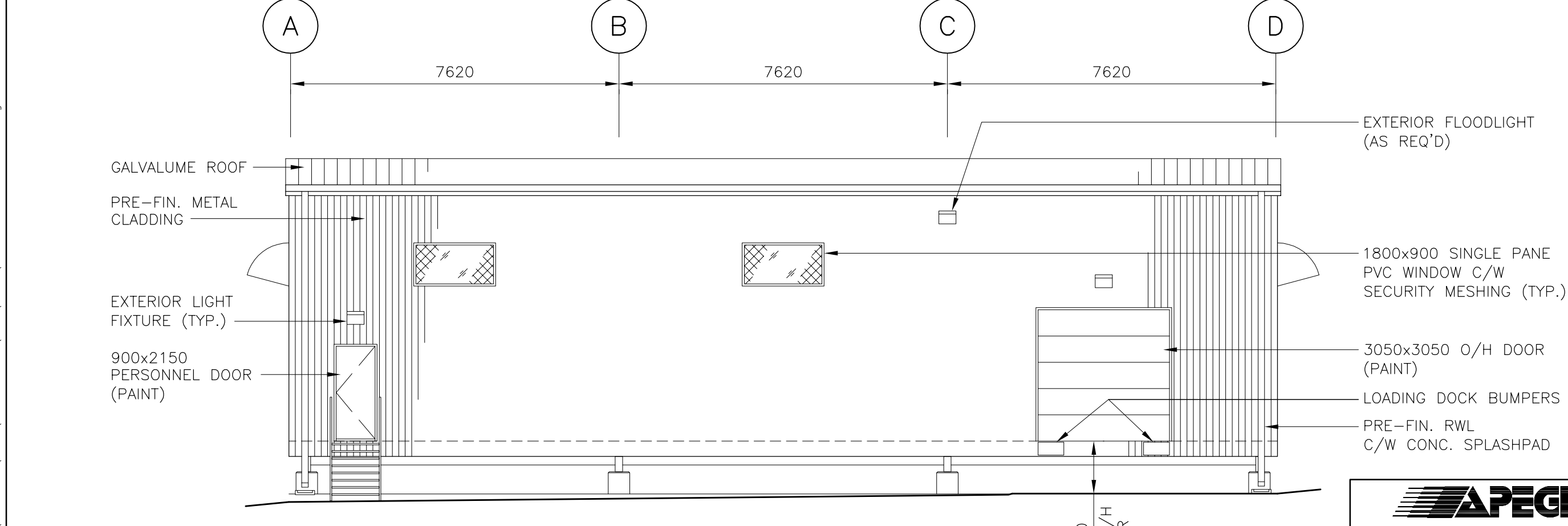
**NORTH ELEVATION**  
SCALE: 1:100



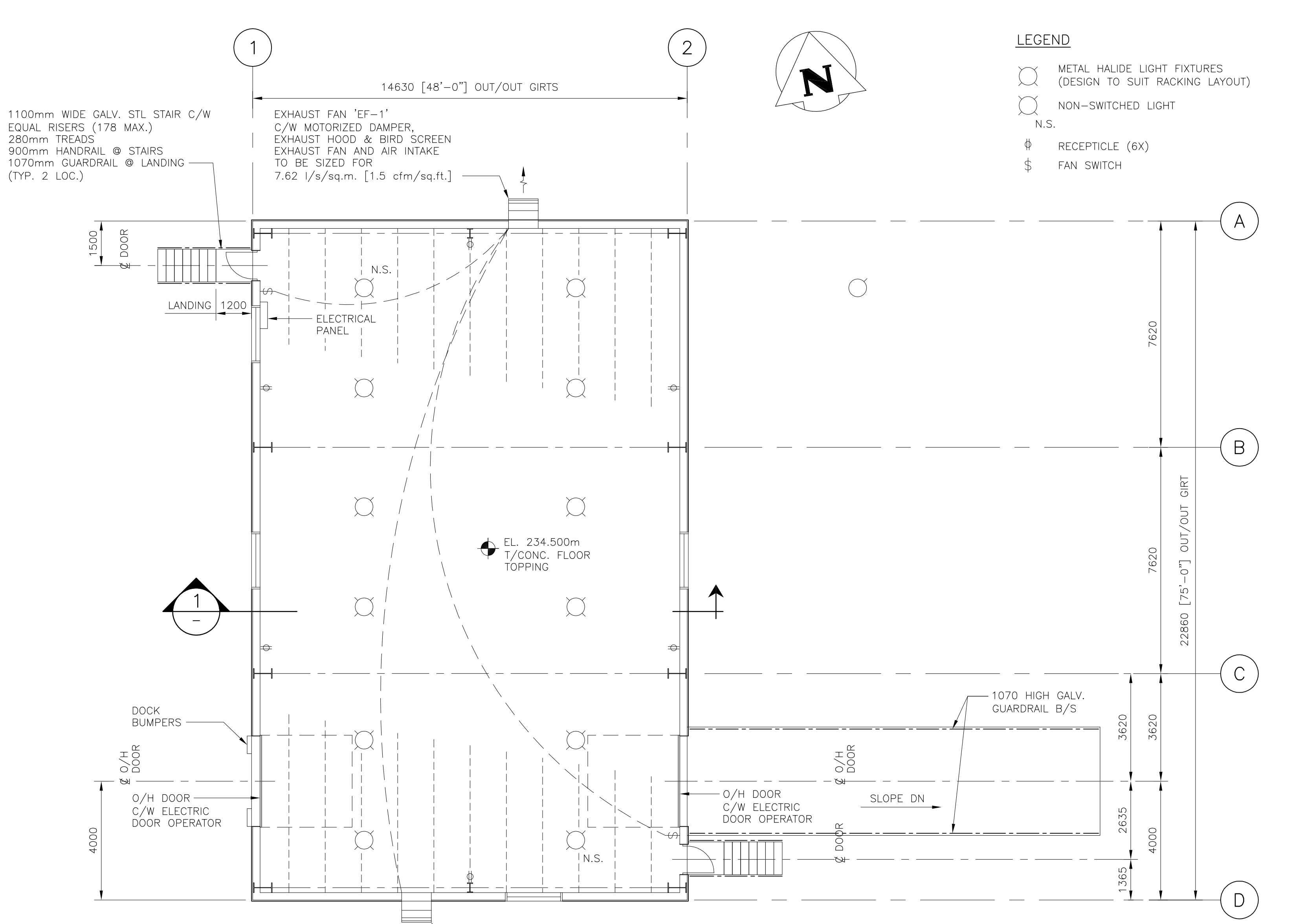
**SOUTH ELEVATION**  
SCALE: 1:100



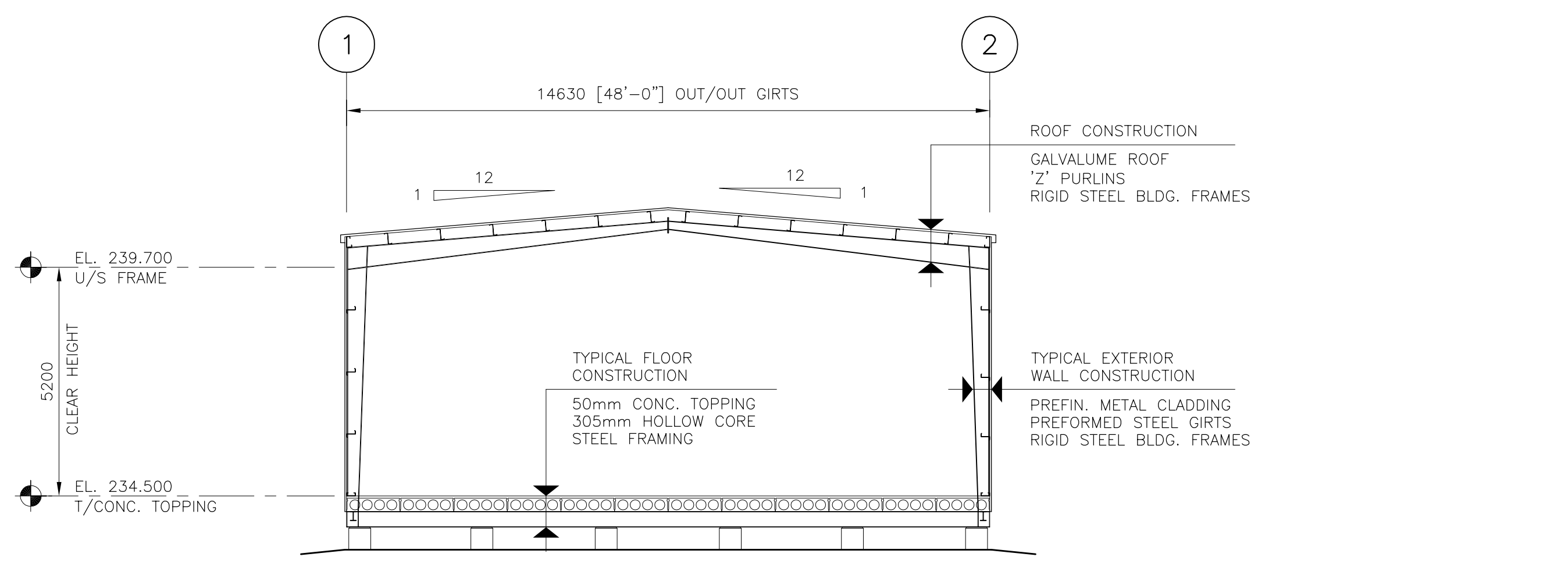
**EAST ELEVATION**  
SCALE: 1:100



**WEST ELEVATION**  
SCALE: 1:100



**FLOOR PLAN**  
SCALE: 1:100



**BUILDING SECTION**  
SCALE: 1:100

- LEGEND**
- ⊙ METAL HALIDE LIGHT FIXTURES (DESIGN TO SUIT RACKING LAYOUT)
  - NON-SWITCHED LIGHT
  - N.S.
  - ⊕ RECEPTACLE (6X)
  - ⊞ FAN SWITCH

**APEGM**  
Certificate of Authorization  
KGS Group  
No. 245 Expiry: April 30, 2004

<p><b>KGS CONSULTING ENGINEERS &amp; PROJECT MANAGERS</b> WINNIPEG THUNDER BAY</p>			
DESIGNED BY	RJL	CHECKED BY	
DRAWN BY	SNH	APPROVED BY	
HOR. SCALE	VERTICAL	RELEASED FOR CONSTRUCTION	
0	ISSUED FOR TENDER	OCT. 14/05	RJL
NO.	REVISIONS	DATE	BY
0			
		CONSULTANT DRAWING NO. 05-0107-12-A1	

**THE CITY OF WINNIPEG**  
PLANNING PROPERTY AND DEVELOPMENT  
SERVICES DEPARTMENT

**Winnipeg**

**CHEMICAL STORAGE WAREHOUSE**  
FLOOR PLAN, ELEVATIONS AND BUILDING SECTION

SHEET 3 OF 5  
CAD FILE DRAWING NUMBER 05-107-12-A-01-r0.dwg  
PROJECT NUMBER 2005-056

KGS No. P:\PROJECTS\2005\05-0107-12\DWG\DWG\05-0107-12-A-01-r0.dwg